

Received October 27, 2021, accepted November 11, 2021, date of publication December 3, 2021, date of current version December 22, 2021.

Digital Object Identifier 10.1109/ACCESS.2021.3132785

# Robot-Based Intervention for Children With Autism Spectrum Disorder: A Systematic Literature Review

KATRIN D. BARTL-POKORNY<sup>1,2,3</sup>, MAŁGORZATA PYKAŁA<sup>4</sup>, PINAR ULUER<sup>5,6</sup>, DUYGUN EROL BARKANA<sup>7</sup>, ALICE BAIRD<sup>1</sup>, HATICE KOSE<sup>6,8</sup>, (Senior Member, IEEE), TATJANA ZORCEC<sup>9</sup>, BEN ROBINS<sup>10</sup>, BJÖRN W. SCHULLER<sup>1,11</sup>, (Fellow, IEEE), AND AGNIESZKA LANDOWSKA<sup>4</sup>

<sup>1</sup>EIHW–Chair of Embedded Intelligence for Health Care and Wellbeing, University of Augsburg, 86159 Augsburg, Germany

<sup>2</sup>Research Unit iDN - interdisciplinary Developmental Neuroscience, Division of Phoniatrics, Medical University of Graz, 8036 Graz, Austria

<sup>3</sup>Division of Physiology, Otto Loewi Research Center, Medical University of Graz, 8036 Graz, Austria

<sup>4</sup>Department of Software Engineering, Faculty of Electronics, Telecommunications and Informatics, Gdansk University of Technology, 80-233 Gdansk, Poland

<sup>5</sup>Faculty of Engineering and Technology, Galatasaray University, 34349 Istanbul, Turkey

<sup>6</sup>Faculty of Computer and Informatics, Istanbul Technical University, 34467 Istanbul, Turkey

<sup>7</sup>Department of Electrical and Electronics Engineering, Faculty of Engineering, Yeditepe University, 34755 Istanbul, Turkey

<sup>8</sup>Department of AI and Data Engineering, Istanbul Technical University, 34467 Istanbul, Turkey

<sup>9</sup>University Children's Hospital, 1000 Skopje, North Macedonia

<sup>10</sup>School of Computer Science, University of Hertfordshire, Hatfield AL10 9EU, U.K.

<sup>11</sup>Group on Language, Audio, and Music (GLAM), Imperial College London, London SW7 2BX, U.K.

Corresponding author: Agnieszka Landowska (nailie@eti.pg.edu.pl)

This work was supported by the European Commission's Erasmus+ Project (EMBOA, Affective loop in socially assistive robotics as an intervention tool for children with autism) under Contract 2019-1-PL01-KA203-065096.

**ABSTRACT** Children with autism spectrum disorder (ASD) have deficits in the socio-communicative domain and frequently face severe difficulties in the recognition and expression of emotions. Existing literature suggested that children with ASD benefit from robot-based interventions. However, studies varied considerably in participant characteristics, applied robots, and trained skills. Here, we reviewed robot-based interventions targeting emotion-related skills for children with ASD following the guidelines of the Preferred Reporting Items for Systematic Reviews and Meta-Analyses (PRISMA) statement. We systematically searched for all relevant articles published in English language until May 2021, using the databases Scopus, Web of Science, and PubMed. From a total of 609 identified papers, 60 publications including 50 original articles and 10 non-empirical articles including review articles and theoretical articles were eligible for the synthesis. A total of 892 participants were included in the robot-based intervention studies; 570 of them were children with ASD. Nao and ZECA were the most frequently used robots; recognition of basic emotions and getting into interaction were the most frequently trained skills, while happiness, sadness, fear, and anger were the most frequently trained emotions. The studies reported a wide range of challenges with respect to robot-based intervention, ranging from limitations for certain ASD subgroups and security aspects of the robots to efforts regarding the automatic recognition of the children's emotional state by the robotic systems. Finally, we summarised and discussed recommendations regarding the application of robot-based interventions for children with ASD.

**INDEX TERMS** Autism spectrum disorder, child-robot interaction, emotion expression, emotion recognition, intervention, socio-communicative abilities.

## I. INTRODUCTION

Autism Spectrum Disorder (ASD; OMIM 209850) is a neurodevelopmental disorder that is associated with persistent deficits in the socio-communicative domain. The mean age

The associate editor coordinating the review of this manuscript and approving it for publication was Gustavo Olague.

of diagnosis of ASD is around 4 to 5 years of age [1]. Baio and colleagues [2] reported an average prevalence of 16.8 per 1,000 children aged 8 years in the USA. The authors found that ASD was more common in boys (26.6 per 1,000) than in girls (6.6 per 1,000). The clinical picture of ASD is heterogeneous, including diverse symptom severity and potential comorbidities such as anxiety disorder

or attention-deficit hyperactivity disorder [3]. Limited socio-communicative skills and deficits in the recognition and expression of emotions influence the ability of children with ASD to interact and communicate with others, affecting their relationships with family members, peers, and therapists.

There are promising results in the use of robots in supporting the social and emotional development of children with ASD. Using robots as social mediators to engage children in tasks, allows for predictable and reliable environment; e.g., having predictable rules is an important prerequisite in promoting prosocial behaviors. We do not know exactly why children with ASD are eager to interact with human-like looking robots and not with humans. Regardless of the reason, social robots proved to be a way to get through the social obstacles of a child and make him/her involved in the interaction. Once the interaction happens, we have a unique opportunity to engage a child in gradually building and practicing social and emotional skills.

This paper is part of the work of the Erasmus+ project “EMBOA- Affective loop in Socially Assistive Robotics as an intervention for Children with Autism”.<sup>1</sup> The project aims to implement, evaluate and develop guidelines in the feasibility of applying emotion recognition technologies in robot-supported intervention for children with ASD. The project combines three domains: intervention for children with ASD, social robots, and automatic emotion recognition. This paper presents one of the results of the project - a systematic literature review (SLR) according to the procedure proposed by Ba and Charters [4] and Turner *et al.* [5] and meta-analysis of robot-based intervention for children with ASD.

The purpose of this paper is to report a study, based on systematic literature review, what aimed at exploration of the state-of-the-art in the use of social robots in intervention for children with ASD. The paper uses PRISMA (Preferred Reporting Items for Systematic Reviews and Meta-Analysis) standard for reporting the study and is organized as follows. Section II describes the research methods used and the procedures of the systematic literature review. Section III reports quantitative and qualitative results respectively. The results are followed by a discussion of research validity and outline of challenges that might be addressed by future works.

## II. RESEARCH METHOD

Systematic literature review was used in the study as a methodological approach for capturing state-of-the-art in the domain of interest. The systematic method was chosen as the study aimed at finding key studies and performing the review with a transparency and rigour that would allow to replicate the study [4], [5]. According to the approach, the following steps were performed: (1) setting up research questions, (2) defining keywords and search string, (3) inclusion and exclusion criteria, (4) decision on search engines, (5) data extraction, (6) multiple-phase selection based on quality criteria and research questions, (6) final selection of papers

and snowballing technique, (7) extraction of the key findings. The study is reported using framework PRISMA (Preferred Reporting Items for Systematic Reviews and Meta-Analysis) [6].

### A. RESEARCH QUESTIONS

In the study we aimed at identification of the key previous studies, covering all aspects, technical as well as psychological, related to robot-based intervention in children with ASD. We finished up with five research questions:

- [RQ1] Which robots are used in interventions for children with ASD?
- [RQ2] Which emotions are of interest in children with ASD?
- [RQ3] Which skills are addressed in interventions using robots?
- [RQ4] What are challenges in the interaction of robots with children with ASD?
- [RQ5] Are there any recommendations/lessons learned regarding the use of robots in interventions for children with ASD?

Regarding the first research question we aimed at identifying types of robots used as well as the frequency of use of the robots in intervention for children with ASD. The second and third questions refer to intervention purposes for children with ASD: The focus of our study is to identify the skills trained with robot-based therapeutic approaches and the emotions tracked in order to support the therapy process. The fourth and fifth research questions also refer to therapy focused on emotional skills and enhanced with robots and they are of qualitative nature: We want to identify core challenges, recommendations, and lessons learned from previous studies.

### B. SEARCH ENGINES AND INCLUSION CRITERIA

In the study we decided to use three literature search engines, according to the triangulation rule. In order to cover both articles from the technical and articles from the medical community, we chose the search engines Scopus, Web of Science, and PubMed. All three databases provide search by both title and topic. The inclusion criteria were defined as follows. We settled on including in the SLR the papers written in English and published in journals or conference proceedings, regardless of date. We agreed to exclude papers written in other languages from the further phase of SLR. For further stages of paper selection we were scanning for papers that focus on using robots in intervention for children with ASD, papers that contain validation with at least 1 child. At analysis stage we have decided to include some papers without participants as well, if they reported interesting recommendations or challenges. Moreover, we wanted to focus on papers that referred to emotion-related interventions.

### C. KEYWORDS

The keywords defined were grouped into the clusters:

- 1) related to emotions (emotion, affective, emotional, affect),

<sup>1</sup><https://emboa.eu/>

**TABLE 1.** Number of obtained results for the specified query.

#		Search field		
		Title	Topic(1st)	Topic(2nd)
Database	Scopus	13	183	265
	Web of Science	11	176	231
	PubMed	1	81*	113*

\* The numbers represent the search results in all fields.

- 2) related to children (children, child, young),
- 3) related to autism (autism, ASD, ASC, autistic, pervasive developmental disorder),
- 4) related to robots (robot, SAR, RAT, robotic, humanoid),
- 5) related to therapy (intervention, learn, learning, teach, teaching, tutoring, therapy, coaching).

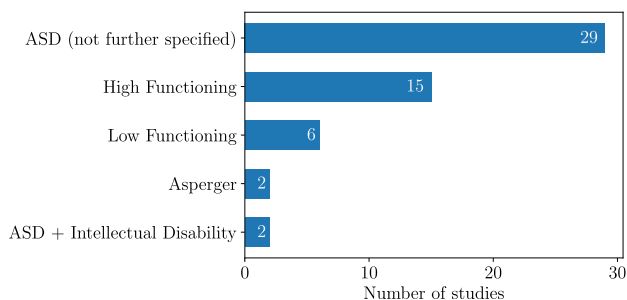
The phrases were searched in title and topic fields available in all three search engines. Each scientific database has its own search engine resulting in a different query format. Thus, we had to slightly modify our search query to fit these requirements.

#### D. PAPERS EXTRACTION AND SELECTION

There were two rounds of paper extraction and selection. The first round was performed in January 2020 and the second one in May 2021 to reveal the most current studies. Papers extraction by topic resulted in 231 records from Web of Science, 265 records from Scopus and 113 records from PubMed, which gave 609 papers in total (428 after duplicates removal). The detailed numbers are provided in Table 1.

The paper selection process in each round was manual and consisted of two phases: selection by title and selection by abstract. Each paper was evaluated for its relevance to the eligibility criteria. The papers were evaluated on the three-points scale: 0 – irrelevant, 1 – somehow relevant or unsure, 2 – surely/strongly relevant. The tagging was performed by four independent raters among authors of this paper. Further decisions were made based on the sum of scores. Papers scored 8, i.e. each rater scored 2, were taken to the next stage automatically. Papers scored less than 4 were excluded automatically. Papers with scores 4-7 went under screening to the next phase. The two rounds were reported in detail separately. This is due to the fact that not all raters participated in both rounds and we found it invalid to simply sum up the totals. The first and the second rounds are depicted with PRISMA diagrams in Fig 2 and 3, respectively.

The Fleiss' kappa coefficient was used to determine inter-rater consistency of tagging. The coefficient was 0.64 for title tagging and 0.53 for abstract tagging in the first round. In the second round, the inter-rater consistency was 0.59 both for tagging by title and by abstract. Papers that passed the screening (tagging) phase, were analysed in detail. We decided to add additional papers while at analysis stage, if relevant papers in literature would be found by citation scanning (snowballing technique) or from other sources. Sixteen papers were additionally included in total (15 in the first round and 1 in the second round).

**FIGURE 1.** Number of articles including participants of ASD subgroups and participants with ASD without assignment to subgroups.

#### E. KEY FINDINGS ANALYSIS

All papers included in the quantitative study were checked against a number of issues including:

- A) information about study participants including wording for individuals with ASD,
- B) robot(s) used in intervention,
- C) skills addressed in intervention,
- D) challenges identified by the included articles,
- E) recommendations given by the included articles for future studies

Both papers qualified to quantitative and qualitative study were also screened for challenges and/or recommendations for future studies.

#### III. SLR QUANTITATIVE AND QUALITATIVE RESULTS

Quantitative analysis included 50 papers that had at least one participant. In qualitative analysis we have added more papers that did not report any studies with children but had interesting recommendations for child-robot interaction.

##### A. STUDY PARTICIPANTS

Fifty of 60 articles included participants. One study included adults only [7]. The other 49 studies investigated children. Forty-eight of these 49 studies included children with ASD; twelve of the 48 studies included typically developing (TD) controls. Miskam and colleagues [8] included one TD child, but no children with ASD. The total number of participants included by the 50 original articles is 892 (min: 1, max: 137, mean: 18, median: 10, standard deviation: 23; rounded to integers). Of these, 570 were children with ASD and 322 were TD participants (137 of these were adults [7]).

Twenty-nine studies included in this SLR investigated participants with ASD and did not specify in their articles whether these children belonged to certain subgroups of ASD. Some studies, however, described their participants by reporting them to belong to ASD subgroups (Fig. 1).

The most frequently included subgroup is the 'high functioning' subgroup, followed by the 'low functioning' subgroup. It remains open whether the subgroups 'Asperger' and 'high functioning' and the subgroups 'ASD + Intellectual Disability' and 'low functioning' have the same inclusion criteria respectively and could thus be grouped together.

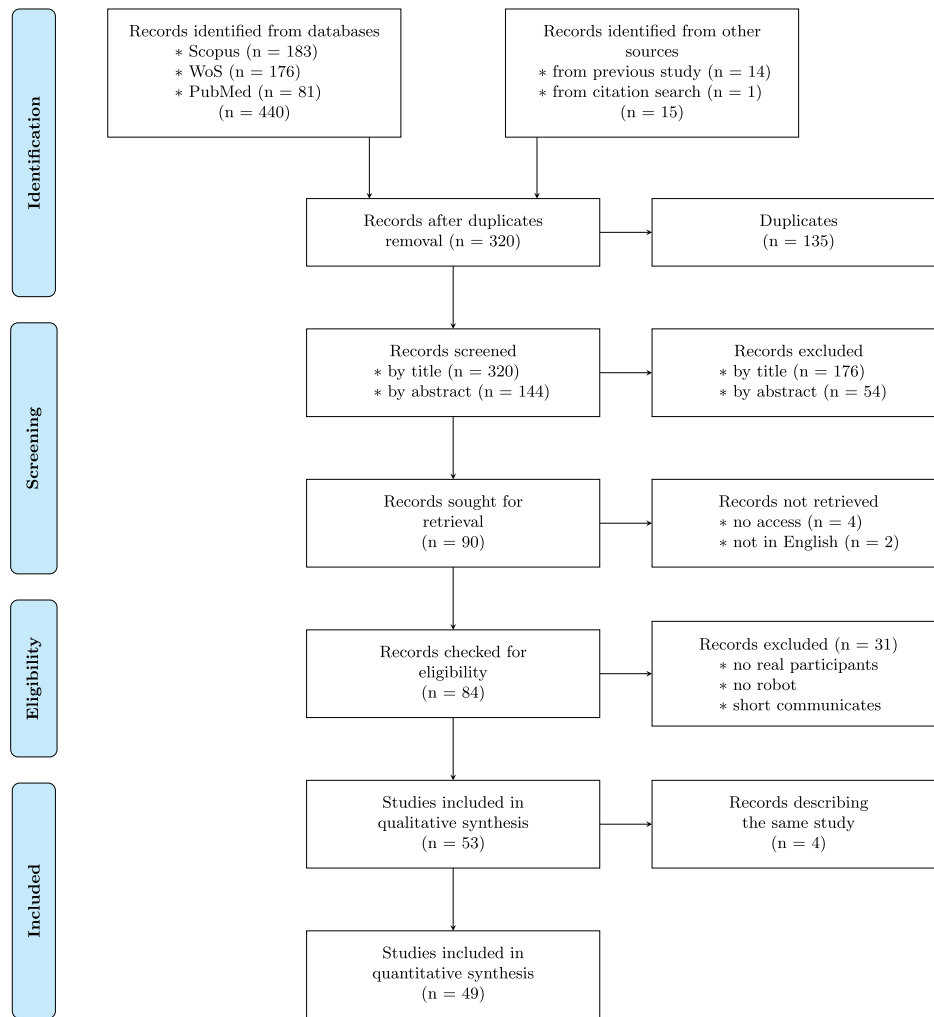


FIGURE 2. PRISMA flow diagram for the first stage of the SLR.

1) GENDER

Thirty-seven of the 48 studies including participants with ASD provided information about the gender of the participants with ASD: The gender of a total of 510 participants with ASD was reported. Of these, twelve studies included only male participants. From all studies together, 420 participants with ASD were reported to be males (min: 1, max: 52, mean: 11, median: 8, standard deviation: 11; rounded to integers) and 90 participants with ASD were reported to be females (min: 1, max: 9, mean: 4, median: 3, standard deviation: 2; numbers refer only to the 25 studies including female participants with ASD). Of the 25 studies including both male and female participants, two studies included an equal amount of female and male participants [9], [10], two studies included more females than males [11], [12], and the remaining 21 studies included more males than females.

2) AGE

The adult participants of [7] were between 21 and 63 years old (mean: 34.5, standard deviation: 9.6). Forty-four of the

49 studies including children provided information on the age of the participants. Of these, 38 studies provided the exact ages or the age ranges of the participants. The participants of these 38 studies were between 2 and 20 years old: The youngest participants of the studies were 2-14 years (rounded to full years) respectively (mean: 6, median: 5, standard deviation: 3; rounded to integers); the oldest participants of the studies were 2-20 years (rounded to full years) respectively (mean: 10, median: 10, standard deviation: 4). Two of the 38 studies included only one participant [13], [14]; for the remaining 36 studies we calculated the number of years between the youngest and the oldest child: it was 0 to 13 years respectively (mean: 5, median: 5, standard deviation: 3; rounded to integers). The six studies providing information on the age of the participants – but neither the exact ages nor the age ranges – either provided the mean age of the participants (9.03 years [15], 10 years [16], 11.4 years [17], 2.5 years [18]), the mean age and the standard deviation (5.4±1.5 years [19]), or the inclusion criteria regarding age (6-9 years [20]).

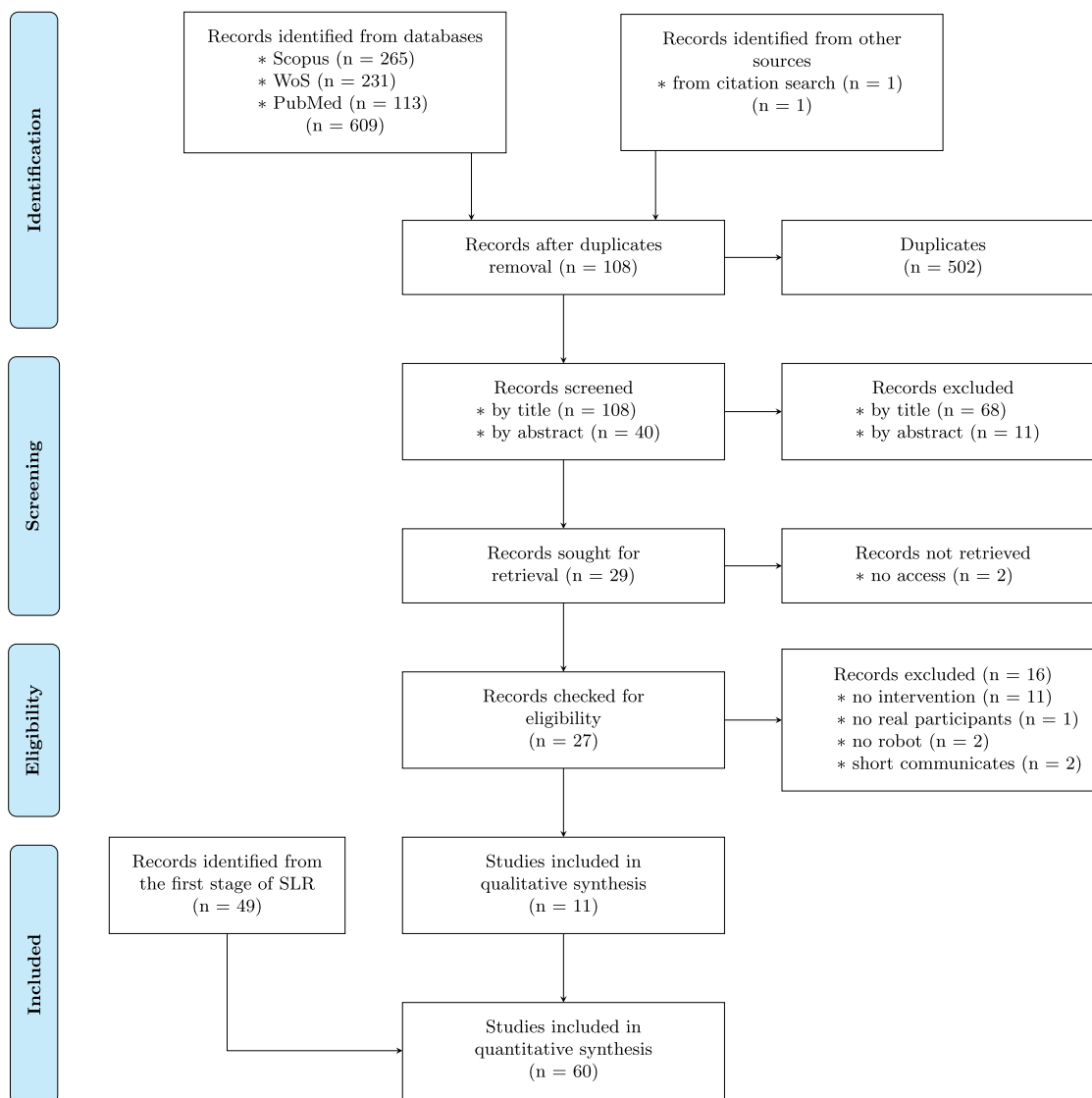


FIGURE 3. PRISMA flow diagram for the second stage of SLR.

### 3) WORDINGS FOR PARTICIPANTS

Articles used different wordings to refer to participants with ASD and TD participants (Table 2). The most often used wording for children with ASD was ‘children with ASD’ (30 studies) and the most often used wording for TD children was ‘TD children’ (nine studies).

The wording ‘children with ASD’ was used by articles published from the years 2008 to 2021 (median: 2018). The wording ‘children with autism’ was used by articles published between 2002 and 2020 (median: 2017). ‘Autistic children’ was used by articles published from the years 2002 to 2020 (median: 2015). ‘Children on/with autism spectrum’ was used in an article published in 2017 [53] and an article published in 2019 [22]. The wording ‘autism children’ was used by one article published in 2018; the wording ‘ASD children’ was used by one article published in 2016. The wording ‘TD children’ was used by articles published between 2014 and

2020 (median: 2018). ‘Normal children’ was used by articles published between the years 2012 and 2018 (median: 2014). ‘Neurotypical children’ was used by articles published between 2015 and 2019. The wording ‘typical individuals’ was used by one article published in 2008.

### B. ROBOTS

We examined which robots were used in interaction scenarios designed for robot-based intervention. We grouped these robots based on their morphological properties, analyzed their popularity and their presence in the CRI studies over the years, as well as the age intervals of children interacting with them.

#### 1) ROBOTS AND THEIR POPULARITY

The reviewed articles referred to 38 robots. We have divided them into five categories based on their morphological



**TABLE 2.** Articles using the given wordings to refer to the participants. Some articles are listed twice or more often because they used two or more wordings. Abbreviations: ASD = autism spectrum disorder; TD = typically developing.

Wording	Articles
Children with ASD	[10], [12], [13], [15]–[17], [19], [21]–[43]
Children with autism	[7]–[9], [12], [13], [19], [20], [34], [37], [41], [42], [44]–[47]
Autistic children	[8], [15], [19], [20], [36], [46], [48]–[52]
Children on/with autism spectrum	[22], [53]
ASD children	[54]
Autism children	[51]
TD children	[10], [12], [19], [21], [24], [26], [43], [47], [52]
Normal children	[8], [20], [36], [49], [51]
Neurotypical children	[13], [16], [23], [50]
Typical individuals	[34]

characteristics: humanoid, animal/creature, mobile robot, ball-shaped robot, and other. The morphological categories of the robots, their names and the corresponding studies are displayed in Table 3.

The first, and most popular, category is composed of 16 humanoid robots. The most popular robot in the category is Softbank’s Nao. Nao is followed by ZECA and Darwin-Mini. These robots were mentioned multiple times in different articles with slight changes in their model or version. The Darwin-Mini robot from Robotics was mentioned as “Darwin-OP” [58], “Darwin OP-2” [16] (its updated version) or “Mini Darwin” [7]. We grouped all the corresponding studies under the name Darwin-Mini in the Table 3. The other humanoid robot, appearing in articles with several names, is Hanson Robotics’ Zeno robot. It is listed as “Zeno R-50” [50], “Robokind R25 robot” [33] or “ZECA” [12], [57] as in “Zeno Engaging Children with Autism”. We decided to keep the name “ZECA” and listed all the referenced studies under this name. ZECA is followed by Kaspar, which is primarily designed as a social companion robot for children with autism (Fig 4).

The second category consists of 11 robots having animal or toy-like characteristics. The robots in this category physically resemble animals or toys designed to give the impression of a living being. Most of them take their inspiration from animals; the dinosaur robot Pleo [31], the parrot KiliRo [53], the monkey SAM [26], the bee-like Bee-bot [38], the penguin PABI [63], and the dogs Zoomer [21] and AIBO [59]. The other robots assigned to this category are the robots having toy-like or cartoon-like characteristics: Keepon, a small yellow-colored snowman [27]; Muu, a creature resembling a droplet with a single eye [59]; and Probo, a child-sized plushie having the trunk of an elephant [61].

The next category comprises of 7 mobile robots. This category is composed of wheeled robotic platforms having the appearance of a toy-car. They are remotely controlled and used in order to attract the attention of children and maintain

**TABLE 3.** Robots used in studies for children with ASD.

Robot type	Robot	Articles
Humanoid	NAO	[7], [8], [13], [15], [17], [20], [22], [24], [25], [32], [36], [37], [39]–[42], [47]–[49], [51], [55], [56]
	ZECA	[12], [33], [50], [52], [54], [57]
	Darwin-Mini	[7], [16], [23], [43], [58]
	Kaspar	[9], [28], [37], [59]
	iRobiQ	[30], [44], [45]
	CARO	[30], [44], [45]
	Robota	[37], [59]
	Tito	
	FACE	[59], [60]
	R-50 Alice	[19]
	Autonomous social robot	[35]
	Hoap-3	[37]
	I-sobot	
	Ifbot	
	Bandit	[59]
	Infanoid	
Animal / creature	Keepon	[11], [27], [37], [59]
	Pleo	[31], [37], [59]
	Probo	[37], [61], [62]
	KiliRo	[53]
	Zoomer dog	[21]
	SAM	[26]
	Cat robot	[37]
	Bee-bot	[38]
	PABI	[63]
	AIBO	[59]
Muu		
Mobile robot	ROMO	[16], [23], [43]
	GIPY-1	[14], [37]
	Remote-controlled robot	[10]
	Rovio (WowWee)	[32]
	Labo-1	[46]
	Bubble blower	[59]
Lego Mindstorms NXT	[64]	
Ball-shaped robot	Sphero	[18]
	Roball	[59]
Other	TWC	[29]
	RBB	[34]

their engagement during the intervention. The most popular robot in this category is ROMO, developed by Romotive. It is composed of an iPod mounted on threads and has the ability to display a large variety of facial expressions by a virtual penguin agent on its screen [43]. Whereas, the other robots in the category do not have any visual displays or any facial components to display facial expressions. GIPY-1 [14] is a wheeled robot having a cylindrical shape, with a static neutral face drawn on it; Rovio is a remote-controlled truck-shaped robot [32]; whereas Labo-1, Bubble blower and Lego Mindstorms NXT are wheeled robots having a toy-car appearance. Labo-1 is equipped with infrared sensors, as well as a heat sensor, the robot is able to navigate autonomously, avoid obstacles and follow a heat source such as a child [46]. Additionally, the robot includes a speech synthesizer unit and is able to produce short spoken phrases using a neutral intonation to attract the children’s attention.



FIGURE 4. A child interacting with the humanoid robot Kaspar.

On the other hand, Bubble blower accomplishes the same task by blowing bubbles [59] and Lego Mindstorms NXT is used as a mediator to promote the interaction between the children and other individuals [64]. The last robot in this category is referred as “remote-controlled robot” without any additional information on the robot’s appearance and physical properties [10]. The robot is used for monitoring the negative facial expressions and body postures of children in response to fear triggered by the motions of the robot or the noise it is emitting during the interaction.

The fourth category includes 2 ball-shaped robots. We decided not to assign them to the mobile robots category and separate them because they provide a different level of tactile interaction. In addition to various types of in-hand manipulation, the children can kick or pick them, or move them randomly. Similar to mobile robots, these robots also have supplementary functions besides their motion patterns. Both robots have the function of emitting sound. Roball has the ability to communicate with children by short vocal messages and play a song [65]. Sphero can play music and combines this audio effect with its movements and multicolored LEDs to convey its affective states and emotions [18].

Finally, the last category is composed of 2 other robots that have not been assigned to the previous categories due to their embodiment. These two do not share the morphological characteristics of a standard robot, they are rather designed as interactive devices instead of fully-embodied robots. The robot-based basketball (RBB) robot consists of a robotic manipulator with a basketball hoop attached to its end-effector. RBB displays different affective states by moving the hoop in 3D with different speed levels, accompanied with soft background music [34]. On the other hand, the transitional wearable companion (TWC) robot provides a soft

TABLE 4. Total number of articles on the robots for children with ASD.

Robot type	All articles	Articles describing user studies with children
Humanoid	52 (66 %)	39 (70 %)
Animal / creature	14 (18 %)	7 (12 %)
Mobile robot	9 (11 %)	8 (14 %)
Ball-shaped robot	2 (2.5 %)	1 (2 %)
Other	2 (2.5 %)	1 (2 %)

interactive surface looking like an animal-shaped pillow or blanket [29]. TWC was not assigned to the animal/creature category for the same reason that the ball-shaped robots were not assigned to the mobile robot category: TWC provides a different level of physical interaction because it is a wearable robot. It has four soft “paws”, so that the children can carry it along by hugging it or wrapping it around their torso or their shoulders. The sensors embedded in the paws can detect the children’s touch and trigger child-adaptive feedback by changing the color of RGB LED strips on the paws. TWC also incorporates speakers through which it is possible for a child to listen to brief sounds or music.

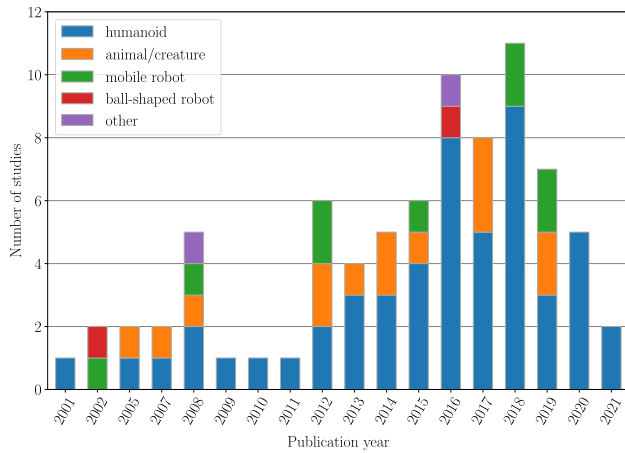
Based on the total number of articles on the use of social robots for children with ASD, humanoid robots appear to be the most popular, as seen in Table 4. The second place belongs to animal/creature category; and mobile robots, ball-shaped robots and the others follow them respectively. The popularity of robots belonging to humanoid or animal/creature categories may be explained by their capability to provide a higher level of social interaction based on their acquired social skills such as verbal/non-verbal interaction, behavioral cues, turn taking or imitation capabilities as well as displaying their affective states.

When the selected articles were reviewed and analyzed, we found out that some of the published articles were theoretical studies on the conceptual system design, mechanical implementation or interaction procedure. There were also two review articles [37], [59] reporting the use of robots but not disclosing user studies with children. Therefore we separated the articles describing user studies with children and computed the number of user studies with children based on the robot’s category. The results show that humanoid robots hold their place as the most popular category, but the second place is shared between animal/creature and mobile robot categories, as displayed in the second column of Table 4.

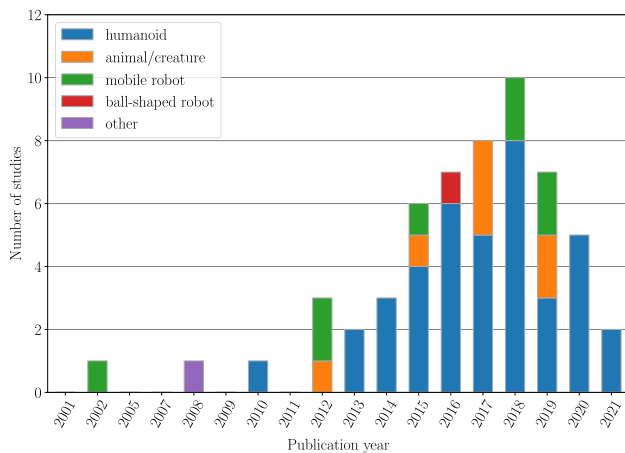
## 2) ROBOTS OVER THE YEARS

Due to the large number of robots used in the studies, the articles were grouped by the morphological category of these robots to improve the readability and understanding of the figures. The results are displayed over the years in Fig. 5.

The results demonstrate that the studies with the robots in the last two categories (i.e. ball-shaped robots and others) appear to be unique studies on the timeline. On the other hand, the robots in the animal/creature and mobile robots categories hold a consistent display, their numbers do not change drastically but they seem to maintain their



(a) Articles about robotic studies for children with ASD over the years



(b) Articles describing user studies with children with ASD

**FIGURE 5.** Number of all articles and only those describing research with the use of robots, broken down by types of robots.

presence over the years. However, the increasing number of studies, either conceptual or applied studies, performed with humanoid robots over the years supports the claim of the popularity mentioned in the previous section. Starting from early 2000's the number of articles on the use of social robots has been increasing throughout the years and reaches its maximum point in 2018. The figures also show that in the last two years, only the articles with humanoid robots were monitored based on the inclusion criteria. Nevertheless, the data for 2020 and 2021 should be treated with reserve, firstly, due to the COVID-19 pandemic, secondly due to the fact that the literature search for this review ended in May 2021.

### 3) ROBOTS USED FOR AGE GROUPS

Among the reviewed articles, only 35 of them reported the exact age and age ranges of children who participated in interaction studies with robots. We decided to group these studies into three age intervals according to the reported age distribution: (1) preschool age: 2-5 years, (2) primary school age: 6-9 years, (3) secondary school age: 10-14 years.

**TABLE 5.** Articles assigned to three age groups based on the age of the youngest child in the study. The third column depicts the robots that were used in the respective studies.

Age group	Article	Robot	
Preschool (2-5 years)	[22], [25], [32], [39]–[42]	NAO	
	[47], [56]		
	[30], [44], [45]	iRobiQ, CARO	
	[23], [43]	Darwin-Mini, ROMO	
	[61], [62]	Probo	
	[9]	Kaspar	
	[10]	Remote-controlled robot	
	[11]	Keepon	
	[21]	Zoomer Dog	
	[26]	SAM	
	[31]	Pleo	
	[32]	Rovio	
	[52]	ZECA	
Primary school (6-9 years)	[24], [55]	NAO	
	[50], [54]	ZECA	
	[14]	GIPY-1	
	[53]	KiliRo	
	[27]	Keepon	
	[35]	Autonomous social robot	
	[38]	Bee-bot	
	[64]	Lego Mindstorms NXT	
	[60]	FACE	
	Secondary school (10-14 years)	[12], [57]	ZECA
		[13]	NAO
[34]		Robot-based basketball	

However, some of the studies reported larger age intervals than the others, e.g. 4-8 years [22] or 7-20 years [60]. Although the studies reported the exact age range, some did not provide the mean age of the children, so we decided to make the group assignments based on the youngest child included in the study. The “preschool” group included 24 studies, while the “primary school” included 11 studies and “secondary school” 4 studies, as displayed in Table 5.

The results show that all the groups have in common the studies with humanoids NAO and ZECA. While NAO robot is widely preferred for the “preschool” group, it is also used in the studies conducted with primary and secondary school children. On the other hand, ZECA is more popular with primary and secondary children than the preschool ones. Moreover, the results also show that the robots in the animal/creature category are also widely used for children in the “preschool” group than the others.

### C. INTERVENTION

We analysed which skills were taught in robot-based interventions and grouped these skills in eight skill groups. Take into account that we only included original articles here; articles reporting the general feasibility of a robot to teach certain skills were not included. Table 6 shows the skill groups and skills taught in the respective robot-based intervention studies. The skill group taught by the highest amount of studies was ‘social interaction: general’ with 23 studies teaching related skills. The skills most often taught were ‘recognition of basic emotions’ by 19 studies and ‘getting into attention’ by ten studies.



**TABLE 6.** Skill groups and skills that were taught in the respective robot-based intervention studies. Some articles are listed twice or more often because they focused on two or more skills.

Skill group	Skills	Articles	Robot used
Social convention	Greeting skill	[9], [21], [32], [49], [51], [62]	Zoomer dog, Kaspar, NAO, Rovio, Probo
	Singing (children should learn to raise their hand when they want to do sth.)	[9], [49], [51]	Kaspar, NAO
	Sharing	[21], [62]	Zoomer dog, Probo
	Social convention: closing	[21]	Zoomer dog
	Ability to thank	[62]	Probo
	Basic speech: Saying please	[51]	NAO
Social interaction: General	Getting into interaction	[9], [11], [16], [18], [20], [31], [35], [45], [46], [53]	Darwin-Mini, ROMO, Kaspar, KiliRo, iRobiQ, CARO, Pleo, Keepon, Labo-1, Autonomous social robot, Sphero
	Turn-taking	[16], [21], [32], [35], [43], [46], [52], [56]	Zoomer dog, Darwin-Mini, ROMO, NAO, Rovio, Labo-1, ZECA, Autonomous social robot
	Child's engagement in an activity	[23], [26], [40], [43], [52]	Darwin-Mini, ROMO, SAM, ZECA, NAO
	Following / imitating movements	[9], [20], [46], [52], [60]	Kaspar, FACE, Labo-1, NAO, ZECA
	Social attention abilities	[11], [15], [39], [56]	NAO, Keepon
	Social interaction	[31], [41], [53]	KiliRo, Pleo, NAO
	Social abilities	[35]	Autonomous social robot
	Sensory processing skills	[23]	Darwin-Mini, ROMO
	Basic eye contact	[30]	iRobiQ, CARO
	Conversational interaction	[31]	Pleo
	Socio-emotional behaviors	[23]	Darwin-Mini, ROMO
Social interaction: Initiating	Focus on self-initiated interaction	[16], [41], [42]	Darwin-Mini, ROMO, NAO
	Playing a puzzle game (child needs to ask robot for help)	[25]	NAO
	Showing asked gestures (child needs to use a gesture to request for an object)	[64]	Lego Mindstorms NXT
Social interaction: Responding	Eye gaze following	[21], [44]	Zoomer dog, iRobiQ, CARO
	Response to a behavioral request	[12], [21]	Zoomer dog, ZECA
	Response to name	[21]	Zoomer dog
Emotions: Recognition	Recognition of basic emotions	[8], [9], [12], [13], [16], [19], [20], [22], [24], [27], [38], [44], [45], [47], [50], [52], [55], [57], [61]	NAO, Darwin-Mini, ROMO, Kaspar, Recognition, Keepon, iRobiQ, CARO, ZECA, Probo, R-50 Alice, Bee-Bot
	Reading emotions	[20], [30], [38]	iRobiQ, CARO, NAO, Bee-Bot
	Sound making (mapping emotions and sounds)	[11], [18]	Keepon, Sphero
	Context-emotion association	[22], [47]	NAO
	Discrimination between thoughts and emotions	[22]	NAO
Emotions: Expression	Mimic emotions learned in the robot training	[12], [13], [19], [24], [38], [47], [54]	NAO, R-50 Alice, ZECA, Bee-Bot
Emotions: Control	Touching to transfer the robot to a positive emotional state	[9], [18]	Sphero, Kaspar
	Control negative emotions	[27]	Keepon
	Emotion regulation	[43]	ROMO, Darwin Mini
Other skills	Self-care (self cleaning)	[49], [51]	NAO
	Cognitive skills	[64]	Lego Mindstorms NXT
	Listening comprehension	[40]	NAO
	Improve learning	[53]	KiliRo
	Drumming game	[32]	NAO, Rovio
	Rhythmic upper and lower body interpersonal synchrony	[32]	NAO, Rovio
	Moving on a count	[32]	NAO, Rovio
	Moving on a steady beat	[32]	NAO, Rovio
	Selecting particular colors	[64]	Lego Mindstorms NXT

We analysed the skill groups that were taught by the 38 studies we previously assigned to the three age groups ‘preschool age’ (2-5 years; 23 studies), ‘primary school age’ (6-8 years; 11 studies), and ‘secondary school age’ (10-14 years; 4 studies). The most frequently taught skill group

of the ‘preschool age’ studies was ‘social interaction: general’, followed by ‘emotions: recognition’. Both skill groups were also the most frequently taught in the ‘primary school age’ intervention studies; however, in this age group ‘emotions: recognition’ was taught by more studies than ‘social

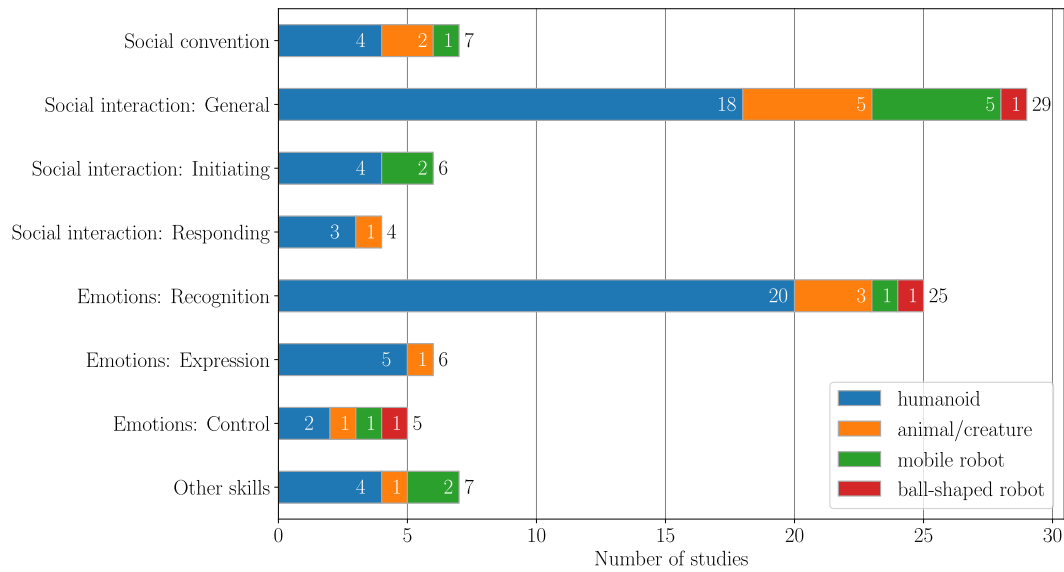


FIGURE 6. Skills taught with the use of different robot types.

interaction: general’. The skill group ‘emotions: expression’ was taught by as many studies as ‘social interaction: general’. Three of the four studies of the ‘secondary school age’ group taught ‘emotions: recognition’, but none of them taught ‘social interaction: general’. ‘Social convention’ was only taught in ‘preschool age’ studies.

Fig. 6 shows the number of studies using the respective robots types for interventions related to the eight skill groups. The robot NAO was used for the most skill groups, namely 6/8. NAO was the most frequently used robot for interventions on these six skill groups, namely ‘social convention’, ‘social interaction: general’, ‘social interaction: initiating’, ‘emotions: recognition’, ‘emotions: expression’, and ‘other skills’.

1) EMOTION RECOGNITION

We focused on studies with participants and did not include here articles reporting the general feasibility of a robot to teach emotions. Twenty-one studies provided intervention regarding emotion recognition. We provide the taught emotions in Table 7. We subsumed ‘happiness’, and ‘joy’; ‘fear’, ‘scared’, and ‘afraid’; ‘anger’, ‘mad’, and ‘annoyed’, respectively. This results in a total of seventeen different emotions including the neutral condition that were taught to be recognised (Table 7). One study did not specify the taught emotions [45]. The recognition of the emotions ‘happiness/joy’ and ‘sadness’ was most often taught. The recognition of ‘curious’, ‘proud’, ‘pleased’, ‘frustrated’, and ‘nervous’ were only taught by one study [16].

Fig. 7 shows all robots that were used for emotion recognition interventions. The most different emotions were taught by the robots ROMO and Darwin-Mini, followed by NAO (Fig. 7). The robot Probo was used to teach only two emotions.

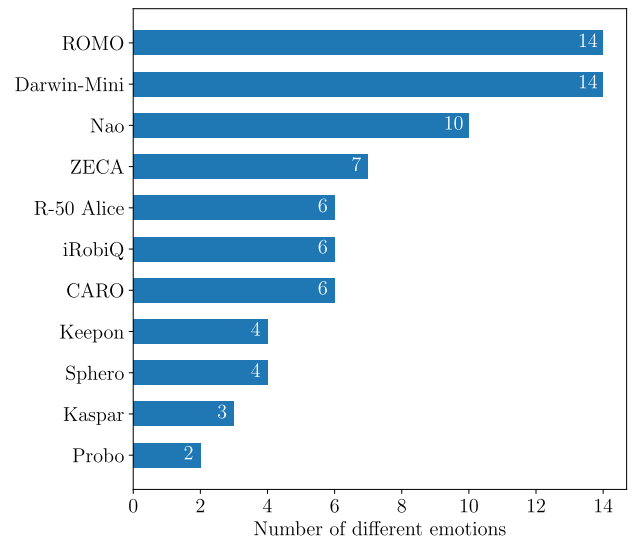


FIGURE 7. Total number of different emotions taught by each robot over all articles of the SLR.

2) EMOTION EXPRESSION

Seven studies taught the children to produce/imitate specific gestures that express emotions. We provide the taught emotions in Table 8. We subsumed ‘happiness’ and ‘joy’; ‘fear’ and ‘scared’; and ‘anger’, and ‘annoyed’, respectively. This results in a total of eight different emotions including the neutral condition that were taught to be expressed (Table 8). The expression of ‘fear/scared’ was most often taught, namely by all seven studies. Additionally the expressions of ‘hungry’ [24] and ‘neutral’ [19] were addressed once. Four different robots were used to teach the expression of emotions: NAO was used to teach the expression of 6 emotions, R-50

**TABLE 7. Emotion recognition taught in robot-based interventions. The third column shows the applied robots.**

Emotion recognition: Emotion taught	Article	Robot used	
Happiness/joy	[8], [13], [20], [22], [47], [55]	NAO	
	[12], [50], [52], [57]	ZECA	
	[30], [44]	iRobiQ, CARO	
	[61]	Probo	
	[11]	Keepon	
	[18]	Sphero	
	[16]	ROMO, Darwin-Mini	
	[9]	Kaspar	
	[19]	R-50 Alice	
	[38]	Bee-Bot	
Sadness	[8], [13], [20], [22], [47], [55]	NAO	
	[12], [50], [52], [57]	ZECA	
	[30], [44]	iRobiQ, CARO	
	[11], [27]	Keepon	
	[61]	Probo	
	[18]	Sphero	
	[16]	ROMO, Darwin-Mini	
	[9]	Kaspar	
	[19]	R-50 Alice	
	[38]	Bee-Bot	
Fear/scared/afraid	[8], [13], [20], [22], [24], [47], [55]	NAO	
	[12], [50], [57]	ZECA	
	[11]	Keepon	
	[18]	Sphero	
	[16]	ROMO, Darwin-Mini	
	[9]	Kaspar	
	[19]	R-50 Alice	
	[38]	Bee-Bot	
	Anger/mad/annoyed	[8], [13], [20], [22], [24], [47], [55]	NAO
		[12], [50], [57]	ZECA
[30], [44]		iRobiQ, CARO	
[18]		Sphero	
[16]		ROMO, Darwin-Mini	
[38]		Bee-Bot	
[27]		Keepon	
Surprised		[12], [50], [52], [57]	ZECA
		[30], [44]	iRobiQ, CARO
		[16]	ROMO, Darwin-Mini
	[19]	R-50 Alice	
	Disgust	[8], [13], [22]	NAO
[50]		ZECA	
[16]		ROMO, Darwin-Mini	
[19]		R-50 Alice	
Hungry		[8], [20], [24], [55]	NAO
Shy	[30], [44]	iRobiQ, CARO	
	[8]	NAO	
Love/hug	[16]	ROMO, Darwin-Mini	
Neutral condition	[8], [20], [55]	NAO	
	[13]	NAO	
	[50]	ZECA	
Excited	[19]	R-50 Alice	
	[11]	Keepon	
	[16]	ROMO, Darwin-Mini	
Tired	[8]	NAO	
	[16]	ROMO, Darwin-Mini	
Curious	[16]	ROMO, Darwin-Mini	
Proud	[16]	ROMO, Darwin-Mini	
Pleased	[16]	ROMO, Darwin-Mini	
Frustrated	[16]	ROMO, Darwin-Mini	
Nervous	[16]	ROMO, Darwin-Mini	
Not specified	[45]	iRobiQ, CARO	

Alice was used for 6 emotions, ZECA was used for 5 emotions, and Bee-Bot was used for 4 emotions.

**TABLE 8. Emotion expression taught in robot-based interventions. The third column shows the applied robots.**

Emotion expression: Emotion taught	Article	Robot used
Fear/scared	[13], [24], [47]	NAO
	[12], [54]	ZECA
	[19]	R-50 Alice
	[38]	Bee-Bot
Happiness/joy	[13], [47]	NAO
	[12], [54]	ZECA
	[19]	R-50 Alice
	[38]	Bee-Bot
Anger/annoyed	[13], [24], [47]	NAO
	[12], [54]	ZECA
	[38]	Bee-Bot
Sadness	[13], [47]	NAO
	[12], [54]	ZECA
	[19]	R-50 Alice
	[38]	Bee-Bot
Disgust	[13]	NAO
	[19]	R-50 Alice
Surprised	[19]	R-50 Alice
	[12]	ZECA
Neutral condition	[19]	R-50 Alice
Hungry	[24]	NAO

**TABLE 9. Articles reporting challenges, limitations, and concerns related to small sample size and heterogeneous sample, respective number of participants with ASD and included ASD subgroups. Abbreviations: ASD = autism spectrum disorder; ASD-gen: Participants with ASD without further assignment to subgroups; HF = high functioning; LF = low functioning.**

Challenge/Limitation/Concern	Article	Participants with ASD	ASD subgroup
Small sample size/limited generalisability of findings	[15]	11	ASD-gen
	[10]	21	ASD-gen
	[13]	1	ASD-gen
	[22]	14	ASD-gen
	[23]	3	1 LF, 2 HF
	[24]	13	LF
	[25]	8	ASD-gen
	[9]	2	LF
	[26]	13	HF
	[27]	27	ASD-gen
	[44]	15	ASD-gen
	[53]	9	ASD-gen
	[49]	2	ASD-gen
	[61]	3	ASD-gen
	[60]	5	ASD-gen
Heterogeneous sample	[18]	12	ASD-gen
	[46]	6	ASD-gen
	[19]	14	6 LF, 8 HF
	[12]	3	HF
	[64]	14	ASD-gen
	[46]	6	ASD-gen
	[19]	14	6 LF, 8 HF

### 3) EMOTION CONTROL

Four studies taught the children to control emotions. Zorcec and colleagues [9] taught the participants to make the robot happy again when it is sad. Costescu and colleagues [27] used the robot Keepon to teach the control of sadness and anger. Boccanfuso and colleagues [18] used the robot Sphero to teach the participants to transfer the robot to a positive

emotional state when touching it. Javed and Park [43] used the robots ROMO and Darwin-Mini to teach the participants the regulation of 14 emotional expressions.

#### D. CHALLENGES

In qualitative analysis, we investigated the challenges, limitations, and concerns reported by the articles. The challenges include the ones that refer to the specificity of children with autism, those that refer to the robot characteristics and those who refer to the interaction/intervention including a child and a robot. Some methodological challenges of performing the studies were reported as well.

##### 1) CHILDREN WITH ASD SPECIFICITY

Nine studies reported the challenges, limitations, and concerns regarding the characteristics of the specific target group of children with ASD.

The articles reported low expressivity of children as a challenge and that included both low-functioning and high-functioning [34] or only high-functioning participants [51] with ASD. Another study using iRobiq and CARO robots outlined the challenge to determine the responses of children to training stimuli [30]. Another study using NAO robot outlined that automatic recognition of engagement requires personalising for each child separately [47].

Among the other reported challenges limited attention span of children was outlined [31] as well as limited ability to determine whether a child really understood the Probo robot animations used in an intervention [61]. Another study expressed concern that the children did not understand emotions expressed by the robots Nao and Darwin-Mini [7].

One study reported a challenge of wearing physiological sensors as being problematic for some children [58].

Some other studies mentioned variability on the level of children functioning as a challenge in designing intervention [51] or various parent's compliance with intervention [30]. Some articles reported that tasks were too complex for some children [46], [64] - in those papers children were not assigned to ASD subgroups, so it is not possible to determine whether that applied to low-functioning children only. It might be also the case of an intervention design, while the studies used Lego Mindstorms NXT and Labo-1 robots.

While reading the papers we found it disturbing that some of the papers still use "autistic children" versus "normal children" expressions, while the current approach is to put the person first and to put "typical" rather than stigmatizing "normal" in comparisons.

##### 2) ROBOT AND CHILD-ROBOT INTERACTION

There were papers that reported challenges that result from the robot construction or the specificity of the child-robot interaction.

The ones that referred to robots themselves outlined distractors on robots (NAO) [15], no or too little adaptation to therapeutic needs of children (NAO) [36], gender of a robot that might affect interaction (female robot

R-50 Alice was used in the study), and lack of multimodal interaction [19].

Another group of papers reported challenges, limitations, and concerns related to the interaction of children with the robot during intervention sessions. In a study using iRobiq and CARO robots the concern was raised whether the interaction with a robot is too complex for a child without the help of the therapist [45]. Another study (with Labo-1 robot) mentioned unstructured and unconstrained interaction as a challenge [46]. The other concerns on interaction were only generally expressed as a problem with determining the intervention success [19], [45], [50].

##### 3) METHODOLOGICAL ISSUES

Nineteen articles discussed the small sample size and the related limited generalisability of their findings and three articles discussed limitations related to the heterogeneous sample of participants. Table 9 depicts the number of participants with ASD and the ASD subgroups for the respective articles. The 19 articles reporting a small sample size included 1-27 participants with ASD, respectively. The mean number of participants with ASD was around 10 ( $9.58 \pm 6.84$ ), the median was 9.

Three studies [10], [22], [44] raised limitations related to gender ratio. Reference [10] included 20 males and one female with ASD, [22] included 12 males and two females with ASD, and [44] included 15 males and no female with ASD. Reference [60] and [51] reported challenges regarding the combination of robots and emotion recognition. Reference [60] furthermore reported challenges regarding the integration of data from different sensors. Reference [34] discussed low interrater reliability in determining emotions of children and the challenge that several affective states could co-occur at different arousal levels. Reference [46] discussed potential interviewer bias and [47] discussed the potential influence of the annotators' cultural background on their annotations. Eleven studies [19], [21]–[23], [26], [27], [32], [44], [48], [53], [61] discussed further limitations related to study design and procedures (e.g., problems related to the room where the experiments were carried out, order of appearance of robots may have influenced results, additional experiments or outcome measures are warranted, limitations of applied interviews and questionnaires).

While analysing the studies we found that not all researchers report the characteristics of the participant group. Missing information of age distribution, sex, and level of functioning, results in the study being less replicable and valid for meta-analysis.

#### E. RECOMMENDATIONS

##### 1) LONGITUDINAL STUDIES

In five articles [30], [45], [47], [54], [59], researchers suggested that longitudinal studies over an extended time period should be conducted in the future. In two studies [30], [45]



each child attended eight clinical sessions (each lasted approximately 30–40 min and contained ten trials for two training interactions). The third study [47] focused on single day recordings of the children. The fourth article [59] is a review and indicates that described studies over a few days or, rarely, a few weeks or months. The fifth study [54] consisted of two sessions per children during one day preceded by a familiarization session lasting 10 minutes.

## 2) STUDY DESIGN

In six articles [10], [22], [24], [27], [32], [44], authors report that additional measures/assessments should be added in future studies. In two articles, researchers indicate the need to conduct research also in a different environment, e.g., school or group sessions [27], research within clinical facilities, but also in the child's natural environment [25].

## 3) COURSE OF THE INTERVENTION SESSIONS

Recommendations regarding the course of the intervention sessions concern interruptions of the sessions, verbal instructions given to the child and objects used during the interventions. One study [15] suggests that sessions should be conducted without interruptions. Two studies [43], [58] recommended the wording of the verbal instructions to be short, brief, simple, and concrete. Another study [32] recommended the inclusion of object-free, creative movement interventions involving rhythm, dance, yoga, and play therapies into the standard-of-care treatment of children with ASD.

## 4) PARTICIPANTS' CHARACTERISTICS

This section describes the recommendations on the warranted characteristics of children participating in studies on robot-based interventions. Researchers indicate that certain motor skills [57] and some verbal response capacities [15] of children are necessary. Some studies [12], [21], [30], [54] recommended including children with ASD with different levels of functioning. In addition, studies should include a control group of typically developing children [12], [44].

## 5) PARTICIPANTS' EXPERIENCE WITH ROBOTS

One study [25] recommended that children should not have previous experience with a robot, so as to rule out the familiarity effect (the participants of that study had previous experience with the robot). However, another study [64] even recommended a familiarisation phase, where the children can freely explore the robot in order to reduce anxiety levels and make the robot more attractive. Similarly, the next study [40] suggested the therapist should familiarize the participants with the intervention and the robot. This was due to the fact that at the beginning of the interventions, 2 from 3 participants were not responding to the robot. Researchers observed that initial human prompts helped the children understand how to interact with the robot.

## 6) SUSTAINING PARTICIPANTS' ENGAGEMENT DURING THE INTERVENTION

One article [32] indicated future research should develop diverse training activities that can sustain children's engagement over prolonged training durations. In reference to the above, another study [40] suggested that to increase the motivation of children during intervention sessions can be used to by interspersing the requests a child has mastered with the skills they are learning during the intervention. Another study [52] described using tablet by children to control and respond to robot to improve the child's engagement in the activity. Another study [39] indicated that among the social stimuli used by the robot such as movement, vision and speech, the last of them is the most effective in attracting a child's attention. The average latencies for paying attention toward the visual, speech, and motion social stimuli were 3.441 s, 3.277 s, and 3.732 s, respectively. While the number of attention paid to the speech was 17.53 times, to motion 14.32 times, and to visual stimuli 11.10 times. In addition, another study [49] indicated that children were showing a more apparent emotional response while the robot talked or made hand gestures. The results of the next study [41] indicate that the child's motivation can be enhanced when the interaction with the robot is meaningful to the child by using game scenarios. However, an attractive study scenario may not be sufficient to keep participants engaged. In one study [40] the robot was using five phrases for social praise which was paired with dances. Despite the participants initially enjoying these reinforcers during the interventions, researchers noticed they became monotonous over longer periods of time. They suggest that this could be improved in future interventions by increasing the variety of reinforcers delivered by the robot such as including reinforcers typically used by human therapists such as edibles, preferred items (e.g., stickers), or other forms of social reinforcers (e.g., jokes, praise, and songs). Another study [52] also found that the reward aspect is needed (such as robot's dancing or cheering). In the next study [24] reinforcement (snacks or access to toys) was offered by the teacher at the end of each pretest, post test and training session. Researchers also suggest that reward systems should be customized to individual subjects' needs, interests, and social abilities [40], [44]. The clinicians also recommended that the robot should build a positive relationship with the children and offer reinforcers (e.g., preferred items, edibles, and social reinforcers) without making requests or demands. Such a process builds the association for a child that the robot is fun and will lead to more fun elements in the future [40].

## 7) MEASURING ENGAGEMENT

As measurement tools, researchers propose Modified Fogg's Behavioral Model (MFBM) to demonstrate the motivation, i.e., level of engagement shown by the children while interacting with a robot [48], [51]. In another study researchers presented initial design schemes of the robotic framework for initiating and estimation engagement [66].

A musical stimulus will be used for initiating engagement. The system needs to be able to detect emotional and social states of a child. Once perceived, it is imperative that the robotic system displays appropriate expressive behaviors and stimulating motions to engage a child emotionally and socially. Researchers use RGB-D depth sensors (e.g. Microsoft Kinect) to monitor the physical activities of a child to estimate the social engagement.

## 8) ROBOTS

This subsection collected experiences with the use of individual robots, which may be a guide for future research applying robots for interventional purposes.

### *a: NAO AND DARWIN-MINI*

In one of the studies [7], a system to teach five of the six universal emotions was developed, i.e., sadness, anger, happiness, fear, and surprise (disgust was not investigated). The researchers created an emotional gesture set that has been performed on the NAO and the Darwin-Mini robots. The relatively simple robot (Darwin-Mini) was able to express happiness better while the more advanced robot (NAO) was able to express sadness better. The study participants had difficulty differentiating between some emotions expressed by the NAO robot: Happiness and surprise were commonly confused with one another, as were fear and sadness. Therefore, when creating future gesture sets, the focus should be on a better differentiation between these emotion sets. In another study, using the Darwin-Mini robot [58], researchers also make recommendations on the gestures that represent emotions performed by the robot. Happiness and Sadness got higher scores because of the clear design features. However, there are some features making them confusing. High recognition rates were achieved, but more efforts are needed to adjust the robot body expressions in such a way that they would be perceived consistently among participants. Moreover, the emotion expressed is not exactly like that in real life, since expression in real life is subtler. To express emotion more authentically, the motions should be smaller.

### *b: ZECA*

The study [50] where the ZECA robot (called the Zeno R-50 there) was used consisted of eight stages. Stage 3, 5, and 7 were the main experiment game. For each game stage, a sequence of 13 emotions was randomly shown by Zeno. After showing each emotion, Zeno would resume a neutral pose and wait for the child's response. The child's task was to predict/guess what emotion the robot is trying to show. In total, 37 animations were used. Nineteen of these consisted of only facial expressions, including a neutral expression. The other 18 animations were each based on the gesture mimicry of 18 human actors. The animations were developed to closely mimic the expressions of the actors' facial and upper body expressions. Addition of gestures for Happy greatly lowered the guess accuracy in both groups. This is

due to the fact that the gestures could represent more than one emotion, e.g., happiness and surprise when meeting an unexpected friend. However, a significant improvement was shown for Disgust. Since the robot lacks the ability to show nose wrinkler, it is understandable why Disgust had a low recognition rate for facial expression.

### *c: PROBO*

One of the studies using the Probo robot [61] had two phases, one phase consisted of watching a video that was played on Probo's belly representing a situation that generates an emotion followed by a neutral facial expression of the robot and the other phase was identical to the first one, with the difference that the video was followed by facial expression of the robot with the right emotion. The emotion recognition performance was recorded for each participant in two phases. In each exposure, the participant had to recognize one of the two emotions, i.e., happiness or sadness, from an animation in which something positive or negative was happening with Probo. The results showed that the performance of participants improved when Probo's active face was used, compared with the phase where Probo expressed a neutral face. Additionally, using Probo's active face has similar effects in increasing the emotion recognition performance of both happiness and sadness. In the second study using the Probo robot [62], the main experimenter together with the child's therapist and parents identified a specific social skill deficit and an individualized social story was developed for each of the skills. In one phase of the study, Probo was telling a story. The robot also expressed the emotions that were included in the story, i.e., happiness and sadness, and moved its head, eyes and trunk. After the robot had told the story, the child had to exercise the social ability described above that was targeted in the story. The story is played on the robot without interruption, so the therapist cannot stop the story when necessary. Accordingly, researchers recommend introducing more interactive stories, so that the robot can respond to the actions and the reactions of a child during the presentation of the social stories. Moreover, the two therapists involved in this study offered valuable feedback on the design of the robot. The size of the robot (80 cm) appears to be appropriate for interaction with children as is the relative size of the head compared to the body so it is easy for the children to focus their attention on the facial expressions. The face area (eyes and mouth) is not really a triangle, but rather a rectangle, which probably needs more attention resources than a triangle does. Also, it was suggested that a shorter trunk would increase the visibility of the facial expressions of Probo, so the mouth would be more visible to the children when the trunk is in the down position. Therapists did not make any remarks or negative reactions to the green color of Probo's coat. A demonstration was held for the other children of the autism center and the researchers observed that even those children who had problems with touching and being touched, were able to touch and interact with the robot at the end of the session.

#### d: ROMO

In another study [43] researchers decided to design our own character. The original Romo, developed by Romotive, came with a blue monster-like character capable of articulating emotion through the display of a variety of facial expressions. They replaced the monster with a penguin character taking into account several factors to ensure a friendly design for children with autism: 1) Simple and short verbal interactions, 2) No complex patterns for background (of the app, or agent), 3) No horizontal scroll bars 4) To minimize distractions, no background music, 5) No flashing or moving content, 6) Simple layout with minimal info display on screen, 6) Muted colors to minimize any possible discomfort.

#### 9) LEARNING OUTCOMES

One study [24] suggested that it should be investigated whether or not the learning outcomes can be maintained for a longer period of time (i.e., beyond two weeks). In order to examine this, it was recommended observations of the behaviors of the participants in schools and at home for an extended period of time. In another study [14], researchers came to similar conclusions. They indicated further experiments are needed to investigate the repeatability and durability of the effects.

#### IV. LIMITATIONS OF THE STUDY

We performed a systematic literature review regarding the use of robots in interventions in autism.

Out of the initial list of over 600 papers, we have included 64 papers in qualitative analysis and 60 papers in quantitative summary. We acknowledge that the study is not free from some risks. First of all, it was performed in two rounds. Although we were trying to keep the process as similar as possible, the list of participants that tagged the papers by title and abstract was different, which might result in a slight change among the two stages. We also revealed the papers from three search engines, focusing on search by title and keywords. We believe that the most important studies were included, however adding more search engines and searching by abstract might extend the list. In our study we have not decided to include all papers found by abstract, as the list was too extensive to manually tag them in a reasonable time. Another limitation of the study is that our review can only reflect the use of robots for autism intervention purposes in a limited cultural area as all included studies were performed in western world countries. In the future, a comparison with other cultures (e.g. in Asia) would be interesting as these might encounter different challenges with regard to robot-based interventions. It was not the focus of the present study to analyse the intervention success of the different robots for different intervention aims. Future studies focusing on such an evaluation could add important findings on the use of robots for clinical practice. Despite the raised limitations, our study is valid and repeatable, as we paid special attention to reporting it thoroughly using PRISMA standards.

#### V. CONCLUSION

The study revealed that the interest in using robots increases over the years as more and more studies are performed. Moreover, some robot types (mostly humanoid ones) are more frequently used. The robots are used as social companions, but the range of skills trained with the use of them is extensive, with emotion recognition and interaction skills being the primary focus.

The study might be of interest to therapists, who plan or are curious about the use of robots in autism therapy. The study might be also of use for the researchers and practitioners, who develop new robots and diverse technological concepts used in those. Our future works in EMBOA project include development of guidelines how to use emotion recognition technologies in order to observe and enhance child-robot interaction. The practical studies will benefit from this review in several manners. First of all, we are well aware of the importance of the participant group construction and reporting the detailed information on gender, developmental rather than chronological age or at least the functioning level. We found multiple studies that were preliminary, and included adults or typically developing children only. Moreover, most of the studies included small sample of children with autism. The results show the need for more comprehensive studies, including both more participants, but also covering more factors that influence child-robot interaction.

#### ACKNOWLEDGMENT

(Katrin D. Bartl-Pokorny and Małgorzata Pykała contributed equally to this work.) The authors thank Srividya Tirunellai for assistance in the literature search process. The European Commission's support for the production of this publication does not constitute an endorsement of the contents, which reflect the views only of the authors, and the Commission cannot be held responsible for any use which may be made of the information contained therein.

#### REFERENCES

- [1] L. Zwaigenbaum and M. Penner, "Autism spectrum disorder: Advances in diagnosis and evaluation," *BMJ*, vol. 361, p. k1674, May 2018.
- [2] J. Baio, L. Wiggins, D. L. Christensen, M. J. Maenner, J. Daniels, Z. Warren, M. Kurzius-Spencer, W. Zahorodny, C. R. Rosenberg, T. White, and M. S. Durkin, "Prevalence of autism spectrum disorder among children aged 8 years—autism and developmental disabilities monitoring network, 11 sites, United States, 2014," *MMWR Surveill. Summaries*, vol. 67, no. 6, p. 1, 2018.
- [3] C. Lord, M. Elsabbagh, G. Baird, and J. Veenstra-Vanderweele, "Autism spectrum disorder," *Lancet*, vol. 392, no. 10146, pp. 508–520, 2018.
- [4] S. Keele, "Guidelines for performing systematic literature reviews in software engineering," Keele Univ., Keele, U.K., Tech. Rep. EBSE-2007-01, 2007.
- [5] M. Turner, B. Kitchenham, D. Budgen, and P. Brereton, "Lessons learnt undertaking a large-scale systematic literature review," in *Proc. 12th Int. Conf. Eval. Assessment Softw. Eng.*, Swindon, U.K.: BCS Learning & Development Ltd., 2008, pp. 110–118.
- [6] (Oct. 2017). *Prisma Transparent Reporting of Systematic Reviews and Meta-Analyses*. [Online]. Available: <http://www.prisma-statement.org/>
- [7] B. A. English, A. Coates, and A. Howard, "Recognition of gestural behaviors expressed by humanoid robotic platforms for teaching affect recognition to children with autism—A healthy subjects pilot study," in *Social Robotics*, A. Kheddar, E. Yoshida, S. S. Ge, K. Suzuki, J.-J. Cabibihan, F. Eyssel, and H. He, Eds. Cham, Switzerland: Springer, 2017, pp. 567–576.



- [8] M. A. Miskam, S. Shamsuddin, M. R. A. Samat, H. Yussof, H. A. Ainudin, and A. R. Omar, "Humanoid robot NAO as a teaching tool of emotion recognition for children with autism using the Android app," in *Proc. Int. Symp. Micro-NanoMechatronics Hum. Sci. (MHS)*, Nov. 2014, pp. 1–5.
- [9] T. Zorcec, B. Robins, and K. Dautenhahn, "Getting engaged: Assisted play with a humanoid robot kaspar for children with severe autism," in *Proc. ICT Innov., Macedonia, Eng. Life Sci.* Springer, 2018, pp. 198–207.
- [10] G. Zantinge, S. van Rijn, L. Stockmann, and H. Swaab, "Concordance between physiological arousal and emotion expression during fear in young children with autism spectrum disorders," *Autism*, vol. 23, no. 3, pp. 629–638, Apr. 2019, doi: [10.1177/1362361318766439](https://doi.org/10.1177/1362361318766439).
- [11] H. Kozima, C. Nakagawa, and Y. Yasuda, "Children-robot interaction: A pilot study in autism therapy," in *From Action to Cognition* (Progress in Brain Research), vol. 164, C. von Hofsten and K. Rosander, Eds. Amsterdam, The Netherlands: Elsevier, 2007, pp. 385–400. [Online]. Available: <https://www.sciencedirect.com/science/article/pii/S0079612307640217>
- [12] S. Costa, F. Soares, A. P. Pereira, C. Santos, and A. Hiolle, "A pilot study using imitation and storytelling scenarios as activities for labelling emotions by children with autism using a humanoid robot," in *Proc. 4th Int. Conf. Develop. Learn. Epigenetic Robot.*, Oct. 2014, pp. 299–304.
- [13] D. Conti, G. Trubia, S. Buono, S. Di Nuovo, and A. Di Nuovo, "Affect recognition in autism: A single case study on integrating a humanoid robot in a standard therapy," *Qwerty Open Interdiscipl. J. Technol., Culture Educ.*, vol. 14, no. 2, pp. 66–87, Dec. 2019.
- [14] I. Giannopulu and G. Pradel, "From child-robot interaction to child-robot-therapist interaction: A case study in autism," *Appl. Bionics Biomech.*, vol. 9, no. 2, pp. 173–179, 2012.
- [15] F. Alnajjar, M. Cappuccio, A. Renawi, O. Mubin, and C. K. Loo, "Personalized robot interventions for autistic children: An automated methodology for attention assessment," *Int. J. Social Robot.*, vol. 13, no. 1, pp. 67–82, Feb. 2021.
- [16] H. Javed, M. Jeon, A. Howard, and C. H. Park, "Robot-assisted socio-emotional intervention framework for children with autism spectrum disorder," in *Proc. Companion ACM/IEEE Int. Conf. Hum.-Robot Interact.*, Mar. 2018, pp. 131–132.
- [17] M. Hirokawa, A. Funahashi, Y. Pan, Y. Itoh, and K. Suzuki, "Design of a robotic agent that measures smile and facing behavior of children with autism spectrum disorder," in *Proc. 25th IEEE Int. Symp. Robot Hum. Interact. Commun. (RO-MAN)*, Aug. 2016, pp. 843–848.
- [18] L. Boccanfuso, E. Barney, C. Foster, Y. A. Ahn, K. Chawarska, B. Scassellati, and F. Shic, "Emotional robot to examine different play patterns and affective responses of children with and without ASD," in *Proc. 11th ACM/IEEE Int. Conf. Hum.-Robot Interact. (HRI)*, Mar. 2016, pp. 19–26.
- [19] A. Ghorbandaei Pour, A. Taheri, M. Alemi, and A. Meghdari, "Human-robot facial expression reciprocal interaction platform: Case studies on children with autism," *Int. J. Social Robot.*, vol. 10, no. 2, pp. 179–198, Apr. 2018.
- [20] M. A. Miskam, M. A. C. Hamid, H. Yussof, S. Shamsuddin, N. A. Malik, and S. N. Basir, "Study on social interaction between children with autism and humanoid robot NAO," in *Applied Mechanics and Materials*, vol. 393. Zürich, Switzerland: Trans Technology Publications, 2013, pp. 573–578.
- [21] K. Silva, M. Lima, A. Santos-Magalhães, C. Fafiães, and L. de Sousa, "Living and robotic dogs as elicitors of social communication behavior and regulated emotional responding in individuals with autism and severe language delay: A preliminary comparative study," *Anthrozoös*, vol. 32, no. 1, pp. 23–33, Jan. 2019, doi: [10.1080/08927936.2019.1550278](https://doi.org/10.1080/08927936.2019.1550278).
- [22] F. Marino, P. Chilà, S. T. Sfrassetto, C. Carrozza, I. Crimi, C. Failla, M. Busà, G. Bernava, G. Tartarisco, D. Vagni, L. Ruta, and G. Pioggia, "Outcomes of a robot-assisted social-emotional understanding intervention for young children with autism spectrum disorders," *J. Autism Develop. Disorders*, vol. 50, no. 6, pp. 1973–1987, Jun. 2020.
- [23] H. Javed, M. Jeon, and C. H. Park, "Adaptive framework for emotional engagement in child-robot interactions for autism interventions," in *Proc. 15th Int. Conf. Ubiquitous Robots (UR)*, Jun. 2018, pp. 396–400.
- [24] W.-C. So, M. K.-Y. Wong, C. K.-Y. Lam, W.-Y. Lam, A. T.-F. Chui, T.-L. Lee, H.-M. Ng, C.-H. Chan, and D. C.-W. Fok, "Using a social robot to teach gestural recognition and production in children with autism spectrum disorders," *Disab. Rehabil., Assistive Technol.*, vol. 13, no. 6, pp. 527–539, Aug. 2018.
- [25] C. L. van Straten, I. Smeekens, E. Barakova, J. Glennon, J. Buitelaar, and A. Chen, "Effects of robots' intonation and bodily appearance on robot-mediated communicative treatment outcomes for children with autism spectrum disorder," *Pers. Ubiquitous Comput.*, vol. 22, no. 2, pp. 379–390, Apr. 2018.
- [26] S. A. Koch, C. E. Stevens, C. D. Clesi, J. B. Lebersfeld, A. G. Sellers, M. E. McNew, F. J. Biasini, F. R. Amthor, and M. I. Hopkins, "A feasibility study evaluating the emotionally expressive robot SAM," *Int. J. Social Robot.*, vol. 9, no. 4, pp. 601–613, Sep. 2017.
- [27] C. A. Costescu, B. Vanderborgh, and D. O. David, "Robot-enhanced CBT for dysfunctional emotions in social situations for children with ASD," *J. Evidence-Based Psychotherapies*, vol. 17, no. 2, pp. 119–132, Sep. 2017.
- [28] C. A. G. J. Huijnen, M. A. S. Lexis, and L. P. de Witte, "Matching robot KASPAR to autism spectrum disorder (ASD) therapy and educational goals," *Int. J. Social Robot.*, vol. 8, no. 4, pp. 445–455, Aug. 2016.
- [29] B. Özcan, D. Caligiore, V. Sperati, T. Moretta, and G. Baldassarre, "Transitional wearable companions: A novel concept of soft interactive social robots to improve social skills in children with autism spectrum disorder," *Int. J. Social Robot.*, vol. 8, no. 4, pp. 471–481, Aug. 2016.
- [30] S.-S. Yun, H. Kim, J. Choi, and S.-K. Park, "A robot-assisted behavioral intervention system for children with autism spectrum disorders," *Robot. Auto. Syst.*, vol. 76, pp. 58–67, Feb. 2016.
- [31] E. S. Kim, C. M. Daniell, C. Makar, J. Elia, B. Scassellati, and F. Shic, "Potential clinical impact of positive affect in robot interactions for autism intervention," in *Proc. Int. Conf. Affect. Comput. Intell. Interact. (ACII)*, Sep. 2015, pp. 8–13.
- [32] S. M. Srinivasan, I. K. Park, L. B. Neelly, and A. N. Bhat, "A comparison of the effects of rhythm and robotic interventions on repetitive behaviors and affective states of children with autism spectrum disorder (ASD)," *Res. Autism Spectr. Disorders*, vol. 18, pp. 51–63, Oct. 2015.
- [33] M. Leo, M. D. Coco, P. Carcagni, C. Distanto, M. Bernava, G. Pioggia, and G. Palestra, "Automatic emotion recognition in robot-children interaction for ASD treatment," in *Proc. IEEE Int. Conf. Comput. Vis. Workshop (ICCVW)*, Dec. 2015, pp. 537–545.
- [34] C. Liu, K. Conn, N. Sarkar, and W. Stone, "Online affect detection and robot behavior adaptation for intervention of children with autism," *IEEE Trans. Robot.*, vol. 24, no. 4, pp. 883–896, Aug. 2008.
- [35] B. Scassellati, L. Boccanfuso, C.-M. Huang, M. Mademtzi, M. Qin, N. Salomons, P. Ventola, and F. Shic, "Improving social skills in children with ASD using a long-term, in-home social robot," *Sci. Robot.*, vol. 3, no. 21, pp. 1–10, Aug. 2018.
- [36] S. Shamsuddin, H. Yussof, L. Ismail, F. A. Hanapiyah, S. Mohamed, H. A. Piah, and N. I. Zahari, "Initial response of autistic children in human-robot interaction therapy with humanoid robot NAO," in *Proc. IEEE 8th Int. Colloq. Signal Process. Appl.*, Mar. 2012, pp. 188–193.
- [37] C. A. G. J. Huijnen, M. A. S. Lexis, R. Jansens, and L. P. de Witte, "Mapping robots to therapy and educational objectives for children with autism spectrum disorder," *J. Autism Develop. Disorders*, vol. 46, no. 6, pp. 2100–2114, Jun. 2016.
- [38] E. Pérez, A. Gilbert, G. Lorenzo Lledó, A. Lorenzo, and A. Lledó, "Educational intervention for students with asd: Emotion production and recognition through the bee-bot robot," in *Proc. EDULEARN*, Jul. 2019, pp. 3750–3758, doi: [10.21125/edulearn.2019.0972](https://doi.org/10.21125/edulearn.2019.0972).
- [39] F. Mehmood, H. Mahzoon, Y. Yoshikawa, H. Ishiguro, H. Sadia, S. Ali, and Y. Ayaz, "Attentional behavior of children with ASD in response to robotic agents," *IEEE Access*, vol. 9, pp. 31946–31955, 2021.
- [40] W.-Y.-G. Louie, J. Korneder, I. Abbas, and C. Pawluk, "A study on an applied behavior analysis-based robot-mediated listening comprehension intervention for ASD," *J. Paladyn Behav. Robot.*, vol. 12, no. 1, pp. 31–46, Oct. 2020, doi: [10.1515/pjbr-2021-0005](https://doi.org/10.1515/pjbr-2021-0005).
- [41] I. van den Berk-Smeekens, M. van Dongen-Boomsma, M. W. P. D. Korte, J. C. D. Boer, I. J. Oosterling, N. C. Peters-Scheffer, J. K. Buitelaar, E. I. Barakova, T. Lourens, W. G. Staal, and J. C. Glennon, "Adherence and acceptability of a robot-assisted pivotal response treatment protocol for children with autism spectrum disorder," *Sci. Rep.*, vol. 10, no. 1, pp. 1–11, Dec. 2020.
- [42] M. W. De Korte, I. van den Berk-Smeekens, M. van Dongen-Boomsma, I. J. Oosterling, J. C. Den Boer, E. I. Barakova, T. Lourens, J. K. Buitelaar, J. C. Glennon, and W. G. Staal, "Self-initiations in young children with autism during pivotal response treatment with and without robot assistance," *Autism*, vol. 24, no. 8, pp. 2117–2128, Nov. 2020, doi: [10.1177/1362361320935006](https://doi.org/10.1177/1362361320935006).



- [43] H. Javed and C. H. Park, "Interactions with an empathetic agent: Regulating emotions and improving engagement in autism," *IEEE Robot. Autom. Mag.*, vol. 26, no. 2, pp. 40–48, Jun. 2019.
- [44] S.-S. Yun, J. Choi, S.-K. Park, G.-Y. Bong, and H. Yoo, "Social skills training for children with autism spectrum disorder using a robotic behavioral intervention system," *Autism Res.*, vol. 10, no. 7, pp. 1306–1323, 2017.
- [45] S.-S. Yun, J. Choi, and S.-K. Park, "Robotic behavioral intervention to facilitate eye contact and reading emotions of children with autism spectrum disorders," in *Proc. 25th IEEE Int. Symp. Robot Hum. Interact. Commun. (RO-MAN)*, Aug. 2016, pp. 694–699.
- [46] K. Dautenhahn and I. Werry, "A quantitative technique for analysing robot-human interactions," in *Proc. IEEE/RSJ Int. Conf. Intell. Robots Syst.*, Sep. 2002, pp. 1132–1138.
- [47] O. Rudovic, J. Lee, L. Mascarell-Maricic, B. W. Schuller, and R. W. Picard, "Measuring engagement in robot-assisted autism therapy: A cross-cultural study," *Frontiers Robot. AI*, vol. 4, p. 36, Jul. 2017.
- [48] A. A. Aziz, F. F. M. Moganan, M. Mokhsin, N. Sakamat, and A. Ismail, "Humanoid robot intervention with autism: The conceptual model indemonstrating the emotional responses of children with autism," in *Proc. 7th Int. Conf. Kansei Eng. Emotion Res. Malaysia*: Springer, 2018, pp. 574–579.
- [49] A. A. Aziz, F. F. M. Moganan, A. Ismail, and A. M. Lokman, "Autistic children's kansei responses towards humanoid-robot as teaching mediator," *Proc. Comput. Sci.*, vol. 76, pp. 488–493, Jan. 2015. [Online]. Available: <https://www.sciencedirect.com/science/article/pii/S1877050915038235>
- [50] M. J. Salvador, S. Silver, and M. H. Mahoor, "An emotion recognition comparative study of autistic and typically-developing children using the Zeno robot," in *Proc. IEEE Int. Conf. Robot. Autom. (ICRA)*, May 2015, pp. 6128–6133.
- [51] A. A. Aziz, M. Mokhsin, F. F. M. Moganan, A. Ismail, N. Sakamat, A. S. Zainol, and A. M. Lokman, "Humanoid-robot as teaching mediator: Research model in demonstrating the autistic children learning motivation based on the emotional responses," *Adv. Sci. Lett.*, vol. 24, no. 4, pp. 2296–2300, Apr. 2018.
- [52] J. Li, D. Davison, A. Alcorn, A. Williams, S. B. Dimitrijevic, S. Petrovic, P. Chevalier, B. Schadenberg, E. Ainger, L. Pellicano, and V. Evers, "Non-participatory user-centered design of accessible teacher-teleoperated robot and tablets for minimally verbal autistic children," in *Proc. 13th ACM Int. Conf. Pervasive Technol. Rel. Assistive Environ.*, Jun. 2020, pp. 1–9, doi: 10.1145/3389189.3393738.
- [53] J. Bharatharaj, L. Huang, R. Mohan, A. Al-Jumaily, and C. Krägeloh, "Robot-assisted therapy for learning and social interaction of children with autism spectrum disorder," *Robotics*, vol. 6, no. 1, p. 4, Mar. 2017.
- [54] G. Palestra, G. Varni, M. Chetouani, and F. Esposito, "A multimodal and multilevel system for robotics treatment of autism in children," in *Proc. Int. Workshop Social Learn. Multimodal Interact. Designing Artif. Agents (DAA)*, 2016, pp. 1–6, doi: 10.1145/3005338.3005341.
- [55] N. A. Malik, S. Shamsuddin, H. Yusoff, M. A. Miskam, and A. C. Hamid, "Feasibility of using a humanoid robot to elicit communicational response in children with mild autism," *IOP Conf. Ser., Mater. Sci. Eng.*, vol. 53, Dec. 2013, Art. no. 012077.
- [56] E. Billing, T. Belpaeme, H. Cai, H.-L. Cao, A. Ciocan, C. Costescu, D. David, R. Homewood, D. Hernandez Garcia, P. Gómez Esteban, H. Liu, V. Nair, S. Matu, A. Mazel, M. Selescu, E. Senft, S. Thill, B. Vanderborght, D. Vernon, and T. Ziemke, "The dream dataset: Supporting a data-driven study of autism spectrum disorder and robot enhanced therapy," *PLoS ONE*, vol. 15, no. 8, pp. 1–15, Aug. 2020, doi: 10.1371/journal.pone.0236939.
- [57] S. Costa, F. Soares, A. P. Pereira, C. Santos, and A. Hiolle, "Building a game scenario to encourage children with autism to recognize and label emotions using a humanoid robot," in *Proc. 23rd IEEE Int. Symp. Robot Hum. Interact. Commun.*, Aug. 2014, pp. 820–825.
- [58] H. Wang, P.-Y. Hsiao, and B.-C. Min, "Examine the potential of robots to teach autistic children emotional concepts: A preliminary study," in *Proc. Int. Conf. Social Robot. USA*: Springer, 2016, pp. 571–580.
- [59] B. Scassellati, M. Matarić, and H. Admoni, "Robots for use in autism research," *Annu. Rev. Biomed. Eng.*, vol. 14, nos. 3–4, pp. 275–294, 2012.
- [60] D. Mazzei, L. Billeci, A. Armato, N. Lazzari, A. Cisternino, G. Pioggia, R. Iglizios, F. Muratori, A. Ahluwalia, and D. D. Rossi, "The face of autism," in *Proc. 19th Int. Symp. Robot Hum. Interact. Commun.*, Sep. 2010, pp. 791–796.
- [61] C. A. Pop, R. Simut, S. Pinteau, J. Saldien, A. Rusu, D. David, J. Vanderfaillie, D. Lefeber, and B. Vanderborght, "Can the social robot probo help children with autism to identify situation-based emotions? A series of single case experiments," *Int. J. Humanoid Robot.*, vol. 10, no. 3, Sep. 2013, Art. no. 1350025.
- [62] B. Vanderborght, R. Simut, J. Saldien, C. A. Pop, A. S. Rusu, S. Pinteau, D. Lefeber, and D. O. David, "Using the social robot probo as a social story telling agent for children with ASD," *Interact. Stud.*, vol. 13, no. 3, pp. 348–372, Dec. 2012.
- [63] L. Dickstein-Fischer and G. S. Fischer, "Combining psychological and engineering approaches to utilizing social robots with children with autism," in *Proc. 36th Annu. Int. Conf. IEEE Eng. Med. Biol. Soc.*, Aug. 2014, pp. 792–795.
- [64] S. Silva, F. Soares, S. Costa, A. P. Pereira, and F. Moreira, "Development of skills in children with ASD using a robotic platform," in *Proc. IEEE 2nd Portuguese Meeting Bioeng. (ENBENG)*, Feb. 2012, pp. 1–4.
- [65] F. Michaud and S. Caron, "Roball, the rolling robot," *Auto. Robots*, vol. 12, no. 2, pp. 211–222, 2002.
- [66] C. H. Park, N. Pai, J. Bakthavatchalam, Y. Li, M. Jeon, and A. Howard, "Robotic framework for music-based emotional and social engagement with children with autism," in *Proc. AAAI Workshop, Artif. Intell. Appl. Assistive Technol. Smart Environ.*, 2015, pp. 39–40.



**KATRIN D. BARTL-POKORNY** received the M.Phil. degree in applied linguistics from the University of Graz, Austria, in 2010, and the Ph.D. degree in medical science from the Medical University of Graz, Austria, in 2019. From 2010 to 2014, she was a Research Assistant with the Institute of Physiology, Medical University of Graz. Since 2014, she has been a Senior Lecturer with the Research Unit iDN—interdisciplinary Developmental Neuroscience, Division of Phoniatrics, Medical University of Graz. Since 2020, she has also been a Postdoctoral Researcher with the Chair of Embedded Intelligence for Health Care and Wellbeing, University of Augsburg, Germany. She has (co)authored three book chapters and 42 articles. Her research interests include digital health and speech-language and socio-communicative abilities of typically developing children and children with developmental disorders, foremost autism spectrum disorder, Rett syndrome, and fragile X syndrome. She received the 64th Lindau Nobel Laureate Meeting Participation and Travel Award in 2014 and the COST Enhancing the Scientific Study of Early Autism (ESSEA) Travel Grant in 2014. She is currently an Associate Editor of the journal *Frontiers in Digital Health*.



**MAŁGORZATA PYKAŁA** received the M.Sc. degree in informatics from the Gdansk University of Technology, Poland, in 2019. Since 2019, she has been working as a Teaching and Research Assistant with the Department of Software Engineering, Faculty of Electronics, Telecommunications and Informatics, Gdansk University of Technology. She is also a member of a Project EMBOA Affective loop in Socially Assistive Robotics as an intervention tool for children with autism. Her research interests include accessibility, usability, and affective computing.



**PINAR ULUER** received the B.Sc. and M.Sc. degrees in computer engineering from Galatasaray University, Istanbul, Turkey. She is currently pursuing the Ph.D. degree in mechatronics engineering with Istanbul Technical University, Turkey. She is also a Research Assistant with Galatasaray University, where she is working as a Teaching and Research Assistant with the Computer Engineering Department. She has been a member of the Cognitive and Social Robotics (CSR) Laboratory, Istanbul Technical University, since 2013. Her research interests include human–robot interaction, socially assistive robotics, and affective computing.



**DUYGUN EROL BARKANA** is currently a Professor with Yeditepe University, Istanbul, Turkey, and the Director of the Robotics Research Laboratory. She is working on robot-assisted rehabilitation systems, social assistive robots, human–robot interaction, and affective computing. Her research, supported by the European Union, and the Scientific and Research Council of Turkey, has culminated in many publications. She has been honored with the Career Award by the Scientific and Technological Research Council of Turkey in 2009, the Outstanding Young Scientists Awards by the Turkish Academy of Sciences in 2018, and the Research Incentive Award by the Middle East Technical University Professor Mustafa Parlar Research and Education Foundation, in 2019. She is a part of several national and international projects, including the project EMBOA Affective loop in Socially Assistive Robotics as an intervention tool for children with autism.



**BEN ROBINS** received the Ph.D. degree from the School of Computer Science, University of Hertfordshire, U.K., focusing on assistive technology for children with autism, bringing together his expertise and experience in these two disciplines. He is currently a Senior Research Fellow with the School of Computer Science, University of Hertfordshire. His qualifications and many years of work experience lie in two disciplines, computer science and dance movement therapy. His research, which started in 2002 in the AURORA Project and continued in the FP6, FP7, and H2020 European projects IROMECE, ROBOSKIN, and Baby-Robot, respectively, investigates the potential use of robots as therapeutic or educational tools, encouraging basic communication, and social interaction skills in children with autism. His current work, part of the Erasmus+ projects SMART and EMBOA, and UH's KASPAR Project, is further investigating robot-assisted therapy and continues the development of the KASPAR robot as a therapeutic and educational tool (<http://kaspar.herts.ac.uk>). This includes running long term studies with KASPAR and children with autism in families' homes and in collaboration with schools and medical centers internationally.



**ALICE BAIRD** received the Ph.D. degree from the University of Augsburg, under the supervision of Prof. Björn Schuller. She is also an Audio Researcher with interdisciplinary expertise in machine learning, computational paralinguistics, stress, and emotional well-being. Her work on emotion understanding from auditory, physiological, and multimodal data has been published extensively in the leading journals and conferences in her field, including Interspeech, ICASSP, IEEE

INTELLIGENT SYSTEMS, and the IEEE JOURNAL OF BIOMEDICAL AND HEALTH INFORMATICS.

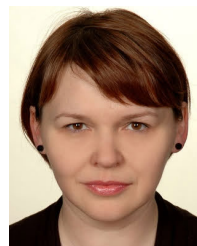


**BJÖRN W. SCHULLER** (Fellow, IEEE) received the Diploma, Doctoral, and Habilitation degrees in machine intelligence and signal processing from TUM, Munich, Germany. He was an Adjunct Teaching Professor with TUM. He is currently a Full Professor and the Chair of the Embedded Intelligence for Health Care and Wellbeing, University of Augsburg, Germany; a Full Professor of artificial intelligence; the Head of GLAM, Imperial College London, U.K., and the co-founding CEO and the current CSO of audEERING, an audio intelligence company based near Munich and in Berlin, Germany. He has (co)authored more than 1,000 publications (more than 40 k citations and H-index = 91). He is the Golden Core Awardee of the IEEE Computer Society, a fellow of BCS and ISCA, a fellow and the President-Emeritus of AAAC, and a Senior Member of ACM. His more than 30 awards include having been honored as one of 40 extraordinary scientists under the age of 40 by WEF in 2015. He is the Field Chief Editor of *Frontiers in Digital Health* and was the Editor-in-Chief of the IEEE TRANSACTIONS ON AFFECTIVE COMPUTING. He served as a coordinator/PI in more than 15 European projects, and is an ERC Starting and DFG Reinhart-Koselleck Grantee and a Consultant of companies, such as Barclays, GN, Huawei, Informetis, or Samsung.



**HATICE KOSE** (Senior Member, IEEE) is currently a Professor with Istanbul Technical University, Turkey, coordinating the Cognitive Social Robotics Research Group and the Game and Interaction Technologies Laboratory (GAMELab). She is working on social assistive robots, human–robot interaction, affective computing, and gamification, mostly in the domain of education, therapy, and treatment of children with disabilities. She is a part of several national and international projects

in this field, including the FP6 Project Robotcub, the RISE Project Welding of E-Textiles for Interactive Clothing (Etextweld), the LUDI COST Action Play For Children With Disabilities, and the Erasmus+ Project EMBOA Affective loop in Socially Assistive Robotics as an intervention tool for children with autism.



**AGNIESZKA LANDOWSKA** is currently an Associate Professor with the Gdansk University of Technology, Poland. She is also a Leader of the Emotions in the Human–Computer Interactions Group (EMORG). She leads a project that develops mobile applications dedicated to autism therapy (friendly apps). She supervised research in project AFFITS (Methods and tools for affect-aware intelligent tutoring systems) and AUTMON (Automated therapy monitoring for children with autism spectrum disorder), and took part in UE COST LUDI (Play for children with disabilities) and SHELD-ON (Smart habitat for the elderly) projects. She is the Manager of the project EMBOA Affective loop in Socially Assistive Robotics as an intervention tool for children with autism. Her research is focused on making the technology more humane, including topics of human–computer and human–robot interaction, accessibility and adoption of technology, user experience, and affective computing.



**TATJANA ZORCEC** is currently a Professor with the Medical Faculty and an Employee of the University Children's Hospital, Skopje, Macedonia. She has expertise in diagnostics and treatment of children with autism and is appointed as a National Coordinator for autism. She has participated in many national and international scientific projects.

...