



Article

Towards Designing an Innovative Industrial Fan: Developing Regression and Neural Models Based on Remote Mass Measurements

Jacek Czyżewicz ¹, Piotr Jaskólski ², Paweł Ziemiański ^{3,*} , Marian Piwowarski ¹ , Mateusz Bortkiewicz ², Krzysztof Laszuk ², Ireneusz Galara ², Marta Pawłowska ² and Karol Cybulski ²

¹ Faculty of Mechanical Engineering and Ship Technology, Gdańsk University of Technology, ul. Gabriela Narutowicza 11/12, 80-233 Gdańsk, Poland; jacek.czyzewicz@pg.edu.pl (J.C.); marian.piwowarski@pg.edu.pl (M.P.)

² Nyborg-Mawent S.A., ul. Ciepła 6, 82-200 Malbork, Poland; pjaskolski@nyborg-mawent.com (P.J.); mbortkiewicz@nyborg-mawent.com (M.B.); klaszuk@nyborg-mawent.com (K.L.); igalara@nyborg-mawent.com (I.G.); mpawlowska@nyborg-mawent.com (M.P.); kcybulski@nyborg-mawent.com (K.C.)

³ Faculty of Management and Economics, Gdańsk University of Technology, ul. Gabriela Narutowicza 11/12, 80-233 Gdańsk, Poland

* Correspondence: pawel.ziemianski@pg.edu.pl

Abstract: This article presents the process of the construction and testing a remote, fully autonomous system for measuring the operational parameters of fans. The measurement results obtained made it possible to create and verify mathematical models using linear regression and neural networks. The process was implemented as part of the first stage of an innovative project. The article presents detailed steps of constructing a system to collect and process measurement data from fans installed in actual operating conditions and the results of analysis of this data. In particular, a measurement infrastructure was developed, defined, and implemented. Measuring equipment was mounted on selected ventilation systems with relevant fans. Systems were implemented that allowed continuous measurement of ventilation system parameters and remote transmission of data to a server where it was regularly analysed and selected for use in the process of modelling and diagnostics. Pearson's correlation analysis for $p < 0.05$ indicated that all seven parameters (suction temperature, discharge temperature, suction pressure, current consumption, rotational speed, humidity, and flow) were significantly correlated with efficiency ($p < 0.001$). A satisfactory level of correlation between the selected parameters measured in actual conditions and the characteristics of the fan and the ventilation system was experimentally verified. This was determined by finding 4 statistically significant parameters at a confidence level of 95%. This allowed the creation of two mathematical models of the fan system and the ventilation system using linear regression and neural networks. The linear regression model showed that the suction temperature, discharge temperature, and air humidity did not affect the fan efficiency (they are statistically insignificant, $p > 0.05$). The neural model, which considered all measured parameters, achieved the same accuracy as the model based on four significant parameters: suction pressure, current consumption, rotational speed, and flow.

Keywords: fans; measurements; remote measurement and diagnostic systems; fan characteristics; linear regression; neural networks; managing innovative project; entrepreneurial organisation



Citation: Czyżewicz, J.; Jaskólski, P.; Ziemiański, P.; Piwowarski, M.; Bortkiewicz, M.; Laszuk, K.; Galara, I.; Pawłowska, M.; Cybulski, K. Towards Designing an Innovative Industrial Fan: Developing Regression and Neural Models Based on Remote Mass Measurements. *Energies* **2022**, *15*, 2425. <https://doi.org/10.3390/en15072425>

Academic Editor: Fabio Polonara

Received: 25 February 2022

Accepted: 21 March 2022

Published: 25 March 2022

Publisher's Note: MDPI stays neutral with regard to jurisdictional claims in published maps and institutional affiliations.



Copyright: © 2022 by the authors. Licensee MDPI, Basel, Switzerland. This article is an open access article distributed under the terms and conditions of the Creative Commons Attribution (CC BY) license (<https://creativecommons.org/licenses/by/4.0/>).

1. Introduction

Companies operating in today's business reality must deal with high pressure resulting from frequent technological changes, emerging disruptive changes, and the necessity to improve the products and services they offer to meet, on the one hand, customer needs and on the other, the requirements and policies of regulators [1]. Adapting to rapidly and significantly changing conditions requires strategic thinking, which includes recognizing

megatrends, which are defined as major social, economic, political, and technological changes that form slowly and affect people over an extended period [2]. In the literature, the term entrepreneurial orientation is used to describe a company's approach to strategy creation and implementation that manifests itself in specific actions that are inherently entrepreneurial [3]. This article describes the activities and results of the first phase of the development project of a new product that can be considered a manifestation of such an orientation. The project aims to develop an industrial fan with a unique design, characterised by a reduced level of noise emission and increased energy efficiency. The initiation and implementation of the project in question are tied to three aspects described as elements of entrepreneurial orientation, namely innovation, risk taking, and proactivity [4].

The first element refers to creativity, the tendency to experiment as well as tolerance and desire to promote innovative ideas [5]. The basic assumption of the project itself and its activities is the belief that innovative design changes can be made. Moreover, these changes are expected to lead to the creation of a product that will be more energy efficient. The process of its development is based on advanced methods, including the use of artificial neural networks and numerical modelling to optimise fan parameters. The second element, i.e., risk taking, refers to activities that involve uncertainty about the final outcome but whose success involves significant benefits [6]. The described project has just such characteristics. The last element of entrepreneurial orientation, also representing an aspect of project activities, is proactivity, which refers to taking the initiative to gain a competitive advantage [7]. The level of fan parameters assumed in this project will be very competitive globally.

The article consists of the following parts. The first part describes the types of fans. In addition, it discusses the currently prevailing approach to their design, which results in frequent oversizing of the equipment and, at the same time, provides the opportunity for significant optimisations if an innovative approach is taken at the stage of finding solutions. The next part of the article describes the assumptions and the course of activities performed at the first stage of the innovative research and development project in question. The next element of the article is a description of the process of creating a mathematical model containing significant parameters that affect the efficiency of a fan in a given ventilation system. A summary and conclusions are shown in the final part of the article.

Types of Fans, Prevailing Design Approach

Fans find a wide range of applications in virtually all areas of human life and are intended for use in a variety of specific locations. They can be classified in a number of ways, e.g., by the installation method (discharge, suction and combination of both), design features, pressure value (low-pressure, high-pressure), number of rotors (single-rotor and multi-rotor), application (transport, smoke extract, explosion-proof) and installation site (mine, sea). Depending on the installation site, it is possible to distinguish e.g., wall, ceiling, or roof fans. Other examples of fan applications include:

- ventilation equipment (room ventilation), foundries, power plants, mines, cinemas, lecture halls, etc.;
- motor and electricity generator cooling;
- internal combustion engine cooling;
- fan cooling towers;
- air condensers in cooling systems;
- draft and blast fans,
- electronic systems for cooling components and many other applications [8–10].

Fans, as a device, are an often underestimated but very important component of larger industrial systems due to the noise they generate, but above all, in terms of electricity consumption. Nearly 80% of the electricity generated is consumed by electric motors, of which about 15% is used by the motors that drive the fans [11]. Fans installed in the U.S. industrial sector consume about 11% of the electricity of all industrial motor drives [12]. On the other hand, in India, ceiling fans alone consume about 9% of all electricity produced [13].



Improving fan efficiency is an essential step towards reducing energy consumption globally. Fans should always be considered as a whole, in combination with the ventilation system, i.e., elements such as: inlet (inlet nozzles, inlet boxes, vane diffusers, filters), outlet (guide wheels, exhaust manifold, silencers), drive (direct, belt, gear) with control and regulation system, heat exchangers, partitions, and proper equipment.

Economic operation and maintenance of a ventilation system require the right approach, not only an analysis of the needs of individual equipment components but also the system as a whole. The system approach makes it possible to analyse not only the inlet to and outlet from the system but also how they interact with each other. Ventilation system designers often focus on the direct requirements for individual elements, neglecting the system as a whole, which affects its individual components. This includes the specification of current operating conditions and parameters, the temporary status of the machine, the collection and analysis of operational data, the development of load cycles, the evaluation of energy consumption in relation to operating conditions, or the continuous monitoring and ongoing optimisation of the system. To ensure adequate reliability of fan operation, system installers design fan systems conservatively and tend to compensate for uncertainties in the design of the process by increasing fan efficiency and pressure [14]. Unfortunately, oversizing fan systems increases their operating costs while reducing the reliability of the fan itself. Due to service requirements, these fans do not work at the best operating points. In extreme cases, they may operate unstably, generating excess flow energy, which results in high levels of air flow noise and increased fan and system load.

While reviewing existing fan solutions and ongoing fan research, one can identify several areas for improvement of gas transport processes using flow fans. These include improving the energy efficiency of the fan itself as a device, together with the drive, introducing measures to reduce the noise generated, and improving gas transport efficiency within the ventilation system. The most significant opportunities lie in providing solutions for the ventilation system, selecting the right fan for it, and then in the fan itself, its drive system, and the adjustment method. All the mentioned measures are interrelated and directly influence each other.

Choosing a fan is a complex process that starts with knowing the basic operating requirements of the system and the operating conditions, such as airflow rate, temperature, pressure, airflow properties, and ventilation system structure. The variability of these factors and other considerations, such as cost, efficiency, service life, maintenance, speed, type of material, spatial limitations, drive systems, temperature, and range of operating conditions makes fan selection very complicated. However, factors that bring reduction of energy consumption when modernising or expanding a system can be very helpful in the process of fan selection. Often a given type of fan is chosen for non-technical reasons, such as price, delivery conditions, availability, designer, operator, or familiarity with the fan model. As a result, the noise level, energy costs, maintenance requirements, system reliability, or fan efficiency can be worse than expected. Fans are usually selected from a range of models and sizes rather than designed specifically for a particular application. Fan selection is based on calculating the requirements for gas flow and pressure in the ventilation system. Unfortunately, there is a high level of uncertainty associated with predicting gas flow resistance in the system. This uncertainty, combined with the effects of contamination and anticipated changes in system resistance, forces the introduction of efficiency and pressure reserves beyond the potentially nominal state. The problems and costs associated with poor fan choice can be eliminated in the future through the adequate collection of data that will constitute feedback from the operation [15].

By determining the relationship between the practical conditions and the characteristics of the fans and the ventilation system themselves, and by knowing the significance of the influence of individual system components, we can substantially influence the process of designing and selecting a fan. For this reason, before starting research work on the design of a high-efficiency and thus low-noise fan, it is necessary to have a mathematical

model of its operation within the system, verified numerically and experimentally in actual operating conditions.

In the subject literature, the authors have not found comprehensive solutions for a remote, fully autonomous system for measuring the operational parameters of fans. There are attempts to build a digital model of interconnected ventilation networks and the possibility of using the development of a ventilation network for prospective calculations [16]. It is possible to encounter control and diagnostic systems that provide only current control of fan station parameters and signalling of emergency conditions [17,18]. It is also possible to find a system for monitoring the operation of master ventilation mining fans, including control systems for fan drives and dampers, and a fan operation supervision system, whose task is to monitor and visualise the operation of the fans [19]. There are also analytical methods for creating a system for optimal control of the operation of a simple ventilation system that uses measurement data [20]. For fans, there also exists a diagnostic system that prevents failures by using vibration measurement and a predictive model that uses neural networks. However, this only applies to protection against failures [21].

As part of building a remote system for measuring the operational parameters of fans in actual conditions, a selection of points and parameters measured at selected locations was made to collect mass data. This selection was intended to ensure adequate repeatability and relevance of the measurements. The selection of data was made in the form of a time series (daily characteristics with a sampling frequency of 1 Hz) for future algorithm training, sample description, and selection and extraction of attributes. A mathematical model was then created using linear regression and neural networks to evaluate the condition of a given fan in a specific installation configuration on the basis of selected measurement parameters.

The innovativeness of the current approach lies in its comprehensiveness. Installing a number of sensors determined the fans' characteristics and began identifying significant parameters. Based on this data, models were built that will be further used in the fan design process. They are likely to be an efficient tool for generating and verifying ideas for the modernization of fans and fan systems after further development. As was previously highlighted, the authors did not find such comprehensive solutions in the literature. There are only solutions with limited functionality that include, e.g., diagnostic systems to prevent breakdowns and signal emergency states. It might be possible to maintain satisfactory model accuracy while reducing the number of measuring devices (suction or discharge pressure, current consumption, rotational speed, and flow). In particular, eliminating the need to measure flow, the sensors of which are most expensive, would be beneficial. We believe that there is a novelty in the approach described in the present paper.

2. Description of the Conducted Research

As part of the project activities, a selection of centrifugal fans operating in actual conditions produced by Nyborg–Mawent was made. The selection was guided by several criteria, including fan type, fan operating conditions, and the availability of local internet infrastructure. One of the main criteria was the strategic importance of a given fan in the Nyborg–Mawent offer. This is because it was crucial to concentrate the works and research on those fans that are purchased and installed most frequently. Their potential modification and increased efficiency would be the most beneficial to the manufacturer, its customers, and the wider environment. For the measurements, representative centrifugal fan designs were selected from among Nyborg–Mawent's ZWP, ZWWOax, ZWPSe, and WPSS types working in actual operating conditions to analyse their operational parameters at the installation site in comparison to the design assumptions.

In the course of site inspections and installation, the team encountered a problem with power, which had to be supplied to the measurement set. For some fans, this was difficult due to the distance between the fan and the power source. This problem was successfully solved by designing an original, innovative device that enables obtaining power directly from the inverter of a fan. The experiments performed in laboratory conditions made it possible to create a unique power supply solution, thanks to which electrical energy with

the right parameters can be supplied with sufficiently good accuracy to all measurement sensors. It is currently the subject of a patent clearance study.

Further activities included defining the essential measurement equipment, namely sensors of pressure, temperature, flow, humidity, electrical, and electronic components to take remote mass measurements. This was necessary to perform the measurements correctly, i.e., to precisely determine the physical quantities measured and the method of measuring them. To this end, a technical specification was developed for each of the measurement elements according to the assumed requirements of the dataset.

The selection, arrangement, and installation of temperature, pressure, current consumption, rotational speed, humidity, and flow velocity sensors were planned and made in accordance with the EN-ISO-5802: 2008E-1 standard. (Industrial fans—performance testing in situ) [22]. It was similar for each measured fan; however, it was conditioned by the assembly possibilities.

Due to the various operating conditions of the fans in the ventilation systems (weather conditions, high dust concentration, vibrations, lack of local internet infrastructure), the equipment used required an individual approach. For this purpose, technical solutions were developed for this equipment that allowed the collection of measurements of current operating parameters, their acquisition, and subsequent transmission to the server (Figure 1). The measuring equipment, installed on selected devices with different power, purpose, operating at low or high temperatures (around 200 °C), was verified for correct operation [23].

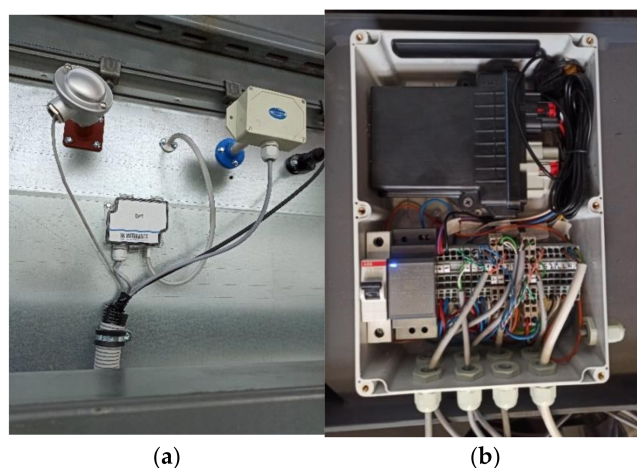


Figure 1. Several installed measuring sensors (a) and an electrical connection box with measuring signals and a modem for data transmission to the server (b).

Thanks to this solution, data could be collected from enough fans and, in subsequent stages, used to construct mathematical models. The sensor data previously uploaded to the server was verified, i.e., its accuracy was analysed by comparing the current operating points against the characteristics of the respective fan types [24]. The following is the methodology for converting the data from measurement sensors (formulae 1 to 13), which is verified, archived, and collected on the server [9].

Absolute pressure:

$$P = P_b \pm p_{1,2} \quad (1)$$

where:

P_b —atmospheric pressure (Pa),

p_1 —suction gauge pressure (‘−’ sign) (Pa),

p_2 —discharge gauge pressure (‘+’ sign) (Pa).

Air density:

$$\rho = \frac{P_{st}}{R \cdot T} \quad (2)$$



where:

P_{st} —static absolute pressure of the mixture (Pa),

T —absolute temperature of the mixture (K),

R —gas constant of the mixture (kJ/kgK) determined using an empirical formula:

$$R = 0.462 \cdot \frac{0.622 + x}{1 + x} \quad (3)$$

where x is the moisture content calculated according to the formula:

$$x = \frac{0.622 \cdot \phi \cdot P_S}{P_{st} - \phi \cdot P_S} \quad (4)$$

and where:

ϕ —measured relative humidity (—),

P_S —water vapour saturation pressure for a given temperature (Pa),

P_{st} —static absolute pressure of the mixture (Pa).

Volumetric efficiency:

$$V = A \cdot w \quad (5)$$

where:

A —cross-sectional area of the suction or discharge pipeline (m²),

w —measured average medium velocity in the suction or pressure pipeline (m/s).

Mass efficiency:

$$m = V \cdot \rho \quad (6)$$

where:

V —volumetric efficiency (m³/s),

ρ —medium density (kg/m³).

Static pressure increase:

$$\Delta P_{st} = P_2 - P_1 \quad (7)$$

where:

P_1 —absolute pressure in the suction pipeline (Pa),

P_2 —absolute pressure in the discharge pipeline (Pa).

Dynamic pressure increase:

$$\Delta P_d = P_{d2} - P_{d1} = \frac{\rho_2 \cdot w_2^2}{2} - \frac{\rho_1 \cdot w_1^2}{2} \quad (8)$$

where:

P_{d1} —dynamic pressure in the suction pipeline (Pa),

P_{d2} —dynamic pressure in the discharge pipeline (Pa),

w_1 —average gas velocity in the suction pipeline (m/s),

w_2 —average gas velocity in the discharge pipeline (m/s),

ρ_1 —gas density in the suction pipeline (kg/m³),

ρ_2 —gas density in the discharge pipeline (kg/m³).

Total pressure increase:

$$\Delta P_C = \Delta P_{st} + \Delta P_d \quad (9)$$

Effective power:

$$N_u = V \cdot \Delta P_C \quad (10)$$

where:

V —volumetric efficiency (m³/s),

ΔP_C —total pressure increase (Pa).

Unit efficiency:

$$\eta_z = \frac{N_u}{N_{el}} \quad (11)$$



where:

N_{it} —effective power (W),

N_{el} —electrical power input (W), determined using the formula:

$$N_{el} = \sqrt{3} \cdot U \cdot I \cdot \cos(\varphi) \quad (12)$$

where:

I —measured current intensity value (A),

$\cos(\varphi)$ —for modern asynchronous motors can be estimated at ~ 0.85 ,

U —current voltage (V) determined based on rotational frequency (f) from the relationship:

$$U = \frac{f}{50} \cdot 400 \quad (13)$$

The calculated and analysed data is compared to the current operating points against the characteristics of the respective fan types. This was followed by continuous measurements, ongoing analysis of the collected data, and selection of data for use in the process of modelling and model verification. Several measurement points collected between June and November 2021 determined using the above calculation methodology are presented below against the background of the characteristics of an exemplary 20,093 fan (Figure 2). The sample measurement results presented against the characteristic of the fan clearly show that in this case, the fan was selected with a large oversizing of the efficiency. The operating points deviate significantly from the optimal efficiency value. Such measurements and the constructed model will make it possible to verify the process of selecting a machine for a given ventilation system, among other things.

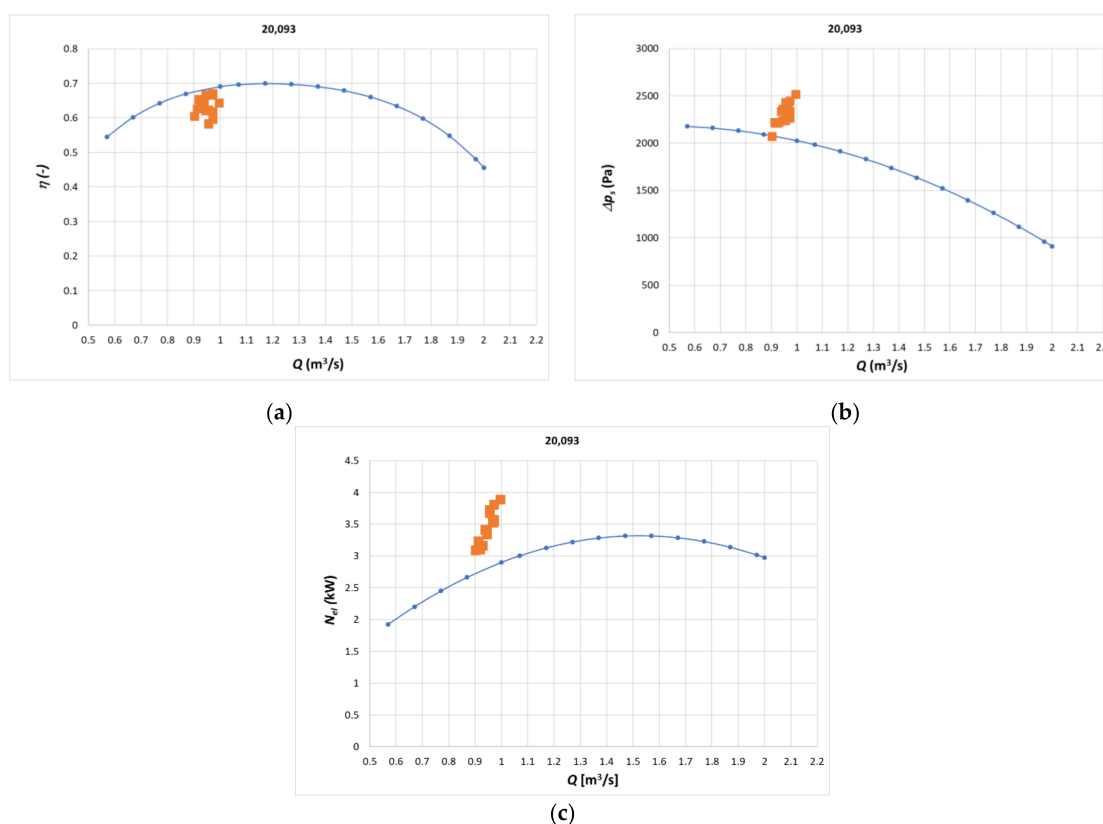


Figure 2. Selected measurement results in the period from June to January 2022 against the background of the characteristics of an exemplary 20,093 fan, where: (a) efficiency η as a function of flow Q , (b) pressure increase Δp_s as a function of flow Q , (c) power N_{el} as a function of flow Q , blue line characteristic, orange points—measurements.

For the purpose of further research analyses, the measurement data is filtered and cleaned of distortions and thus prepared for inclusion in a future mathematical model.

Figure 3 shows examples of measurement points from selected days used for data analysis. The collected measurement data made it possible to select sets to train and verify the model predicting the process of changes in characteristics of the fan and the system in time and to assess the significance of the influence of various design parameters of the fan and the system. The data collected allowed verification of the models built and clarification of the variables required to assess the relevance of those models during long-term operation.

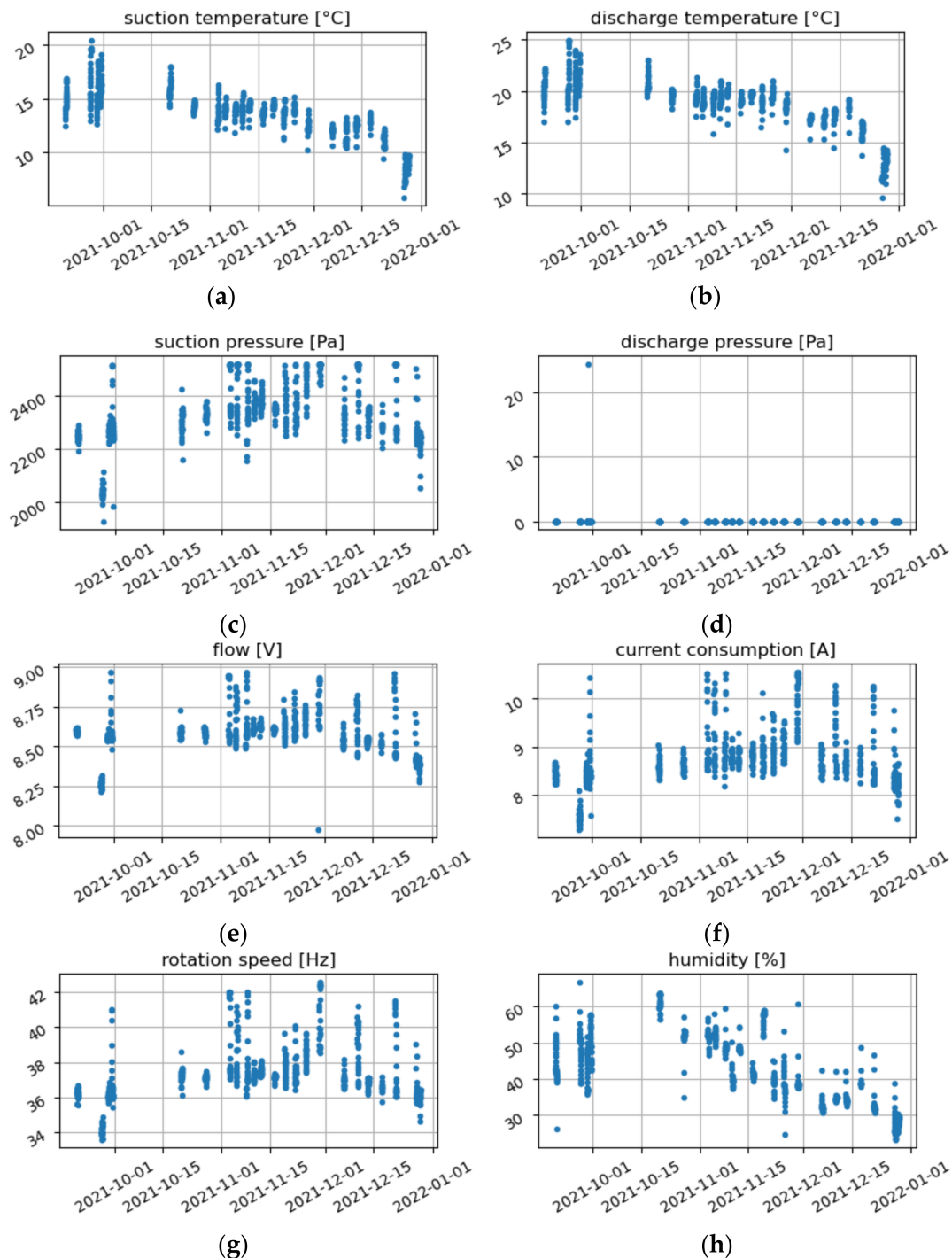


Figure 3. Cont.

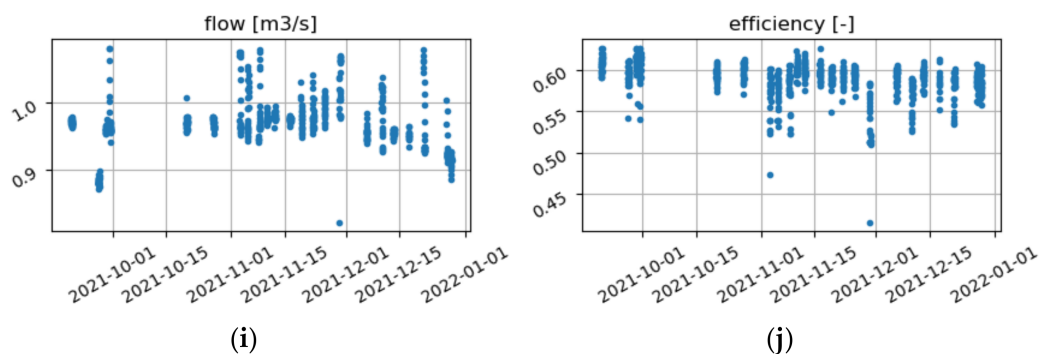


Figure 3. Measurement points from selected days used to develop a mathematical model, where: (a) suction temperature ($^{\circ}\text{C}$), (b) discharge temperature ($^{\circ}\text{C}$), (c) suction pressure (Pa), (d) discharge pressure (Pa), (e) flow (V), (f) current consumption (A), (g) rotation speed (Hz), (h) humidity (%), (i) flow (m^3/s), (j) efficiency (-).

Before the stage of creating the mathematical model, a correlation analysis was performed between the individual measured parameters and the fan efficiency. Pearson's correlation for $p < 0.05$ was considered significant [25]. Pearson's correlation coefficients (r) and their values at the 95% confidence interval are presented in Table 1. " r " takes values from -1 to 1 , where 1 means total positive correlation, 0 means no correlation, and -1 means total negative correlation (the larger the x , the smaller the y). These are correlations that consider the relationships between a single parameter and efficiency without taking into account the interdependencies between parameters, so this stage should be considered a preliminary exploration of the relationships.

Table 1. Correlations (Pearson) between the measured parameters and the fan efficiency.

Parameter	r	CI95%	p	Correlation
Suction Temperature ($^{\circ}\text{C}$)	0.272	(0.23 0.31)	0.000	Very Weak
Discharge Temperature ($^{\circ}\text{C}$)	0.220	(0.18 0.26)	0.000	Very Weak
Suction Pressure (Pa)	-0.362	($-0.40 -0.32$)	0.000	Moderate
Current Consumption (A)	-0.738	($-0.76 -0.72$)	0.000	Very Strong
Rotational Speed (Hz)	-0.583	($-0.61 -0.55$)	0.000	Strong
Humidity (%)	0.077	(0.03 0.12)	0.001	Very Weak
Flow (m^3/s)	-0.349	($-0.39 -0.31$)	0.000	Moderate

Correlation analysis indicated that all seven parameters were significantly correlated with efficiency ($p < 0.001$). However, for humidity and gas temperatures in the suction and discharge ducts, the correlations are very weak: $r = 0.077$, 0.272 and 0.220 , respectively (all below 0.30). Correlations are also noticeable in the graphs of parameter—efficiency (Figure 4). Correlations between measured parameters and efficiency were also analysed (Figure 5), and a very strong correlation was observed between the temperature of the mixture in the suction duct and the temperature of the mixture in the discharge duct ($r = 0.98$). In addition, flow velocity is highly correlated with current consumption ($r = 0.86$), fan rotational speed ($r = 0.90$), and suction duct pressure ($r = 0.88$). Such high correlations suggest that these four parameters can be replaced by one/two parameters in a mathematical model without any apparent decrease in model accuracy.

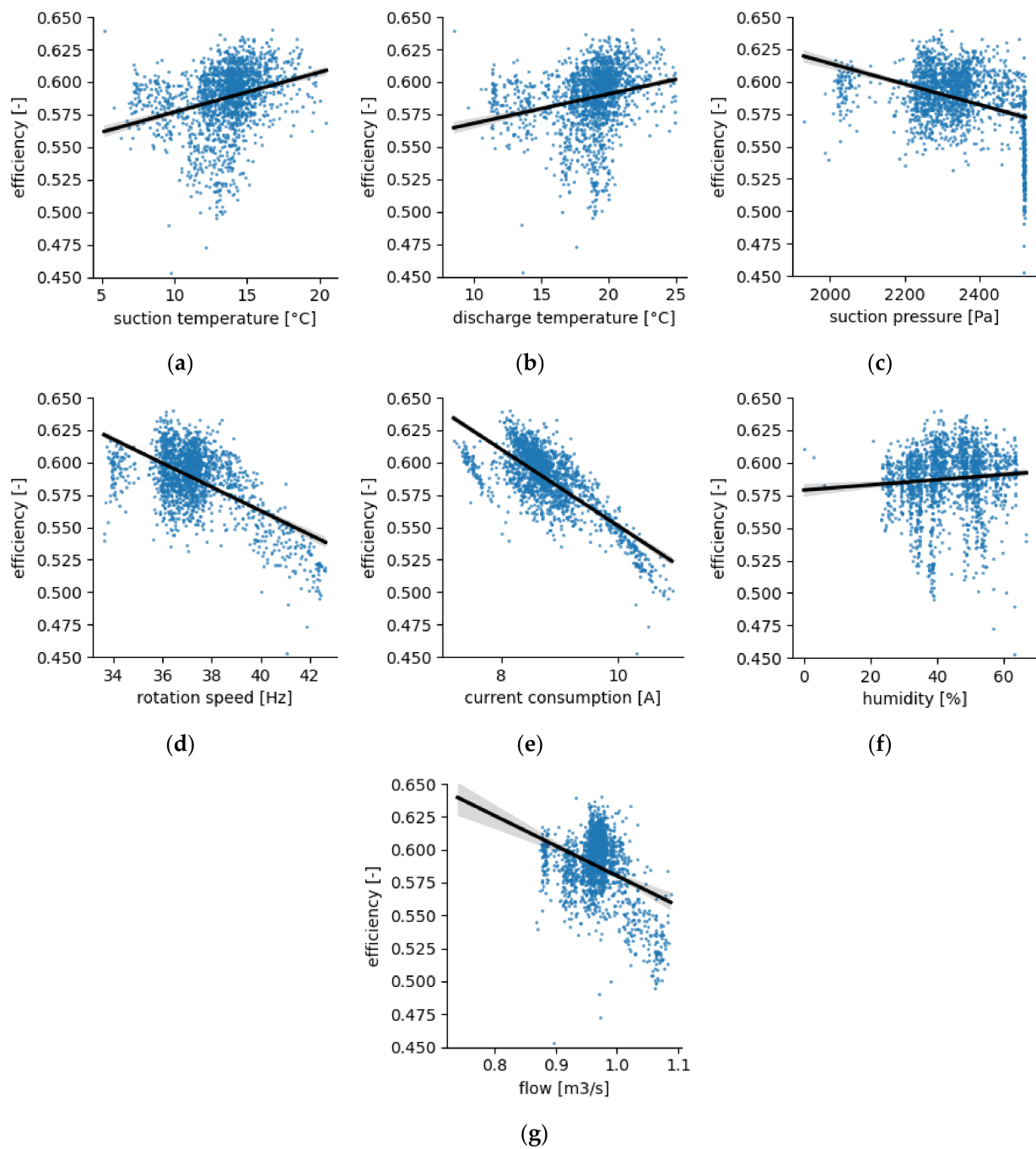


Figure 4. The dependence of the fan efficiency on the measured parameters, where: (a) suction temperature (°C), (b) discharge temperature (°C), (c) suction pressure (Pa), (d) rotational speed (Hz), (e) current consumption (A), (f) humidity (%), (g) flow (m³/s).



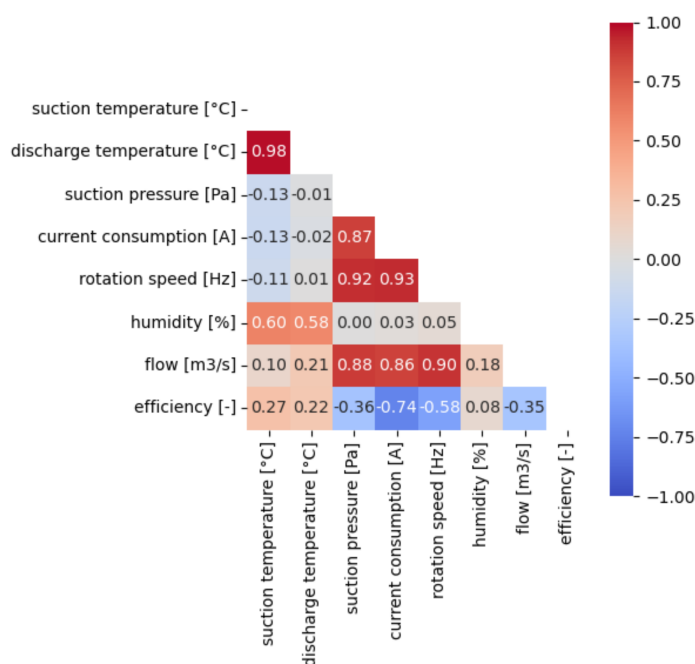


Figure 5. Pearson’s mutual correlations between parameters and efficiency.

One of the models considered was a mathematical model based on linear regression [26], which can be defined with the formula:

$$y = a_1 x_1 + a_2 x_2 + \dots + a_n x_n + b \tag{14}$$

where n is the number of input parameters, x is the input parameter, and y is the fan efficiency. The linear regression model finds statistically significant parameters related to efficiency. The model considers the influence of all parameters simultaneously, making it better than the analysis of individual correlations presented in the previous section [27].

Based on the actual measurement data, the linear regression model was developed. It is presented in Table 2.

Table 2. Correlations (Pearson) between the measured parameters and the fan efficiency.

Parameters	Factor a	Lower Limit a for the Confidence Interval CI (2.5%)	Upper Limit a for the Confidence Interval CI (97.5%)	p	Relevance
b	0.5500	0.5466	0.5534	0.000	-
Suction Temperature (°C)	0.0003	0.0000	0.0006	0.075	insignificant
Discharge Temperature (°C)	-0.0002	-0.0004	0.0001	0.271	insignificant
Suction pressure (Pa)	0.0002	0.0002	0.0002	0.000	$p < 0.001$
Current consumption (A)	-0.0648	-0.0652	-0.0644	0.000	$p < 0.001$
Rotational speed (Hz)	-0.0126	-0.0128	-0.0123	0.000	$p < 0.001$
Humidity (%)	0.0000	0.0000	0.0000	0.192	insignificant
Flow (m ³ /s)	0.5758	0.5684	0.5832	0.000	$p < 0.001$

Based on the mathematical model developed above, it was shown that the temperature of the mixture measured in the suction duct and in the discharge duct, as well as the mixture humidity, had no effect on the fan efficiency (not statistically significant, $p > 0.05$).

Linear regression models predict the target quantity based on linear relationships between the target quantity and one or more predictors. In some cases, statistical modelling techniques provide suitable models very quickly. Even for problems where more flexible machine learning techniques (such as neural networks) may give much better results, some

statistical models can be used as basic predictive models to evaluate the performance of more advanced techniques. In this case, modelling from the field of machine learning was also applied to the analyses. Artificial neural networks have many applications:

- data analysis—allows, for example, the filtering of signals;
- feature extraction—enables the reduction of data size (compression);
- approximation—based on information about the points, the artificial neural network learns the shape of the function (prediction);
- optimisation;
- control systems—based on the given patterns of responses to specific stimuli, the neural network can automatically interpret the situation and respond to it.

In practice, one can find many applications of neural networks, and below are a few selected from the bibliographic review,

- in predicting fans failures [21],
- in forecasting energy consumption [28],
- for the assessment of fuel consumption in an internal combustion engine [29],
- in the assessment of the dynamic condition of turbine stages [30],
- in the analysis of aircraft engines operation [31],
- to evaluate the operation of gas turbines [32].

A machine learning approach to training and testing the model was used to confirm the relevant parameters determined above. This approach involves splitting the data into training data, which is used to calculate the coefficients ‘a’ and ‘b’ in the model, and test data, which allows the model to be tested for error between the predicted values and the actual values in the test set. The basis of this approach is that the model is verified for predictive accuracy for data that was not used to calculate (‘train’/‘teach’) the model. Therefore, the model is trained on training data and verified on test data.

A single split of the training/test data in a ratio of, e.g., 80%/20%, does not guarantee a reliable evaluation of the model; hence, 10-fold cross-validation was used in the conducted analysis. It consists of a 10-fold data split (90/10% ratio). The accuracy of the model is verified 10 times, each time using a different 10% of the parts as a test set (the rest being training data). The mean prediction error (RMSE—root mean square error) was calculated from 10 iterations.

Calculations were carried out for three sets of input parameters:

1. Seven parameters: suction temperature (°C), discharge temperature (°C), suction pressure (Pa), current draw (A), rotational speed (Hz), humidity (%), flow (m³/s);
2. Four parameters: suction pressure (Pa), current consumption (A), speed (Hz), flow (m³/s);
3. Three parameters: suction pressure (Pa), current consumption (A), rotational speed (Hz).

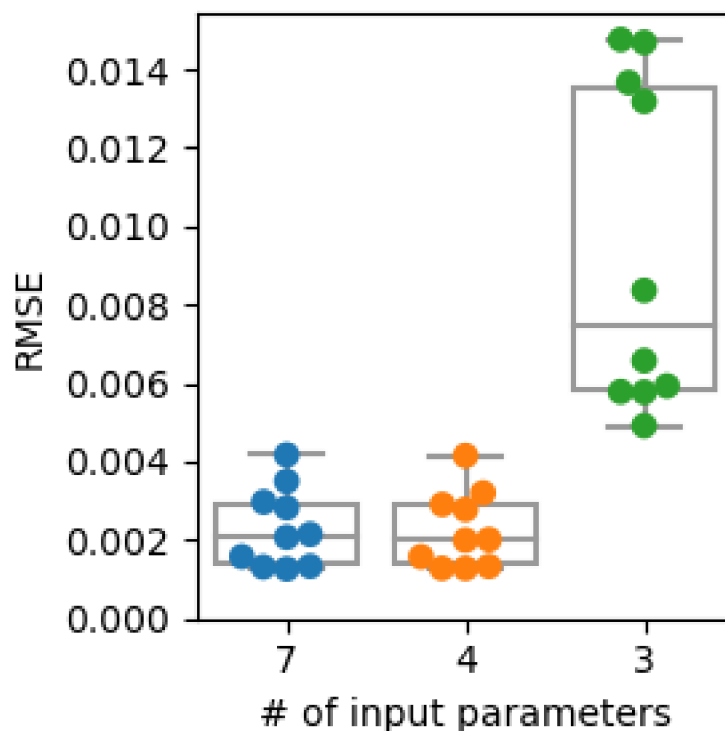
The significance of the parameters was determined by their effect on the accuracy of the mathematical model. If a mathematical model based on a smaller number of input parameters achieves similar accuracy, i.e., there is no statistically significant difference at the 95% confidence level, this means that the omitted input parameters are insignificant for the model. Differences between the models in terms of accuracy were compared using the Mann–Whitney U Test, assuming a significance level of $p < 0.05$ [33].

Table 3 and Figure 6 show the model’s prediction error. There is no significant difference ($p > 0.05$) between the error value for the model with seven parameters and for that with four parameters. Figure 7 shows, in detail, the predicted values depending on the measured ones.

Table 3. The error between the values predicted by the model and those measured for the three models.

Error (RMSE)	Model	Number of Input Parameters		
		7	4	3
Mean (Standard Deviation)	Linear Regression	0.0023 ^a (0.00101)	0.0023 ^a (0.00097)	0.0094 ^b (0.00417)
	Artificial Neural Network	0.0651 ^c (0.02684)	0.0360 ^d (0.01287)	0.0279 ^d (0.01116)

Statistically significant difference between ^a and ^b: $p < 0.001$, ^c and ^d: $p < 0.01$.

**Figure 6.** Error (RMSE) for three linear regression models with different numbers of input parameters.

A model including all measured parameters achieves the same accuracy as a model based on the following four parameters: suction pressure (Pa), current draw (A), rotational speed (Hz), and flow (m^3/s). Failure to include flow velocity in the input parameters results in a significant reduction in model accuracy.

A mathematical model based on an artificial neural network was also developed to analyse the influence of the measured parameters on the fan efficiency, taking into account non-linear relationships and mutual dependencies between the parameters.

As for the linear regression-based model, calculations were performed for three sets of input parameters:

1. Seven parameters: suction temperature ($^{\circ}\text{C}$), discharge temperature ($^{\circ}\text{C}$), suction pressure (Pa), current draw (A), rotational speed (Hz), humidity (%), flow (m^3/s);
2. Four parameters: suction pressure (Pa), current draw (A), rotational speed (Hz), flow (m^3/s);
3. Three parameters: suction pressure (Pa), current draw (A), rotational speed (Hz).

Ten neurons were used in the hidden layer of the neural network. Figure 8 shows the network architectures. Table 3, as well as Figures 9 and 10, show the prediction error.

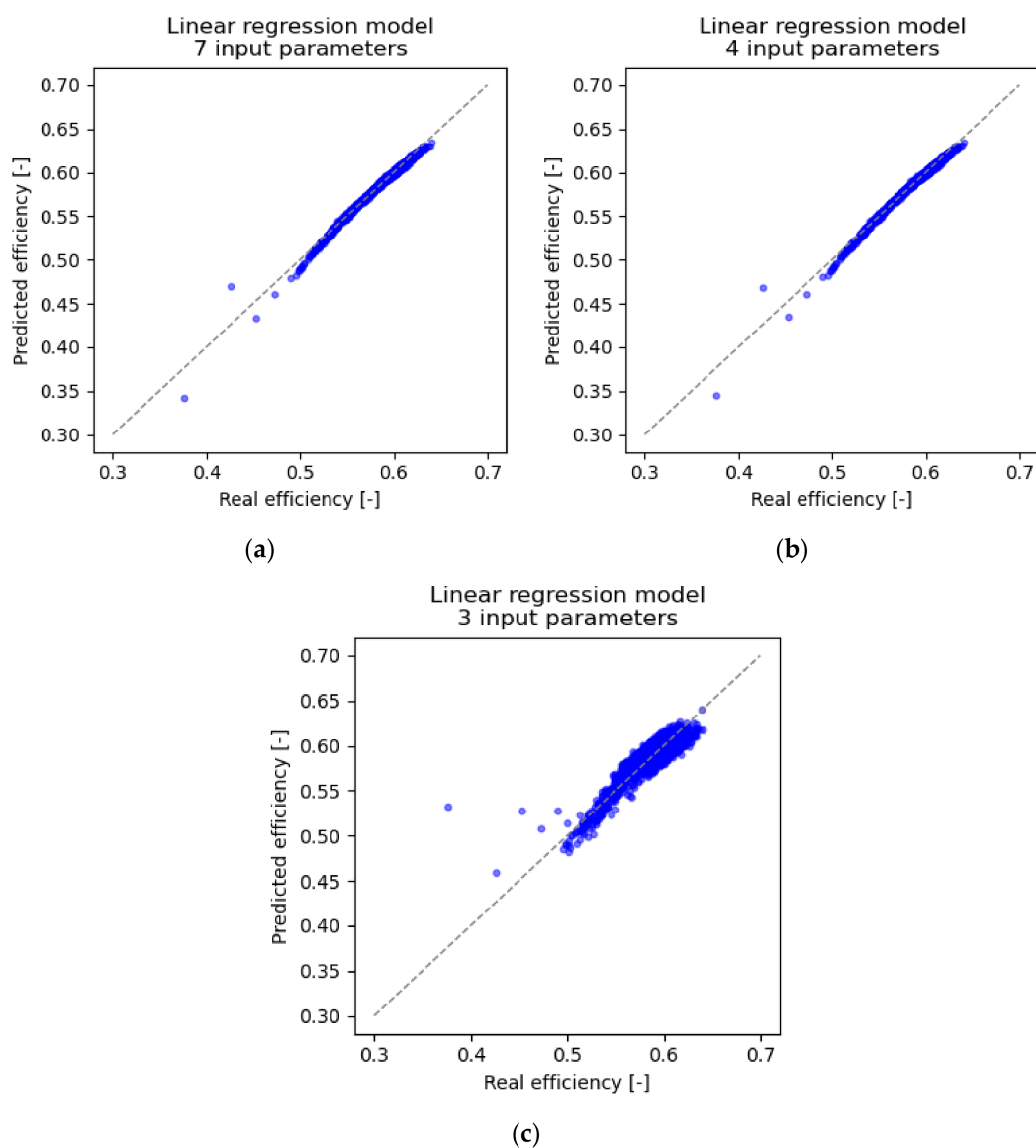


Figure 7. Predicted values as a function of actual values for 3 linear regression models with a decreasing number of input parameters; (a) 7 inputs parameters, (b) 4 inputs parameters, (c) 3 inputs parameters.

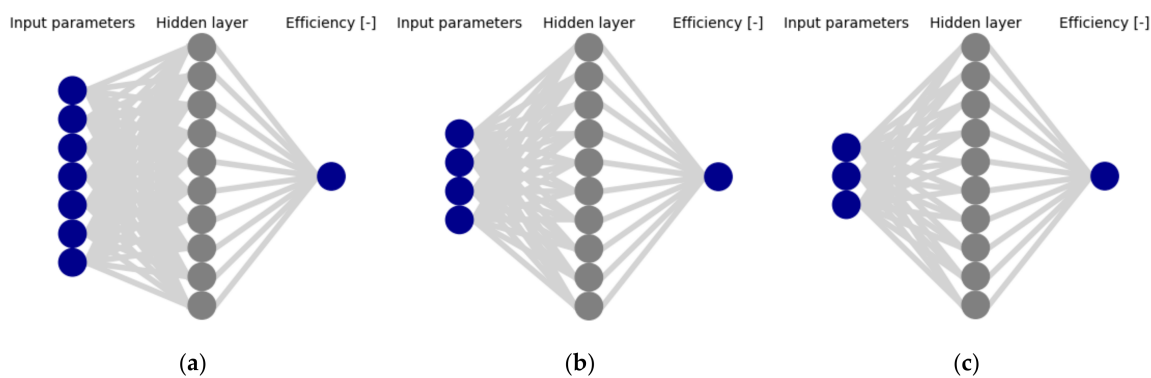


Figure 8. Architecture of the neural network: (a) 7 input parameters; (b) 4 input parameters; (c) 3 input parameters.

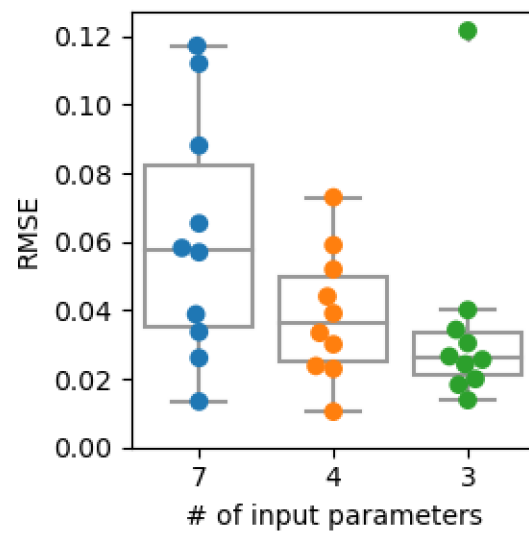


Figure 9. Prediction Error (RMSE) for 3 artificial neural network models with different numbers of input parameters.

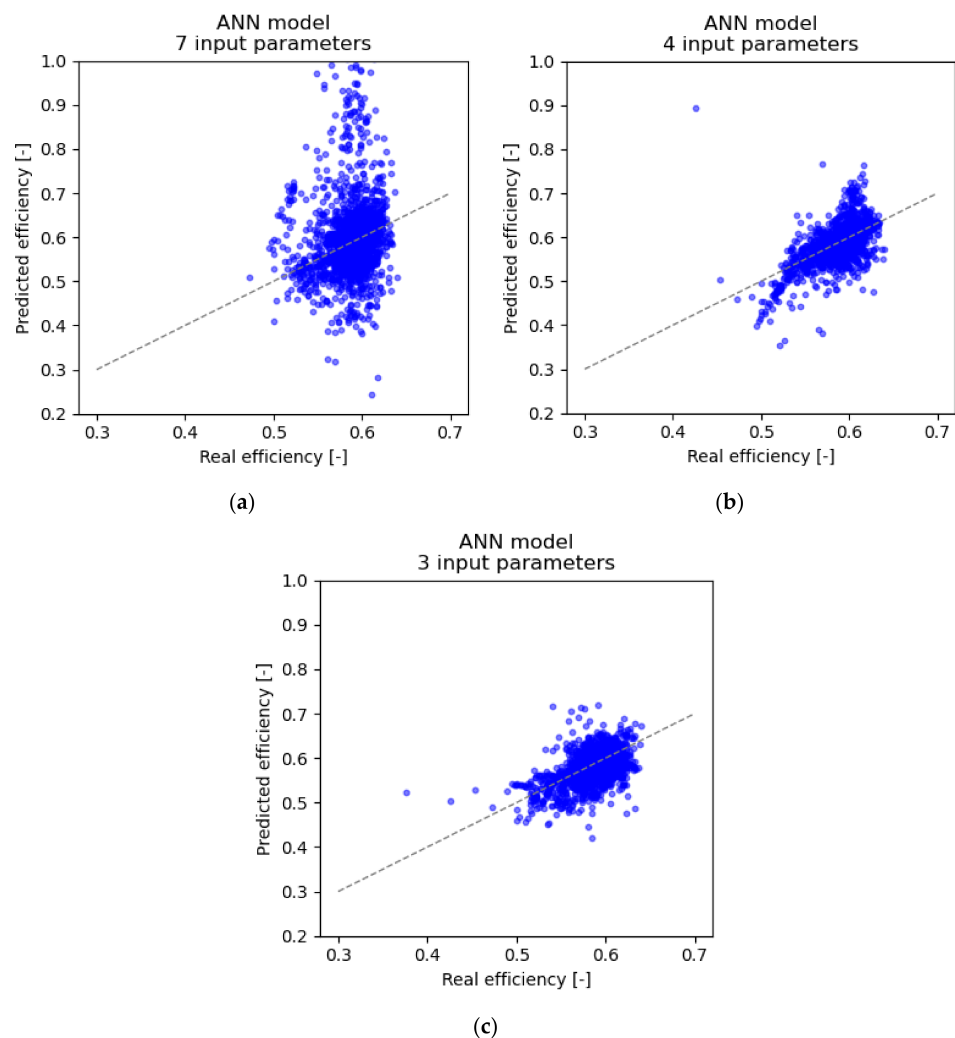


Figure 10. Predicted values as a function of actual values for 3 artificial neural network models with a decreasing number of input parameters: (a) 7 inputs parameters, (b) 4 inputs parameters, (c) 3 inputs parameters.

Artificial neural network models had a prediction error that was an order of magnitude higher in 10-fold cross-validation. This is probably due to overfitting, as confirmed by the significantly smaller error ($p < 0.01$) for a smaller number of input parameters.

Based on the results presented, artificial neural network models were less accurate than linear regression, and conclusions regarding the significance of input parameters were based on linear regression models.

Based on the performed analyses and the obtained mathematical models reflecting the relationships between the parameters measured in actual conditions and fan efficiency, four statistically significant parameters related to efficiency were found:

- suction duct pressure,
- current draw,
- rotational speed,
- flow speed of the medium.

The measured parameters, i.e., the temperature of the medium in the suction and discharge ducts and relative humidity, are not significantly correlated with the fan efficiency while operating at the existing facility. The aforementioned significance was based on a confidence interval of 95%.

The resulting model will be developed and expanded using measurement data obtained over a more extended period of operation. This will make it possible to determine a detailed course of action for further design and construction changes to the fans and the systems. Thus, the model will be used in the design process as the most beneficial tool for generating and verifying retrofit concepts for the systems and the fans themselves. The main objectives of the proposed system for collecting and analysing data and predicting future operating states are as follows:

- determining the current operating conditions and parameters,
- determining the current and future status of process production,
- collecting and analysing operational data and developing load cycles,
- evaluating alternative system designs and areas for improvement,
- determining the most technically and economically advantageous options, considering all the subsystems,
- implementing the best system design variant,
- evaluating energy consumption in relation to operating conditions,
- continuous monitoring and ongoing optimisation of the system,
- continuing to operate and maintain the system for maximum efficiency.

3. Conclusions

The article reports activities performed as part of a research and development project co-financed by the European Union from the European Regional Development Fund and its results. It presents detailed steps of the construction of a system to collect and process measurement data from fans installed in actual operating conditions and the results of analysis of this data. In particular, the following tasks were carried out:

- Measurement infrastructure was developed and implemented; this included defining the necessary measurement equipment set;
- Measuring equipment was mounted on selected ventilation systems with relevant fans;
- Systems have been implemented that allow continuous measurement of ventilation system parameters and remote transmission of data to a server where it is regularly analysed and selected for use in the process of modelling and diagnostics;
- A satisfactory level of correlation between the selected parameters measured in real conditions and the characteristics of the fan and the ventilation system was experimentally verified. This was determined by finding four statistically significant parameters at a confidence level of 95%;
- Two mathematical models were built and verified using linear regression and artificial neural networks.

Finally, the wider social and business context of the R&D project described in this article is worth highlighting. As was mentioned in the introduction, it can be regarded as a manifestation of the entrepreneurial orientation of the company that implements it. Additionally, it is linked to the adaptation of company's activities to megatrends that transform the conditions in which it operates. Emphasising the importance of the broader context when presenting technical solutions is important and desirable [34,35]. Among the current megatrends is the growing emphasis of societies and policymakers on introducing solutions aimed at reducing humanity's negative environmental impact [36]. This is done in several ways, including creating technical solutions offering the highest possible energy efficiency. Yet another major megatrend is the increasing reliance on artificial intelligence and automation. It makes it possible to collect, identify, and analyse data on the operation of equipment, which allows it to improve, adjust its operating parameters to specific operating conditions, determines its current state, and predicts possible failures [37]. Both megatrends are reflected in the assumptions of the project described here, as well as its progress and intended outcome, which is to create an industrial fan with a unique design. The activities and results described in this article can be seen as a significant first step towards achieving this goal.

Author Contributions: Concept: P.J., J.C., M.P. (Marian Piwowarski), M.B. and K.L.; methodology: M.P. (Marian Piwowarski), J.C., M.B., K.L. and P.Z.; software: J.C. and M.B.; validation: M.P. (Marian Piwowarski), J.C. and K.L.; formal analysis: M.P. (Marian Piwowarski) and K.L.; measurements: J.C. and K.C.; testing: J.C. and M.P. (Marian Piwowarski); sensor installation: J.C., I.G. and K.C.; data analysis: M.P. (Marian Piwowarski), J.C. and P.Z.; writing original project preparation: M.P. (Marian Piwowarski) and P.Z.; writing reviewing and editing: M.P. (Marian Piwowarski) and P.Z.; visualisation: M.P. (Marian Piwowarski), P.Z. and J.C.; supervision: M.P. (Marian Piwowarski), K.L. and P.J.; project administration: M.P. (Marta Pawłowska), M.B. and P.Z.; acquisition of funds: P.J., K.L. and M.B. All authors have read and agreed to the published version of the manuscript.

Funding: The activities described in the article were performed as part of the project "Development of fans with a design that considers installation conditions to a unique extent in order to reduce noise emissions and increase energy efficiency" co-financed by the European Union from the European Regional Development Fund under the Smart Growth Operational Programme 2014–2020. The Intermediary Body under the Programme is the National Centre for Research and Development.



European
Funds
Smart Growth



Republic
of Poland

European Union
European Regional
Development Fund



Institutional Review Board Statement: Not applicable.

Informed Consent Statement: Not applicable.

Data Availability Statement: Data available from the Authors on request.

Conflicts of Interest: The authors declare no conflict of interest.

References

1. Ferreras-Méndez, J.L.; Llopis, O.; Alegre, J. Speeding up new product development through entrepreneurial orientation in SMEs: The moderating role of ambidexterity. *Ind. Mark. Manag.* **2022**, *102*, 240–251. [\[CrossRef\]](#)
2. Kotler, P. *Marketing Management—Analysis, Planning, Implementation, and Control*, 9th ed.; Prentice-Hall: Englewood Cliffs, NJ, USA, 2002.
3. Covin, J.G.; Slevin, D.P. A conceptual model of entrepreneurship as firm behavior. *Entrep. Theory Pract.* **1991**, *16*, 7–26. [\[CrossRef\]](#)
4. Wales, W.J. Entrepreneurial orientation: A review and synthesis of promising research directions. *Int. Small Bus. J.* **2016**, *34*, 3–15. [\[CrossRef\]](#)
5. Gemünden, H.G.; Lehner, P.; Kock, A. The project-oriented organization and its contribution to innovation. *Int. J. Proj. Manag.* **2018**, *36*, 147–160. [\[CrossRef\]](#)
6. McKenny, A.F.; Short, J.C.; Ketchen, D.J., Jr.; Payne, G.T.; Moss, T.W. Strategic entrepreneurial orientation: Configurations, performance, and the effects of industry and time. *Strateg. Entrep. J.* **2018**, *12*, 504–521. [\[CrossRef\]](#)

7. Dess, G.G.; Lumpkin, G.T. The role of entrepreneurial orientation in stimulating effective corporate entrepreneurship. *Acad. Manag. Perspect.* **2005**, *19*, 147–156. [[CrossRef](#)]
8. Fortuna, Z. *Fans. Theoretical Foundations, Construction, Operation Aspects, and Application*, 1st ed.; Techwent: Krakow, Poland, 1998. (In Polish)
9. Piwowarski, M. *Flow Compressors*, 1st ed.; Foundation for the Promotion of the Shipbuilding Industry and Maritime Economy: Gdansk, Poland, 2017. (In Polish)
10. Cory, W.T.W. *Fans and Ventilation. A Practical Guide*, 1st ed.; Elsevier: London, UK, 2005.
11. Sathaye, N.; Phadke, A.; Shah, N.; Letschert, V. *Potential Global Benefits of Improved Ceiling Fan Energy Efficiency*; Ernest Orlando Lawrence Berkeley National Laboratory: Berkeley, CA, USA, 2012.
12. Yu, J.; Zhang, T.; Qian, J. *Electrical Motor Products. International Energy-Efficiency Standards and Testing Methods*; Woodhead Publishing Limited: Cambridge, UK, 2011.
13. Shah, N.; Sathaye, N.; Phadke, A.; Letschert, V. Efficiency improvement opportunities for ceiling fans. *Energy Effic.* **2015**, *8*, 37–50. [[CrossRef](#)]
14. Legg, R. *Air Conditioning System Design*; Butterworth-Heinemann: London, UK, 2017.
15. Bleier, F.P. *Fan Handbook: Selection, Application and Design*; The McGraw-Hill Companies Inc.: New York, NY, USA, 1998.
16. Rosiek, F.; Sikora, M.; Urbański, J.; Augustyn, W. An integrated model of ventilation network of mines KGHM PM SA. *Drives Control* **2012**, *R.14*, 60–63. (In Polish)
17. Szymański, Z. Modern, intelligent control and diagnostics systems for mine fan stations. *Drives Control* **2013**, *R.15*, 104–111. (In Polish)
18. Mironowicz, W.; Wasilewski, W. Monitoring and control systems to minimise the influence of mining plants on environment. *IFAC Proc.* **2000**, *33*, 323–328. [[CrossRef](#)]
19. Halama, A.; Hefczyc, M.; Krzemień, Z. Supervisory system of main ventilation fans operation at haft IV of ‘STASZIC’ colliery. *Min. Inform. Autom. Electr. Eng.* **2003**, *9*, 91–96. (In Polish)
20. Walaszczyk, J. Possibilities of optimizing the control of a simple ventilation system serving a single room. *Instal* **2021**, *11*, 30–39. (In Polish) [[CrossRef](#)]
21. Xu, Y.; Chen, N.; Shen, X.; Xu, L.; Pan, Z.; Pan, F. Proposal and experimental case study on building ventilating fan fault diagnosis based on cuckoo search algorithm optimized extreme learning machine. *Sustain. Energy Technol. Assess.* **2021**, *45*, 100975. [[CrossRef](#)]
22. *Norm EN-ISO-5802:2008E-1*; Industrial Fans-Performance Testing In Situ. European Committee of Standardization, Management Centre: Brussels, Belgium, 2008.
23. Piwowarski, M.; Ziemiański, P.; Czyżewicz, J.; Bortkiewicz, M.; Laszuk, K.; Galara, I.; Pawłowska, P.; Cybulski, K. Autonomous remote measurement system for industrial fans. *Instal* **2022**, *3*, 14–21. (In Polish) [[CrossRef](#)]
24. Kryłłowicz, W.; Kabałyk, K. Performance curves of centrifugal process compressors. *Instal* **2021**, *5*, 18–21. (In Polish) [[CrossRef](#)]
25. Edelman, D.; Móri, T.F.; Székely, G.J. On relationships between the Pearson and the distance correlation coefficients. *Stat. Probab. Lett.* **2021**, *169*, 108960. [[CrossRef](#)]
26. Gohain, P.B.; Jansson, M. Scale-invariant and consistent Bayesian information criterion for order selection in linear regression models. *Signal Processing* **2022**, *196*, 108499. [[CrossRef](#)]
27. Muthukrishnan, R.; Kalaivani, S. Data depth approach in fitting linear regression models. *Mater. Today Proc.* **2021**, *in press*.
28. Cai, Q.; Luo, X.Q.; Wang, P.; Gao, C.; Zhao, P. Hybrid model-driven and data-driven control method based on machine learning algorithm in energy hub and application. *Appl. Energy* **2022**, *305*, 117913. [[CrossRef](#)]
29. Wysocki, O.; Deka, L.; Elizondo, D.; Kropiwnicki, J.; Czyżewicz, J. Heavy duty vehicle fuel consumption modelling based on exploitation data by using artificial neural networks. In *Advances in Computational Intelligence*, 1st ed.; Rojas, I., Joya, G., Catala, A., Eds.; Springer: Cham, Switzerland, 2019; pp. 794–805. [[CrossRef](#)]
30. Pilarczyk, B.; Piwowarski, M. Application of neural networks for identification of forcedness having effect on magnitude of turbine rotor vibration using rotor trajectory. In Proceedings of the Third International Scientific Symposium—Technical, Economic and Environmental Aspects of Combined Cycle Power Plants COMPOWER’04, Gdańsk, Poland, 2–3 December 2004.
31. Zhao, Y.-P.; Chen, Y.-B. Extreme learning machine based transfer learning for aero engine fault diagnosis. *Aerosp. Sci. Technol.* **2022**, *121*, 107311. [[CrossRef](#)]
32. De Castro-Cros, M.; Velasco, M.; Angulo, C. Machine-learning-based condition assessment of gas turbines—A review. *Energies* **2021**, *14*, 8468. [[CrossRef](#)]
33. Ai, C.; Huang, L.; Zhang, Z. A Mann–Whitney test of distributional effects in a multivalued treatment. *J. Stat. Plan. Inference* **2020**, *209*, 85–100. [[CrossRef](#)]
34. Jamróz, M.; Piwowarski, M.; Ziemiański, P.; Pawlak, G. Technical and economic analysis of the supercritical combined gas-steam cycle. *Energies* **2021**, *14*, 2985. [[CrossRef](#)]
35. Plutecki, Z.; Lichota, J.; Sattler, P.; Ryszczuk, K. Identification of operating conditions of the CHP plant for the purpose of assessing the possibility of building a heat storage. *Instal* **2021**, *12*, 7–14. (In Polish) [[CrossRef](#)]

36. Kalaitzi, D.; Matopoulos, A.; Fornasiero, R.; Sardesai, S.; Barros, A.C.; Balech, S.; Muerza, V. Megatrends and trends shaping supply chain innovation. In *Next Generation Supply Chains*; Fornasiero, R., Sardesai, S., Barros, A.C., Matopoulos, A., Eds.; Springer: Cham, Switzerland, 2021; pp. 3–34.
37. Selcuk, S. Predictive maintenance, its implementation and latest trends. *Proc. Inst. Mech. Eng. Part B J. Eng. Manuf.* **2017**, *231*, 1670–1679. [[CrossRef](#)]