

# Immunization with an anti-idiotypic antibody against the broadly lipopolysaccharide-reactive antibody WNI 222-5 induces *Escherichia coli* R3-core-type specific antibodies in rabbits

Lore Brade<sup>1</sup>, Holger Heine<sup>1</sup>, Satish Raina<sup>1,2</sup>, Gracjana Klein<sup>1,2</sup>, Franco di Padova<sup>3</sup>, Helmut Brade<sup>1</sup> and Sven Müller-Loennies<sup>1</sup>

Innate Immunity  
18(2) 279–293  
© The Author(s) 2011  
Reprints and permissions:  
sagepub.co.uk/journalsPermissions.nav  
DOI: 10.1177/1753425911401055  
ini.sagepub.com  


## Abstract

The mouse monoclonal antibody (mAb) WNI 222-5 recognizes a carbohydrate epitope in the inner core region of LPS that is shared by all strains of *Escherichia coli* and *Salmonella enterica* and is able to neutralize their endotoxic activity *in vitro* and *in vivo*. Immunization of mice with mAb WNI 222-5 yielded several anti-idiotypic mAbs one of which (mAb S81-19) competitively inhibited binding of mAb WNI 222-5 to *E. coli* and *Salmonella* LPS. After immunization of rabbits with mAb S81-19, the serological responses towards LPS were characterized at intervals over two years. Whereas the serological response against the anti-idiotypic developed as expected, the anti-anti-idiotypic response against LPS developed slowly and antibodies appeared after 200 d that bound to *E. coli* LPS of the R3 core-type and neutralized its TNF- $\alpha$  inducing capacity for human peripheral mononuclear cells. We describe the generation of a novel anti-idiotypic antibody that can induce LPS core-reactive antibodies upon immunization in rabbits and show that it is possible, in principle, to obtain LPS neutralizing antibodies by anti-idiotypic immunization against the mAb WNI 222-5. The mimicked epitope likely shares common determinants with the WNI 222-5 epitope, yet differences with respect to either affinity or specificity do exist, as binding to smaller oligosaccharides of the inner core was not observed.

## Keywords

Lipopolysaccharide, neutralization, anti-anti-id, carbohydrate, mimicry

Date received: 25 August 2010; revised: 22 December 2010; accepted: 21 January 2011

## Abbreviations

CFA complete Freund's adjuvans  
IFA incomplete Freund's adjuvans  
FCS fetal calf serum

## Introduction

Infections frequently cause a systemic inflammatory response syndrome called sepsis triggered by stimuli of innate immune responses.<sup>1,2</sup> The recognition of LPS (endotoxin) of Gram-negative bacteria is by far the most potent stimulus<sup>1,3–5</sup> and, therefore, neutralization of LPS for the treatment of sepsis has been the subject of intensive research for decades.<sup>1,2,6</sup>

Lipopolysaccharides are glycopospholipids constituting the outer leaflet of the outer membrane and in wild-type bacteria such as *Escherichia*, *Salmonella*, *Klebsiella* and *Pseudomonas*, consist of a lipid A, a

core oligosaccharide (core-OS) and an O-polysaccharide (O-PS).<sup>7</sup> The membrane embedded lipid A is the endotoxic principle of LPS.<sup>8</sup> The O-PS is structurally very heterogeneous giving rise to a large number of serotypes within a species.<sup>7</sup>

Enterobacteria contain a second outer membrane polysaccharide called the enterobacterial common antigen (ECA). The polysaccharide of ECA consists of trisaccharide repeating units that are membrane-anchored

<sup>1</sup>Research Center Borstel, Leibniz-Center for Medicine and Biosciences, Borstel, Germany

<sup>2</sup>Microbiology Department, Chemical Faculty, Gdańsk University of Technology, Gdańsk, Poland

<sup>3</sup>Novartis, Basel, Switzerland

## Corresponding author:

Sven Müller-Loennies, Research Center Borstel, Leibniz-Center for Medicine and Biosciences, Parkallee 22, D-23845 Borstel, Germany.  
Email: sml@fz-borstel.de

by either phosphoglycerolipids (ECA<sub>PG</sub>) or the LPS core-OS (ECA<sub>LPS</sub>).<sup>9–11</sup> A soluble cyclic form has also been discovered<sup>10,12</sup> and its biosynthesis investigated.<sup>13,14</sup> Antibodies that are specific for the polysaccharide domain of ECA cross-react between different enterobacteria but clinical trials have failed to show a protective effect against sepsis.<sup>15</sup>

In contrast, antibodies against the O-PS are generally protective against a homologous strain in animal models of septic shock and, therefore, antibody therapy is regarded as a valid concept against Gram-negative sepsis, in principle.<sup>16</sup> However, translation into clinical application is precluded by the high specificity for a single serotype. A broader medical application would only be achievable with cross-reactive antibodies neutralizing LPS of the most clinically prevalent, if not all O-serotypes. Several antibodies to lipid A or inner parts of the core-region have also been reported to protect animals in models of sepsis. Their epitopes have been claimed to be 3-deoxy- $\alpha$ -D-manno-oct-2-ulopyranosonic acid (Kdo) and lipid A, which are inaccessible to antibody binding in wild-type LPS and, thus, there is considerable doubt that these antibodies could have been protective in regard to their binding properties. Several of these antibodies subsequently failed to confer protection in clinical trials, leading to a controversial debate and general questioning of the concept.<sup>17–19</sup> However, based on the reactivity with inner core epitopes of *Escherichia coli* J-5 LPS, a complex vaccine containing group B meningococcal outer membrane protein is currently in development.<sup>20,21</sup>

The mAb WN1 222-5 is unique in its ability to bind *E. coli* LPS and bacteria of a large collection of blood, fecal and urinary isolates independently of the serotype.<sup>22</sup> Importantly, this antibody also neutralizes LPS toxicity *in vitro* and is protective in various *in vivo* models of endotoxic shock.<sup>22–24</sup> Using whole LPS and a number of neoglycoconjugates containing core-OS from all *E. coli* core types (R1 to R4 and K-12), *Salmonella enterica* and the mutant strain *E. coli* J-5, we have identified parts of an epitope important for high-affinity binding of the neutralizing mAb WN1 222-5.<sup>25</sup> Immunization of mice and rabbits with such neoglycoconjugates did not lead to the formation of mAb WN1 222-5-type antibodies (unpublished observation), indicating the recognition of a conformational epitope and reflecting the difficulties generally encountered to obtain such cross-reactive antibodies.

It has been observed that antibodies (Ab2, anti-id) that are specific for another antibody's (Ab1, idiotype) combining site may induce antibodies (Ab3, anti-anti-id) upon immunization that resemble Ab1 in terms of specificity.<sup>26</sup> Thus, if Ab1 was a carbohydrate-specific antibody, it is possible, in principle, to achieve a structural or functional mimicry of carbohydrates by antibodies. Such an anti-idiotypic mimicry of carbohydrates has been reported, including successful production of antibodies that cross-

react with the original antigen.<sup>27–29</sup> A structural investigation has revealed the molecular basis of such mimicry and that functional mimicry can be achieved even if only a subset of contact residues at the combining site are retained between the different interactions.<sup>30–32</sup> This concept has been transferred even to peptides and such mimics, called mimotopes, can be used in vaccines to achieve T-cell help in the generation of carbohydrate-specific antibodies.<sup>33–40</sup> The immunization with anti-idiotypic antibodies has been reported to induce a protective immune response also against LPS.<sup>41–45</sup>

The potential of anti-carbohydrate antibodies to serve as template immunogens for the generation of anti-carbohydrate antibodies in principle led us to investigate whether this approach could be successfully exploited for the generation of LPS-neutralizing antibodies and be used to overcome the general difficulty in obtaining cross-reactive antibodies by immunization with core-OS. As mAb WN1 222-5 is so far the only example combining these properties, we have chosen it to immunize mice to generate an anti-idiotypic antibody and characterized the anti-anti-idiotypic response in rabbits. Such an approach may also be important for resolving nontyphoidal salmonellosis, which is a serious health threat for human immunodeficiency virus (HIV)-infected individuals.<sup>46,47</sup> Vaccination against LPS has been suggested as an option for treatment;<sup>48</sup> however, aberrant formation of antibodies against the O-PS of *S. enterica* has been reported to prevent binding of protective antibodies and neutralization of the bactericidal activity of serum.<sup>49</sup> This may be overcome by redirecting the immune response towards the core-OS.

## Materials and methods

### Bacterial LPS and LPS-conjugates

Lipopolysaccharides of *E. coli* wild-type strains O4, O6, O12, O15, O18 and O111 were prepared by phenol-water extraction; LPS of *S. enterica* sv. Minnesota (*S. minnesota*) strain R60 (rough mutant containing the complete core) and *E. coli* rough mutants of core type R1 (strain F470), R2 (strain F576), R3 (strain F653), R4 (strain F2513) and K-12 (strain 3110) were obtained by extraction of bacteria with phenol/chloroform/light petroleum ether and the deacylated LPS (LPS<sub>deac</sub>) after partial chemical degradation as described.<sup>50–52</sup> Rough LPS<sub>deac</sub> was conjugated to bovine serum albumin (BSA) as described.<sup>53</sup> In addition, mutants of the *E. coli* strains were constructed which were unable to synthesize the ECA; details will be described elsewhere. These mutants were used for SDS-PAGE and Western blots. *Klebsiella pneumoniae* strain i28/94 and the ECA-specific mAb 898 were kind gifts of D. S. Hansen (Statens Serum Institute, Copenhagen, Denmark) and Prof. D. Bitter-Suermann (Institute of Medical Microbiology, Hannover, Germany), respectively.

### Immunization of mice with WN1 222-5

The mouse mAb WN1 222-5 recognizes an epitope in the inner core region of *S. enterica* and all *E. coli* core types, independent of whether an O-antigen is present or not.<sup>22</sup> BALB/c mice were immunized with this mAb by the following two protocols. Firstly, three mice were injected i.p. on day 0 with native mAb (150 µg in 150 µl of PBS) emulsified with an equal volume of Freund's complete adjuvant. On day 21, another 150 µg of mAb WN1 222-5 in 150 µl of phosphate buffered saline (PBS) containing as a cross-linking reagent 0.00625% of glutaraldehyde (WN1 222-5-GA) were emulsified with an equal volume of Freund's incomplete adjuvant and injected subcutaneously (s.c.) at four different sites.<sup>54</sup> On day 42 and 63, one mouse received 150 µg of WN1 222-5-GA i.p. and was boosted on day 137 i.v. with 30 µg of WN1 222-5 F(ab)<sub>2</sub> fragments in 200 µl of PBS. The mouse was boosted again on days 176 (i.v.), 177 (i.p.) and 178 (i.p.) with 30 µg each of WN1 222-5 F(ab)<sub>2</sub> fragments in 200 µl of PBS. Two days after the last injection, the animal was exsanguinated and the spleen was removed for fusion (number S81).

In the second protocol, only native protein without cross-linker was used following a published protocol.<sup>55</sup> Three BALB/c mice were injected on day 0 s.c. at four different sites with mAb WN1 222-5 (50 µg in 125 µl of PBS) emulsified with an equal volume of Freund's complete adjuvant. On day 28, another 50 µg of mAb WN1 222-5 in 100 µl of PBS emulsified with an equal volume of Freund's incomplete adjuvant were injected i.p. One mouse was boosted with 30 µg each of WN1 222-5 F(ab)<sub>2</sub> in 200 µl of PBS on days 130 (i.v.), 238 (i.v.), 239 (i.p.) and 240 (i.p.). Two days after the last injection, the animal was exsanguinated and the spleen removed for fusion (number S83).

### Fusion and hybridoma production

Spleen cells were isolated and fused with X63 Ag8.65 myeloma cells in a ratio of 2:1 according to conventional protocols. After selection in HAT medium, culture supernatants were tested for reactivity with WN1 222-5 F(ab)<sub>2</sub> by enzyme-linked immunosorbent assay (ELISA; see below). From fusion S81, two mAbs were obtained, S81-10 and S81-19; from fusion S83 three mAbs were obtained, S83-1-16, S83-1-23 and S83-11. Monoclonal antibodies were cloned three times by limiting dilution and isotyped using a commercial isotyping kit (Bio-Rad, Hercules, CA, USA). Purification was achieved by affinity chromatography using protein G (Amersham, Biosciences, Freiburg i. Br., Germany) or protein L (Bind<sup>TM</sup> L, Fluka, Buchs, Switzerland).

### Isolation of F(ab)<sub>2</sub> fragments

The F(ab)<sub>2</sub> of mAb WN1 222-5 (IgG<sub>2a</sub>) were prepared as described.<sup>56</sup> Briefly, mAb WN1 222-5 (0.6 mg/ml in

0.1 M citrate buffer pH 4.1) was incubated with pepsin (75 µg/ml) for 16 h at 37°C. When the cleavage was completed as monitored by SDS-PAGE, the reaction was stopped by the addition of Tris-HCl (3 M, pH 8.6) until the pH was neutral. The cleavage of S81-19 (IgG<sub>1</sub>) was performed under the following conditions; the mAb concentration was adjusted to 1 mg/ml in citrate buffer (0.1 M, pH 3.5) and digested with pepsin (25 µg/ml) for 4 h at 37°C. The remaining steps were as before.

### Enzyme-linked immunosorbent assay with F(ab)<sub>2</sub>

Using ELISA, we determined the titer of S81-19 against WN1 222-5 and of rabbit anti-anti-idiotypic antisera against S81-19. Of these mAbs F(ab)<sub>2</sub> fragments were coated (100 and 200 ng/well) at 4°C for 16 h in carbonate buffer (50 mM, pH 9.2) onto Maxisorb microtiter plates (96-well, U-bottom, Nunc, Langensfeld, Germany). If not stated otherwise, 50 µl of volumes were used in all incubation steps. Plates were washed once in PBS (all PBS buffers were supplemented with 0.01% thimerosal) and were then blocked with PBS supplemented with casein (PBS-C, 2.5%, Sigma, St Louis, MO, USA) for 1 h at 37°C on a rocker platform followed by two washings. Appropriate anti-idiotypic antibody dilutions in PBS-C supplemented with 5% BSA (PBS-CB) or undiluted hybridoma supernatants were added and incubated for 1 h at 37°C. The rabbit antisera were diluted 1:500 in PBS-CB.

After three washings, 50 µl Fc-specific horseradish peroxidase (HRP)-conjugated goat anti-mouse IgG or goat-anti-rabbit IgG (both from Dianova, Hamburg, Germany) diluted in PBS-CB 1:1000 and 1:2000, respectively, was added and incubation continued for 1 h at 37°C. Goat anti-mouse IgG was detected by addition of 100 µl of aqueous ready-to-use solution of 3,3',5,5'-tetramethylbenzidine (TMB substrate, Uptima Interchim, Monluçon, France) after three washings with PBS. The reaction was stopped after 30 min at 37°C by the addition of 100 µl of 1 M H<sub>2</sub>SO<sub>4</sub>. The plates were read by a microplate reader (Tecan Sunrise, Männedorf, Switzerland) at 450 nm.

For detection of goat-anti-rabbit IgG azino-di-3-ethyl-benzthiazolinsulfonic acid (ABTS) substrate instead of TMB was used. The substrate solution was freshly prepared by dissolving ABTS in 100 mM sodium citrate buffer, pH 4.5 (1 mg/ml) and adding H<sub>2</sub>O<sub>2</sub> (0.0025% final conc.). The reaction was stopped after 30 min incubation at 37°C by addition of aqueous oxalic acid (2%) and absorbance read at 405 nm.

### Enzyme-linked immunosorbent assay with LPS

The titers of rabbit anti-anti-idiotypic antisera (diluted 1:100 in PBS-C) against LPS were determined by ELISA. Microtiter polyvinyl plates (96-well, Falcon

3911; Becton Dickinson, Heidelberg, Germany) were coated for 16 h at 4°C with 250 ng/well of LPS diluted in PBS, pH 7.2. The coated plates were washed four times with PBS and blocked for 1 h with PBS-C under gentle agitation at 37°C. The remaining steps were as described above, omitting BSA from all buffers and a solution of ABTS/H<sub>2</sub>O<sub>2</sub> in citrate buffer as substrate, but the HRP-conjugated goat anti-rabbit IgG was diluted 1:500 in PBS-C in this assay.

### ***Biotinylation of mAb WN1 222-5 and mAb S81-19***

Sulfo-succinimidyl-6-(biotinamido) hexanoate (NHS-LC biotin, Pierce, Rockford, IL, USA) was dissolved at a concentration of 5 mg/ml in DMSO and added to a 1 mg/ml solution of mAb WN1 222-5 in 50 mM phosphate buffer pH 7.6 to give a molar ratio of 1:20 and the solution incubated for 2 h at 0°C. After the reaction, the sample was dialyzed against phosphate buffer (50 mM, pH 7.6), filter-sterilized (0.22 µm) and stored at 4°C. The activity of the biotinylated mAb was confirmed by LPS ELISA using anti-IgG (Fc) as secondary antibody. The titers were identical to non-biotinylated mAb.

Monoclonal Ab S81-19 was biotinylated using non-spacered NHS-Biotin (Pierce). The NHS-biotin was dissolved in DMSO (5 mg/ml) and 13 µl were added to 450 µl of a 0.9 mg/ml mAb S81-19 solution (molar ratio 1:50) followed by incubation for 1 h at 20–22°C and dialysis as described above. The activity of the biotinylated mAb was confirmed by ELISA with F(ab)<sub>2</sub> of WN1 222-5 as antigen using anti-IgG (Fc) as secondary antibody (1:500). The titers were identical to non-biotinylated mAb.

### ***Inhibition of mAb S81-19 binding to immobilized WN1 222-5 by LPS***

To study whether LPS and mAb S81-19 bind competitively to WN1 222-5 we have performed competition ELISA in which the plates (Maxisorb, Becton Dickinson) were coated with F(ab)<sub>2</sub> of WN1 222-5 (300 ng/cup in PBS) over 2 d at 4°C. The coated plates were washed four times with PBS and then blocked for 1 h with PBS-C. Twenty µg of LPS in 30 µl PBS-CB were transferred to V-shaped microtiter plates (96-well, Nunc) serially diluted (1:2) and an equal volume of biotinylated mAb S81-19 diluted in the same buffer was added to each cup. The mAb concentration was adjusted to give an OD<sub>450</sub> between 0.5 and 1.0 without the addition of inhibitor. Fifty µl of the mixture were transferred to coated ELISA plates and incubation was continued for 1 h at 37°C. After three washings with PBS, HRP-conjugated streptavidin (Dianova) diluted 1:2000 in PBS-CB was added and incubation was continued for 1 h at 37°C. After three washings in PBS the remaining steps were as described using TMB as substrate.

### ***Inhibition of binding of mAb WN1 222-5 to LPS by S81-19***

The binding of mAb WN1 222-5 to LPS was competitively inhibited with anti-idiotypic mAb or F(ab)<sub>2</sub> thereof. Polyvinyl plates (96-well Falcon 3911, Becton Dickinson) were coated with LPS (100 ng/cup in 50 µl PBS) for 16 h at 4°C. The coated plates were washed 4 times with PBS and then blocked for 1 h with PBS-C. Serial two-fold dilutions of inhibitor protein in PBS-C (30 µl) were mixed in V-shaped microtiter plates (96-well, Nunc) with an equal volume of biotinylated mAb WN1 222-5 diluted in the same buffer. The mAb concentration was adjusted to give an OD<sub>405</sub> between 0.5 and 1.0 in ELISA in the absence of inhibitor. Fifty µl of the mixture were transferred to coated ELISA plates and incubation was continued for 1 h at 37°C. After three washings in PBS, HRP-conjugated streptavidin (Dianova) diluted 1:2000 in PBS-C was added and incubation was continued for 1 h at 37°C. After three washings in PBS, the remaining steps were done as described using ABTS as substrate. For testing mAb S81-19 and F(ab)<sub>2</sub>, the highest inhibitor concentration was 50 nM and serially diluted 1:2. For determination of the inhibitory activity of LPS and conjugate the highest concentration was 5 µg/ml.

### ***Inhibition of binding of WN1 222-5 to deactivated lipopolysaccharide (LPS<sub>deac</sub>)-BSA glycoconjugates by S81-19***

The binding of mAb WN1 222-5 to LPS<sub>deac</sub>-BSA glycoconjugates was competitively inhibited with anti-idiotypic mAb. Maxisorb microtiter plates (96-well, U-bottom, Nunc) were coated with LPS<sub>deac</sub>-BSA glycoconjugates in carbonate buffer (50 mM, pH 9.2) using 1 pmol of ligand/well at 4 °C for 16 h, washed twice in PBS and blocked with PBS-C for 1 h at 37°C on a rocking platform followed again by two washings in PBS. Serial two-fold dilutions of S81-19 in PBS-CB (30 µl) were mixed in V-shaped microtiter plates (96-well, Nunc) with an equal volume of biotinylated mAb WN1 222-5 diluted in the same buffer to give an OD<sub>450</sub> between 0.5 and 1.0 without the addition of mAb S81-19. Fifty µl of the mixture were transferred to coated ELISA plates and incubation was continued for 1 h at 37°C. After three washings in PBS, HRP-conjugated streptavidin (Dianova) diluted 1:2000 in PBS-CB was added and incubation was continued for 1 h at 37°C. The remaining steps were as described above using TMB as substrate.

### ***Immunization of rabbits with S81-19***

Four rabbits were immunized by the schedule shown in Table 1. Blood samples were taken from the ear vein



before immunization and up to 728 d after immunization. Sera were stored at  $-20^{\circ}\text{C}$ .

### Isolation of IgG from rabbit sera

Rabbit serum (2 ml) was dialyzed against Tris-HCl buffer (10 mM, pH 8.0) and circulated on a glass column packed with 1 ml of Protein-A Sepharose 4 Fast Flow (GE Healthcare Bio-Sciences, Uppsala, Sweden) using a peristaltic pump. After washing in the same buffer, the bound IgG was eluted with glycine-HCl (0.1 M, pH 3.0). The eluate fractions were brought to  $\sim$  pH 5.0 with sodium bicarbonate. The protein concentration was determined by the BCA Protein Assay (Pierce), relevant fractions were pooled, filter-sterilized (0.22  $\mu\text{m}$ ) and stored at  $4^{\circ}\text{C}$ .

### SDS-PAGE and Western blots

To analyze the reactivity of antisera taken from immunized rabbits on different days in blots, LPS (100 to 200  $\mu\text{g}$ ) was applied to one large slot (12.5 cm) and separated by SDS-PAGE on a 5% stacking and 15% separating gel at a constant voltage of 150 V. The gels were transferred for 16 h onto polyvinylidene difluoride (PVDF) membranes (pore size 0.45  $\mu\text{m}$ , Millipore, Schwalbach, Germany) by tank blotting (Bio-Rad). Before use, the membranes were wetted in methanol for 10 s, after which they were washed in distilled water for at least 5 min. Following transfer, the blots were cut into stripes (0.5 cm width) and placed in Mini-incubation trays (Bio-Rad). The following steps were

performed at  $20\text{--}22^{\circ}\text{C}$ . After blocking in blotting buffer (50 mM Tris-HCl, 0.2 M NaCl, pH 7.4) supplemented with 10% non-fat dry milk for 1 h, the antisera diluted in blocking buffer were added, incubated for 16 h and washed six times (5 min each) in blotting buffer. Alkaline phosphatase-conjugated goat-anti rabbit IgG (heavy and light chain specific, Dianova) was added (diluted 1:1,000 in blotting buffer) and incubation was continued for another 2 h. After washing as before, 5-bromo-4-chloro-3-indoylphosphate and *p*-toluidine *p*-nitroblue tetrazolium chloride (Bio-Rad) were added as substrates according to the supplier's instruction. After 15 min the reaction was stopped by the addition of distilled water. Staining with alkaline silver nitrate was performed as described.<sup>57,58</sup>

For an analysis of LPS from ECA<sup>+</sup>- and ECA<sup>-</sup>-strains of *E. coli* in silver stained gels and the reactivity with mAb 898 or polyclonal anti-anti-idiotypic-antiserum in Western blots, the amount of LPS loaded per lane was 2  $\mu\text{g}$ , 10  $\mu\text{g}$  and 20  $\mu\text{g}$ , respectively. For these experiments the membranes were not cut and AP-conjugated goat-anti mouse IgG (heavy and light chain specific, Dianova, diluted 1:1000) or goat-anti-rabbit IgG was used as secondary antibody, respectively.

### Stimulation of human mononuclear cells (MNC) with LPS

Mononuclear cells were isolated from the heparinized blood of healthy adult donors by Ficoll-Isopaque density gradient centrifugation.<sup>59</sup> Isolated MNC were

**Table 1.** Schedule for the immunization of rabbits with anti-idiotypic antibody S81-19. Immunizations were initiated injecting 100  $\mu\text{g}$  of each immunogen followed by injections of 150  $\mu\text{g}$  each at later timepoints. Immunogens were dissolved in 2 ml for the first three immunizations and in 0.5 ml for the final injections and were divided into equal aliquots for the different injection routes

Rabbit	Day	Immunogen	Adjuvant <sup>b</sup>	Injection route
K436	0	IgG	CFA	4 aliquots lymphnodes <sup>a</sup>
	42	F(ab) <sub>2</sub>	IFA	6 aliquots s.c. back skin
	326	F(ab) <sub>2</sub>	IFA	6 aliquots s.c. back skin
	629	F(ab) <sub>2</sub>	no	i.v.
K437	0	F(ab) <sub>2</sub>	CFA	4 aliquots lymphnodes
	42	F(ab) <sub>2</sub>	IFA	6 aliquots s.c. back skin
	326	F(ab) <sub>2</sub>	IFA	6 aliquots s.c. back skin
	629	F(ab) <sub>2</sub>	no	i.v.
K438	0	IgG	CFA	4 aliquots lymphnodes
	42	F(ab) <sub>2</sub>	IFA	6 aliquots s.c. back skin
	487	F(ab) <sub>2</sub>	IFA	6 aliquots s.c. back skin
	718	F(ab) <sub>2</sub>	no	i.v.
K439	0	F(ab) <sub>2</sub>	CFA	4 aliquots lymphnodes
	42	F(ab) <sub>2</sub>	IFA	6 aliquots s.c. back skin
	487	F(ab) <sub>2</sub>	IFA	6 aliquots s.c. back skin
	718	F(ab) <sub>2</sub>	no	i.v.

<sup>a</sup>Injection into the inguinal and axillary lymphnodes; <sup>b</sup>CFA, complete Freund's adjuvant; IFA, incomplete Freund's adjuvant.

washed in PBS and cultured in RPMI 1640 containing 10% fetal calf serum (FCS), 100 U/ml penicillin and 100 mg/ml streptomycin (Biochrom, Berlin, Germany). Cells [ $1 \times 10^6$ /ml] were stimulated in triplicates with 1 ng/ml of various LPS types. In blocking experiments, isolated IgG of rabbit sera (up to 400  $\mu$ g/ml) obtained after immunization with anti-idiotypic mAb S81-19 was mixed with LPS before the stimulation of cells for 30 min. After 4 h, supernatants were collected and the content of TNF- $\alpha$  was quantified by ELISA (Biosource).

## Results

### Generation and characterization of monoclonal anti-idiotypic antibodies against mAb WN1 222-5 in mice

We have compared two protocols for immunizing BALB/c mice with the intention of inducing the formation of anti-idiotypic antibodies against mAb WN1 222-5. In one protocol, a combination of intact Ig and F(ab)<sub>2</sub> was used, while in the other the Ig molecules were cross-linked by glutardialdehyde derivatization.<sup>54</sup> Both immunizations yielded anti-idiotypic antibodies against mAb WN1 222-5 with a titer of several millions in ELISA using immobilized F(ab)<sub>2</sub> (Table 2). The titers against normal mouse IgG as antigen were below 5,000. From these mice, five mAb were obtained, two after immunization with cross-linked Ig and three after immunization with the native proteins. The titers of these clones and of the sera taken on the day of fusion determined by ELISA are shown in Table 2. The clone S81-19 (IgG<sub>1</sub>) bound in ELISA at a very low concentration of 70 pM (10 ng/ml, Figure 1) to 800 ng immobilized mAb WN1 222-5, indicating a high affinity binding.

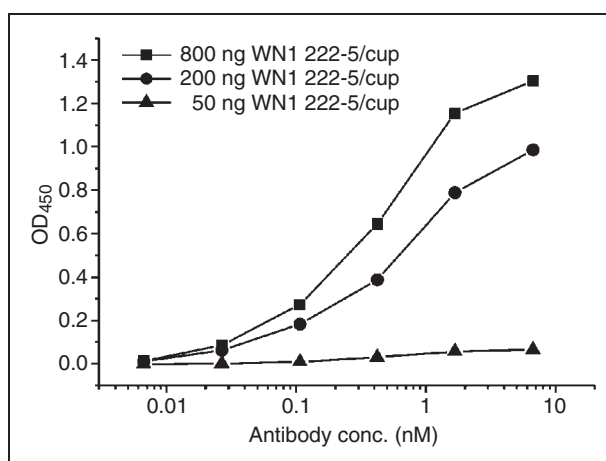
Next, we tested the ability of five anti-idiotypic mAbs to inhibit the binding of mAb WN1 222-5 to LPS ligands. Only mAb S81-19 was able to inhibit the binding to *E. coli* rough LPS of all core types (R1 to R4 and K-12) and *S. minnesota* strain R60 (Table 3). The same was observed for neoglycoconjugates containing rough LPS<sub>deac</sub> as carbohydrate ligands (Table 3). In this assay, we have also included a neoglycoconjugate of a tetraphosphorylated octasaccharide which we had isolated from the mutant *E. coli* J-5 and identified as the smallest ligand bound with high affinity by mAb WN1 222-5.<sup>25</sup> The concentrations of S81-19 resulting in 50% inhibition of mAb WN1 222-5 binding ranged between 39 and 156 ng/ml (0.26–1.0 nM). To rule out that inhibition of binding was an effect of steric hindrance, we also performed inhibition experiments with purified F(ab)<sub>2</sub> of mAb WN1 222-5 that was immobilized on the ELISA plate, and then used LPS as inhibitors for the binding of the biotinylated anti-Id mAb S81-19 (Figure 2).

**Table 2.** Binding in ELISA of hybridoma supernatants to F(ab)<sub>2</sub> of WN1 222-5 and normal mouse IgG

Clone <sup>a</sup>	Final dilution of supernatants yielding OD <sub>405</sub> > 0.2 with F(ab) <sub>2</sub> antigens of	
	WN1 222-5	Mouse IgG
S81-10	25.600	<100
S81-19	51.200	<100
S83-1-16	128.000	<100
S83-1-23	256.000	<100
S83-11	51.200	<100
S81 anti-id serum <sup>b</sup>	5.120.000	<5.000
S83 anti-id serum	2.560.000	<5.000

<sup>a</sup>S81 and S83 clones were obtained after immunization with cross-linked or native proteins, respectively. For details of the immunization protocol see Material and Methods.

<sup>b</sup>Mouse serum obtained on the day of fusion.



**Figure 1.** Binding curves of anti-idiotypic mAb S81-19 to immobilized F(ab)<sub>2</sub> of mAb WN1 222-5. ELISA plates were coated with 50 (triangles), 200 (circles) or 800 ng/cup (squares) F(ab)<sub>2</sub>. Each data point represents the average of quadruplicate measurements with confidence values not exceeding 10%.

As negative controls in this experiment served two LPS from *S. minnesota* which are not bound by mAb WN1 222-5, i.e. LPS containing only Kdo (strain R595) and LPS of strain R5. The latter lacks heptose of the inner core<sup>60</sup> but is otherwise identical to the *E. coli* J-5 structure. Also in this assay, LPS of all tested *E. coli* core-types were able to inhibit S81-19 binding in a concentration dependent manner (Figure 2).

According to these results, S81-19 was considered potentially anti-paratopic (Ab2 $\beta$ ) and used for further

**Table 3.** Inhibition of mAb WN1 222-5 binding to LPS structures by anti-idiotypic mAb S81-19

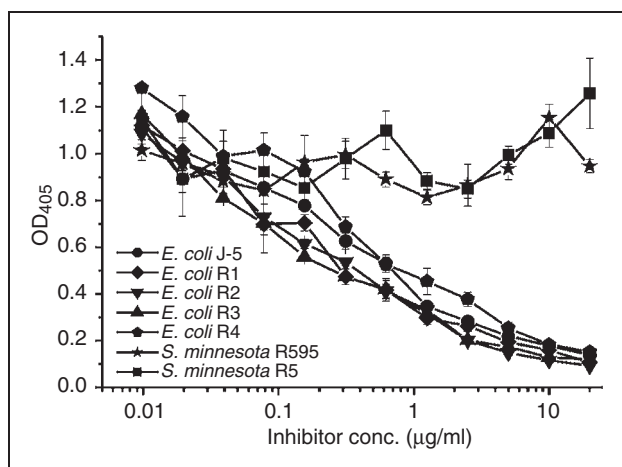
Antigen	Core structure <sup>b</sup>	Concentration (ng/ml) of S81-19 inhibiting 50% binding of WN1 222-5 to <sup>a</sup>	
		LPS	LPS <sub>deac</sub> -BSA
<i>E. coli</i> F470	R1	39	156
<i>E. coli</i> F576	R2	78	156
<i>E. coli</i> F653	R3	78	156
<i>E. coli</i> F2513	R4	78	156
<i>E. coli</i> K-12	K-12	78	78
<i>E. coli</i> J-5	octasaccharide-P <sub>4</sub>	n.a. <sup>c</sup>	78
<i>S. minnesota</i> R60	R2	78	n.d. <sup>d</sup>

<sup>a</sup>Whole LPS or BSA-neoglycoconjugates of LPS<sub>deac</sub> from *E. coli* and *S. enterica* sv. Minnesota were immobilized on ELISA plates and incubated with biotinylated F(ab)<sub>2</sub> of WN1 222-5 after preincubation with monoclonal antibody (mAb) S81-19.

<sup>b</sup>for structures see reference 7.

<sup>c</sup>not applicable.

<sup>d</sup>not determined.



**Figure 2.** Inhibition of binding of biotinylated anti-idiotypic mAb S81-19 to immobilized WN1 222-5 F(ab)<sub>2</sub> fragments by the following LPS: *S. minnesota* R595 (Re-LPS, stars), *S. minnesota* R5 (RcP-LPS, squares), *E. coli* J-5 (RcP+-LPS, circles), *E. coli* R1 (diamonds), *E. coli* R2 (triangles down), *E. coli* R3 (triangles up) and *E. coli* R4 (pentagons). Each data point represents the average of triplicate measurements.

immunizations aiming at the induction of anti-anti-idiotypic antibodies<sup>26</sup> in rabbits.

### Generation and characterization of anti-anti-idiotypic antibodies against mAb S81-19 in rabbits

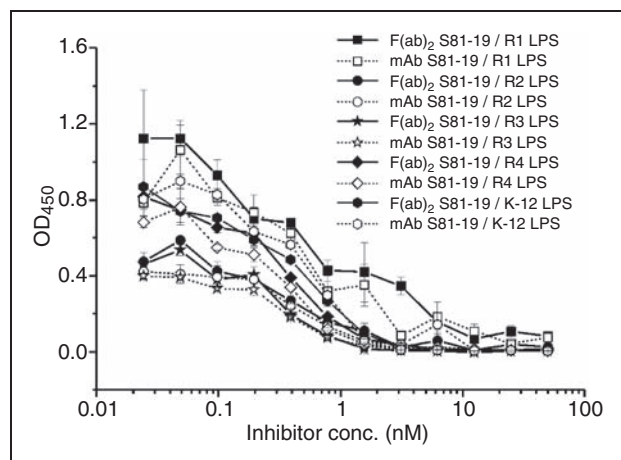
Immunization of rabbits was achieved with either F(ab)<sub>2</sub> alone or by a combination of IgG and F(ab)<sub>2</sub> of S81-19. To ensure that pepsin cleavage did not affect the binding site, we compared the ability of mAb and F(ab)<sub>2</sub> to inhibit the binding of mAb WN1 222-5 to all *E. coli* core types (Figure 3). Both preparations yielded

identical inhibition curves. After immunization of four rabbits (K436-439) with S81-19 F(ab)<sub>2</sub>, the immune response was then followed over 728 d by taking serum samples of each individual animal at 12 time points and analyzing the reactivity in ELISA and blots. In dot blots, all different core types were stained (data not shown) whereas in Western blots, i.e. after separation by SDS-PAGE, only the core-OS of the R3-type was stained, in addition to a high molecular mass polysaccharide with a typical banding pattern (Figure 4) in all core types apart from the *E. coli* R3 LPS. This polymer was identified as ECA using the anti-ECA mAb 898 (Figure 4).<sup>61</sup> As this reactivity was observed for *E. coli* but not for an ECA-containing LPS preparation of *K. pneumoniae* i28/94, the antiserum did not contain antibodies against the ECA but against an epitope composed of the *E. coli* core with attached ECA.

As we were focussing on LPS core-reactive antibodies, we constructed *E. coli* mutants unable to synthesize ECA (unpublished data); the silver-stained gel after SDS-PAGE (Figure 5A) showed that the LPS of these mutants was unaltered and that they were not stained with the anti-ECA antibody (Figure 5B). Immunostaining with antiserum K437 (day 576) confirmed that among ECA negative strains, a reaction was only observed with the LPS core fraction of *E. coli* R3 (Figure 5C).

Because of the induction of core-reactive antibodies which bound ECA, we have reinvestigated the binding of WN1 222-5 to LPS of all *E. coli* core types by ELISA. There was no significant difference between LPS from ECA positive and negative bacteria (Figure 6).

Western-Blots (Figure 7) revealed that only the *E. coli* F653 rough-type LPS and *E. coli* smooth LPS of serotypes O15 and O111, that all possess the R3 core type, were stained by the hyperimmune sera collected on days 359 (rabbits 436 and 437) and 371 (rabbits 438



**Figure 3.** Comparison of S81-19 mAb (open symbols, dashed lines) and F(ab)<sub>2</sub> (filled symbols, straight lines) in their ability to inhibit the binding of biotinylated WNI-222-5 to *E. coli* R1 (squares), R2 (circles), R3 (stars), R4 (diamonds) and K-12 (hexagons) LPS. Each data point represents the average of triplicate measurements.

and 439). Each rabbit thus developed an immune response against the *E. coli* R3 rough LPS. The preimmune sera (day 0) of K437 and 438 already had antibodies against *E. coli* O111 and O15, respectively. In both cases, however, only the high molecular mass LPS, i.e. molecules with multiple O-chain repeating units, were stained, whereas the low molecular mass LPS without O-antigen was not stained. After immunization all rabbits showed seroconversion with antibodies that bound to the high and low molecular mass fractions equally well. We also tested binding to smooth LPS of *E. coli* O4, O6 and O18 (R1 core type) and *E. coli* O12 (R2 core type); none of the animals had raised antibodies against these antigens (data not shown) apart from the reactivity with the ECA. Figure 8 shows the development of antibodies over the observed period of time; 5 out of the 12 sera from two animals with the strongest reactivity are shown. After the first two immunizations (days 0 and 42), neither antibodies against the O-PS nor the core-OS of LPS were detected in the sera collected on day 49. At day 135 (rabbit K437) and day 144 (rabbit K438), antibodies against the rough LPS and the O-PS containing LPS were present, which at this time point stained smooth LPS only weakly. Rabbit K437 received the last booster injection on day 629 and was exsanguinated on day 636. This rabbit received a booster injection on day 326 and the serum sample taken 33 d later had substantially increased antibodies against smooth and rough LPS. The final serum of this rabbit, showed a further strong increase in antibody titers binding to smooth and also rough type LPS. Rabbit K438 received a booster injection on day 487 and serum was collected on day 508. Also in this rabbit, this late serum had a



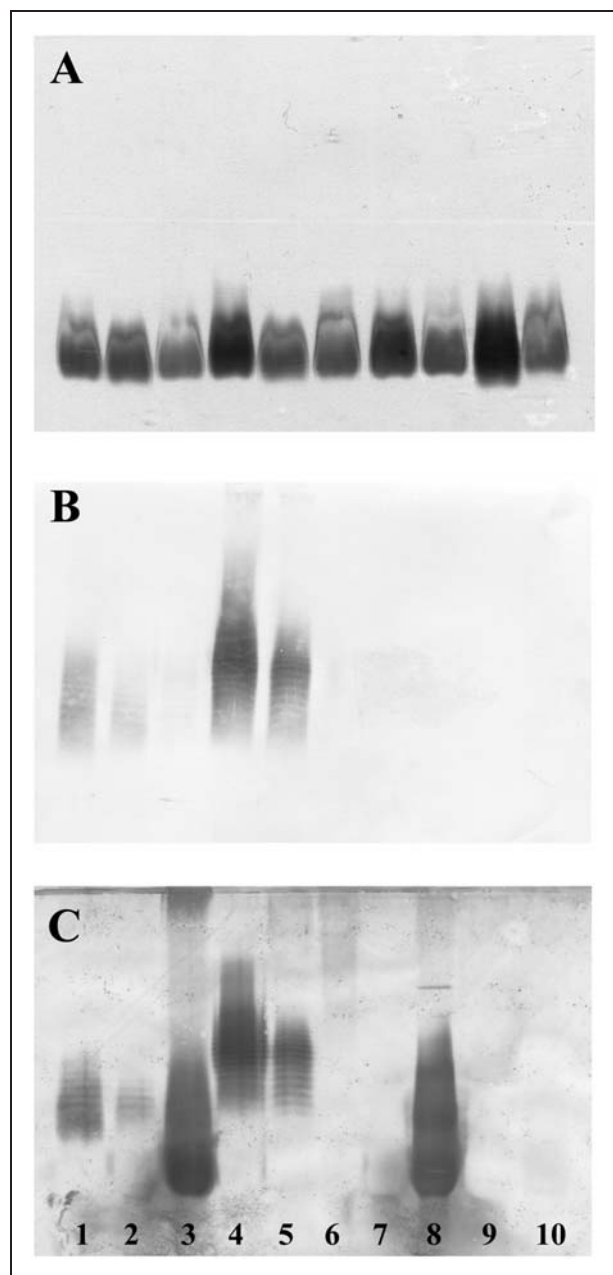
**Figure 4.** Western blot after SDS-PAGE of *E. coli* LPS (20 µg each) strains F470 (R1), F576 (R2), F653 (R3), F2513 (R4), and W3110 (K-12) applied to lanes 1 to 5, respectively, and *K. pneumoniae* i28/94 (200 µg) applied to lanes 6 and 7. Lanes 1 to 6 were immunostained with serum (diluted 1:100) of rabbit 437 taken 576 d after the first injection and lane 7 was stained with 5 µg/ml ECA-specific mAb 898.

substantially increased activity of antibodies binding smooth and rough LPS. The final serum, which was collected on day 728 after a booster injection on day 718, did not show any further increase compared to that taken on day 508.

Finally, two sera (K437/day 636 and K438/day 728) were titrated in Western blots using *E. coli* O111 LPS. As depicted in Figure 9, the sera had an exceptional high activity with titers of more than 1:50,000. This held true for the reactivity with the low (rough) and the high (smooth) molecular mass fractions of the LPS.

The binding observed in Western blots after SDS-PAGE was verified by ELISA where the homologous reaction with mAb S81-19 yielded titers of 1 to 2 millions (Figure 10A and D), whereas the titer to immobilized *E. coli* R3 (Figure 10B, E) and O111 LPS (Figure 10C, and F) was three orders of magnitude lower.

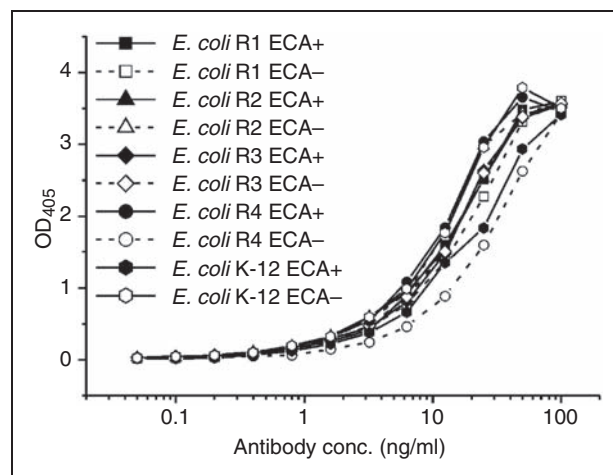




**Figure 5.** Silver-stained SDS-PAGE (A) and Western Blot after immunostaining with the ECA specific mAb 898 (1 ng/ml, B) or rabbit-antiserum K437 (1:100) taken at day 576 (C). Lanes 1 to 5 were loaded with LPS of *Escherichia coli* F470 (R1), F576 (R2) F653 (R3), F2513 (R4), and W3110 (K-12), respectively. Lanes 6-10 were loaded with the respective LPS of mutants unable to synthesize ECA. For silver staining and western blots the amount of LPS loaded per lane was 2  $\mu$ g (A), 10  $\mu$ g (B) and 20  $\mu$ g (C).

#### Neutralizing activity of anti-anti-idiotypic antisera for the induction of TNF- $\alpha$ by smooth and rough *E. coli* LPS

Finally, we determined the endotoxin neutralizing capacity of the anti-anti-idiotypic antibodies. Therefore, human MNC were stimulated with a

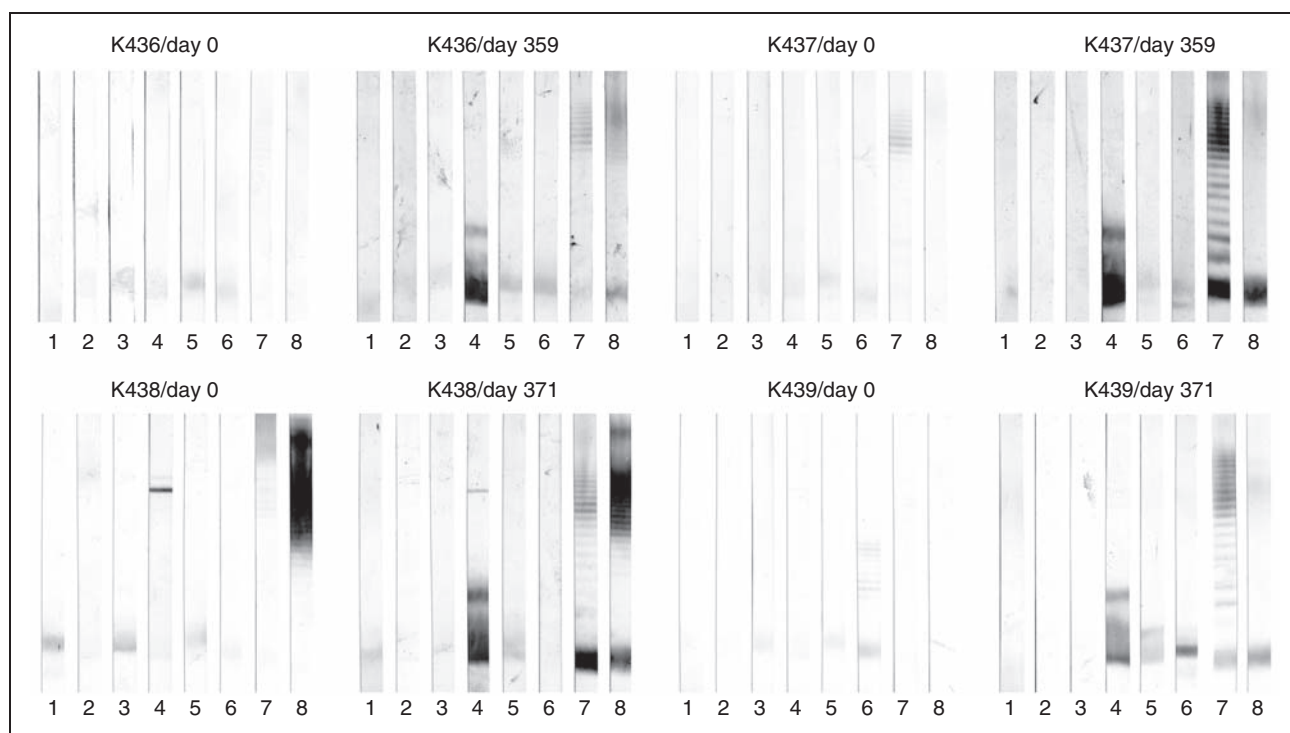


**Figure 6.** Comparison of mAb WNI 222-5 binding to 20 ng/cup immobilized LPS of ECA+ and ECA- *Escherichia coli* strains of core types R1 to R4 and K-12 in ELISA.

constant amount of *E. coli* R3, O111 or O15 LPS in the absence, or presence of, increasing amounts of isolated rabbit IgG after immunization with the anti-idiotypic mAb S81-19. The TNF- $\alpha$  release, induced by incubation with LPS from either *E. coli* R3 or O111, was strongly inhibited by the isolated rabbit IgG [400  $\mu$ g/ml] from two different animals (K437, K436), ranging from 71 to 93% (Figure 11A). This inhibition was specific, as neither isolated IgG from a hyperimmune serum (K109/d122) against an unrelated antigen nor the preimmune serum of rabbit K437 (K437/d0) showed any substantial inhibition when used at the same concentration. The capacity of the rabbit IgG to neutralize LPS developed over a long period of time. It was already above 50% after 286 d; however, a further increase of 13-17% could be detected with both sera from day 632 (Figure 11B).

## Discussion

Anti-idiotypic antibodies are regarded as potentially useful vaccines for the prevention of a variety of infectious and non-infectious human diseases.<sup>26,39</sup> The attraction of anti-idiotypic antibodies arises from the observation that they can serve as carbohydrate surrogates for immunization and offer a principal way to replace T-cell independent carbohydrate immunogens by T-cell dependant protein or peptide antigens. As yet, little is known about this phenomenon at the structural level; however, it can only be understood if a complete three-dimensional shape complementarity of the interacting surfaces is not a necessity for this concept to be successful. Indeed, a structural comparison of antibody SYA/J6 complexed with a carbohydrate oligosaccharide antigen of *Shigella flexneri* Y or a



**Figure 7.** Reactivity in Western blot of preimmune (left panel) versus hyperimmune sera (right panel) from four rabbits immunized with S81-19. The LPS used are 1, *E. coli* J-5; 2, *E. coli* R1; 3, *E. coli* R2; 4, *E. coli* R3; 5, *E. coli* R4; 6, *E. coli* K-12; 7, *E. coli* O111; 8, *E. coli* O15. Each stripe contained 4  $\mu$ g of LPS separated by SDS-PAGE and blotted onto PVDF membranes. Sera were diluted 1:100.

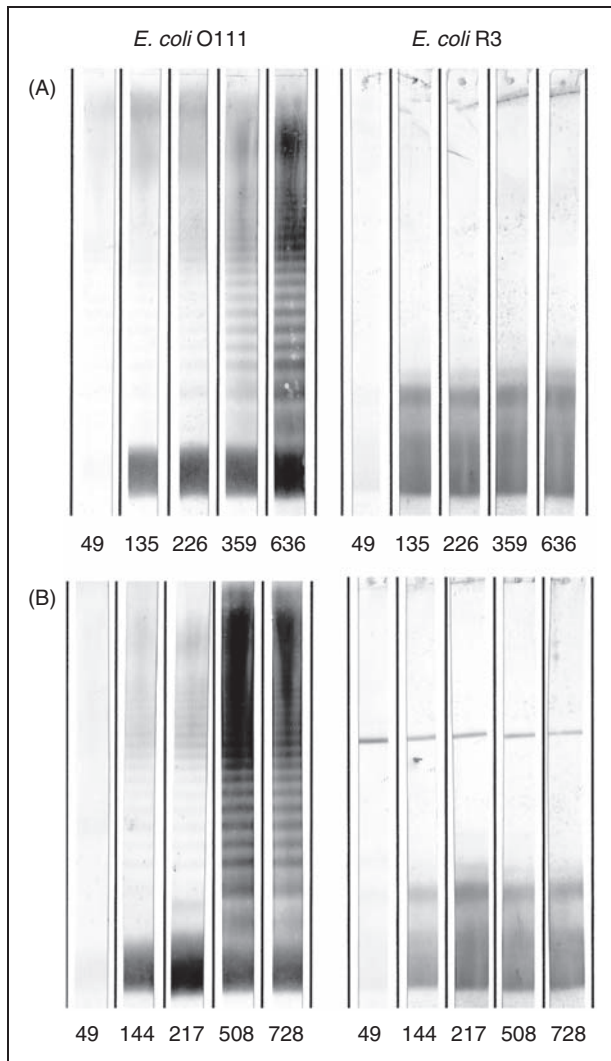
peptide mimetic, showed that despite substantial differences in the mode of recognition, a partial structural mimicry may exist which is sufficient to obtain a functional mimicry.<sup>31,32</sup> A similar observation has been made for a 21-mer peptide binding to the HIV-1 neutralizing antibody 2G12, also binding with high affinity to clustered high mannose structures on gp120.<sup>62</sup> However, it is clear that general conclusions for the understanding of molecular mimicry cannot yet be drawn, and from a functional point of view every antibody-antigen pair will certainly display its own characteristics leading to high affinity binding.

In our study, we investigated whether it would be possible to obtain anti-idiotypic antibodies (Ab2) against the broadly cross-reactive and LPS-neutralizing mAb WN1 222-5 (Ab1) and evaluated whether the main beneficial biological properties of mAb WN1 222-5, i.e. recognition of the core oligosaccharide in the presence of the O-polysaccharide, serotype cross-reactivity and neutralization of LPS can be transferred to a polyclonal immune response (Ab3) by immunization of a heterologous host with an anti-idiotypic antibody (Ab2).

We showed that it is possible to obtain anti-idiotypic antibodies against the mouse mAb WN1 222-5 in principle. Despite the fact that high titers were achieved upon immunization with the native mAb WN1 222-5, only immunization after chemical modification by

glutaraldehyde cross-linking gave rise to an anti-idiotypic antibody, mAb S81-19, which was able to inhibit the binding of mAb WN1 222-5 to several carbohydrate ligands derived from *E. coli* and *Salmonella* LPS (Table 3). As could be expected, there was no difference if the antigen was presented as LPS or neoglycoconjugate, and the binding to all core types was inhibited by similar concentrations of mAb S81-19.

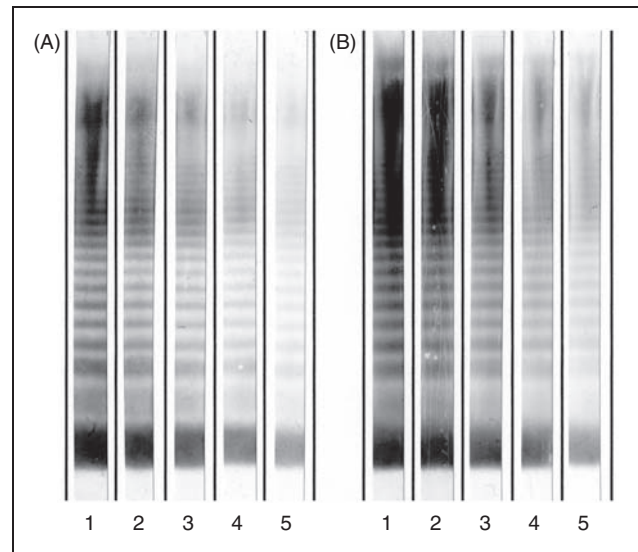
Immunization of rabbits with IgG and F(ab)<sub>2</sub> or F(ab)<sub>2</sub> only of S81-19 then yielded polyclonal antisera that contained antibodies against LPS. While all rabbits responded qualitatively in a similar fashion, there were differences in the strength of the antibody immune response measured as the ability of the serum to stain LPS on blots or bind LPS in ELISA which may have been as a result of the generation of antibodies differing in affinities or quantitative differences in antibody serum concentrations. Titers of *E. coli* R3 LPS-reactive antibodies were in the range of 1:400 to 1:1600 (Figure 10). Unlike the broadly cross-reactive properties of the mAb WN1 222-5, antibodies in the sera were predominantly directed against LPS of the R3 core type and, thus, strongly stained LPS from the *E. coli* rough mutant F653 and smooth *E. coli* O111 and O15 (Figures 5C and 7), but not against the mutant *E. coli* J-5 which contains a truncated R3 core-OS.<sup>63</sup> Despite the presence of a weak J-5 reactivity in the preimmune



**Figure 8.** Time-course of the development of anti-anti-idiotypic antibodies in sera from rabbits immunized with S81-19. A, rabbit K437; B, K438. Lipopolysaccharide of *E. coli* O111 or *E. coli* F653 (R3 core type) were separated by SDS-PAGE and blotted onto PVDF membrane; each stripe contained 8  $\mu$ g of *E. coli* O111 smooth LPS (left panel) or 4  $\mu$ g of *E. coli* F653 rough LPS (right panel). Days after immunization are indicated for each stripe. Sera were diluted 1:100.

serum of rabbit K438, immunization with S81-19 led to a strong induction of the R3 specific immune response only, without enhancement of the J-5 reactivity. While this excluded a polyclonal stimulation by immunization with the anti-idiotypic antibody or the adjuvants, it also showed a somewhat different specificity of the induced antibodies as compared to mAb WN1 222-5.<sup>25</sup> Our data (Figure 6) and previous studies<sup>25</sup> have shown that the affinity of mAb WN1 222-5 for the R3 LPS is not higher as compared to other core types and affinity differences, thus not explaining the induction of specificity for the R3 core-type only.

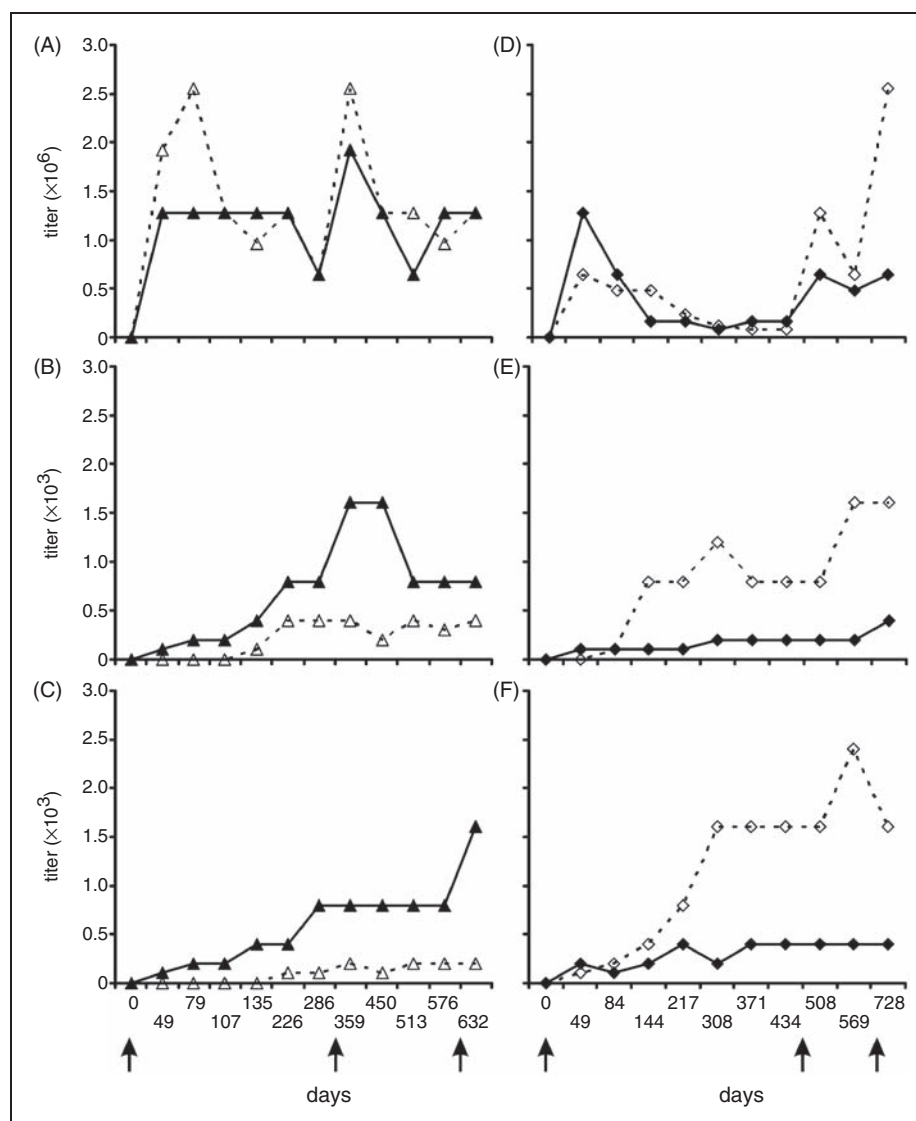
In the anti-anti-idiotypic antisera we have observed antibodies with a specificity so far not understood.



**Figure 9.** Titration of anti-anti-idiotypic antisera from rabbits immunized with mAb S81-19. A, rabbit K437/day 636; B, K438/day 728. Lipopolysaccharide of *E. coli* O111 was separated by SDS-PAGE and blotted onto PVDF membrane; each stripe contained 8  $\mu$ g of LPS. Serum dilutions are: 1, 1:200; 2, 1:800; 3, 1:3,200; 4, 1:12,800; 5, 1:51,200, lane 1 to 5, respectively.

These antibodies bind to core-attached ECA as present in *E. coli*, but not to ECA bound to phosphatidylglycerol as present in *K. pneumoniae* (Figure 4). The only available explanation for this observation is the recognition of a conformational epitope within the LPS core-OS which is formed or exposed upon attachment of either the ECA polysaccharide or the R3 outer core. It is so far unknown how the ECA polysaccharide is attached to the different *E. coli* core types and, therefore, this result cannot yet be fully interpreted at the structural level.

The observations may be explained in three principal ways: first, it may be that anti-R3 LPS specific antibodies that are somehow related to the cross-reactive mAb WN1 222-5 by sharing idiotypic markers have been predominantly induced by S81-19 immunization; second, the induced R3-specific antibodies bind to an epitope formed by parts of the inner and outer core oligosaccharides, like WN1 222-5 does, but differ from the latter in being more dependent on the outer core structure, possibly as a result of different variable domain of antibody light chain (VL) or variable domain of antibody heavy chain (VH) usage; and third, the induced antibodies bind the same epitope, like WN1 222-5, but they may be of lower affinity because of an incomplete mimicry by S81-19, therefore leading to a higher sensitivity towards a certain conformation imposed on the inner core by the outer core oligosaccharide. The latter assumption would also provide an explanation for the binding of the anti-anti-idiotypic antisera to ECA<sub>LPS</sub> of *E. coli*. Whereas mAb WN1 222-5 binding is less dependent on the



**Figure 10.** Titer of anti-anti-idiotypic rabbit immune sera binding to immobilized mAb S81-19 (A and D), immobilized LPS of *E. coli* F653 (B and E), and *E. coli* O111 (C and F) determined by ELISA. Shown on the left (A-C) are sera from rabbit 436 (dashed) and 437 (solid) and on the right (D-F) sera from rabbit 438 (dashed) and 439 (solid) taken at indicated days after the first injection. Starting dilutions were 1:500 for the homologous S81-19 reaction and 1:100 in case of LPS as antigen. The immune response was followed over a time course of up to 728 d. Days at which booster injections were applied are indicated by arrows. Note the different y-axis scales for A, D and B, C, E, F, respectively. Measurements were performed as duplicates.

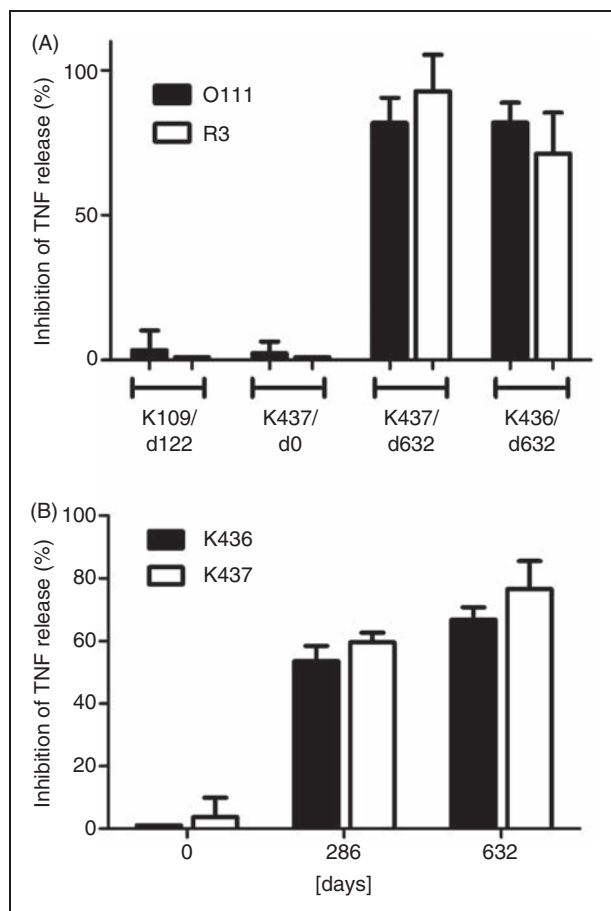
outer core structure, the anti-anti-idiotypic antibodies recognize a conformation only adopted when the R3 core is present or when the ECA polysaccharide is attached to any of the other outer core types. We have previously observed an increase in affinity of mAb WN1 222-5 for oligosaccharides that contain an outer core in comparison to core-OS devoid of outer core sugars,<sup>25</sup> indicating some conformational dependence.

In accordance with the observed binding specificities, TNF- $\alpha$  release assays using human LPS-stimulated MNC showed that the rabbit immune sera neutralized *E. coli* R3 and O111 LPS in a specific manner and that the neutralizing capacity increased over time therefore

correlating with the antibody titer (Figure 11). It is important to note that rabbits 436 and 437 received their first injection five months earlier than rabbits 438 and 439. Nevertheless, all rabbits showed a significant increase of LPS-specific anti-anti-idiotypic antibodies after approximately 250 d, albeit with different absolute titers.

Our results showed that mAb S81-19 was, in part, able to mimic the structure of the natural carbohydrate ligand of mAb WN1 222-5. Anti-anti-idiotypic antisera could be obtained which bound LPS in the presence of an O-PS and importantly reduced the release of TNF- $\alpha$ , one of the key proinflammatory cytokines in the





**Figure 11.** Inhibition of TNF- $\alpha$  release from peripheral human mononuclear cells stimulated with LPS of *E. coli* F653 or O111 by isolated IgG of rabbit sera obtained after immunization with anti-idiotypic mAb S81-19. The upper panel (A) shows the specificity of the neutralization; the hyperimmune rabbit serum K109 against an unrelated antigen (LPS of *E. coli* Re mutant strain F515) and the preimmune serum (day 0) from rabbit K437 have no neutralizing effect whereas the late sera (day 632) from rabbits K437 and K436 show up to 90% inhibition. The lower panel (B) shows the development of neutralizing activity against TNF induction by LPS of *E. coli* O15 over the observed period of time. Inhibitory capacity is calculated from the TNF-inducing activity of 1 ng/l LPS mixed with 400  $\mu$ g/ml IgG vs. 1 ng/ml LPS alone.

development of septic shock initiated by endotoxin. The observation that the anti-anti-idiotypic antibodies developed over such an unusual long period of time has two implications: first, anti-anti-idiotypic antibodies may, in general, develop with a different time course than the normal immune response and it may therefore be necessary to wait longer to see whether such antibodies are formed; and second, while such a long time is clearly impractical for clinical use, changing adjuvants or the immunization regimen may allow this problem to be overcome in the future. It is important to note, however, that WN1-222-5-type antibodies have never been obtained by immunization with a single

carbohydrate immunogen and that mAb WN1 222-5 was obtained after immunization with a mixture of LPS containing several *E. coli* core types.<sup>22</sup> While the cross-reactive properties of the WN1 222-5 antibody could not be retained in this approach, the mere observation of neutralizing LPS core-specific antibodies represents a promising starting point for further development. In cooperation with Stephen Evans (University of Victoria, BC, Canada) we have obtained cocrystals of mAb WN1 222-5 in complex with LPS core-OS ligands (manuscript in preparation) to understand the unique cross-reactive properties of WN1 222-5 at the structural level and have begun cocrystallization studies with Fab S81-19 aimed at elucidating the reason for incomplete structural mimicry. This approach will provide a basis for a rational development of antigens able to induce WN1 222-5 type antibodies for use in the fight against Gram-negative sepsis.

### Acknowledgements

This work was financially supported by the Deutsche Forschungsgemeinschaft [grant number SFB470, C1]. We thank U. Agge, A. Baier, I. v. Cube, I. Goroncy, D. Meyer, C. Schneider and V. Susott for technical assistance.

### References

- Cohen J. The immunopathogenesis of sepsis. *Nature* 2002; 420: 885–891.
- Opal SM. The host response to endotoxin, antilipopolysaccharide strategies, and the management of severe sepsis. *Int J Med Microbiol* 2007; 297: 365–377.
- Alexander C and Rietschel ET. Bacterial lipopolysaccharides and innate immunity. *J Endotoxin Res* 2001; 7: 167–202.
- Angus DC, Linde-Zwirble WT, Lidicker J, Clermont G, Carcillo J and Pinsky MR. Epidemiology of severe sepsis in the United States: analysis of incidence, outcome, and associated costs of care. *Crit Care Med* 2001; 29: 1303–1310.
- Riedemann NC, Guo RF and Ward PA. Novel strategies for the treatment of sepsis. *Nat Med* 2003; 9: 517–524.
- Ianaro A, Tersigni M and D'Acquisto F. New insight in LPS antagonist. *Mini Rev Med Chem* 2009; 9: 306–317.
- Holst O and Müller-Loennies S. Microbial Polysaccharide Structures. In: Kamerling JP (ed.) *Comprehensive Glycoscience*. Oxford: Elsevier, 2007, pp.123–179.
- Rietschel ET, Kirikae T, Schade FU, et al. Bacterial endotoxin: molecular relationships of structure to activity and function. *FASEB J* 1994; 8: 217–225.
- Kuhn HM, Meier-Dieter U and Mayer H. ECA, the enterobacterial common antigen. *FEMS Microbiol Rev* 1988; 4: 195–222.
- Duda KA, Duda KT, Beczala A, Kasperkiewicz K, Radziejewska-Lebrecht J and Skurnik M. ECA-immunogenicity of *Proteus mirabilis* strains. *Arch Immunol Ther Exp (Warsz)* 2009; 57: 147–151.
- Radziejewska-Lebrecht J, Kasperkiewicz K, Skurnik M, et al. ECA-antibodies in antisera against R mutants of *Yersinia enterocolitica* O:3. *Adv Exp Med Biol* 2003; 529: 215–218.
- Dell A, Oates J, Lugowski C, Romanowska E, Kenne L and Lindberg B. The enterobacterial common-antigen, a cyclic polysaccharide. *Carbohydr Res* 1984; 133: 95–104.
- Erbel PJ, Barr K, Gao N, Gerwig GJ, Rick PD and Gardner KH. Identification and biosynthesis of cyclic enterobacterial common antigen in *Escherichia coli*. *J Bacteriol* 2003; 185: 1995–2004.

14. Kajimura J, Rahman A and Rick PD. Assembly of cyclic enterobacterial common antigen in *Escherichia coli* K-12. *J Bacteriol* 2005; 187: 6917–6927.
15. Albertson TE, Panacek EA, MacArthur RD, et al. Multicenter evaluation of a human monoclonal antibody to *Enterobacteriaceae* common antigen in patients with Gram-negative sepsis. *Crit Care Med* 2003; 31: 419–427.
16. Müller-Loennies S, Brade L and Brade H. Neutralizing and cross-reactive antibodies against enterobacterial lipopolysaccharide. *Int J of Med Microbiol* 2007; 297: 321–340.
17. Cross AS, Opal SM, Bhattacharjee AK, et al. Immunotherapy of sepsis: flawed concept or faulty implementation? *Vaccine* 1999; 17(Suppl 2): S13–S21.
18. Opal SM and Cross AS. Clinical trials for severe sepsis. *Past failures, and future hopes*. *Infect Dis Clin North Am* 1999; 13: 285–297.
19. Müller-Loennies S, Di Padova FE, Brade L, Heumann D and Rietschel ET. Conserved epitopes in bacterial lipopolysaccharides and cross-reactive antibodies in the treatment of endotoxemia and gram-negative septic shock. In: Andrew PW, Oyston P, Smith GL and Stewart-Tull DE (eds) *Fighting Infection in the 21st Century*. Oxford: Blackwell Science Ltd, 2000, pp.143–178.
20. Cross AS, Opal S, Cook P, Drabick J and Bhattacharjee A. Development of an anti-core lipopolysaccharide vaccine for the prevention and treatment of sepsis. *Vaccine* 2004; 22: 812–817.
21. Gregory SH, Chen WH, Mott S, et al. Detoxified endotoxin vaccine (J5dLPS/OMP) protects mice against lethal respiratory challenge with *Francisella tularensis* SchuS4. *Vaccine* 2010; 28: 2908–2915.
22. Di Padova FE, Brade H, Barclay GR, et al. A broadly cross-protective monoclonal antibody binding to *Escherichia coli* and *Salmonella* lipopolysaccharides. *Infect Immun* 1993; 61: 3863–3872.
23. Di Padova FE, Mikol V, Barclay GR, Poxton IR and Rietschel ETH. Anti-lipopolysaccharide core antibodies. *Prog Clin Biol Res* 1994; 388: 85–94.
24. Bahrami S, Yao YM, Leichtfried G, Redl H, Schlag G and Di Padova FE. Monoclonal antibody to endotoxin attenuates hemorrhage-induced lung injury and mortality in rats. *Crit Care Med* 1997; 25: 1030–1036.
25. Müller-Loennies S, Brade L, MacKenzie CR, Di Padova F and Brade H. Identification of a cross-reactive epitope widely present in lipopolysaccharide from Enterobacteria and recognized by the crossprotective monoclonal antibody WN1 222-5. *J Biol Chem* 2003; 278: 25618–25627.
26. Köhler H, Kaveri S, Kieber-Emmons T, Morrow WJ, Muller S and Raychaudhuri S. Idiotypic networks and nature of molecular mimicry: an overview. *Methods Enzymol* 1989; 178: 3–35.
27. Stein KE and Soderstrom T. Neonatal administration of idiotype or antiidiotype primes for protection against *Escherichia coli* K13 infection in mice. *J Exp Med* 1984; 160: 1001–1011.
28. Monafa WJ, Greenspan NS, Cebra-Thomas JA and Davie JM. Modulation of the murine immune response to streptococcal group A carbohydrate by immunization with monoclonal anti-idiotope. *J Immunol* 1987; 139: 2702–2707.
29. Hastings A, Morrison SL, Kanda S, Saxton RE and Irie RF. Production and characterization of a murine/human chimeric anti-idiotype antibody that mimics ganglioside. *Cancer Res* 1992; 52: 1681–1686.
30. Borrelli S, Hossany RB and Pinto BM. Immunological evidence for functional rather than structural mimicry by a *Shigella flexneri* Y polysaccharide-mimetic peptide. *Clin Vaccine Immunol* 2008; 15: 1106–1114.
31. Harris SL, Craig L, Mehroke JS, et al. Exploring the basis of peptide-carbohydrate crossreactivity: evidence for discrimination by peptides between closely related anti-carbohydrate antibodies. *Proc Natl Acad Sci USA* 1997; 94: 2454–2459.
32. Vyas NK, Vyas MN, Chervenak MC, Bundle DR, Pinto BM and Quijcho FA. Structural basis of peptide-carbohydrate mimicry in an antibody-combining site. *Proc Natl Acad Sci U S A* 2003; 100: 15023–15028.
33. Pashov A, Monzavi-Karbassi B and Kieber-Emmons T. Immune surveillance and immunotherapy: lessons from carbohydrate mimotopes. *Vaccine* 2009; 27: 3405–3415.
34. Pashov A, Monzavi-Karbassi B, Raghava G and Kieber-Emmons T. Peptide mimotopes as prototypic templates of broad-spectrum surrogates of carbohydrate antigens for cancer vaccination. *Crit Rev Immunol* 2007; 27: 247–270.
35. Clement MJ, Fortune A, Phalipon A, et al. Toward a better understanding of the basis of the molecular mimicry of polysaccharide antigens by peptides: the example of *Shigella flexneri* 5a. *J Biol Chem* 2006; 281: 2317–2332.
36. Johnson MA and Pinto BM. NMR spectroscopic and molecular modeling studies of protein-carbohydrate and protein-peptide interactions. *Carbohydr Res* 2004; 339: 907–928.
37. Johnson MA and Pinto BM. Saturation-transfer difference NMR studies for the epitope mapping of a carbohydrate-mimetic peptide recognized by an anti-carbohydrate antibody. *Bioorg Med Chem* 2004; 12: 295–300.
38. Kieber-Emmons T. Peptide mimotopes of carbohydrate antigens. *Immunol Res* 1998; 17: 95–108.
39. Meloan RH, Puijk WC and Slootstra JW. Mimotopes: realization of an unlikely concept. *J Mol Recognit* 2000; 13: 352–359.
40. Wu Y, Zhang Q, Sales D, Bianco AE and Craig A. Vaccination with peptide mimotopes produces antibodies recognizing bacterial capsular polysaccharides. *Vaccine* 2010; 28: 6425–6435.
41. Kato T, Takazoe I and Okuda K. Protection of mice against the lethal toxicity of a lipopolysaccharide (LPS) by immunization with anti-idiotype antibody to a monoclonal antibody to lipid A from *Eikenella corrodens* LPS. *Infect Immun* 1990; 58: 416–420.
42. Klaerner HG, Dahlberg PS, Acton RD, et al. Immunization with antibodies that mimic LPS protects against gram negative bacterial sepsis. *J Surg Res* 1997; 69: 249–254.
43. Cornelissen JJ, Maassen K, van Emst L, et al. Anti-idiotypic immunization provides protection against lethal endotoxaemia in BALB/c mice. *Immunology* 1993; 79: 673–680.
44. Field S, Pollack M and Morrison DC. Development of an anti-idiotype monoclonal antibody mimicking the structure of lipopolysaccharide (LPS) inner-core determinants. *Microb Pathog* 1993; 15: 103–120.
45. Field SK and Morrison DC. An anti-idiotype antibody which mimics the inner-core region of lipopolysaccharide protects mice against a lethal challenge with endotoxin. *Infect Immun* 1994; 62: 3994–3999.
46. Jacobs JL, Gold JW, Murray HW, Roberts RB and Armstrong D. *Salmonella* infections in patients with the acquired immunodeficiency syndrome. *Ann Intern Med* 1985; 102: 186–188.
47. Clumeck N, Mascart-Lemone F, de MJ, Brenez D and Marcelis L. Acquired immune deficiency syndrome in Black Africans. *Lancet* 1983; 1: 642.
48. MacLennan CA, Gondwe EN, Msefula CL, et al. The neglected role of antibody in protection against bacteremia caused by nontyphoidal strains of *Salmonella* in African children. *J Clin Invest* 2008; 118: 1553–1562.
49. MacLennan CA, Gilchrist JJ, Gordon MA, et al. Dysregulated humoral immunity to nontyphoidal *Salmonella* in HIV-infected African adults. *Science* 2010; 328: 508–512.
50. Vinogradov EV, Van Der DK, Thomas-Oates JE, Meshkov S, Brade H and Holst O. The structures of the carbohydrate backbones of the lipopolysaccharides from *Escherichia coli* rough mutants F470 (R1 core type) and F576 (R2 core type). *Eur J Biochem* 1999; 261: 629–639.
51. Müller-Loennies S, Lindner B and Brade H. Structural analysis of deacylated lipopolysaccharide of *Escherichia coli* strains 2513

- (R4 core-type) and F653 (R3 core-type). *Eur J Biochem* 2002; 269: 5982–5991.
52. Müller-Loennies S, Lindner B and Brade H. Structural analysis of oligosaccharides from lipopolysaccharide (LPS) of *Escherichia coli* K12 strain W3100 reveals a link between inner and outer core LPS biosynthesis. *J Biol Chem* 2003; 278: 34090–34101.
  53. Brade L, Holst O and Brade H. An artificial glycoconjugate containing the bisphosphorylated glucosamine disaccharide backbone of lipid A binds lipid A monoclonal antibodies. *Infect Immun* 1993; 61: 4514–4517.
  54. Daugharty H, Hopper JE, MacDonald AB and Nisonoff A. Quantitative investigations of idiotypic antibodies. I. Analysis of precipitating antibody populations. *J Exp Med* 1969; 130: 1047–1062.
  55. Stähli C, Staehelin T, Miggiano V. Spleen cell analysis and optimal immunization for high-frequency production of specific hybridomas. John, J. Langone and Helen, V. Immunochemical Techniques Part E: Monoclonal Antibodies and General Immunoassay Methods. Vol 92, 26–36. 1983. Academic Press. *Methods in Enzymology*.
  56. Parham P. On the fragmentation of monoclonal IgG1, IgG2a, and IgG2b from BALB/c mice. *J Immunol* 1983; 131: 2895–2902.
  57. Tsai CM and Frasch CE. A sensitive silver stain for detecting lipopolysaccharides in polyacrylamide gels. *Anal Biochem* 1982; 119: 115–119.
  58. Vinogradov EV, Pantophlet R, Dijkshoorn L, Brade L, Holst O and Brade H. Structural and serological characterisation of two O-specific polysaccharides of *Acinetobacter*. *Eur J Biochem* 1996; 239: 602–610.
  59. Böyum A. Isolation of mononuclear cells and granulocytes from human blood. Isolation of mononuclear cells by one centrifugation, and of granulocytes by combining centrifugation and sedimentation at 1 g. *Scand J Clin Lab Invest Suppl* 1968; 97: 77–89.
  60. Holst O and Brade H. Isolation and structural analysis of the tetrasaccharide 3-deoxy-5-O-[3-O- (3-O- $\alpha$ -D-glucopyranosyl-L-glycero- $\alpha$ -D-manno-heptopyranosyl)-L-glycero- $\alpha$ -D-manno-heptopyranosyl]-D-manno-octulosonic acid from the core region of the lipopolysaccharide of *Salmonella minnesota* strain R5 (rough mutant chemotype RcP-). *Carbohydr Res* 1993; 245: 159–163.
  61. Peters H, Jurs M, Jann B, Jann K, Timmis KN and Bitter-Suermann D. Monoclonal antibodies to enterobacterial common antigen and to *Escherichia coli* lipopolysaccharide outer core: demonstration of an antigenic determinant shared by enterobacterial common antigen and *E. coli* K5 capsular polysaccharide. *Infect Immun* 1985; 50: 459–466.
  62. Menendez A, Calarese DA, Stanfield RL, et al. A peptide inhibitor of HIV-1 neutralizing antibody 2G12 is not a structural mimic of the natural carbohydrate epitope on gp120. *FASEB J* 2008; 22: 1380–1392.
  63. Müller-Loennies S, Holst O, Lindner B and Brade H. Isolation and structural analysis of phosphorylated oligosaccharides obtained from *Escherichia coli* J-5 lipopolysaccharide. *Eur J Biochem* 1999; 260: 235–249.