

This is an Accepted Manuscript version of the following article, accepted for publication in **Road Materials and Pavement Design**.
Postprint of: Kosińska J., Boczkaj G., Gałęzowska G., Powysocka J., Przyjazny A., Kamiński M., Determination of modifier contents in polymer-modified bitumens and in samples collected from the roads using high performance gel permeation/size exclusion chromatography, *Road Materials and Pavement Design*, Vol. 17, Iss. 3 (2016), pp.547-562, DOI: [10.1080/14680629.2015.1094398](https://doi.org/10.1080/14680629.2015.1094398)
It is deposited under the terms of the Creative Commons Attribution-NonCommercial License (<http://creativecommons.org/licenses/by-nc/4.0/>), which permits non-commercial re-use, distribution, and reproduction in any medium, provided the original work is properly cited.

Determination of modifier contents in polymer-modified bitumens and in samples collected from the roads using high performance gel permeation/size exclusion chromatography

Journal:	<i>Road Materials and Pavement Design</i>
Manuscript ID:	RMPD-14-12-27.R1
Manuscript Type:	Original Scientific Paper
Keywords:	polymer modifiers, styrene-butadiene-styrene (SBS), road bitumen, size exclusion chromatography (GPC/SEC), Fourier transform infrared spectroscopy (FTIR), thin layer chromatography coupled with flame ionization detection (TLC-FID)

SCHOLARONE™
Manuscripts

1
2
3
4
5
6
7
8
9
10
11
12
13
14
15
16
17
18
19
20
21
22
23
24
25
26
27
28
29
30
31
32
33
34
35
36
37
38
39
40
41
42
43
44
45
46
47
48
49
50
51
52
53
54
55
56
57
58
59
60

Determination of modifier contents in polymer- modified bitumens and in samples collected from the roads using high performance gel permeation/size exclusion chromatography

Abstract

This paper describes application of high performance gel permeation/size exclusion chromatography (HP-GPC/SEC) for the determination of content of polymer modifiers in modified road bitumens. The obtained results were compared with the measurements based on the procedure recommended by the American Association of State Highway and Transportation Officials, which employs Fourier transform mid-infrared spectroscopy (mid-IR FTIR). Two most commonly used modifiers of paving bitumens, namely styrene-butadiene-styrene (SBS) and styrene-butadiene (SB) copolymers as well as modified bitumens sampled from various streets in the city of Gdansk (Poland) were investigated. This work confirmed the ability of GPC/SEC to distinguish modified road bitumens from unmodified ones. The developed methodology is particularly important in quality control of modified bitumens, as well as in arbitration analysis when there is a suspicion that the amount of modifier added to bitumen was lowered or that the material does not meet the specifications concerning the modifier content.

1
2
3
4
5
6
7
8
9
10
Keywords: polymer modifiers; styrene-butadiene-styrene (SBS); road bitumen; size exclusion chromatography (GPC/SEC); Fourier transform infrared spectroscopy (FTIR); thin layer chromatography coupled with flame ionization detection (TLC-FID)

11 **1. Introduction**

12
13
14
15
16
17
18
19
20
21
22
23
24
25
26
27
28
29
30
31
Bitumens belong to the group of thermoplastic and viscoelastic materials. Heated bitumens become soft and undergo a gradual transition from a solid to a liquid, while cooling turns them into a brittle-elastic solid. At intermediate temperatures bitumens exhibit the properties of both a viscous liquid and an elastic solid. The properties of road pavements called asphalts (a mixture of bitumen and aggregates) vary as a function of temperature and duration of use. Therefore, the range of viscoelastic properties of a given bitumen type should be properly matched with the expected temperatures of the bitumen in order to retain its rheological characteristics (Loeber, Muller, Morel & Sutton, 1998).

32
33
34
35
36
37
38
39
40
41
42
43
44
45
46
47
48
49
50
51
52
53
54
55
56
57
58
59
60
The climate of Poland has a negative impact on paved surfaces. Traditional asphalts do not fulfill all the expectations of road users. Ruts caused by slowly moving trucks during hot summer months and transverse cracks formed as a result of abrupt temperature drops in winter are a real issue for drivers. Furthermore, asphalt undergoes aging processes when exposed to oxygen, heat and ultraviolet light, resulting in changes of physical properties and chemical structure of asphalts (Lamontagne, Dumas, Mouillet & Kister, 2001; Lu & Isacson, 1998; Ruan, Davison & Glover, 2003; Fernandes, Forte & Leite, 2008; Wang, Razaqpur, Xing & Chen, 2015), as well as, polymer-modifiers added to bitumen (Zhang, Jia, Yu & Xue, 2013; Polacco, Biondi, Stastna, Vlachovicova & Zanzotto, 2004; Airey, 2004). Consequently, the ideal bitumen should possess both a high relative stiffness at high temperatures (summer) to reduce rutting and shoving and an

1
2
3 increased adhesion between bitumen and aggregates in the presence of moisture to reduce
4 stripping (Roberts et al.,1996).
5
6

7
8 The most common method to prevent the aforementioned damage to paved surfaces is the
9 replacement of traditional bitumens with polymer-modified bitumens, which changes the
10 interfacial properties of the primary bituminous material (Błażejowski & Styk, 2004). The aim of
11 bitumen modification is to improve the useful properties of the mixtures of mineral aggregates,
12 and to extend the expected service life of paved surfaces - asphalts. This requires better
13 pavement resilience to permanent deformation, cracking, aging, fatigue and the impact of
14 external factors. Methods based on increasing the angle of internal friction in the mixture of
15 bitumen and mineral aggregates, i.e. increasing the content of crushed grains and grit, and on
16 optimizing the binder content and binder consistency do not ensure all the required properties,
17 particularly in the case of increasing road traffic (Piłat & Radziszewski, 2007).
18
19
20
21
22
23
24
25
26
27
28
29
30

31
32 Polymer-modified bitumens used for paving contain a specified amount of modifier in the
33 form of polymer which was introduced into the bitumen via dedicated technological processes
34 (Błażejowski & Styk, 2004; Piłat & Radziszewski, 2007). The modification process is based on
35 crosslinked modifiers at the phase boundary. The final product has properties which improve
36 pavement resilience to rutting and cracking. Polymer-modified bitumens are mainly used for
37 paving roads exposed to high volume traffic of heavy vehicles, bridges, roundabouts and
38 intersections.
39
40
41
42
43
44
45
46
47

48 Application of polymer-modified bitumens increased the need for reliable quality control
49 procedures determining the content of modifiers in bitumens. This has become one of many tasks
50 of modern analytical chemistry dealing with the composition of complex mixtures.
51
52
53
54
55
56
57
58
59
60
61
62
63
64
65
66
67
68
69
70
71
72
73
74
75
76
77
78
79
80
81
82
83
84
85
86
87
88
89
90
91
92
93
94
95
96
97
98
99
100
101
102
103
104
105
106
107
108
109
110
111
112
113
114
115
116
117
118
119
120
121
122
123
124
125
126
127
128
129
130
131
132
133
134
135
136
137
138
139
140
141
142
143
144
145
146
147
148
149
150
151
152
153
154
155
156
157
158
159
160
161
162
163
164
165
166
167
168
169
170
171
172
173
174
175
176
177
178
179
180
181
182
183
184
185
186
187
188
189
190
191
192
193
194
195
196
197
198
199
200
201
202
203
204
205
206
207
208
209
210
211
212
213
214
215
216
217
218
219
220
221
222
223
224
225
226
227
228
229
230
231
232
233
234
235
236
237
238
239
240
241
242
243
244
245
246
247
248
249
250
251
252
253
254
255
256
257
258
259
260
261
262
263
264
265
266
267
268
269
270
271
272
273
274
275
276
277
278
279
280
281
282
283
284
285
286
287
288
289
290
291
292
293
294
295
296
297
298
299
300
301
302
303
304
305
306
307
308
309
310
311
312
313
314
315
316
317
318
319
320
321
322
323
324
325
326
327
328
329
330
331
332
333
334
335
336
337
338
339
340
341
342
343
344
345
346
347
348
349
350
351
352
353
354
355
356
357
358
359
360
361
362
363
364
365
366
367
368
369
370
371
372
373
374
375
376
377
378
379
380
381
382
383
384
385
386
387
388
389
390
391
392
393
394
395
396
397
398
399
400
401
402
403
404
405
406
407
408
409
410
411
412
413
414
415
416
417
418
419
420
421
422
423
424
425
426
427
428
429
430
431
432
433
434
435
436
437
438
439
440
441
442
443
444
445
446
447
448
449
450
451
452
453
454
455
456
457
458
459
460
461
462
463
464
465
466
467
468
469
470
471
472
473
474
475
476
477
478
479
480
481
482
483
484
485
486
487
488
489
490
491
492
493
494
495
496
497
498
499
500
501
502
503
504
505
506
507
508
509
510
511
512
513
514
515
516
517
518
519
520
521
522
523
524
525
526
527
528
529
530
531
532
533
534
535
536
537
538
539
540
541
542
543
544
545
546
547
548
549
550
551
552
553
554
555
556
557
558
559
560
561
562
563
564
565
566
567
568
569
570
571
572
573
574
575
576
577
578
579
580
581
582
583
584
585
586
587
588
589
590
591
592
593
594
595
596
597
598
599
600
601
602
603
604
605
606
607
608
609
610
611
612
613
614
615
616
617
618
619
620
621
622
623
624
625
626
627
628
629
630
631
632
633
634
635
636
637
638
639
640
641
642
643
644
645
646
647
648
649
650
651
652
653
654
655
656
657
658
659
660
661
662
663
664
665
666
667
668
669
670
671
672
673
674
675
676
677
678
679
680
681
682
683
684
685
686
687
688
689
690
691
692
693
694
695
696
697
698
699
700
701
702
703
704
705
706
707
708
709
710
711
712
713
714
715
716
717
718
719
720
721
722
723
724
725
726
727
728
729
730
731
732
733
734
735
736
737
738
739
740
741
742
743
744
745
746
747
748
749
750
751
752
753
754
755
756
757
758
759
760
761
762
763
764
765
766
767
768
769
770
771
772
773
774
775
776
777
778
779
780
781
782
783
784
785
786
787
788
789
790
791
792
793
794
795
796
797
798
799
800
801
802
803
804
805
806
807
808
809
810
811
812
813
814
815
816
817
818
819
820
821
822
823
824
825
826
827
828
829
830
831
832
833
834
835
836
837
838
839
840
841
842
843
844
845
846
847
848
849
850
851
852
853
854
855
856
857
858
859
860
861
862
863
864
865
866
867
868
869
870
871
872
873
874
875
876
877
878
879
880
881
882
883
884
885
886
887
888
889
890
891
892
893
894
895
896
897
898
899
900
901
902
903
904
905
906
907
908
909
910
911
912
913
914
915
916
917
918
919
920
921
922
923
924
925
926
927
928
929
930
931
932
933
934
935
936
937
938
939
940
941
942
943
944
945
946
947
948
949
950
951
952
953
954
955
956
957
958
959
960
961
962
963
964
965
966
967
968
969
970
971
972
973
974
975
976
977
978
979
980
981
982
983
984
985
986
987
988
989
990
991
992
993
994
995
996
997
998
999
1000

1
2
3 is the method of choice to determine low-volatility and non-volatile mixture components. The
4
5 application of liquid chromatography is particularly recommended for determining the group-
6
7 type composition of bitumens (Gudebska, 1999). Liquid chromatography can also be used for the
8
9 determination of bitumen modifiers in asphalts.
10
11

12
13 So far, a procedure using Fourier transform infrared spectroscopy (FTIR) for determining the
14
15 content of styrene-butadiene-styrene (SBS), styrene-butadiene rubber (SBR) and styrene-
16
17 butadiene (SB) copolymers in modified bitumens has been developed (AASHTO T302-05,
18
19 2007). FTIR spectroscopy is well-known technique utilized widely in asphalt technology. It can
20
21 be used to determine the presence and approximate content of polymers in an asphalt binder
22
23 (Diefenderfer, 2006), to evaluate oxidation levels in bitumens and polymer-modified bitumens
24
25 (Yut & Zofka, 2011). The FTIR allows for comparison of different types of bituminous samples
26
27 (Zhang, Wang, Wu, Sun & Wang, 2009; Wu, Zeng, Ou, Yu, Lu & Xu, 2010; Izquierdo, Navarro,
28
29 Martínez-Boza & Gallegos, 2012). It can be also helpful while explaining interactions occurring
30
31 between the polymer modifier and bitumen (Ramalinga Chandra Sekar, Mahendran, Vasudevan
32
33 & Velkennedy, 2015) and while investigating the aging resistance characteristics of polymer-
34
35 modified bitumens (Ouyang, Wang, Yong Zhang & Yinxi Zhang, 2006; Nivitha, Prasad &
36
37 Krishnan, 2015). Size exclusion chromatography (GPC/SEC) has also been applied for similar
38
39 analyses (Peramanu & Pruden, 1999). This is due to the fact that polymers with high molecular
40
41 weights are used as bitumen modifiers. Furthermore, GPC/SEC is a technique commonly used in
42
43 many aspects of bitumen analytics (Doh, Amirkhani & Kim, 2008; K.W. Kim, K. Kim, Doh,
44
45 & Amirkhani, 2006). Thin layer chromatography coupled with flame ionization detection
46
47 (TLC-FID) also seems to be useful for determining the modifier content. However, its major
48
49 application is determination of the group composition (Paliukaitė, Vaitkus & Zofka, 2014;
50
51
52
53
54
55
56
57
58
59
60

1
2
3 Kamiński, Gudebska, Górecki & Kartanowicz, 2003; Ecker, 2001; Masson, Price & Collins,
4
5
6 2001) – a so-called SARA (Saturates, Aromatics, Resins, Asphaltenes).
7

8 In the current Polish standard PN EN 14023, describing the classification rules for polymer-
9
10 modified bitumens, the determination of modifier content is not required (PN EN 14023, 2009).
11
12 Modified bitumens are on average 20 to 25% more expensive than traditional bitumens. Because
13
14 of that, adulteration of modified bitumens by lowering the required content of modifiers is quite
15
16 probable. Lack of monitoring of the amount of modifier used in paved surfaces makes tampering
17
18 even more likely. Liquid chromatography, especially SEC, could be used for the determination
19
20 of modifier content in bitumens. It should be noted, however, that for some purposes only highly
21
22 selective and highly orthogonal separation systems can provide a satisfactory separation of the
23
24 analytes allowing their quantitative analysis (Boczkaj, Jaszczółt, Przyjazny & Kamiński, 2013;
25
26 Gilgenast, Boczkaj, Przyjazny & Kamiński, 2011).
27
28
29
30

31 In the light of the above facts, the development of the procedure for determining modifiers in
32
33 bitumens is very important. In addition, the information about the actual amount of ground
34
35 polymer added is important from the point of view of quality control. The basic principle of
36
37 quality control concerning addition of modifiers is based on fluorescence microscopy. However,
38
39 this technique only allows assessment of the technology, but does not allow determining the
40
41 content of modifier added.
42
43
44

45 In contrast, this work provides the procedure for the determination of the content of modifier,
46
47 but does provide any information on whether the modifier occurs in a granular form.
48
49 Nevertheless, the methodology presented in this paper can be used in quality control laboratories
50
51 as well as in process analytics, as a tool for the control of modifier content in road pavements.
52
53
54
55
56
57
58
59
60

1
2
3 The results and conclusions of these investigations should also contribute to the identification of
4 adulterated modified bitumens.
5
6

7 8 **2. Materials and methods**

9 10 **2.1. Materials**

11
12 The standards used: polystyrene (1,260,000 Da, 120,000 Da, 30,300 Da, 2,450 Da) and
13 benzene were purchased from Merck (Germany), SBS (styrene-butadiene-styrene) and SB
14 (styrene-butadiene) – both from Polish manufacturer. The eluents/solvents used in the
15 investigations – dichloromethane, methanol and toluene (POCH, Poland) were analytically pure
16 and tetrahydrofuran (Merck, Germany) was of HPLC grade. The chromatographic columns
17 employed during the experiments were: two 250 x 7 mm LiChrogel PS1 (5 µm) columns
18 (Merck, Germany) and two 250 x 7 mm LiChrogel PSMix columns (Merck, Germany). The
19 PTFE disc filters (0.45µm) were purchased from Merck (Germany).
20
21
22
23
24
25
26
27
28
29
30
31

32 **2.2. Apparatus**

33
34 A Merck–Hitachi (Darmstadt, Germany) gradient liquid chromatograph equipped with an L-
35 7100 four-channel pump, a 7450A UV-Vis diode array detector, a RID 7490 refractive index
36 detector, a 7350 thermostat with a 7350i cooling system, a Rheodyne model RH-7725i injector
37 with a 20-µL sample loop, a V7226 six-port two-position backflush valve (Knauer, Berlin,
38 Germany) to switch the flow direction of the mobile phase, were used in the present work.
39
40
41
42
43
44
45
46

47 A FTIR NICOLET 8700 (Thermo Electron Corporation) spectrometer with Specac Golden
48 Gate ATR accessory; an analytical balance (RADWAG Poland); an XL ultrasonic bath, a 2020
49 Sonificator® Misonix (USA) and a rotary evaporator Heidolph (Germany) were used.
50
51
52
53

54 An Iatroscan (Iatron Labs, Japan) TLC-FID analyzer equipped with Chromarod-S III rods was
55 also used. Additional equipment included: an automated sample dispenser SES 3200/IS-01, a
56
57
58
59
60

1
2
3 TLC rods dryer model TK-8, an analogue-to-digital converter and software for data processing
4
5 (Elkor, Poland).
6
7

8 **2.3 Samples**

9

10
11 Unmodified bitumens: 35/50, 160/220 and modified bitumens: 25/55-60, 45/80-55 (from
12 international supplier of bitumens) were examined. In addition, samples of asphalt from streets
13 paved at different times (year: 2006, 2007, 2008) were investigated. The latter samples were
14 taken from various streets in Gdansk, Poland (see Fig. 1), namely:
15
16
17
18

- 19
20
21 ➤ modified bitumen samples were taken from: Marynarki Polskiej Street (year 2006),
22 Grunwaldzka Street (year 2007) and Cienista Street (year 2008);
- 23
24
25 ➤ unmodified bitumen samples – from: Spacerowa Street (year 2006), Źródłana Street
26 (year 2007) and Kampinoska Street (year 2008).
27
28
29

30 **2.4 Procedure**

31

32 **2.4.1. Sample preparation**

33

34 **a) Road pavement samples**

35
36
37

38
39 Six samples of modified and unmodified bitumens were collected in the Gdansk area at
40 different time points during the road construction. Samples (3-5 grams) were taken from the
41 depth of 1 cm (sample width ca. 1 cm).
42
43
44
45
46

47 **b) Bitumen solutions**

48
49

50
51 The size-reduced samples (approximately 2.5 g) of collected road pavements were transferred
52 into pre-weighed 10-mL vials and subjected to ultrasound-assisted extraction with an organic
53 solvent - dichloromethane (DCM) for 10 minutes. The extraction was then continued until the
54
55
56
57
58
59
60

1
2
3 mineral aggregates turned clean and bitumen was visibly dissolved. The undissolved material
4 was vacuum filtered onto 90 mm disc filters which were subsequently washed a couple of times
5 with dichloromethane. The filtrates were transferred into pre-weighed 100-mL round-bottom
6 flasks and evaporated to dryness in a rotary evaporator at 40 °C. Finally, the flasks were dried in
7 a laboratory dryer for 30 min at 120 °C and the obtained samples (of known mass) were
8 dissolved in THF for GPC/SEC.
9

10 11 12 13 14 15 16 17 18 **2.4.2 Infrared Spectroscopy (FT-IR)**

19
20 Spectral analysis was performed by using the attenuated total reflectance (ATR) technique
21 according to the modified procedure described in standard AASHTO T 302-05 (2007). Total
22 reflectance is achieved by directing a beam of infrared radiation onto the side of a diamond
23 optical element that constitutes the main part of a Golden Gate accessory. Samples in a solid
24 state were placed on the surface of a crystal (diamond). Spectra were recorded at a 4cm⁻¹
25 resolution by averaging 32 measurements in the range from 4000 cm⁻¹ to 500 cm⁻¹. The
26 maximum absorbance for bitumen should be at ca. 1375 cm⁻¹, while the peak having a maximum
27 at 975 cm⁻¹ indicates the presence of SB or SBS.
28
29
30
31
32
33
34
35
36
37
38

39 40 41 42 **2.4.3 Size Exclusion Chromatography (GPC/SEC)**

43 Two PS-MIX (250×7 mm, d_p = 5µm) and two PS-1 (250×7 mm, d_p = 5µm) columns with
44 tetrahydrofuran as the mobile phase, and a refractive index and a UV-DAD detectors connected
45 in series were used in this study. All samples were separated at 20 °C. The mobile phase flow
46 rate was 1 mL/min and the injection volume was 20 µL. The solutions were filtered through
47 0.45-µm PTFE membrane filters. For the determination of molecular mass, calibration curves
48 were prepared by using molecular mass standards with known masses (1,260,000 Da, 120,000
49 Da, 30,300 Da, 2,450 Da, benzene). To determine the modifiers in bitumens, calibration curves
50
51
52
53
54
55
56
57
58
59
60

1
2
3 were prepared by using solutions of bitumens in THF at 50 mg/mL with the following modifier
4 concentrations: 1% SBS, 3% SBS, 5% SBS, 7% SBS. An analogous series of solutions was
5 prepared using bitumens modified with SB.
6
7
8
9

10 **2.4.4 Thin Layer Chromatography Coupled with Flame Ionization Detection (TLC-FID)**

11
12 Separation of bitumens was performed according to a modified procedure published previously
13 (Gudebska, 1999). During bitumen separation, an optimization procedure was carried out – the
14 flow rates of hydrogen and air were changed prior to analysis of each of the ten chromarods –
15 and the optimum flow rates for hydrogen (150 mL min^{-1}) and for air (1.8 L min^{-1}) were selected.
16
17
18
19
20
21
22

23 Chromarods were activated by passing them through a TLC-FID analyzer using a hydrogen
24 flame just before sample application. Activated rods were spotted with $1 \mu\text{L}$ of sample solution
25 containing: $10 \text{ mg asphalt mL}^{-1}$ dichloromethane and 1 mg SBS mL^{-1} dichloromethane, using a 2 -
26 μL microsyringe. After application of spots, the rods were dried for 2 minutes in an oven at 70°C
27 and placed for 10 minutes in a desiccator. Next, the rod holder carrying the chromarods was
28 placed in a TLC chamber containing the solvent – a mixture of dichloromethane: methanol 95:5
29 (v/v). Elution was carried out to a height of 2.5 cm. The rod holder was put in an oven at 70°C
30 for 2 minutes and then placed in a desiccator for 10 minutes, and after that – for 10 minutes in a
31 TLC chamber containing toluene where the chromarods were developed up to a height of 6 cm.
32 Next, the rod holder was transferred to an oven for 2 minutes, then to a desiccator for 10
33 minutes, and finally it was placed in the TLC chamber containing hexane for 5 min where the
34 elution was carried out to a height of 10 cm.
35
36
37
38
39
40
41
42
43
44
45
46
47
48
49
50

51 Detection was carried out by the FID detector with digital acquisition of the detector signal.
52
53

54 **2.4.5 Determination of SB and SBS**

1
2
3 Analytical conditions were optimized using solutions of road bitumen having concentrations of
4 0.05 g/mL and of modifiers of 0.005 g/mL in tetrahydrofuran (for GPC analysis). Next, the
5 samples were prepared according to the procedure described in „Sample preparation FT-IR and
6 GPC/SEC”.

7
8
9
10
11
12 The limit of quantitation (LOQ) was taken as the concentration corresponding to the signal five
13 times as great as the noise corrected for the recovery. The LOQ values (the lowest concentration
14 of modifier that could be determined using the developed procedure) for SBS and SB were
15 0.46% and 0.38%, respectively. The determination of polymer content in bitumens was carried
16 out by the external standard method. Four-point calibration curves were prepared using solutions
17 of modified bitumens with known modifier concentrations in a typical range of 1-7%. Each
18 determination was repeated five times. The peak area of modifiers in real samples was
19 determined using a so-called “drop” integration method and the same method was applied for the
20 preparation of the calibration curve. Drop method is based on drawing a perpendicular line to the
21 baseline from the “valley” between the chromatographic peaks which are not separated.

22
23
24
25
26
27
28
29
30
31
32
33
34
35
36
37
38
39
40
41
42
43
44
45
46
47
48
49
50
51
52
53
54
55
56
57
58
59
60
In case of calibration curve preparation, the applied “drop” method enabled to obtain
satisfactory values of determination coefficient (R^2) within the “practical” range of
concentrations presented in the paper. It confirms the correctness of determinations performed
with the use of the calibration curve.

2.4.6 Quality control, quality assurance

Statistical studies were carried out using Microsoft Excel Data Analysis ToolPak. The
following parameters were calculated: the arithmetic mean, standard deviation (SD), relative
standard deviation (RSD), limit of repeatability and parameters describing the regression, i.e. the

1
2
3 value of the slope and correlation coefficients. The results are reported as the mean value from at
4
5 least five independent measurements, in which the difference did not exceed 5%.
6
7

8 **3. Results and discussion**

9 10 **3.1 Infrared spectroscopy (FT-IR)**

11
12 Attenuated total reflection (ATR) infrared spectroscopy was used to perform spectral analysis
13
14 of the samples (see Fig.2).
15

16
17 Spectral analysis confirmed the presence of alkyl groups as evidenced by the C-H stretching
18
19 vibrations in the $3000\text{--}2850\text{ cm}^{-1}$ region. No bands were detected for the wavenumber values
20
21 greater than 3000 cm^{-1} . Inspection of the $1760\text{--}1665\text{ cm}^{-1}$ range (carbonyl band position)
22
23 revealed no evidence for the presence of carboxylic, ester, aldehyde, amide and ketone groups.
24
25

26
27 The following characteristic bands were observed:
28

- 29 ✓ C-H stretching from 3000 to 2850 cm^{-1} ,
 - 30 ✓ C-H bending or scissoring from 1470 to 1450 cm^{-1} ,
 - 31 ✓ C-H rocking from 1370 to 1350 cm^{-1} .
- 32
33
34
35
36

37 Bands in the $1300\text{--}900\text{ cm}^{-1}$ region, which is called the fingerprint region, originated from
38
39 skeletal vibrations and formed a complex picture. In general, it is difficult to interpret bands in
40
41 this particular region. However, each organic compound has its unique pattern, the so-called
42
43 fingerprint, which can be used for its identification by comparing the compound's fingerprint
44
45 with the fingerprint of the selected standard reference material (AASHTO T302-05, 2007). In the
46
47 case of reference standards such as SBS and SB, the characteristic region occurs at 965 cm^{-1} and
48
49 697 cm^{-1} , respectively. The SBS band is split, while no such feature occurs in the case of SB
50
51 (Fig. 3). The polymers in the analyzed samples could not be positively identified because their
52
53 content was too low and the absorption bands were blurred.
54
55
56
57
58
59
60

1
2
3 The contents of modifiers were determined from a calibration curve (Fig. 4 prepared on the
4 basis of data listed in Table 1) for the characteristic regions ($R^2=0.9998$; absorbance =
5 $f(\text{concentration of modifier}): (A1/A2) = 0.031c + 0.0286$).
6
7
8
9

10 The concentrations of modifiers determined in all the examined samples are listed in Table 2.
11

12 13 **3.2 Size exclusion chromatography (GPC/SEC)** 14

15 Examples of chromatograms of selected bitumens (including those from road pavement) are
16 shown in Figures 5 and 6, while Figure 7 presents chromatograms of the mixtures containing
17 polystyrenes and the analyzed modifiers.
18
19
20
21

22 The chromatograms of modified bitumens reveal an additional peak compared to the
23 chromatograms of unmodified bitumens. The peak is attributed to the presence of a modifier
24 (Fig. 5a) and has a lower retention due to the high molecular weight of the compound (Fig. 7).
25 The obtained molecular weight of ca. 550 kDa is not the true molecular weight of the analyzed
26 polymer, but its relative molecular weight with respect to the molecular weight of polystyrene.
27
28
29
30
31
32
33

34 The GPC/SEC molecular weight distribution calibration curve ($\log M = f(V_e)$) presented in
35 Fig. 8 (blue curve) was prepared on the basis of Fig. 7a. The five points (blue dots in Fig. 8)
36 indicated on the calibration curve refer to the obtained values of $\log M = f(V_e)$ of
37 polystyrenes of masses: 1,260,000, 120,000, 30,300, 2,450 Da and to acetone (58 Da). The
38 average molecular weights for the modifier and bitumens were calculated from the equation: \log
39 $M = -0.4656V_e + 13.31$. Using the GPC/SEC chromatograms in Fig. 5-7, it was possible to
40 indicate on the calibration curve the ranges of elution volume characteristic of the modifier
41 (purple line) and bitumen (black lines). Since the chromatographic peaks for bitumen (Fig. 5, 6)
42 are not typical because they split into two fractions, there are two black lines in Fig. 8. It is likely
43 that the first fraction (counting from right to left) represents bitumen sample components with
44
45
46
47
48
49
50
51
52
53
54
55
56
57
58
59
60

1
2
3 lower molecular weights, while the second is the result of oxidation and polymerization process
4 and contains sample components with higher molecular weights. It was not possible to present
5
6 separately the V_e ranges for two types of the examined modifiers (SBS and SB) due to their
7
8 similar molecular weights. Therefore, size exclusion chromatography is not an appropriate
9
10 technique to distinguish these two modifiers.
11
12
13

14
15 A calibration curve (Fig. 9 prepared on the basis of data listed in Table 3) used for the
16
17 determination of modifier concentration was constructed based on the GPC/SEC measurements
18
19 made for four 35/50 bitumen solutions with increasing polymer contents, namely, 1, 3, 5 and 7%
20
21 ($R^2=0.9844$, peak area = f(concentration of modifier): $A = 149295c + 201.45$). The obtained
22
23 results, including descriptive statistics, are presented in Table 4. A comparison of
24
25 chromatograms of unmodified and modified asphalts, both “unused” samples (obtained from the
26
27 manufacturer) and samples collected from the roads reveals that the analytical signal in the range
28
29 of the expected value of the modifier retention time was obtained only in the case of modified
30
31 bitumen samples. According to the obtained results, both steps, *i.e.*, sample preparation
32
33 procedure and chromatographic analysis, proved to be optimal for the intended use of the
34
35 methodology presented in this study. In this way, the ability of GPC/SEC to distinguish modified
36
37 road bitumens from unmodified ones was confirmed. The procedure developed in this work is
38
39 particularly important in quality control measurements of modified bitumens as well as in
40
41 comparative and arbitration analysis whenever there is a suspicion that the amount of modifier
42
43 added to bitumen was lowered by the manufacturer or when there is a suspicion that the
44
45 delivered material does not meet the specifications concerning the modifier content. Moreover,
46
47 the procedure described here is also applicable to the assessment of aging of road asphalts and
48
49 their degradation during usage.
50
51
52
53
54
55
56
57
58
59
60

1
2
3
4
5
6
7
8
9
10
11
12
13
14
15
16
17
18
19
20
21
22
23
24
25
26
27
28
29
30
31
32
33
34
35
36
37
38
39
40
41
42
43
44
45
46
47
48
49
50
51
52
53
54
55
56
57
58
59
60

As was the case of ATR infrared spectroscopy measurements, sample 1 again displayed a lowered content of modifier when assayed by GPC/SEC. A comparison of the results obtained by FTIR and GPC/SEC shown in Tables 2 and 4 reveals that the differences between the two procedures for the average modifier content in each of the investigated bitumens are within the repeatability of the FTIR method. Consequently, the developed GPC/SEC procedure is a viable alternative to FTIR while offering an improved precision of the determinations as indicated by substantially lower relative standard deviation values.

3.3 Thin layer chromatography coupled with flame ionization detection (TLC-FID)

Table 5 summarizes the differences in group composition content resulting from the presence of the modifier. For unmodified bitumen 35/50, it can be noticed that the most abundant group are aromatic compounds (49.99%), followed by resins (21.58 %) and saturated compounds (21.27 %). In contrast, modified bitumen 25/55-60 shows significant differences in the group composition, caused by the presence of the modifier.

The TLC-FID technique is not useful for the determination of asphalt modifiers; however, it allows determining the group composition of bitumens. Comparing the results of each fraction content for both types of bitumen one can observe a decrease in aromatic compounds content and an increase in resin content in a modified bitumen sample (Table 5). These changes result from the polymer presence, because SBS – due to the presence of aromatic rings in polystyrene and the double bonds in polybutadiene – has a greater affinity to aromatic and resin fractions. Differences in group-type composition after bitumen modification may result from the conversion of bitumen constituents. SBS probably binds aromatic molecules in a molecular network, causing an increase in their weight and, therefore, shifting them to the resin fraction region.

1
2
3 The polymer applied at a high concentration on the chromatods was not separated and
4 remained at the start along with some part of the asphaltene fraction. Another attempt with a
5 lower concentration of a polymer sample showed the presence of the signal which had the
6 highest intensity in the range of aromatic fractions. At a high concentration (greater than 30 mg
7 ml⁻¹) of the polymer there is a problem of polymer solubility. The mobile phase used for
8 chromatogram development is a mixture of dichloromethane-methanol 95/5 (v/v) and the
9 polymer is insoluble in methanol. Consequently, the presence of methanol causes SBS stoppage
10 at the start. This limitation is only theoretical due to a relatively low concentration of the
11 modifier in commercial bitumens.
12
13
14
15
16
17
18
19
20
21
22
23

24 **4. Conclusions**

25
26 The concept of using infrared spectroscopy for determining the content of polymer modifiers
27 in road bitumens is valid, as supported by the published literature. Such polymer modifiers as
28 styrene-butadiene-rubber (SBR), styrene-butadiene-styrene (SBS) and styrene-butadiene (SB)
29 are characterized by the specific band regions at 965cm⁻¹ and 697 cm⁻¹. The SBS band at 965
30 cm⁻¹ is split in contrast with the SB modifier. A positive identification of individual polymers in
31 the analyzed samples of paving bitumens was not possible due to low analyte content and the
32 significantly blurred bands.
33
34
35
36
37
38
39
40
41
42

43 The studies revealed that infrared spectroscopy should be appended with the size exclusion
44 chromatography, as the latter results in repeatable measurements with smaller errors.
45
46
47

48 The developed procedure for the determination of polymer modifiers in paving bitumens by
49 size exclusion chromatography requires the use of four columns connected in series, i.e. two PS1
50 columns and two PS Mix columns packed with a styrene-divinylbenzene copolymer, and
51 tetrahydrofuran as the eluent. This procedure allows the separation of modifiers from other
52
53
54
55
56
57
58
59
60

1
2
3 bitumen components, as well as the determination of modifier content. However, size exclusion
4 chromatography does not allow simultaneous identification of SBS and SB modifiers present in
5
6 the same sample because the difference between the molecular weights of these polymers is too
7
8 small.
9
10

11
12 In addition, the studies carried out using thin layer chromatography coupled with flame
13 ionization detection have demonstrated that this technique is useful for determining the
14 composition of modified bitumens. Modified bitumens contain more so-called resins and less
15 aromatic compounds than unmodified bitumens. This is due to structural changes in aromatic
16 hydrocarbons interacting with polymer molecules. The TLC-FID technique does not allow the
17 determination of the modifier content in bitumen samples because the modifier is eluted in the
18 range of aromatic compounds and resins. Furthermore, the application of the procedure described
19 in Polish standard PN EN 129161 (2008) using NP-HPLC also did not allow the measurement of
20 the polymer content. In this case, the failure was caused by poor solubility of polymer modifiers
21 in the eluent used. The developed procedures also allow determining the modifier content in road
22 bitumens already used for road paving, as well as the rate of degradation of the modifier during
23 its use.
24
25
26
27
28
29
30
31
32
33
34
35
36
37
38
39

40
41 This paper describes the methodological basis for the determination of modifiers content in
42 bitumen samples collected from the roads. It is the first work allowing to perform such
43 determination using gel permeation/size exclusion chromatography (GPC/SEC). The developed
44 methodology will be used for monitoring the changes of modifier concentration in bitumens
45 during road pavement aging, as well as, for comparative studies of modified bitumen supplied by
46 different manufacturers. The results of this research will be the subject of subsequent papers.
47
48
49
50
51
52
53
54
55
56
57
58
59
60

References

- AASHTO T302-05. (2007). Standard Method of Test for Polymer Content of Polymer-Modified Emulsified Asphalt Residue and Asphalt Binders.
- Airey, G.D. (2004). Styrene butadiene styrene polymer modification of road bitumens. *Journal of Materials Science*, 39, 951–959.
- Błażejowski, K. & Styk, S. (2004). *Technologia warstw asfaltowych* [Technology of asphalts]. Warszawa: Wydawnictwo Komunikacji i Łączności (in Polish).
- Boczka, G., Jaszczolt, M., Przyjazny, A. & Kamiński, M. (2013). Application of normal phase high performance liquid chromatography followed by gas chromatography for analytics of diesel fuel additives, *Analytical and Bioanalytical Chemistry*, 405, 6095–103.
- Diefenderfer, S. (2006). Detection of Polymer Modifiers in Asphalt Binder. Final report no. FHWA/VTRC 06-R18, Virginia Transportation Research Council in Cooperation with the U.S. Department of Transportation, available at: http://www.virginiadot.org/vtrc/main/online_reports/pdf/06-r18.pdf
- Doh, Y. S., Amirkhanian, S. N. & Kim, K. W. (2008). Analysis of unbalanced binder oxidation level in recycled asphalt mixture using GPC. *Construction and Building Materials*, 22(6), 1253–1260.
- Ecker, A. (2001). The application of IATROSCAN-technique for analysis of bitumen. *Petroleum and Coal*, 43(1), 51–53.
- Fernandes, M.R.S., Forte, M.M.C. & Leite, L.F.M. (2008). Rheological Evaluation of Polymer-Modified Asphalt Binders. *Materials Research*, 11(3), 381–386.

1
2
3 Gilgenast, E., Boczkaj, G., Przyjazny, A. & Kamiński M. (2011). Sample preparation
4
5 procedure for the determination of polycyclic aromatic hydrocarbons in petroleum
6
7 vacuum residue and bitumen, *Analytical and Bioanalytical Chemistry*, 401, 1059-69.
8
9

10 Gudebska, J. (1999). *Chromatografia cieczowa w oznaczaniu składu grupowego olejów*
11
12 *bazowych i asfaltów drogowych* [Base oil and road bitumens group-type composition
13
14 studies by means of liquid chromatography]. PhD thesis, Gdańsk University of
15
16 Technology, Gdańsk (in Polish).
17
18
19

20 Izquierdo, M.A., Navarro, F.J., Martínez-Boza, F.J. & Gallegos, C. (2012). Bituminous
21
22 polyurethane foams for building applications: Influence of bitumen hardness.
23
24 *Construction and Building Materials*, 30, 706–713.
25
26

27 Kamiński, M., Gudebska, J., Górecki, T. & Kartanowicz, R. (2003). Optimized conditions for
28
29 hydrocarbon group type analysis of base oils by thin-layer chromatography–flame
30
31 ionisation detection. *Journal of Chromatography A*, 991, 255–266.
32
33
34

35 Kim, K.W., Kim, K., Doh, Y.S. & Amirkhanian, S.N. (2006). Estimation of RAP's binder
36
37 viscosity using GPC without binder recovery. *Journal of Materials in Civil Engineering*,
38
39 *18(4)*, abstract.
40
41

42 Lamontagne, J., Dumas, P., Mouillet, V. & Kister, J. (2001). Comparison by Fourier
43
44 transform infrared (FTIR) spectroscopy of different ageing techniques: application to
45
46 road bitumens. *Fuel*, 80, 483–8.
47
48

49 Loeber, L., Muller, G., Morel, J. & Sutton, O. (1998). Bitumen in colloid science: a chemical,
50
51 structural and rheological approach. *Fuel*, 77, 1443–50.
52
53

54 Lu, X. & Isacson, U. (1998). Chemical and rheological evaluation of ageing properties of
55
56 SBS polymer modified bitumens. *Fuel*, 77, 961–72.
57
58
59
60

- 1
2
3 Masson, J-F., Price, T. & Collins, P. (2001). Dynamics of Bitumen Fractions by Thin-Layer
4
5 Chromatography/Flame Ionization Detection. *Energy & Fuels*, 15, 955–960.
6
7
- 8 Nivitha, M.R., Prasad, E. & Krishnan, J.M. (2015). Ageing in modified bitumen using FTIR
9
10 spectroscopy. *International Journal of Pavement Engineering*, first page preview,
11
12 <http://dx.doi.org/10.1080/10298436.2015.1007230>
13
14
- 15 Ouyang, Ch., Wang, S., Zhang, Yong & Zhang, Yinxi (2006). Improving the aging resistance
16
17 of styrenebutadieneestyrene tri-block copolymer modified asphalt by addition of
18
19 antioxidants. *Polymer Degradation and Stability*, 91, 795–804.
20
21
22
- 23 Paliukaitė, M., Vaitkus A. & Zofka, A. (2014). Evaluation of bitumen fractional composition
24
25 depending on the crude oil type and production technology. *The 9th International*
26
27 *Conference Environmental Engineering. Selected Papers, Article number:*
28
29 *enviro.2014.162.*
30
31
- 32 Peramanu, S. & Pruden, B.B. (1999). *Industrial & Engineering Chemistry Research*, 38,
33
34 3121–3122.
35
36
- 37 Piłat, J. & Radziszewski, P. (2007). *Nawierzchnie asfaltowe* [Asphalt surfaces]. Warszawa:
38
39 Wydawnictwo Komunikacji i Łączności (in Polish).
40
41
42
- 43 PN-EN 12916. (2008). *Przetwory naftowe. Oznaczanie grup węglowodorów aromatycznych w*
44
45 *średnich destylatach. Metoda wysokosprawnej chromatografii cieczowej z detektorem*
46
47 *współczynnika załamania światła* [Petroleum products. Determination of aromatic
48
49 hydrocarbon types in middle distillates. High performance liquid chromatography method
50
51 with refractive index detection] (in Polish).
52
53
54
55
56
57
58
59
60

1
2
3 PN-EN 14023. (2009). *Asfalty i lepiszcza asfaltowe, Zasady klasyfikacji asfaltów*
4
5 *modyfikowanych polimerami* [Bitumen and bituminous binders. Specification Framework
6
7 for polimer modified bitumens] (in Polish).
8

9
10 Polacco, G., Biondi, D., Stastna, J., Vlachovicova Z. & Zanzotto, L. (2004). Effect of SBS on
11
12 Rheological Properties of Different Base Asphalts. *Macromolecular Symposia*, 218, 333–
13
14 342.
15

16
17
18 Ramalinga Chandra Sekar, A., Mahendran, M., Vasudevan, R. & Velkennedy, R. (2015).
19
20 Polymer modified bitumen prepared using abs polymer characterization and application in
21
22 flexible pavement. *ARPJ Journal of Engineering and Applied Sciences*, 10(8), 1819–
23
24 6608.
25

26
27 Roberts F.L. et al. (1996). *Hot Mix Asphalt Materials, Mixture Design and Construction*,
28
29 second ed., National Center for Asphalt Technology (NCAT).
30

31
32 Ruan, Y., Davison, R.R. & Glover, C.J. (2003). The effect of long-term oxidation on the
33
34 rheological properties of polymer modified asphalts, *Fuel*, 82, 1763–73.
35

36
37
38 Wang, L., Razaqpur, G., Xing Y. & Chen G. (2015). Microstructure and rheological
39
40 properties of aged and unaged polymer-modified asphalt binders. *Road Materials and*
41
42 *Pavement Design*, 16(3), 592–607.
43

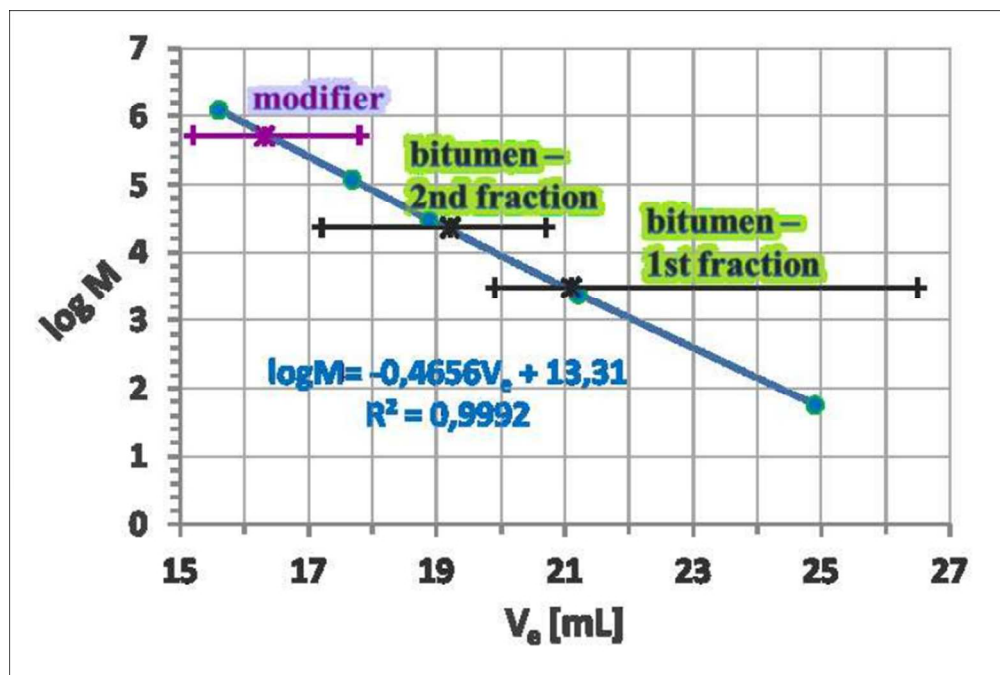
44
45 Wu, G., Zeng, S., Ou, E., Yu, P., Lu, Y. & Xu, W. (2010). Photoinitiator grafted styrene–
46
47 butadiene–styrene triblock copolymer. *Materials Science & Engineering C*, 30, 1030–
48
49 1037.
50

51
52
53 Yut, I. & Zofka, A. (2011). Attenuated total reflection (ATR) Fourier transform infrared (FT-
54
55 IR) spectroscopy of oxidized polymer-modified bitumens. *Applied Spectroscopy* 65:7,
56
57 abstract. doi: 10.1366/10-06217.
58
59
60

1
2
3 Zhang, J., Wang, J., Wu, Y., Sun, W. & Wang, Y. (2009). Thermal Behaviour and Improved
4
5 Properties of SBR and SBR/Natural Bitumen Modified Bitumens. *Iranian Polymer*
6
7 *Journal*, 18(6), 465-478.
8
9

10 Zhang, H., Jia, X., Yu, J. & Xue L. (2013). Effect of expanded vermiculite on microstructures
11
12 and aging properties of styrene-butadiene-styrene copolymer modified bitumen.
13
14 *Construction and Building Materials*, 40, 224-230.
15
16
17
18
19
20
21
22
23
24
25
26
27
28
29
30
31
32
33
34
35
36
37
38
39
40
41
42
43
44
45
46
47
48
49
50
51
52
53
54
55
56
57
58
59
60

For Peer Review Only

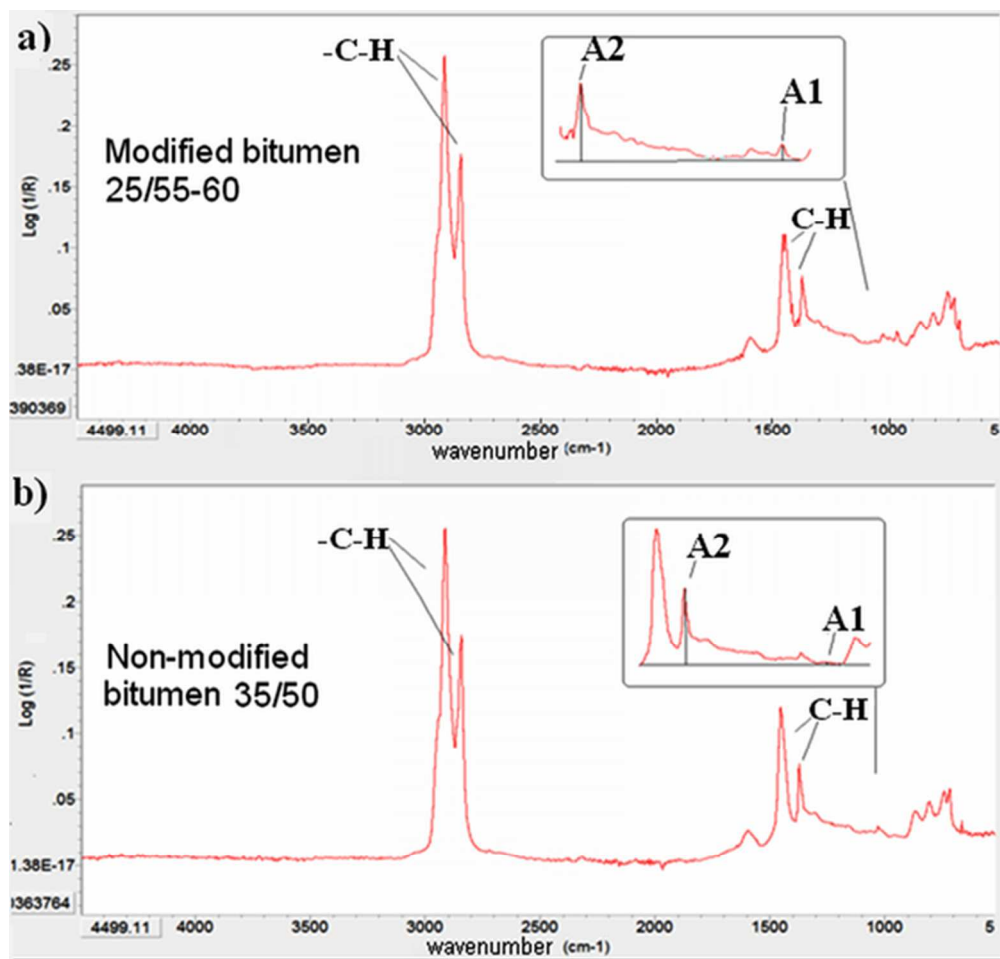


230x155mm (96 x 96 DPI)

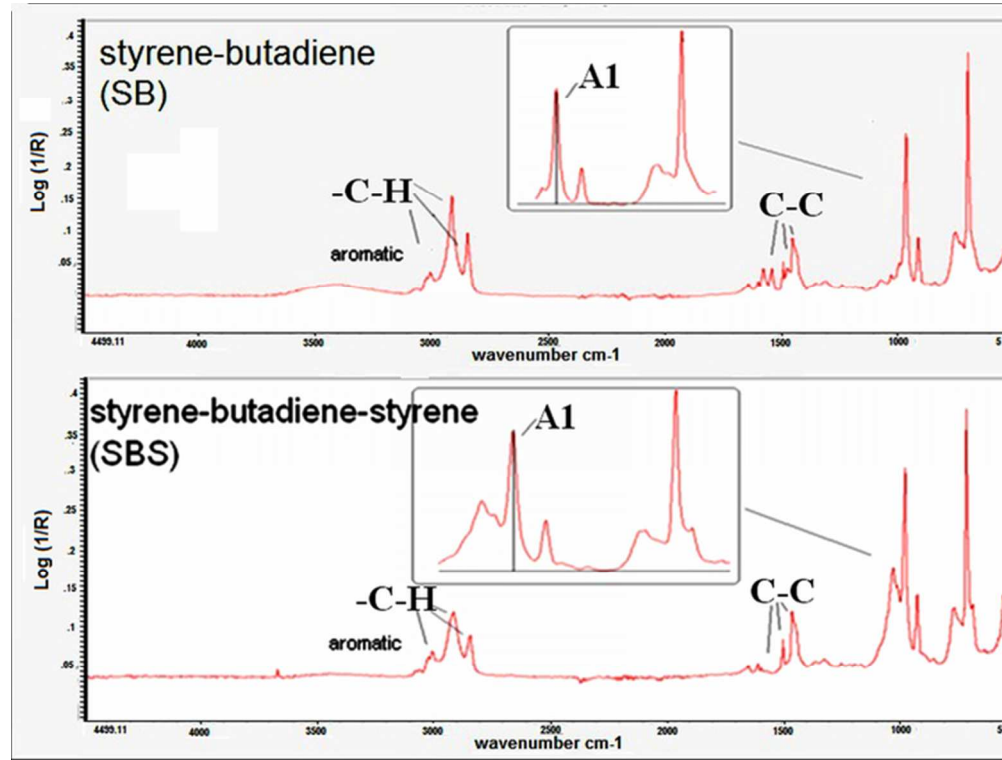
1
2
3
4
5
6
7
8
9
10
11
12
13
14
15
16
17
18
19
20
21
22
23
24
25
26
27
28
29
30
31
32
33
34
35
36
37
38
39
40
41
42
43
44
45
46
47
48
49
50
51
52
53
54
55
56
57
58
59
60



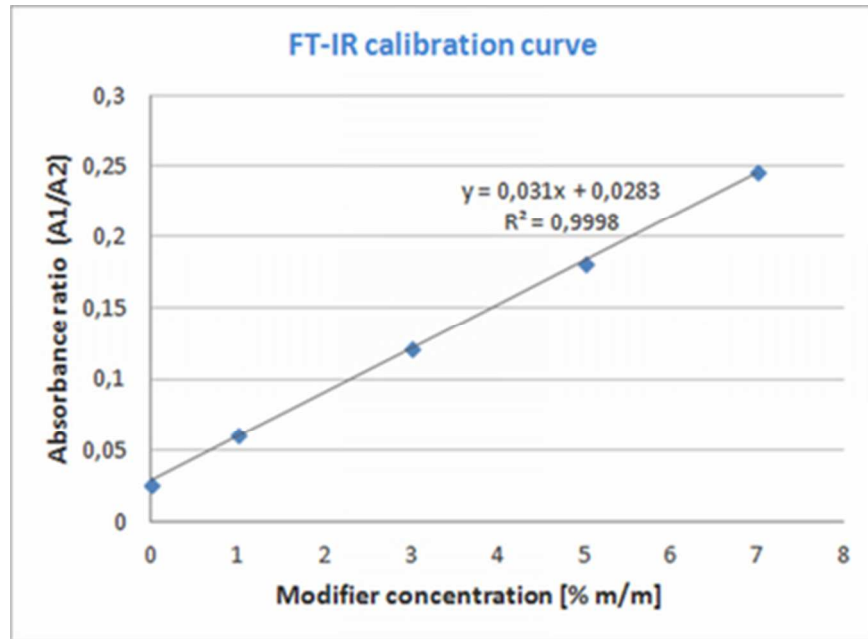
Map of Gdansk with sampling sites of modified and unmodified bitumens marked.
27x22mm (600 x 600 DPI)



ATR IR spectra with a resolution of 4 cm⁻¹ in the range 4000–500 cm⁻¹ of: a) modified bitumen 25/55-60
b) unmodified bitumen 35/50.
27x26mm (600 x 600 DPI)



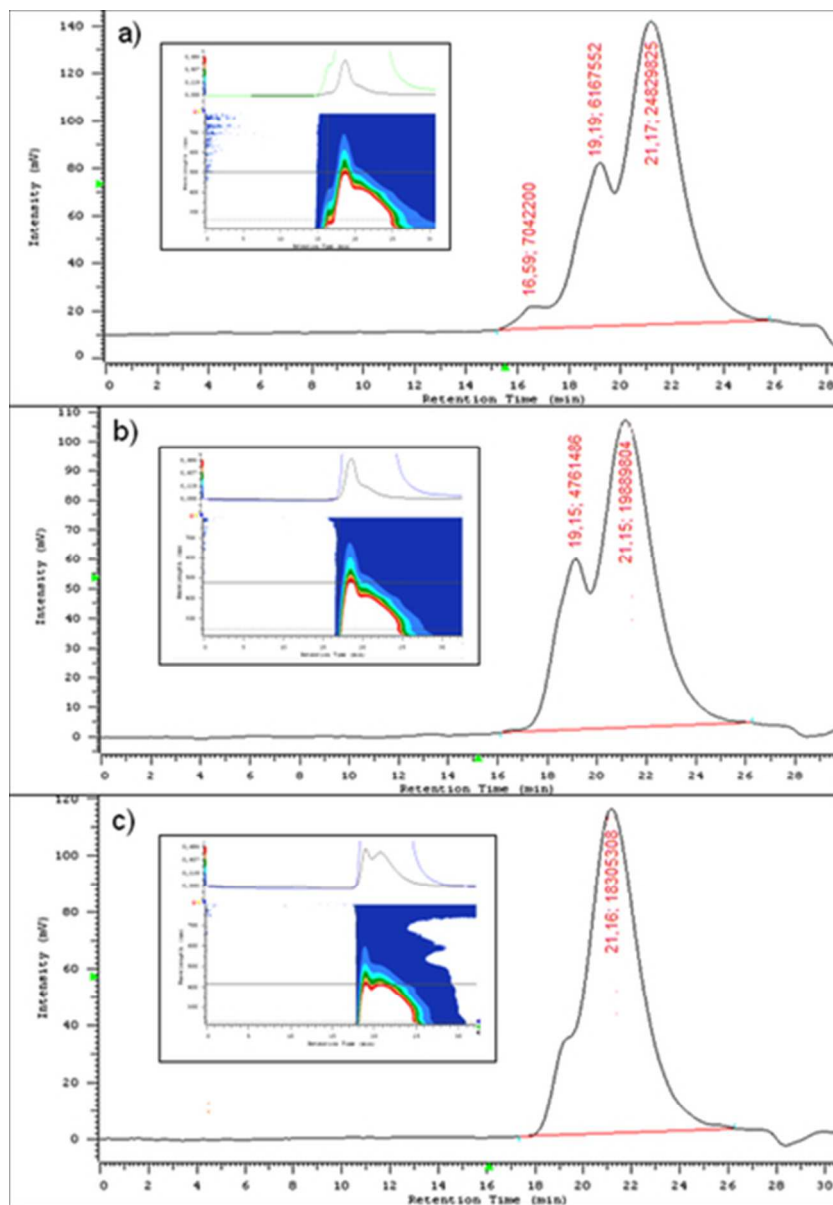
ATR IR spectra with a resolution of 4 cm⁻¹ in the range 4000–500 cm⁻¹ of SB and SBS modifiers.
30x23mm (600 x 600 DPI)



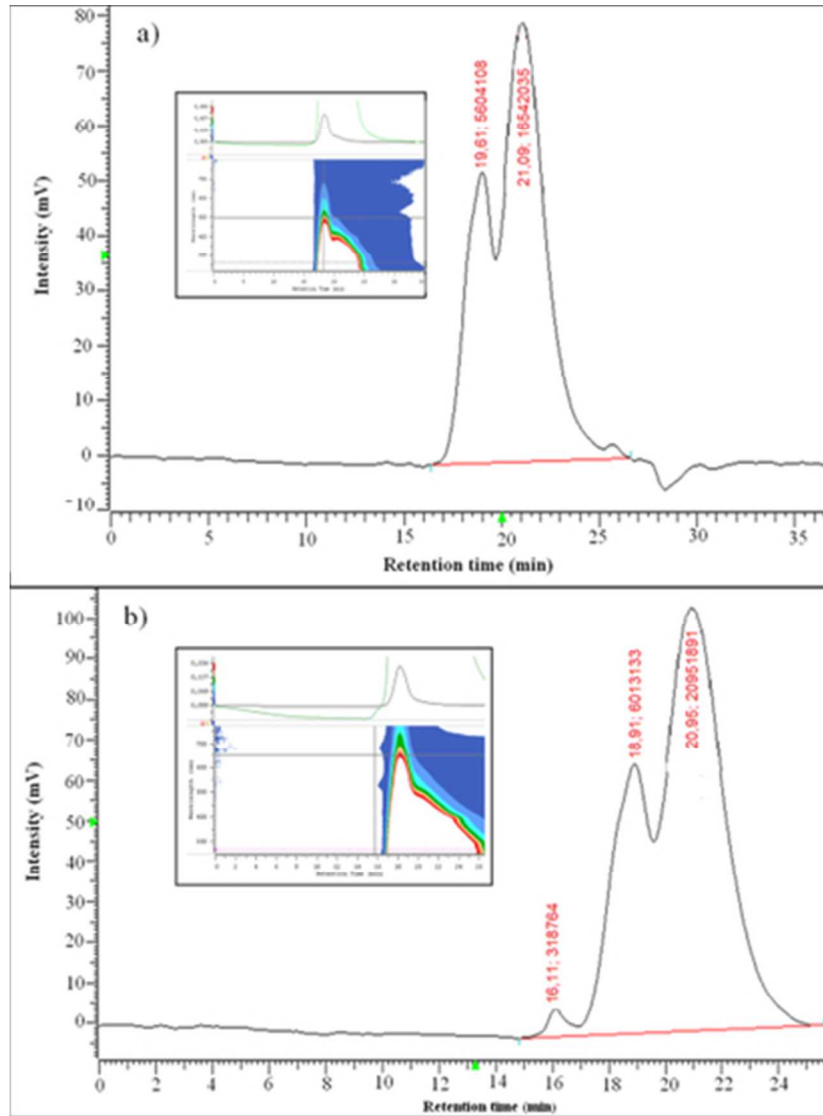
28
29
30
31
32
33
34
35
36
37
38
39
40
41
42
43
44
45
46
47
48
49
50
51
52
53
54
55
56
57
58
59
60

Calibration curve for FT-IR. Variable x stands for modifier concentration (in % m/m), variable y – for absorbance ratio.

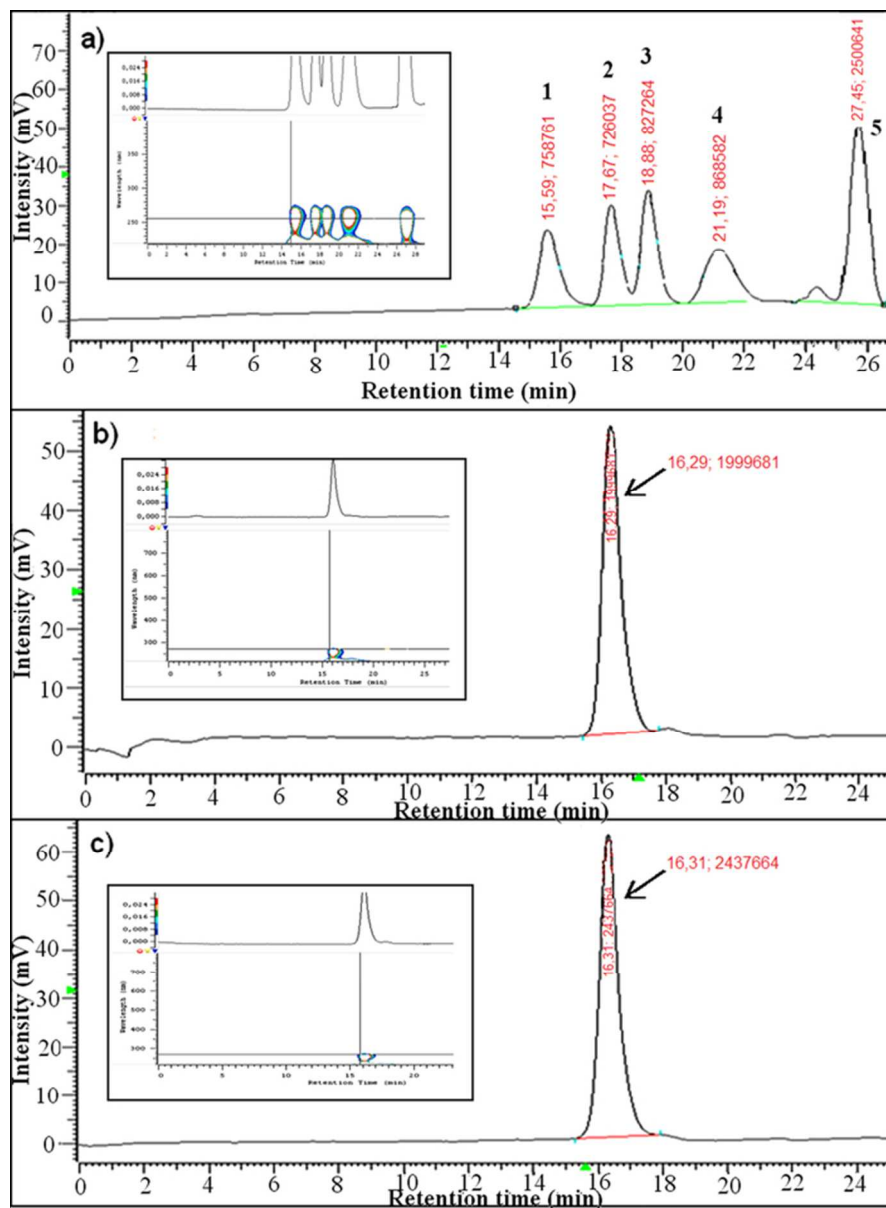
18x13mm (600 x 600 DPI)



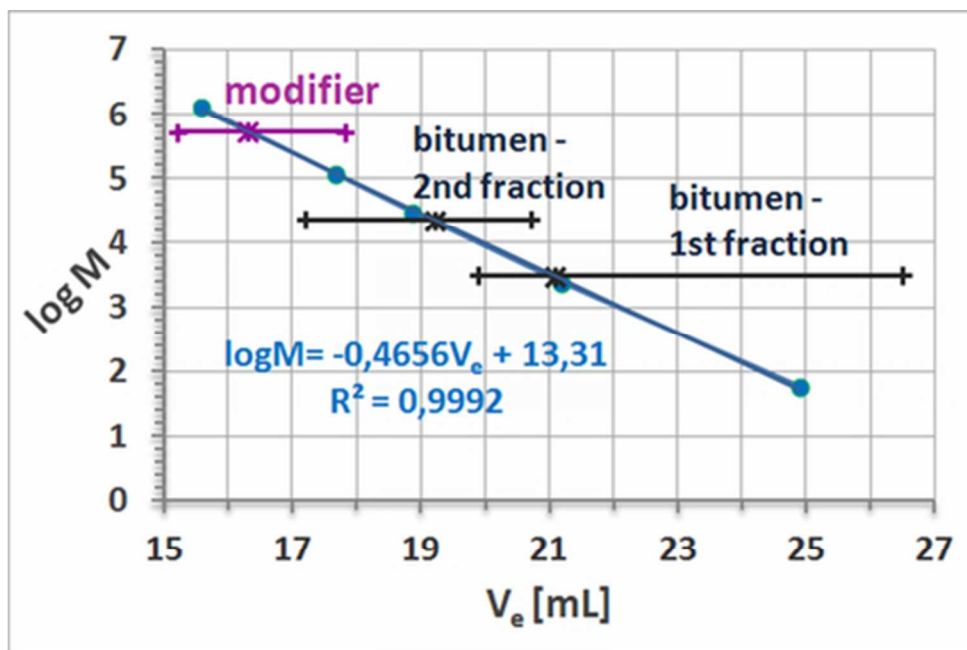
GPC/SEC chromatograms of bitumens. Columns: 2xPS1+2xPS MIX, eluent: tetrahydrofuran 1mL min⁻¹, injection volume 20 μ L, temperature 20 OC, a - modified bitumen 25/55-60 (50 mg mL⁻¹); b - unmodified bitumen 35/50 (50 mg mL⁻¹); c - unmodified bitumen 160/220 (50 mg mL⁻¹).
19x25mm (600 x 600 DPI)



GPC/SEC chromatograms of bitumens. Columns 2xPS1+2xPS MIX, eluent: tetrahydrofuran 1mL min⁻¹, injection volume 20 μ L, temperature 20 $^{\circ}$ C, a - unmodified bitumen from Kampinoska Street from year 2008 (50 mg mL⁻¹); b - modified bitumen from Cienista Street from year 2008 (50 mg mL⁻¹). 17x23mm (600 x 600 DPI)

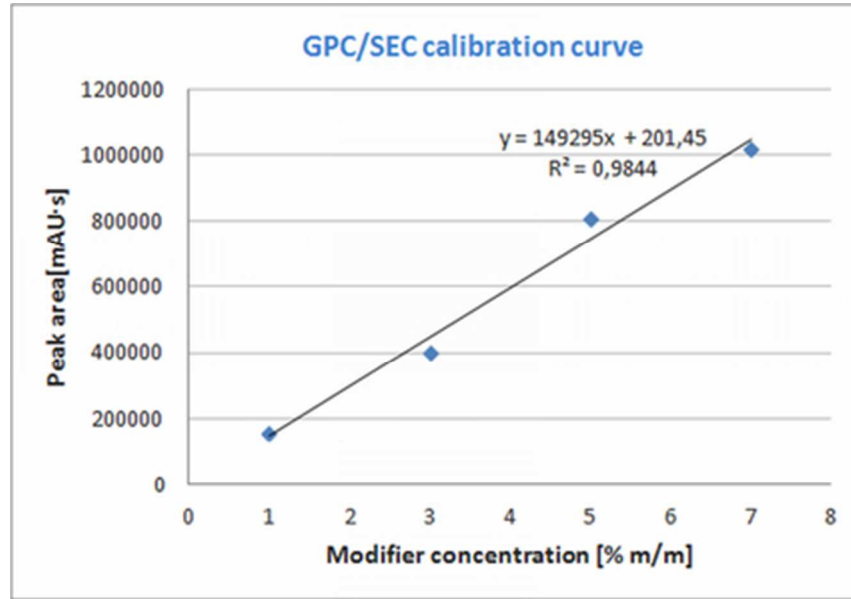


GPC/SEC chromatograms of polystyrenes and analyzed modifiers. Columns: 2xPS1+2xPS MIX, eluent: tetrahydrofuran 1mL min⁻¹, injection volume 20 μ L, temperature 20 OC; a–mixture of standards (where 1–4 are polystyrenes of masses: 1–1,260,000, 2–120,000, 3–30,300, 4–2,450, 5–acetone, 6–benzene) (5mg mL⁻¹); b–SBS (5 mg mL⁻¹); c–SB (5.3 mg mL⁻¹).
29x40mm (600 x 600 DPI)



GPC/SEC calibration curve ($\log M = f(V_e)$; blue) for polystyrenes of masses: 1,260,000, 120,000, 30,300, 2,450 and acetone. The relevant ranges of V_e values obtained for bitumen (black, 1st and 2nd fraction, where the 1st one refers to fraction of lower molecular mass, and 2nd - to higher molecular mass; explained in text), as well as for bitumen modifier (purple) are depicted in the graph.

20x13mm (600 x 600 DPI)



27 Calibration curve for GPC/SEC. Variable x stands for modifier concentration [% m/m], variable y – for peak
28 area [mAU·s].
29 18x12mm (600 x 600 DPI)

30
31
32
33
34
35
36
37
38
39
40
41
42
43
44
45
46
47
48
49
50
51
52
53
54
55
56
57
58
59
60

1
2
3
4 **Figure captions**
5
6
7
8
9

10 **Figure 1.** Map of Gdansk with sampling sites of modified and unmodified bitumens marked.
11

12
13
14
15
16 **Figure 2.** ATR IR spectra with a resolution of 4 cm^{-1} in the range $4000\text{--}500\text{ cm}^{-1}$ of: a) modified
17 bitumen 25/55-60 b) unmodified bitumen 35/50.
18
19

20
21
22
23
24
25 **Figure 3.** ATR IR spectra with a resolution of 4 cm^{-1} in the range $4000\text{--}500\text{ cm}^{-1}$ of SB and SBS
26 modifiers.
27
28

29
30
31
32 **Figure 4.** Calibration curve for FT-IR. Variable x stands for modifier concentration (in % m/m),
33 variable y – for absorbance ratio.
34
35
36

37
38
39
40
41 **Figure 5.** GPC/SEC chromatograms of bitumens. Columns: 2xPS1+2xPS MIX, eluent:
42 tetrahydrofuran 1 mL min^{-1} , injection volume $20\text{ }\mu\text{L}$, temperature $20\text{ }^{\circ}\text{C}$, a – modified bitumen
43 25/55-60 (50 mg mL^{-1}); b – unmodified bitumen 35/50 (50 mg mL^{-1}); c – unmodified bitumen
44 160/220 (50 mg mL^{-1}).
45
46
47
48
49

50
51
52
53
54
55 **Figure 6.** GPC/SEC chromatograms of bitumens. Columns 2xPS1+2xPS MIX, eluent:
56 tetrahydrofuran 1 mL min^{-1} , injection volume $20\text{ }\mu\text{L}$, temperature $20\text{ }^{\circ}\text{C}$, a – unmodified bitumen
57
58
59
60

1
2
3 from Kampinoska Street from year 2008 (50 mg mL^{-1}); b – modified bitumen from Cienista
4
5 Street from year 2008 (50 mg mL^{-1}).
6
7
8
9

10
11 **Figure 7.** GPC/SEC chromatograms of polystyrenes and analyzed modifiers. Columns:
12
13 2xPS1+2xPS MIX, eluent: tetrahydrofuran 1 mL min^{-1} , injection volume $20 \mu\text{L}$, temperature 20
14
15 $^{\circ}\text{C}$; a–mixture of standards (where 1–4 are polystyrenes of masses: 1–1,260,000, 2–120,000, 3–
16
17 30,300, 4–2,450, 5–acetone, 6–benzene) (5 mg mL^{-1}); b–SBS (5 mg mL^{-1}); c–SB (5.3 mg mL^{-1}).
18
19
20
21
22
23

24
25 **Figure 8.** GPC/SEC calibration curve ($\log M = f(V_e)$; blue) for polystyrenes
26
27 of masses: 1,260,000, 120,000, 30,300, 2,450 and acetone. The relevant ranges of V_e values
28
29 obtained for bitumen (black, 1st and 2nd fraction, where the 1st one refers to fraction of lower
30
31 molecular mass, and 2nd – to higher molecular mass; explained in text), as well as for bitumen
32
33 modifier (purple) are depicted in the graph.
34
35
36
37
38
39
40

41 **Figure 9.** Calibration curve for GPC/SEC. Variable x stands for modifier concentration [%
42
43 m/m], variable y – for peak area [mAU·s].
44
45
46
47
48
49
50
51
52
53
54
55
56
57
58
59
60

List of tables

Table 1. Actual data used for calibration curve preparation in case of FT-IR.

modifier concentration [% m/m]	0,0	1,0	3,0	5,0	7,0
absorbance ratio (A1/A2)*	0.027	0.061	0.122	0.182	0.246

* where A1 is characteristic absorbance for polymer modifier (965cm^{-1}), and A2 is characteristic absorbance for bitumen (1375cm^{-1})

Table 2. Concentration of modifiers in bitumens and statistical parameters for FT-IR technique.

Parameters	modified bitumen 25/55-60	modified bitumen 45/80-55	1 (2008)	2 (2007)	3 (2006)
Modifier concentration [%m/m]	4.52	3.51	2.24	3.32	3.36
Standard deviation	0.25	0.25	0.13	0.80	0.57
Relative standard deviation	0.05	0.07	0.06	0.24	0.17

Table 3. Actual data used for calibration curve preparation in case of GPC/SEC.

modifier concentration [% m/m]	1,0	3,0	5,0	7,0
peak area [mAU·s]*	158199	402767	811214	1017353

* the peak area are averages for triplicate analysis

For Peer Review Only

Table 4. Concentration of modifiers in bitumens and statistical parameters for GPC/SEC technique.

Parameters	modified bitumen 25/55-60	modified bitumen 45/80-55	1 (2008)	2 (2007)	3 (2006)
Modifier concentration [%m/m]	4.41	3.16	2.11	3.28	3.57
Standard deviation	0.24	0.13	0.06	0.24	0.06
Relative standard deviation	0.05	0.04	0.03	0.07	0.01

Table 5. Group composition of unmodified and modified bitumens.

Bitumen	Saturated compounds [%]	Aromatic compounds [%]	Resins [%]	Asphaltenes [%]
Unmodified bitumen 35/50	21.27	49.99	21.58	7.16
Modified bitumen 25/55-60	16.22	36.15	38.97	8.67