

## Assessment of the technological reliability of a hybrid constructed wetland for wastewater treatment in a mountain eco-tourist farm in Poland

Andrzej Jucherski<sup>1</sup>, Maria Nastawny<sup>1</sup>, Andrzej Walczowski<sup>1</sup>,  
Krzysztof Józwiakowski<sup>2</sup> and Magdalena Gajewska<sup>3</sup>

<sup>1</sup>*Mountain Centre of Studies and Implementations in Tylicz, Institute of Technology and Life Sciences in Falenty, Pułaskiego St. 25A, 33-383 Tylicz, POLAND*

<sup>2</sup>*Department of Environmental Engineering and Geodesy, University of Life Sciences in Lublin, Leszczyńskiego 7, 20-069 Lublin, POLAND ([krzysztof.jozwiakowski@up.lublin.pl](mailto:krzysztof.jozwiakowski@up.lublin.pl))*

<sup>3</sup>*Department of Water and Wastewater Technology, Gdańsk University of Technology, Narutowicza st. 11/12, 80-233, Gdańsk, POLAND*

### ABSTRACT

The aim of the present study was to assess the technological reliability of a domestic hybrid wastewater treatment installation consisting of a classic three-chambered (volume 6m<sup>3</sup>) septic tank, a vertical flow (VF) trickling bed filled with granules of a calcinated clay material (KERAMZYT), a special wetland bed constructed on a slope, and a permeable pond used as a receiver. The test treatment plant was located at a mountain eco-tourist farm on the periphery of the spa municipality of Krynica-Zdrój, Poland. The plant's operational reliability in reducing the concentration of organic matter measured as BOD<sub>5</sub> and COD, was 100% when modelled by both the Weibull and the lognormal distributions. The respective reliability values for total nitrogen removal were 76.8% and 77.0%, total suspended solids – 99.5% and 92.6 %, and PO<sub>4</sub>-P – 98.2% and 95.2%, with the differences being negligible. The installation was characterized by a very high level of technological reliability when compared to other solutions of this type. The Weibull method employed for statistical evaluation of technological reliability can also be used for comparison purposes. From the ecological perspective, the facility presented in the study has proven to be an effective tool for protecting local aquifer areas.

**Key words:** mountain aquifers; rural areas; cold climate; hybrid constructed wetland; technological reliability

### INTRODUCTION

Evaluation of the technological reliability of individual wastewater treatment systems should be an important part of planning and decision-making in water and wastewater management, particularly now, when a wide range of technological solutions are available (Józwiakowski et al. 2015). Reliable operation of wastewater treatment units must be ensured due to both environmental and human health protection concerns (Eisenberg et al. 2001; Wojciechowska et al 2016). Reliable operation of domestic wastewater treatment plants is especially important in mountain aquifer areas, which are very sensitive to pollution. Mountainous regions in Poland play a key role in developing and sustaining vital socio-economical and environmental functions which intertwine in the activities of spa and tourist resorts, forest management, environment-friendly farming and especially in hydrology.

1  
2  
3  
4  
5  
6  
7  
8  
9  
10  
11  
12  
13  
14  
15  
16  
17  
18  
19  
20  
21  
22  
23  
24  
25  
26  
27  
28  
29  
30  
31  
32  
33  
34  
35  
36  
37  
38  
39  
40  
41  
42  
43  
44  
45  
46  
47  
48  
49  
50  
51  
Although Polish mountainous areas have a high water production potential, as manifested by an almost 40% regional surplus in relation to the water discharged by all the rivers, Poland occupies one of the last positions in Europe in terms of the total freshwater resources, which are estimated at 1630 m<sup>3</sup>·year<sup>-1</sup>·person<sup>-1</sup>. Therefore, it is essential that groundwater and the upper reaches of local streams and mountain rivers should be protected against biological, chemical and bacteriological pollution resulting from the discharge of untreated domestic sewage to the environment in rural areas. One of the key issues in technological progress in wastewater management in rural, environmentally valuable areas, is the construction of small domestic or local wastewater treatment plants with a high, long-term reliability and effectiveness in reducing wastewater pollutions (Jucherski & Walczowski 2012; Masi et al. 2013; Józwiakowski et al. 2016; Gajewska et al. 2015).

Nowadays, more and more innovative wastewater treatment systems are being designed and offered on the market, which spurs the need for developing a universal method of assessing the reliability of the various treatment processes and facilities. Such a method would be helpful in planning and comparing the levels of protection offered by the various technologies (Józwiakowski et al. 2015).

The methods for determining the reliability of individual wastewater treatment systems have been described in more detail by Eisenberg et al. (2001). Lately Djeddou & Achour (2015) have proposed a method for predicting reliability using artificial neural networks.

A comprehensive and useful assessment of the reliability of domestic wastewater treatment plants should be based on a series of measurements and observations of treatment variability under normal and critical operating conditions as well as the probability of mechanical failures and their impact on the quality of the treated wastewater (Eisenberg et al. 2001).

Reliability is defined as the probability of achieving required performance of a wastewater treatment plant (WWTP) over a specific time and under specific conditions (Oliveira & Sterling 2008). To assess WWTP, a coefficient of reliability (CR) which relates mean pollutant concentrations to effluent standards (Niku et al. 1982) can also be used.

The statistical step in the assessment of WWTP reliability presented in this article is based on the normal (Niku et al. 1982), the lognormal (Oliveira & Sterling 2008) and the Weibull distributions (Bugajski et al. 2012; Nastawny & Jucherski 2013; Wałęga 2009). Statistical distributions of probability are used to establish the probability of occurrence of selected values of pollutants. Recent findings reported in the literature (Bugajski et al. 2012; Bugajski

2014; Nastawny & Jucherski 2013; Wałęga 2009) show that the Weibull distribution is an accurate and precise tool for evaluation of WWTP reliability.

Systems for domestic wastewater management are individual facilities with technical and quasi-technical treatment devices designed to collect and treat wastewater to the extent required by specific regulations (Regulation of the Polish Minister of Environment 2014) as well as discharge it to receivers without adversely affecting the soil–water complex in the place where the facilities are located. In rural areas, individual treatment facilities usually operate without constant supervision and are therefore particularly exposed to fluctuations in efficiency due to a variable load pattern (Massoud et al. 2009; Platzer & Mauch 1997); in consequence, the quality of effluent often does not meet the requirements stipulated in the regulations in force.

Hybrid wetland systems have recently been more and more frequently used for the treatment of domestic wastewater from museum buildings and forester or mountain shelters, including those located in national parks. When well designed and properly maintained, they can achieve high pollutant removal efficiencies (Masi et al. 2007; Osaliya et al. 2011; Józwiakowski et al. 2014; Sanchez-Ramos et al. 2015; Gizińska-Górna et al. 2016; Józwiakowski et al. 2016). The literature, however, provides little data on the reliability of pollutant removal processes in such CWS over long periods (years) of operation.

The aim of the present study was to assess the range of long-term fluctuations in treatment reliability in a domestic hybrid wastewater treatment plant. The plant had been built over ten years before on an eco-tourist farm in the mountain municipality and spa of Krynica-Zdrój in Poland and had been continuously operating since that time. The following indicators of wastewater contamination were measured: (i) BOD<sub>5</sub> and COD for contamination with organic matter, (ii) total suspended solids, (iii) total nitrogen (TN), and (iv) phosphorus PO<sub>4</sub>-P. The indicators results (pollutant concentrations) were compared to the Polish standards for treated wastewater (Regulation of the Polish Minister of Environment 2014) discharged into water and soil from treatment plants below 2000 PE.

## MATERIAL AND METHODS

The subject of the study was a hybrid wastewater treatment plant described in detail by Jucherski & Walczowski (2012). The plant was operated by an eco-tourist farm located in the rural peripheries of the spa town of Krynica-Zdrój, Poland. The plant had been monitored over the years 2005–2015. A schematic of the facility with the sampling points is presented in Fig. 1.

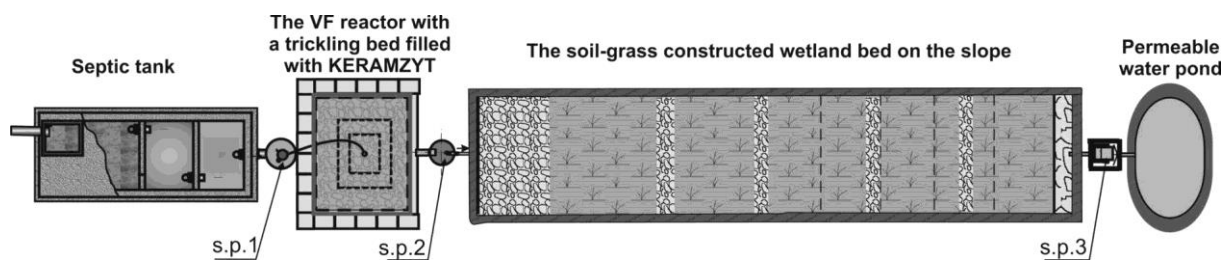


Figure 1. Schematic of the wastewater treatment installation (sampling points: s.p.1, s.p.2, s.p.3)

The installation consisted of a classic three-chamber septic tank, a vertical flow reactor (filter) followed by a special constructed wetland (SCW), and a permeable water pond as a receiver of the final effluent. The septic tank, with a capacity of  $6\text{m}^3$ , was a monolithic concrete structure designed to receive sewage with a seasonal variability from 3 to 15 persons (with an average of  $\text{PE}=5$ ). The substrate used in the vertical flow reactor were granules of a sintered clay material (KERAMZYT). To improve biological treatment and nitrification at the vertical stage, the wastewater was sprayed onto the surface of the reactor. Due to the harsh climate, it was necessary to use a cover to insulate the reactor from freezing in winter. Downstream of the reactor, there was a special filter bed (wetland) with subsurface flow, planted with a mix of reed sweet grass (*Glyceria maxima*), reed canary grass (*Phalaris arundinacea*) and other grasses spontaneously inhabiting the bed. The bed was constructed on a slope for tertiary treatment and removal of the remaining nutrients (N and P). The installation ended with a permeable pond for receiving and infiltration of the treated wastewater into the soil complex surrounding the treatment unit.

The average hydraulic load of the treatment plant in the investigation period was  $621.2\text{ dm}^3\cdot\text{day}^{-1}$ , and the average concentrations of pollutants in raw sewage were  $271.7\text{ mg O}_2\cdot\text{dm}^{-3}$  for  $\text{BOD}_5$ ,  $390.8\text{ mg O}_2\cdot\text{dm}^{-3}$  for COD,  $75.4\text{ mg}\cdot\text{dm}^{-3}$  for total suspended solids,  $110.5\text{ mg}\cdot\text{dm}^{-3}$  for total nitrogen, and  $12.3\text{ mg}\cdot\text{dm}^{-3}$  for phosphorus  $\text{PO}_4\text{-P}$  (Table 1). The flow of treated wastewater was calculated based on the water consumption reading of a water meter.  $\text{BOD}_5$  was determined using the OxiTop respirometric measuring system from WTW. COD, total nitrogen and phosphate phosphorus were determined using a Merck SQ118 photometer and a Merck thermoreactor TR-200. The total suspended solids were determined by a gravimetric method, in accordance with the standard PN-72/C-04559/02.

The statistical analysis was based on the normal, lognormal and Weibull distributions. Statistica v. 13.0 software was employed to define the characteristics of the distribution of the empirical data using the Kolmogorov-Smirnov goodness-of-fit test. Data were tested for

normality of distribution by measuring the distance between the empirical distribution and the theoretical distribution. The following null hypothesis was tested at 0.05 level of significance: distribution of the variable is normal/lognormal/Weibull. Furthermore the quality of fit of the Weibull distribution to empirical data was assessed using the Hollander–Proschan test for the significance level of 0.05. The reliability function  $R(x)$  was calculated as a complement to the cumulative distribution function using the following formula:

$$R(x) = 1 - F(x) \quad [1]$$

where  $x$  is an indicator of the concentration of pollutants in treated wastewater (Bugajski et al. 2012).

Reliability was determined from cumulative distribution plots, taking into consideration pollutant concentrations in treated wastewater permitted by the Regulation of the Polish Minister of Environment (2014) , i.e.:  $BOD_5 \leq 40 \text{ mg O}_2 \cdot \text{dm}^{-3}$ ,  $COD \leq 150 \text{ mg O}_2 \cdot \text{dm}^{-3}$ , total suspended solids  $\leq 50 \text{ mg} \cdot \text{dm}^{-3}$ , total nitrogen  $\leq 30 \text{ mg} \cdot \text{dm}^{-3}$ , total phosphorus  $\leq 5 \text{ mg} \cdot \text{dm}^{-3}$ .

## RESULTS AND DISCUSSION

The many-year means of effluent contaminant concentrations in wastewater treated in the investigated installation ( $BOD_5 - 3.49 \text{ mgO}_2 \cdot \text{dm}^{-3}$ ,  $COD - 28.0 \text{ mgO}_2 \cdot \text{dm}^{-3}$ , suspended solids  $- 15.8 \text{ mg} \cdot \text{dm}^{-3}$ , total nitrogen  $- 20.9 \text{ mg} \cdot \text{dm}^{-3}$ , and phosphorus  $P-PO_4 - 1.70 \text{ mg} \cdot \text{dm}^{-3}$ ) (Table 1) were much lower than required by the Regulation (2014) on discharging wastewater into the soil or surface waters including lakes and their tributaries, and artificial water reservoirs situated on flowing waters.

Table 1 shows the basic statistics for pollutant concentration in wastewater.

Table 1. Basic statistics for pollutant concentrations in wastewater

Parameter		Number of samples	Mean	Median	Minimum	Maximum	Standard deviation	Coefficient of variation
			$\text{mg} \cdot \text{dm}^{-3}$	$\text{mg} \cdot \text{dm}^{-3}$	$\text{mg} \cdot \text{dm}^{-3}$	$\text{mg} \cdot \text{dm}^{-3}$	$\text{mg} \cdot \text{dm}^{-3}$	%
$BOD_5$	inlet	57	271.7	230	90	580	132.9	48.8
	outlet	49	3.49	2.5	0	13	2.92	83.6
COD	inlet	61	391	353	214	641	114.9	29.4
	outlet	55	28	25	5	112	17.6	63
Suspended solids	inlet	48	75.4	66	19	218.6	40.5	53.7
	outlet	41	15.8	14	0	44.6	10.9	69.2
Total nitrogen $N_{\text{tot}}$	inlet	61	110.5	105.5	70.3	193.8	19.5	17.6
	outlet	55	20.9	19.5	1.6	64.8	16.4	78.5
Phosphorus $PO_4\text{-P}$	inlet	65	12.3	11.1	7.6	24.9	3.97	32.3
	outlet	59	1.7	1.5	0.14	5.46	1.23	72.2

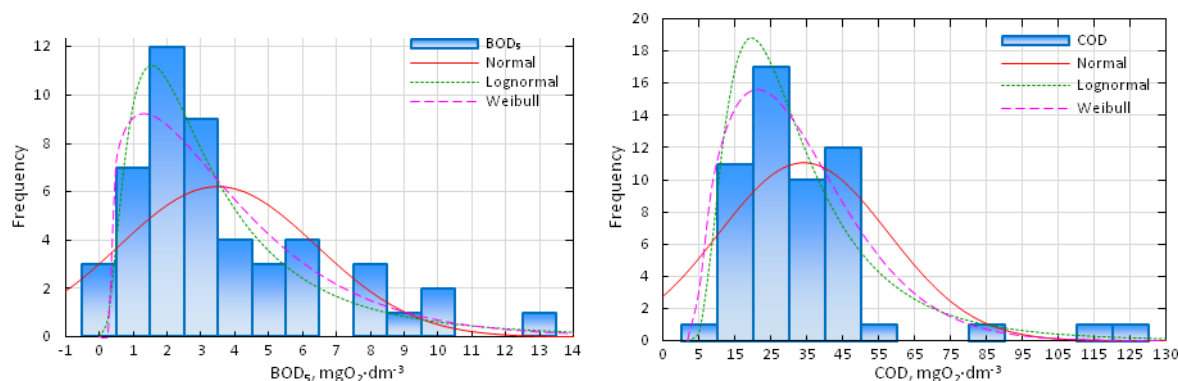
The effluent quality indicators were characterized by high coefficients of variation (Table 1) which, though statistically significant (and therefore useful for the evaluation of the treatment processes in the installation), were too low to have any relevance from the point of view of environmental protection. To determine the technological reliability of the treatment plant, a detailed statistical analysis was performed based on the distributions of the empirical data of each effluent contaminant. The normal, lognormal and Weibull distributions (Table 2, Fig. 2) were adjusted to data sets obtained during the 10-year study.

Table 2. The Kolmogorov-Smirnov goodness-of-fit statistics and significance levels for the analyzed empirical distributions

Distribution	Normal		Lognormal		Weibull	
	stat	p	stat	p	stat	p
BOD <sub>5</sub>	0.2076	0.0324	0.1118	0.5751	0.1354	0.3371
COD	0.1388	0.2183	0.0970	0.6427	0.1157	0.4208
TSS	0.0944	0.8454	0.1416	0.3786	0.1067	0.7262
Total nitrogen N <sub>tot</sub>	0.1422	0.1960	0.1604	0.1056	0.1085	0.5028
Phosphorus PO <sub>4</sub> -P	0.1093	0.4501	0.0926	0.6585	0.0507	0.9962

Symbols: stat – value of the statistic test, p – significance level of the test; when p is greater than 0.05, the distribution of empirical data can be described by the analyzed distribution

Statistical analysis using the Kolmogorov-Smirnov goodness-of-fit test showed that the Weibull and lognormal distributions could be well fitted to the empirical distributions of each pollution indicator, whereas the normal distribution gave a much worse fit, although it could also be used for most of the parameters, except BOD<sub>5</sub> (Table 2).



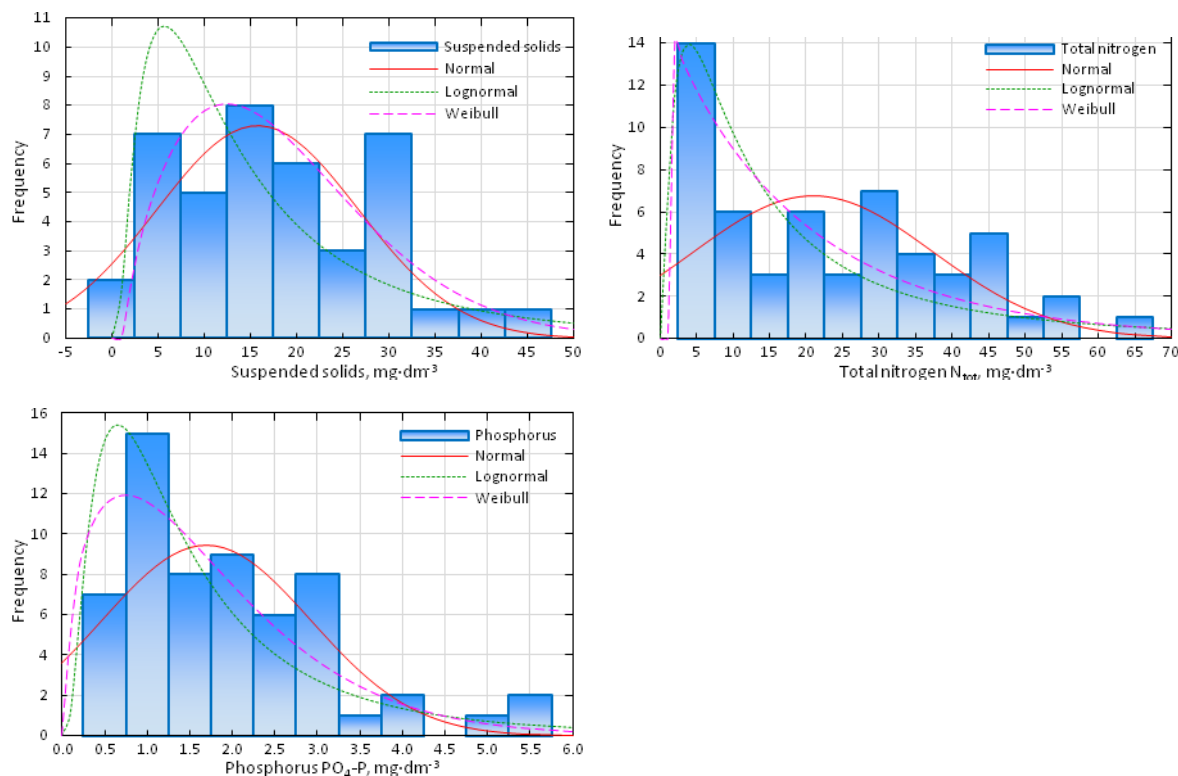


Figure 2. Histograms of the normal, lognormal and Weibull distributions of the empirical data

Based on the detailed analysis and evaluation of the WWTP, as reported above, its reliability was modelled using the Weibull distribution (Table 3, Fig. 3). This allowed us to compare our results with those obtained by other authors (Bugajski et al. 2012; Nastawny & Jucherski 2013; Wałęga 2009) who had used the same distribution. In addition, the indicators of the technological reliability of the treatment plant were also compared to values obtained from the lognormal distribution. The parameters of the Weibull distribution were calculated using the maximum likelihood estimation. In order to determine the goodness of fit of the Weibull distribution to the empirical data described by the distribution parameters (Table 3), the Hollander–Proschan test was applied. As can be seen from Table 3, the goodness of fit of the obtained distributions was high and ranged from 72 to 98% at a significance level of 0.05 (Table 3).

Table 3. Parameters of the Weibull distribution and the Hollander–Proschan goodness-of-fit test

Parameter	Parameters of Weibull distribution			Hollander–Proschan goodness-of-fit test	
	Location	Shape	Scale	stat	p
BOD <sub>5</sub>	0.3182	1.2479	3.6602	0.2150	0.8297
COD	2.4697	1.5798	28.5112	0.0200	0.9840
Suspended solids	-0.6212	1.6638	19.2133	-0.1235	0.9017
Total nitrogen N <sub>tot</sub>	1.2364	0.9844	19.5929	-0.3558	0.7220
Phosphorus PO <sub>4</sub> -P	0.0707	1.3664	1.7796	0.0411	0.9672

Symbols: stat - value of the statistic test, p - significance level of the test; when  $p \leq 0.05$  the distribution of data is not Weibull distribution

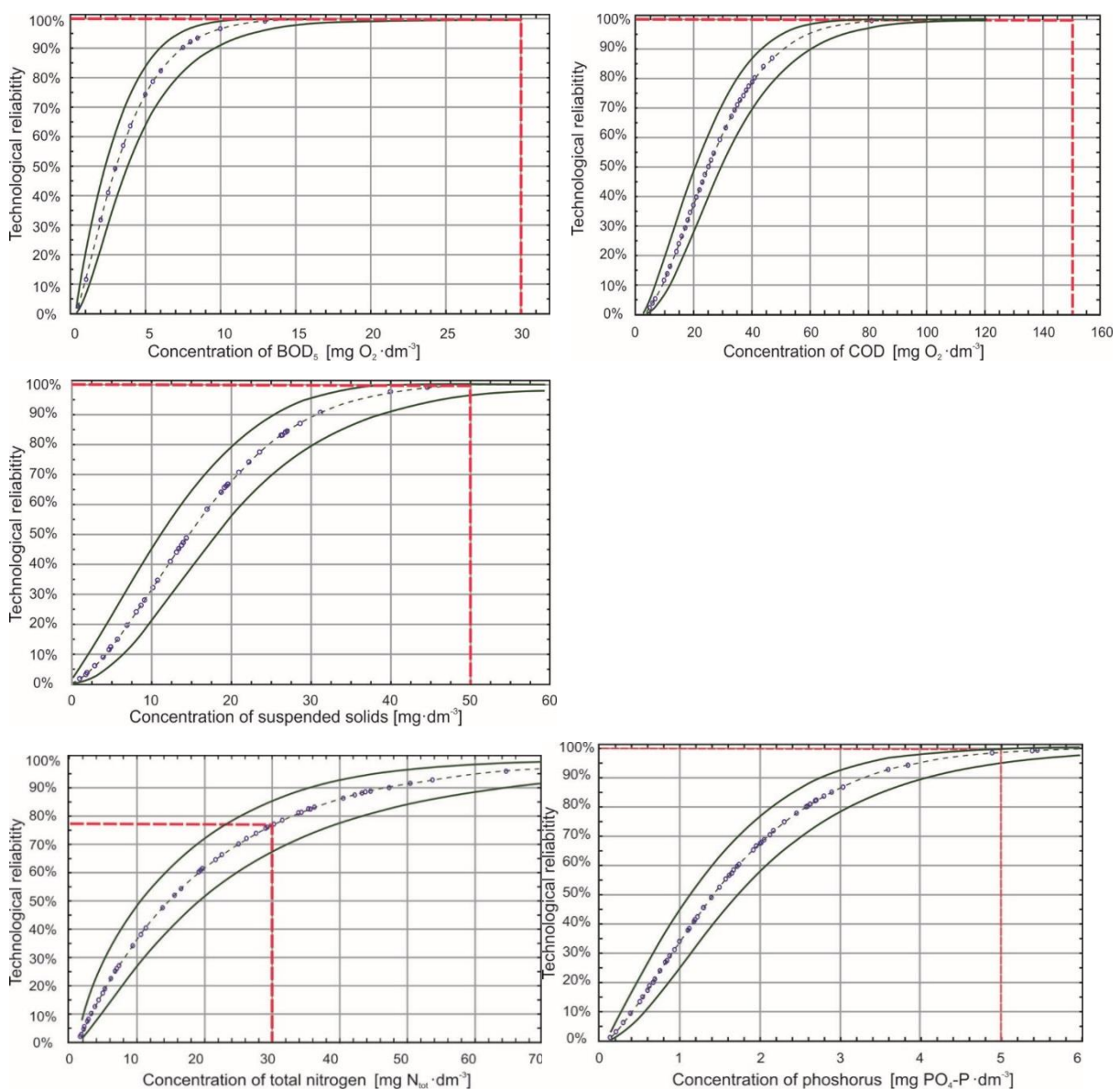


Figure 3. Weibull cumulative distribution functions and the technological reliabilities determined for each pollution parameter with estimated confidence intervals of 95.0%

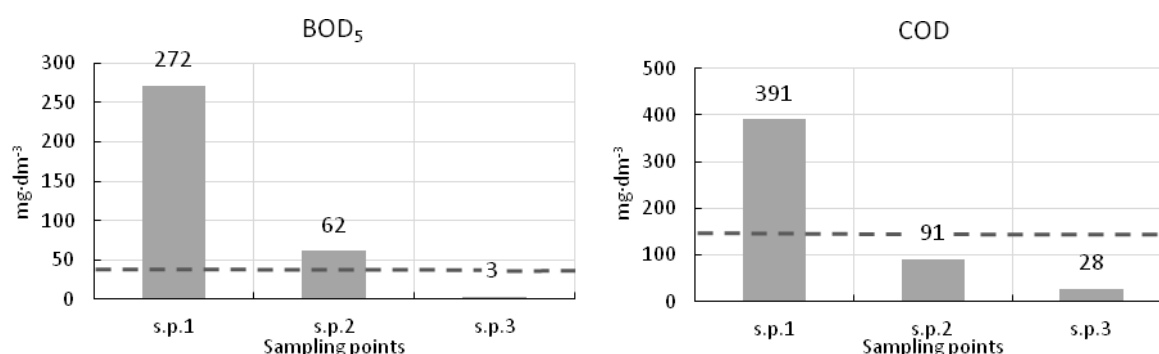


The technological reliabilities of the installation determined by the Weibull distribution function compared to the lognormal distribution are given in Table 4. It was shown that the reliability of reducing BOD<sub>5</sub> and COD concentrations was 100% both for the lognormal as well as the Weibull distribution functions. For other pollutants, the reliabilities of the treatment plant described by the lognormal distribution and the Weibull distribution were slightly lower at 92.6% and 99.5% for TSS, 77.0% and 76.8% for N<sub>tot</sub>, and 95.2% and 98.2% for phosphorus PO<sub>4</sub>-P, respectively (Fig. 3, Table 4).

Table 4. The technological reliability of the facility for wastewater treatment [in %] determined using the Weibull and the lognormal distribution functions

Parameter	Weibull distribution	Lognormal distribution
BOD <sub>5</sub>	100	100
COD	100	100
Suspended solids	99.5	92.6
Total nitrogen N <sub>tot</sub>	76.8	77.0
Phosphorus PO <sub>4</sub> -P	98.2	95.2

The results of this study demonstrate that the wastewater treatment processes were stable and reliable as well as very effective. As shown by the graphs in Figure 4 and the Helsinki Commission Recommendation (HELCOM 2007) data in Table 5, the average values of the parameters of the treated wastewater met the Polish requirements (Regulation of the Polish Minister of Environment 2014). Therefore, treated wastewater could be discharged into the environment throughout the year, with soil receiver sites being preferred over other receiver bodies.



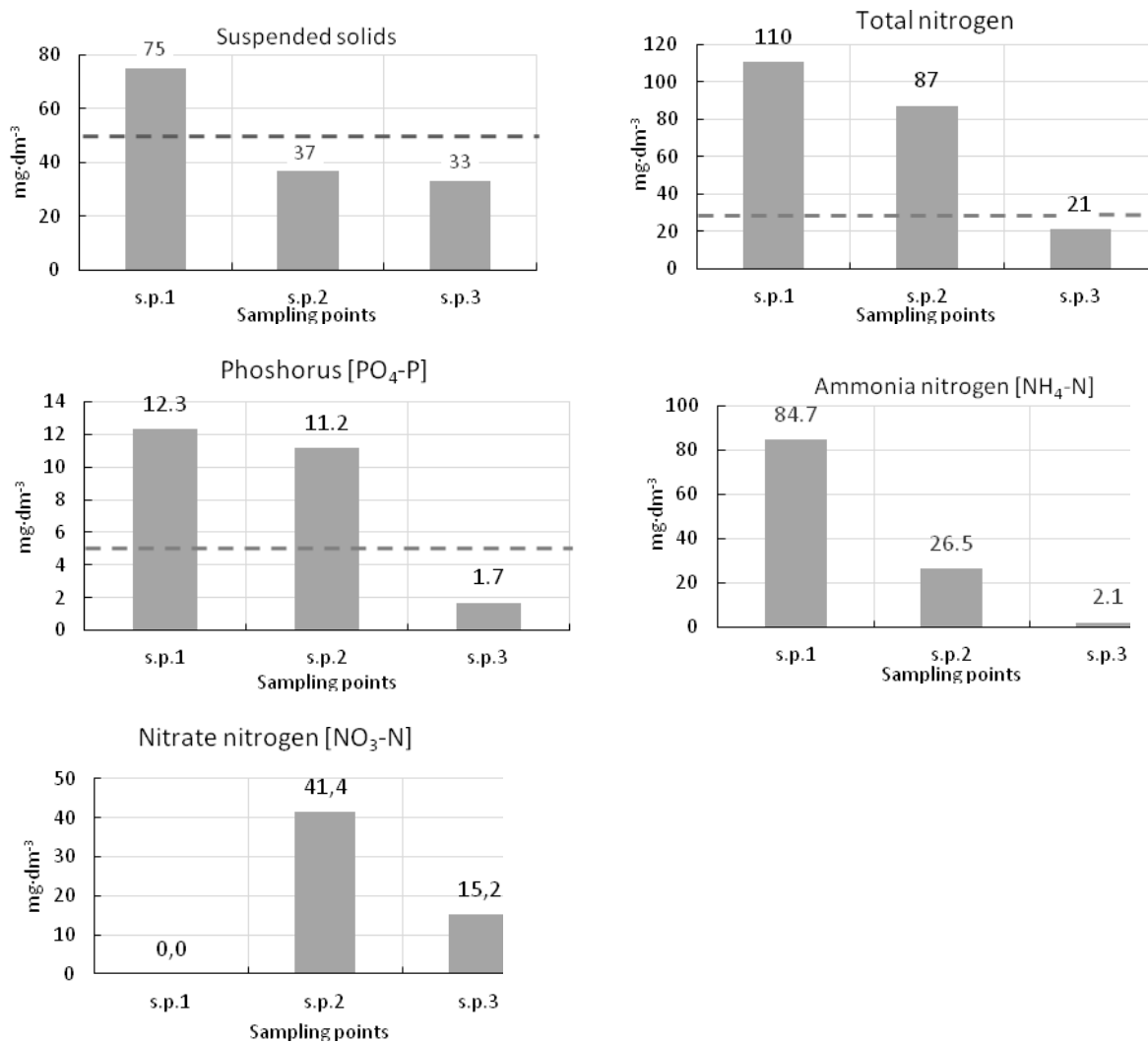


Figure 4. Dynamics of reduction of the mean pollutant concentrations in the successive treatment steps .

Table 5. The specific loads of pollutants in treated wastewater – median values [g·PE<sup>-1</sup>·d<sup>-1</sup>]

Specification	Sampling points		
	s.p.1	s.p.2	s.p.3
BOD <sub>5</sub>	35	7	0.4*
COD	354	13	3.8
N <sub>tot</sub>	16.0	13.4	3.0*
NH <sub>4</sub> -N	12.6	3.8	0.06
PO <sub>4</sub> -P	1.7	1.5	0.23*

\*HELCOM Recommendation 28E/6 (2007): BOD<sub>5</sub>, 8 g·PE<sup>-1</sup>·d<sup>-1</sup>; N<sub>tot</sub>, 10 g·PE<sup>-1</sup>·d<sup>-1</sup>; P<sub>tot</sub>, 0.65 g·PE<sup>-1</sup>·d<sup>-1</sup>

Compared to the technological reliabilities of domestic wastewater treatment plants evaluated by other authors (Bugajski et al. 2012, Wałęga et al. 2008), the installation

investigated in this study was much more efficient and reliable as far as the removal of pollutants was concerned. The reliability of reducing the levels of organic matter in wastewater was 100% for BOD<sub>5</sub> and COD and more than 92% for suspended solids. The corresponding values for the treatment plant Biocompact BCT S-12 (with activated sludge) were 68% (BOD), 88% (COD) and 62% (suspended solids) (Bugajski et al. 2012). In the case of the domestic treatment plant RetroFAST (with an aerated biological filter) the reliability values were 85%, 89% and 92%, respectively (Wałęga et al. 2008). Wastewater from individual rural households collected in septic tanks is characterized by several times higher concentrations of pollutants than wastewater discharged by municipal sewage systems. The results of a two-year monitoring study of the quality of wastewater, conducted in one of Polish villages are shown in Table 6.

Table 6. Data on pollutant concentrations in wastewater outflowing from septic tanks in a village in Poland. A two-year monitoring study.

Parameter	Number of samples	Mean	Median	Minimum	Maximum	Standard deviation	Coefficient of variation	Mean values in municipal wastewater
		mg dm <sup>-3</sup>	mg dm <sup>-3</sup>	mg dm <sup>-3</sup>	mg dm <sup>-3</sup>	mg dm <sup>-3</sup>	%	mg dm <sup>-3</sup>
BOD <sub>5</sub>	147	521.1	460.0	100.0	1300.0	236.0	45.3	197
COD	149	866.3	811.0	251.0	1754.0	295.6	34.1	393
Suspended solids	149	205.5	140.0	45.6	3060.0	272.9	132.8	116
Total nitrogen N <sub>tot</sub>	149	150.1	145.7	28.3	323.5	50.1	33.4	36
Ammonia nitrogen NH <sub>4</sub> -N	149	109.9	101.9	18.4	280.1	40.3	36.7	25
Phosphorus PO <sub>4</sub> -P	149	16.5	15.9	2.5	30.7	5.3	32.1	6

Due to this fact, the technological set up of a single-family WWTP (below 50 PE) needs to be characterized by a very high pollutant removal efficiency as well as a very high resistance to the these fluctuations. Such requirements are practically impossible to meet using container WWTPs with activated sludge or trickling filters. By contrast, hybrid systems equipped with beds built as treatment wetlands can easily adapt to such fluctuations and ensure stable removal of pollutants from wastewater.

As far as BOD<sub>5</sub> and COD are concerned, the analyzed installation worked without technological failures over the whole 10-year study period. For suspended solids, the probability of occurrence of failure events (effluent quality parameters higher than permitted)

1 was 2 days per year and for phosphorus 7 days per year. The technological reliability of total  
2 nitrogen removal was much lower (76.8%), with as many as 85 failure days during the whole  
3 year. The hybrid treatment plant had operated continuously for more than 10-years and had  
4 been maintained to ensure constant operational availability. The yearly removal efficiency of  
5 pollutants was sensitive only to a slight periodic variability of both hydraulic and pollution  
6 loads caused by tourists staying at the farm during vacation periods. The plant had never been  
7 observed to freeze in winter thanks to the snow cover, and the only decrease in average  
8 efficiency in the cold season concerned the removal of  $N_{tot.}$ (18%) (Jucherski & Walczowski  
9 2012). These malfunctions occurred in winter when the weather conditions were not  
10 conducive to efficient denitrification of  $NO_3-N$ , which was the dominant form of nitrogen in  
11 the effluent (Fig. 4). By contrast, the installation showed a very high rate of conversion of  
12 ammonium nitrogen. The average concentration of  $NH_4-N$  did not exceed  $2.1 \text{ mg} \cdot \text{dm}^{-3}$  over  
13 the entire research period. In order to increase the efficiency of tertiary wastewater treatment  
14 in winter seasons and thereby improve the overall pollutant removal efficiency of the WWTP,  
15 further efforts have to be made at re-designing and re-building the existing filter bed.  
16

17  
18 To summarize, the installation tested can be particularly recommended for use in  
19 mountainous regions, where streams and rivers as well as underground waters are very  
20 sensitive to pollution and, therefore, require higher levels of protection. The high reliability of  
21 this type of wastewater treatment plants is a consequence of the application of a hybrid  
22 configuration of facilities which is characterized by an increased technological inertia in the  
23 multi-staged wastewater treatment process (Jucherski 2007). The number and configuration of  
24 the facilities constituting the wastewater treatment installation have been chosen so as to  
25 ensure the stability of the process under changeable weather conditions and variable pollutant  
26 loads in raw wastewater. The advantages of the investigated installation include simple  
27 operation, low power consumption and low operating costs. One disadvantage is that,  
28 compared to a container WWTP, the system occupies a slightly larger surface area, which,  
29 however, does not limit its application, especially in rural (Nastawny & Jucherski 2013) or  
30 protected areas (Jóźwiakowski et al. 2014, Jóźwiakowski et al. 2016). The design  
31 and structure of the test facility make it especially suitable for use in sloping terrain with large  
32 inclines typical of mountainous regions.  
33  
34  
35  
36  
37  
38  
39  
40  
41  
42  
43  
44  
45  
46  
47  
48  
49  
50  
51

## CONCLUSIONS

This study showed that the technological solutions applied in the investigated installation for the treatment of wastewater produced by an eco-tourist mountain farm, proved to be very

1  
2  
3  
4  
5  
6  
7  
8  
9  
10  
11  
12  
13  
14  
15  
16  
17  
18  
19  
20  
21  
22  
23  
24  
25  
26  
27  
28  
29  
30  
31  
32  
33  
34  
35  
36  
37  
38  
39  
40  
41  
42  
43  
44  
45  
46  
47  
48  
49  
50  
51

effective and reliable during the whole 10-year period of operation. The long-term median concentration values of effluent pollutants ( $BOD_5 - 2.5 \text{ mg O}_2 \cdot \text{dm}^{-3}$ ,  $COD - 25.0 \text{ mg O}_2 \cdot \text{dm}^{-3}$ ,  $N_{\text{tot}} - 19.5 \text{ mg} \cdot \text{dm}^{-3}$ ,  $PO_4\text{-P} - 1.5 \text{ mg} \cdot \text{dm}^{-3}$  and suspended solids  $- 14.0 \text{ mg} \cdot \text{dm}^{-3}$ ) were lower than permitted by the Polish Regulation (2014). At the same time, the specific loads of pollutants in the effluent were much lower than those specified in the HELCOM Recommendation.

The technological reliability of the tested installation (100% for both  $BOD_5$  and COD removal, over 90% for the removal of  $PO_4\text{-P}$  and total suspended solids, and 77% for total-nitrogen removal) calculated with the Weibull method, confirmed that the treatment plant could be used as an effective tool for protecting the quality of local water resources (especially in ecologically valuable mountainous areas) regardless of changeable weather conditions and variable loads of pollutants characteristic of individual wastewater management in rural regions.

The statistical methods based on the Weibull as well as the lognormal data distributions describe very well the degree of stability and technological reliability of treatment processes, and the differences between them in estimating reliability are negligible.

The Weibull method is especially well-suited for comparing the specific functional features of various types of rural domestic wastewater treatment plants, but the log-normal distribution can also be used.

## REFERENCES

- Bugajski, P., Wałęga, A. & Kaczor G. 2012 Application of the Weibull reliability analysis of household sewage treatment plant. *Gaz, Woda i Technika Sanitarna* **2**, 56–58 (in Polish).
- Djeddou, M. & Achour B. 2015. Wastewater treatment plant reliability prediction using artificial neural networks. In: *12th IWA Specialised Conference on Design, Operation and Economics of Large Wastewater Treatment Plants*, September 6-9, 2015, Prague, Czech Republic.
- Eisenberg, D., Soller, J., Sakaji, R. & Olivieri A. 2001 A methodology to evaluate water and wastewater treatment plant reliability. *Water Sci. Technol.* **43** (10), 91–99.
- Gajewska, M., Józwiakowski, K., Ghrabi, A. & Masi F. 2015 Impact of influent wastewater quality on nitrogen removal rates in multistage treatment wetlands. *Environ. Sci. Pollut. Res.* **22**, 12840-1284.

- 1  
2  
3  
4  
5  
6  
7  
8  
9  
10  
11  
12  
13  
14  
15  
16  
17  
18  
19  
20  
21  
22  
23  
24  
25  
26  
27  
28  
29  
30  
31  
32  
33  
34  
35  
36  
37  
38  
39  
40  
41  
42  
43  
44  
45  
46  
47  
48  
49  
50  
51
- Gizińska-Górna, M., Czekala, W., Józwiakowski, K., Lewicki, A., Dach, J., Marzec, M., Pytka, A., Janczak, D., Kowalczyk-Juško, A., Listosz, A. 2016. The possibility of using plants from hybrid constructed wetland wastewater treatment plants for energy purposes. *Ecol. Eng.* **95**, 534-541.
- HELCOM Recommendation 28E/6. Adopted 15 November 2007 having regard to article 20, Paragraph 1 b) of the Helsinki Convention. *On-site wastewater treatment of single family homes, small businesses and settlements up to 300 Person Equivalent (P.E.)*.
- Jucherski, A. 2007 The quality of farm house-hold wastewater treatment in quasi-technical farmstead installation of IBMER model, in winter period on the mountainous terrain. *Probl. Inż. Rol.* **2 (56)**, 51–60 (in Polish).
- Jucherski, A. & Walczowski A. 2012 Quasi-technical sewage treatment plants in protection of the water resources on rural mountain terrains. *Probl. Inż. Rol.* **3 (77)**, 151–158 (in Polish).
- Józwiakowski, K., Marzec, M., Gizińska-Górna, M., Pytka, A., Skwarzyńska, A., Gajewska, M., Słowik, T., Kowalczyk-Juško, A., Steszuk, A., Grabowski, T. & Szawara, Z. 2014 The concept of construction of hybrid constructed wetland for wastewater treatment in Roztoczański National Park. *Barometr Regionalny* **12 (4)**, 91-102.
- Józwiakowski, K., Mucha, Z., Generowicz, A., Baran, S., Bielińska, J. & Wójcik, W. 2015 The use of multi-criteria analysis for selection of technology for a household WWTP compatible with sustainable development, *Arch. Environ. Prot.* **3**, 76-82.
- Józwiakowski, K., Gajewska, M., Marzec, M., Gizińska-Górna, M., Pytka, A., Kowalczyk-Juško, A., Sosnowska, B., Baran, S., Malik, A., Kufel, R. 2016. *Hybrid constructed wetlands for the National Parks - a case study, requirements, dimensioning, preliminary results*. In: Natural and Constructed Wetlands. Nutrients, heavy metals and energy cycling, and flow. Springer International Publishing Switzerland, Vymazal, J. (Eds.), 247-265.
- Masi, F., Martinuzzi, N., Bresciani, R., Giovannelli, L. & Conte, G. 2007. Tolerance to hydraulic and organic load fluctuations in constructed wetlands. *Water Sci. Technol.* **56 (3)**, 39-48.
- Masi, F., Caffaz, S. & Ghrabi, A. 2013 Multi-stage constructed wetlands systems for municipal wastewater treatment, *Water Sci. Technol.* **67**, 1590–1598.
- Massoud, M. A., Tarhini, A. & Nasr, J. A. 2009 Decentralized approaches to wastewater treatment and management: Applicability in developing countries. *J. Environ. Manage.* **90 (1)**, 652–659.

- 1  
2  
3  
4  
5  
6  
7  
8  
9  
10  
11  
12  
13  
14  
15  
16  
17  
18  
19  
20  
21  
22  
23  
24  
25  
26  
27  
28  
29  
30  
31  
32  
33  
34  
35  
36  
37  
38  
39  
40  
41  
42  
43  
44  
45  
46  
47  
48  
49  
50  
51
- Nastawny, M. & Jucherski, A. 2013 Assessing technical reliability of an on-site sewage treatment plant with filtration bed system, by using modified Weibull's method. *Probl. Inż. Rol.* **2 (80)**, 165–175 (in Polish).
- Niku, S., Schroeder, E.D. & Haugh, R.S. 1982 Reliability and stability of trickling filter processes. *J. Water Pollut. Control. Fed.* **54 (2)**, 129–134.
- Oliveira, S. C. & Sterling, M. V. 2008 Reliability analysis of wastewater treatment plants. *Water Res.* **42**, 1182–1194.
- Osaliya, R., Kansime, F. Oryem-Origa, H. & Kateyo, E. 2011 The potential use of storm water and effluent from a constructed wetland for re-vegetating a degraded pyrite trail in Queen Elizabeth National Park, Uganda. *Physics and Chemistry of the Earth, Parts A/B/C* **36 (14-15)**, 842-852.
- Platzer, C. & Mauch, K. 1997 Soil clogging in vertical flow reed beds - mechanisms, parameters, consequences and.....solutions? *Water Sci. Technol.* **35 (5)**, 175–181.
- Regulation of the Minister of Environment on 24.07.2014. On the conditions to be met when sewage into water or soil and on substances particularly harmful to the aquatic environment, Dz. U. nr 239 poz. 1800 (in Polish).
- Sanchez-Ramos, D., Sánchez-Emeterio, G. & Beltrán, M. F. 2015 Changes in water quality of treated sewage effluents by their receiving environments in Tablas de Daimiel National Park, Spain. *Environ. Sci. Pollut. Res.* **23 (7)**, 6082-6090.
- Wałęga, A. 2009 Assessment of the wastewater treatment plants statistical methods. *Forum eksploatacja* **5 (44)**, 30–34 (in Polish).
- Wałęga, A., Miernik, W. & Kozień, T. 2008 The efficiency of a domestic sewage treatment plant type RetroFAST. *Przemysł Chemiczny* **87 (5)**, 210–212 (in Polish).
- Wojciechowska, E., Gajewska, M. & Ostojki, A. 2016. Reliability of nitrogen removal processes in multistage treatment wetlands receiving high-strength wastewater, *Ecol. Eng.* **98**, 365-371.



## Assessment of the technological reliability of a hybrid constructed wetland for wastewater treatment in a mountain eco-tourist farm in Poland

Andrzej Jucherski<sup>1</sup>, Maria Nastawny<sup>1</sup>, Andrzej Walczowski<sup>1</sup>,  
Krzysztof Józwiakowski<sup>2</sup> and Magdalena Gajewska<sup>3</sup>

<sup>1</sup>*Mountain Centre of Studies and Implementations in Tylicz, Institute of Technology and Life Sciences  
in Falenty, Pułaskiego St. 25A, 33-383 Tylicz, POLAND*

<sup>2</sup>*Department of Environmental Engineering and Geodesy, University of Life Sciences in Lublin,  
Leszczyńskiego 7, 20-069 Lublin, POLAND ([krzysztof.jozwiakowski@up.lublin.pl](mailto:krzysztof.jozwiakowski@up.lublin.pl))*

<sup>3</sup>*Department of Water and Wastewater Technology, Gdańsk University of Technology, Narutowicza st.  
11/12, 80-233, Gdańsk, POLAND*

### ABSTRACT

The aim of the present study was to assess the technological reliability of a domestic hybrid wastewater treatment installation consisting of a classic three-chambered (volume 6m<sup>3</sup>) septic tank, a vertical flow (VF) trickling bed filled with granules of a calcinated clay material (KERAMZYT), a special wetland bed constructed on a slope, and a permeable pond used as a receiver. The test treatment plant was located at a mountain eco-tourist farm on the periphery of the spa municipality of Krynica-Zdrój, Poland. The plant's operational reliability in reducing the concentration of organic matter measured as BOD<sub>5</sub> and COD, was 100% when modelled by both the Weibull and the lognormal distributions. The respective reliability values for total nitrogen removal were 76.8% and 77.0%, total suspended solids – 99.5% and 92.6 %, and PO<sub>4</sub>-P – 98.2% and 95.2%, with the differences being negligible. The installation was characterized by a very high level of technological reliability when compared to other solutions of this type. The Weibull method employed for statistical evaluation of technological reliability can also be used for comparison purposes. From the ecological perspective, the facility presented in the study has proven to be an effective tool for protecting local aquifer areas.

**Key words:** mountain aquifers, rural areas, cold climate, hybrid constructed wetland, technological reliability

### INTRODUCTION

Evaluation of the technological reliability of individual wastewater treatment systems should be an important part of planning and decision-making in water and wastewater management, particularly now, when a wide range of technological solutions are available (Józwiakowski et al. 2015). Reliable operation of wastewater treatment units must be ensured due to both environmental and human health protection concerns (Eisenberg et al. 2001; Wojciechowska et al 2016). Reliable operation of domestic wastewater treatment plants is especially important in mountain aquifer areas, which are very sensitive to pollution. Mountainous regions in Poland play a key role in developing and sustaining vital socio-economical and environmental functions which intertwine in the activities of spa and tourist resorts, forest management, environment-friendly farming and especially in hydrology.



1  
2  
3  
4  
5  
6  
7  
8  
9  
10  
11  
12  
13  
14  
15  
16  
17  
18  
19  
20  
21  
22  
23  
24  
25  
26  
27  
28  
29  
30  
31  
32  
33  
34  
35  
36  
37  
38  
39  
40  
41  
42  
43  
44  
45  
46  
47  
48  
49  
50  
51  
Although Polish mountainous areas have a high water production potential, as manifested by an almost 40% regional surplus in relation to the water discharged by all the rivers, Poland occupies one of the last positions in Europe in terms of the total freshwater resources, which are estimated at 1630 m<sup>3</sup>·year<sup>-1</sup>·person<sup>-1</sup>. Therefore, it is essential that groundwater and the upper reaches of local streams and mountain rivers should be protected against biological, chemical and bacteriological pollution resulting from the discharge of untreated domestic sewage to the environment in rural areas. One of the key issues in technological progress in wastewater management in rural, environmentally valuable areas, is the construction of small domestic or local wastewater treatment plants with a high, long-term reliability and effectiveness in reducing wastewater pollutions (Jucherski & Walczowski 2012; Masi et al. 2013; Józwiakowski et al. 2016; Gajewska et al. 2015).

Nowadays, more and more innovative wastewater treatment systems are being designed and offered on the market, which spurs the need for developing a universal method of assessing the reliability of the various treatment processes and facilities. Such a method would be helpful in planning and comparing the levels of protection offered by the various technologies (Józwiakowski et al. 2015).

The methods for determining the reliability of individual wastewater treatment systems have been described in more detail by Eisenberg et al. (2001). Lately Djeddou & Achour (2015) have proposed a method for predicting reliability using artificial neural networks.

A comprehensive and useful assessment of the reliability of domestic wastewater treatment plants should be based on a series of measurements and observations of treatment variability under normal and critical operating conditions as well as the probability of mechanical failures and their impact on the quality of the treated wastewater (Eisenberg et al. 2001).

Reliability is defined as the probability of achieving required performance of a wastewater treatment plant (WWTP) over a specific time and under specific conditions (Oliveira & Sterling 2008). To assess WWTP, a coefficient of reliability (CR) which relates mean pollutant concentrations to effluent standards (Niku et al. 1982) can also be used.

The statistical step in the assessment of WWTP reliability presented in this article is based on the normal (Niku et al. 1982), the lognormal (Oliveira & Sterling 2008) and the Weibull distributions (Bugajski et al. 2012; Nastawny & Jucherski 2013; Wałęga 2009). Statistical distributions of probability are used to establish the probability of occurrence of selected values of pollutants. Recent findings reported in the literature (Bugajski et al. 2012; Bugajski

1  
2  
3  
4  
5  
6  
7  
8  
9  
10  
11  
12  
13  
14  
15  
16  
17  
18  
19  
20  
21  
22  
23  
24  
25  
26  
27  
28  
29  
30  
31  
32  
33  
34  
35  
36  
37  
38  
39  
40  
41  
42  
43  
44  
45  
46  
47  
48  
49  
50  
51  
52  
53  
54  
55  
56  
57  
58  
59  
60  
61  
62  
63  
64  
65  
66  
67  
68  
69  
70  
71  
72  
73  
74  
75  
76  
77  
78  
79  
80  
81  
82  
83  
84  
85  
86  
87  
88  
89  
90  
91  
92  
93  
94  
95  
96  
97  
98  
99  
100  
101  
102  
103  
104  
105  
106  
107  
108  
109  
110  
111  
112  
113  
114  
115  
116  
117  
118  
119  
120  
121  
122  
123  
124  
125  
126  
127  
128  
129  
130  
131  
132  
133  
134  
135  
136  
137  
138  
139  
140  
141  
142  
143  
144  
145  
146  
147  
148  
149  
150  
151  
152  
153  
154  
155  
156  
157  
158  
159  
160  
161  
162  
163  
164  
165  
166  
167  
168  
169  
170  
171  
172  
173  
174  
175  
176  
177  
178  
179  
180  
181  
182  
183  
184  
185  
186  
187  
188  
189  
190  
191  
192  
193  
194  
195  
196  
197  
198  
199  
200  
201  
202  
203  
204  
205  
206  
207  
208  
209  
210  
211  
212  
213  
214  
215  
216  
217  
218  
219  
220  
221  
222  
223  
224  
225  
226  
227  
228  
229  
230  
231  
232  
233  
234  
235  
236  
237  
238  
239  
240  
241  
242  
243  
244  
245  
246  
247  
248  
249  
250  
251  
252  
253  
254  
255  
256  
257  
258  
259  
260  
261  
262  
263  
264  
265  
266  
267  
268  
269  
270  
271  
272  
273  
274  
275  
276  
277  
278  
279  
280  
281  
282  
283  
284  
285  
286  
287  
288  
289  
290  
291  
292  
293  
294  
295  
296  
297  
298  
299  
300  
301  
302  
303  
304  
305  
306  
307  
308  
309  
310  
311  
312  
313  
314  
315  
316  
317  
318  
319  
320  
321  
322  
323  
324  
325  
326  
327  
328  
329  
330  
331  
332  
333  
334  
335  
336  
337  
338  
339  
340  
341  
342  
343  
344  
345  
346  
347  
348  
349  
350  
351  
352  
353  
354  
355  
356  
357  
358  
359  
360  
361  
362  
363  
364  
365  
366  
367  
368  
369  
370  
371  
372  
373  
374  
375  
376  
377  
378  
379  
380  
381  
382  
383  
384  
385  
386  
387  
388  
389  
390  
391  
392  
393  
394  
395  
396  
397  
398  
399  
400  
401  
402  
403  
404  
405  
406  
407  
408  
409  
410  
411  
412  
413  
414  
415  
416  
417  
418  
419  
420  
421  
422  
423  
424  
425  
426  
427  
428  
429  
430  
431  
432  
433  
434  
435  
436  
437  
438  
439  
440  
441  
442  
443  
444  
445  
446  
447  
448  
449  
450  
451  
452  
453  
454  
455  
456  
457  
458  
459  
460  
461  
462  
463  
464  
465  
466  
467  
468  
469  
470  
471  
472  
473  
474  
475  
476  
477  
478  
479  
480  
481  
482  
483  
484  
485  
486  
487  
488  
489  
490  
491  
492  
493  
494  
495  
496  
497  
498  
499  
500  
501  
502  
503  
504  
505  
506  
507  
508  
509  
510  
511  
512  
513  
514  
515  
516  
517  
518  
519  
520  
521  
522  
523  
524  
525  
526  
527  
528  
529  
530  
531  
532  
533  
534  
535  
536  
537  
538  
539  
540  
541  
542  
543  
544  
545  
546  
547  
548  
549  
550  
551  
552  
553  
554  
555  
556  
557  
558  
559  
560  
561  
562  
563  
564  
565  
566  
567  
568  
569  
570  
571  
572  
573  
574  
575  
576  
577  
578  
579  
580  
581  
582  
583  
584  
585  
586  
587  
588  
589  
590  
591  
592  
593  
594  
595  
596  
597  
598  
599  
600  
601  
602  
603  
604  
605  
606  
607  
608  
609  
610  
611  
612  
613  
614  
615  
616  
617  
618  
619  
620  
621  
622  
623  
624  
625  
626  
627  
628  
629  
630  
631  
632  
633  
634  
635  
636  
637  
638  
639  
640  
641  
642  
643  
644  
645  
646  
647  
648  
649  
650  
651  
652  
653  
654  
655  
656  
657  
658  
659  
660  
661  
662  
663  
664  
665  
666  
667  
668  
669  
670  
671  
672  
673  
674  
675  
676  
677  
678  
679  
680  
681  
682  
683  
684  
685  
686  
687  
688  
689  
690  
691  
692  
693  
694  
695  
696  
697  
698  
699  
700  
701  
702  
703  
704  
705  
706  
707  
708  
709  
710  
711  
712  
713  
714  
715  
716  
717  
718  
719  
720  
721  
722  
723  
724  
725  
726  
727  
728  
729  
730  
731  
732  
733  
734  
735  
736  
737  
738  
739  
740  
741  
742  
743  
744  
745  
746  
747  
748  
749  
750  
751  
752  
753  
754  
755  
756  
757  
758  
759  
760  
761  
762  
763  
764  
765  
766  
767  
768  
769  
770  
771  
772  
773  
774  
775  
776  
777  
778  
779  
780  
781  
782  
783  
784  
785  
786  
787  
788  
789  
790  
791  
792  
793  
794  
795  
796  
797  
798  
799  
800  
801  
802  
803  
804  
805  
806  
807  
808  
809  
810  
811  
812  
813  
814  
815  
816  
817  
818  
819  
820  
821  
822  
823  
824  
825  
826  
827  
828  
829  
830  
831  
832  
833  
834  
835  
836  
837  
838  
839  
840  
841  
842  
843  
844  
845  
846  
847  
848  
849  
850  
851  
852  
853  
854  
855  
856  
857  
858  
859  
860  
861  
862  
863  
864  
865  
866  
867  
868  
869  
870  
871  
872  
873  
874  
875  
876  
877  
878  
879  
880  
881  
882  
883  
884  
885  
886  
887  
888  
889  
890  
891  
892  
893  
894  
895  
896  
897  
898  
899  
900  
901  
902  
903  
904  
905  
906  
907  
908  
909  
910  
911  
912  
913  
914  
915  
916  
917  
918  
919  
920  
921  
922  
923  
924  
925  
926  
927  
928  
929  
930  
931  
932  
933  
934  
935  
936  
937  
938  
939  
940  
941  
942  
943  
944  
945  
946  
947  
948  
949  
950  
951  
952  
953  
954  
955  
956  
957  
958  
959  
960  
961  
962  
963  
964  
965  
966  
967  
968  
969  
970  
971  
972  
973  
974  
975  
976  
977  
978  
979  
980  
981  
982  
983  
984  
985  
986  
987  
988  
989  
990  
991  
992  
993  
994  
995  
996  
997  
998  
999  
1000

2014; Nastawny & Jucherski 2013; Wałęga 2009) show that the Weibull distribution is an accurate and precise tool for evaluation of WWTP reliability.

Systems for domestic wastewater management are individual facilities with technical and quasi-technical treatment devices designed to collect and treat wastewater to the extent required by specific regulations (Regulation of the Polish Minister of Environment 2014) as well as discharge it to receivers without adversely affecting the soil–water complex in the place where the facilities are located. In rural areas, individual treatment facilities usually operate without constant supervision and are therefore particularly exposed to fluctuations in efficiency due to a variable load pattern (Massoud et al. 2009; Platzer & Mauch 1997); in consequence, the quality of effluent often does not meet the requirements stipulated in the regulations in force.

Hybrid wetland systems have recently been more and more frequently used for the treatment of domestic wastewater from museum buildings and forester or mountain shelters, including those located in national parks. When well designed and properly maintained, they can achieve high pollutant removal efficiencies (Masi et al. 2007; Osaliya et al. 2011; Józwiakowski et al. 2014; Sanchez-Ramos et al. 2015; Gizińska-Górna et. 2016; Józwiakowski et al. 2016). The literature, however, provides little data on the reliability of pollutant removal processes in such CWS over long periods (years) of operation.

The aim of the present study was to assess the range of long-term fluctuations in treatment reliability in a domestic hybrid wastewater treatment plant. The plant had been built over ten years before on an eco-tourist farm in the mountain municipality and spa of Krynica-Zdrój in Poland and had been continuously operating since that time. The following indicators of wastewater contamination were measured: (i) BOD<sub>5</sub> and COD for contamination with organic matter, (ii) total suspended solids, (iii) total nitrogen (TN), and (iv) phosphorus PO<sub>4</sub>-P. The indicators results (pollutant concentrations) were compared to the Polish standards for treated wastewater (Regulation of the Polish Minister of Environment 2014) discharged into water and soil from treatment plants below 2000 PE.

## MATERIAL AND METHODS

The subject of the study was a hybrid wastewater treatment plant described in detail by Jucherski & Walczowski (2012). The plant was operated by an eco-tourist farm located in the rural peripheries of the spa town of Krynica-Zdrój, Poland. The plant had been monitored over the years 2005–2015. A schematic of the facility with the sampling points is presented in Fig. 1.

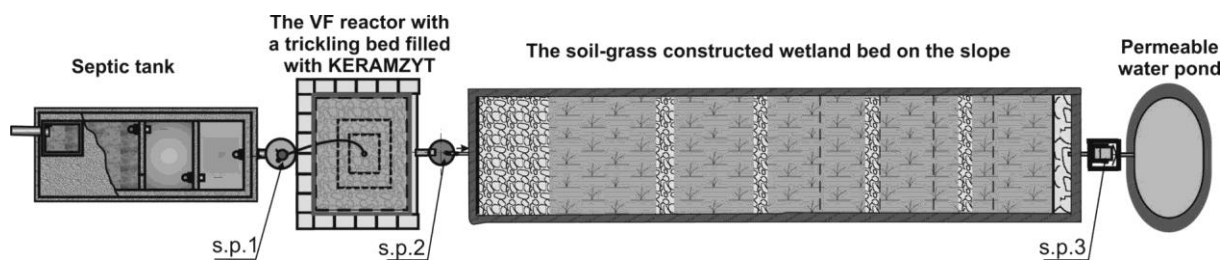


Figure 1. Schematic of the wastewater treatment installation (sampling points: s.p.1, s.p.2, s.p.3)

The installation consisted of a classic three-chamber septic tank, a vertical flow reactor (filter) followed by a special constructed wetland (SCW), and a permeable water pond as a receiver of the final effluent. The septic tank, with a capacity of  $6\text{m}^3$ , was a monolithic concrete structure designed to receive sewage with a seasonal variability from 3 to 15 persons (with an average of  $\text{PE}=5$ ). The substrate used in the vertical flow reactor were granules of a sintered clay material (KERAMZYT). To improve biological treatment and nitrification at the vertical stage, the wastewater was sprayed onto the surface of the reactor. Due to the harsh climate, it was necessary to use a cover to insulate the reactor from freezing in winter. Downstream of the reactor, there was a special filter bed (wetland) with subsurface flow, planted with a mix of reed sweet grass (*Glyceria maxima*), reed canary grass (*Phalaris arundinacea*) and other grasses spontaneously inhabiting the bed. The bed was constructed on a slope for tertiary treatment and removal of the remaining nutrients (N and P). The installation ended with a permeable pond for receiving and infiltration of the treated wastewater into the soil complex surrounding the treatment unit.

The average hydraulic load of the treatment plant in the investigation period was  $621.2\text{ dm}^3\cdot\text{day}^{-1}$ , and the average concentrations of pollutants in raw sewage were  $271.7\text{ mg O}_2\cdot\text{dm}^{-3}$  for  $\text{BOD}_5$ ,  $390.8\text{ mg O}_2\cdot\text{dm}^{-3}$  for COD,  $75.4\text{ mg}\cdot\text{dm}^{-3}$  for total suspended solids,  $110.5\text{ mg}\cdot\text{dm}^{-3}$  for total nitrogen, and  $12.3\text{ mg}\cdot\text{dm}^{-3}$  for phosphorus  $\text{PO}_4\text{-P}$  (Table 1). The flow of treated wastewater was calculated based on the water consumption reading of a water meter.  $\text{BOD}_5$  was determined using the OxiTop respirometric measuring system from WTW. COD, total nitrogen and phosphate phosphorus were determined using a Merck SQ118 photometer and a Merck thermoreactor TR-200. The total suspended solids were determined by a gravimetric method, in accordance with the standard PN-72/C-04559/02.

The statistical analysis was based on the normal, lognormal and Weibull distributions. Statistica v. 13.0 software was employed to define the characteristics of the distribution of the empirical data using the Kolmogorov-Smirnov goodness-of-fit test. Data were tested for

normality of distribution by measuring the distance between the empirical distribution and the theoretical distribution. The following null hypothesis was tested at 0.05 level of significance: distribution of the variable is normal/lognormal/Weibull. Furthermore the quality of fit of the Weibull distribution to empirical data was assessed using the Hollander–Proschan test for the significance level of 0.05. The reliability function  $R(x)$  was calculated as a complement to the cumulative distribution function using the following formula:

$$R(x) = 1 - F(x) \quad [1]$$

where  $x$  is an indicator of the concentration of pollutants in treated wastewater (Bugajski et al. 2012).

Reliability was determined from cumulative distribution plots, taking into consideration pollutant concentrations in treated wastewater permitted by the Regulation of the Polish Minister of Environment (2014), i.e.:  $BOD_5 \leq 40 \text{ mg O}_2 \cdot \text{dm}^{-3}$ ,  $COD \leq 150 \text{ mg O}_2 \cdot \text{dm}^{-3}$ , total suspended solids  $\leq 50 \text{ mg} \cdot \text{dm}^{-3}$ , total nitrogen  $\leq 30 \text{ mg} \cdot \text{dm}^{-3}$ , total phosphorus  $\leq 5 \text{ mg} \cdot \text{dm}^{-3}$ .

## RESULTS AND DISCUSSION

The many-year means of effluent contaminant concentrations in wastewater treated in the investigated installation ( $BOD_5 - 3.49 \text{ mgO}_2 \cdot \text{dm}^{-3}$ ,  $COD - 28.0 \text{ mgO}_2 \cdot \text{dm}^{-3}$ , suspended solids  $- 15.8 \text{ mg} \cdot \text{dm}^{-3}$ , total nitrogen  $- 20.9 \text{ mg} \cdot \text{dm}^{-3}$ , and phosphorus  $P-PO_4 - 1.70 \text{ mg} \cdot \text{dm}^{-3}$ ) (Table 1) were much lower than required by the Regulation (2014) on discharging wastewater into the soil or surface waters including lakes and their tributaries, and artificial water reservoirs situated on flowing waters.

Table 1 shows the basic statistics for pollutant concentration in wastewater.

Table 1. Basic statistics for pollutant concentrations in wastewater

Parameter		Number of samples	Mean	Median	Minimum	Maximum	Standard deviation	Coefficient of variation
			$\text{mg} \cdot \text{dm}^{-3}$	$\text{mg} \cdot \text{dm}^{-3}$	$\text{mg} \cdot \text{dm}^{-3}$	$\text{mg} \cdot \text{dm}^{-3}$	$\text{mg} \cdot \text{dm}^{-3}$	%
$BOD_5$	inlet	57	271.7	230	90	580	132.9	48.8
	outlet	49	3.49	2.5	0	13	2.92	83.6
COD	inlet	61	391	353	214	641	114.9	29.4
	outlet	55	28	25	5	112	17.6	63
Suspended solids	inlet	48	75.4	66	19	218.6	40.5	53.7
	outlet	41	15.8	14	0	44.6	10.9	69.2
Total nitrogen $N_{\text{tot}}$	inlet	61	110.5	105.5	70.3	193.8	19.5	17.6
	outlet	55	20.9	19.5	1.6	64.8	16.4	78.5
Phosphorus $PO_4\text{-P}$	inlet	65	12.3	11.1	7.6	24.9	3.97	32.3
	outlet	59	1.7	1.5	0.14	5.46	1.23	72.2

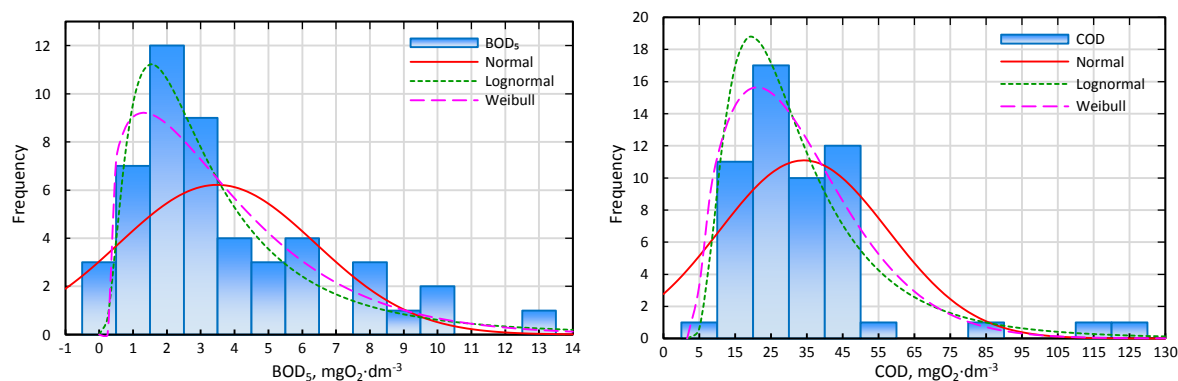
The effluent quality indicators were characterized by high coefficients of variation (Table 1) which, though statistically significant (and therefore useful for the evaluation of the treatment processes in the installation), were too low to have any relevance from the point of view of environmental protection. To determine the technological reliability of the treatment plant, a detailed statistical analysis was performed based on the distributions of the empirical data of each effluent contaminant. The normal, lognormal and Weibull distributions (Table 2, Fig. 2) were adjusted to data sets obtained during the 10-year study.

Table 2. The Kolmogorov-Smirnov goodness-of-fit statistics and significance levels for the analyzed empirical distributions

Distribution	Normal		Lognormal		Weibull	
	stat	p	stat	p	stat	p
BOD <sub>5</sub>	0.2076	0.0324	0.1118	0.5751	0.1354	0.3371
COD	0.1388	0.2183	0.0970	0.6427	0.1157	0.4208
TSS	0.0944	0.8454	0.1416	0.3786	0.1067	0.7262
Total nitrogen N <sub>tot</sub>	0.1422	0.1960	0.1604	0.1056	0.1085	0.5028
Phosphorus PO <sub>4</sub> -P	0.1093	0.4501	0.0926	0.6585	0.0507	0.9962

**Symbols:** stat – value of the statistic test, p – significance level of the test; when p is greater than 0.05, the distribution of empirical data can be described by the analyzed distribution

Statistical analysis using the Kolmogorov-Smirnov goodness-of-fit test showed that the Weibull and lognormal distributions could be well fitted to the empirical distributions of each pollution indicator, whereas the normal distribution gave a much worse fit, although it could also be used for most of the parameters, except BOD<sub>5</sub> (Table 2).



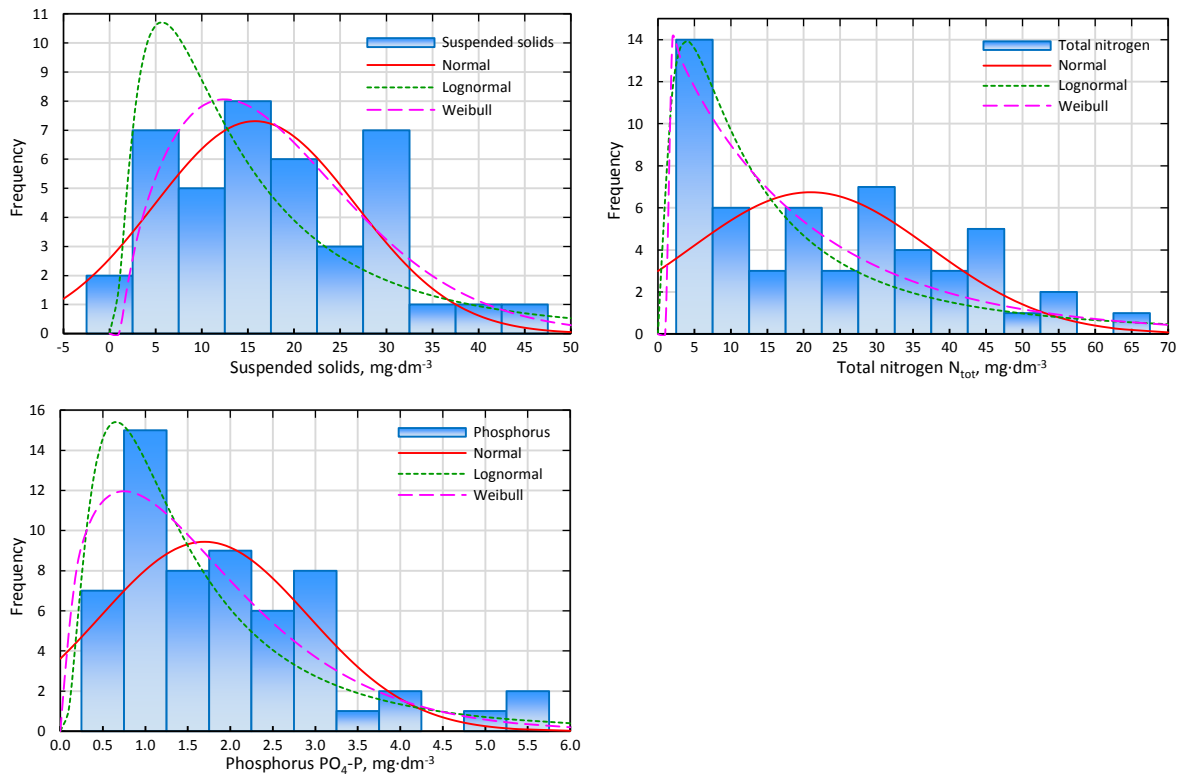


Figure 2. Histograms of the normal, lognormal and Weibull distributions of the empirical data

Based on the detailed analysis and evaluation of the WWTP, as reported above, its reliability was modelled using the Weibull distribution (Table 3, Fig. 3). This allowed us to compare our results with those obtained by other authors (Bugajski et al. 2012; Nastawny & Jucherski 2013; Wałęga 2009) who had used the same distribution. In addition, the indicators of the technological reliability of the treatment plant were also compared to values obtained from the lognormal distribution. The parameters of the Weibull distribution were calculated using the maximum likelihood estimation. In order to determine the goodness of fit of the Weibull distribution to the empirical data described by the distribution parameters (Table 3), the Hollander–Proschan test was applied. As can be seen from Table 3, the goodness of fit of the obtained distributions was high and ranged from 72 to 98% at a significance level of 0.05 (Table 3).

Table 3. Parameters of the Weibull distribution and the Hollander–Proschan goodness-of-fit test

Parameter	Parameters of Weibull distribution			Hollander–Proschan goodness-of-fit test	
	Location	Shape	Scale	stat	p
BOD <sub>5</sub>	0.3182	1.2479	3.6602	0.2150	0.8297
COD	2.4697	1.5798	28.5112	0.0200	0.9840
Suspended solids	-0.6212	1.6638	19.2133	-0.1235	0.9017
Total nitrogen N <sub>tot</sub>	1.2364	0.9844	19.5929	-0.3558	0.7220
Phosphorus PO <sub>4</sub> -P	0.0707	1.3664	1.7796	0.0411	0.9672

Symbols: stat - value of the statistic test, p - significance level of the test; when  $p \leq 0.05$  the distribution of data is not Weibull distribution

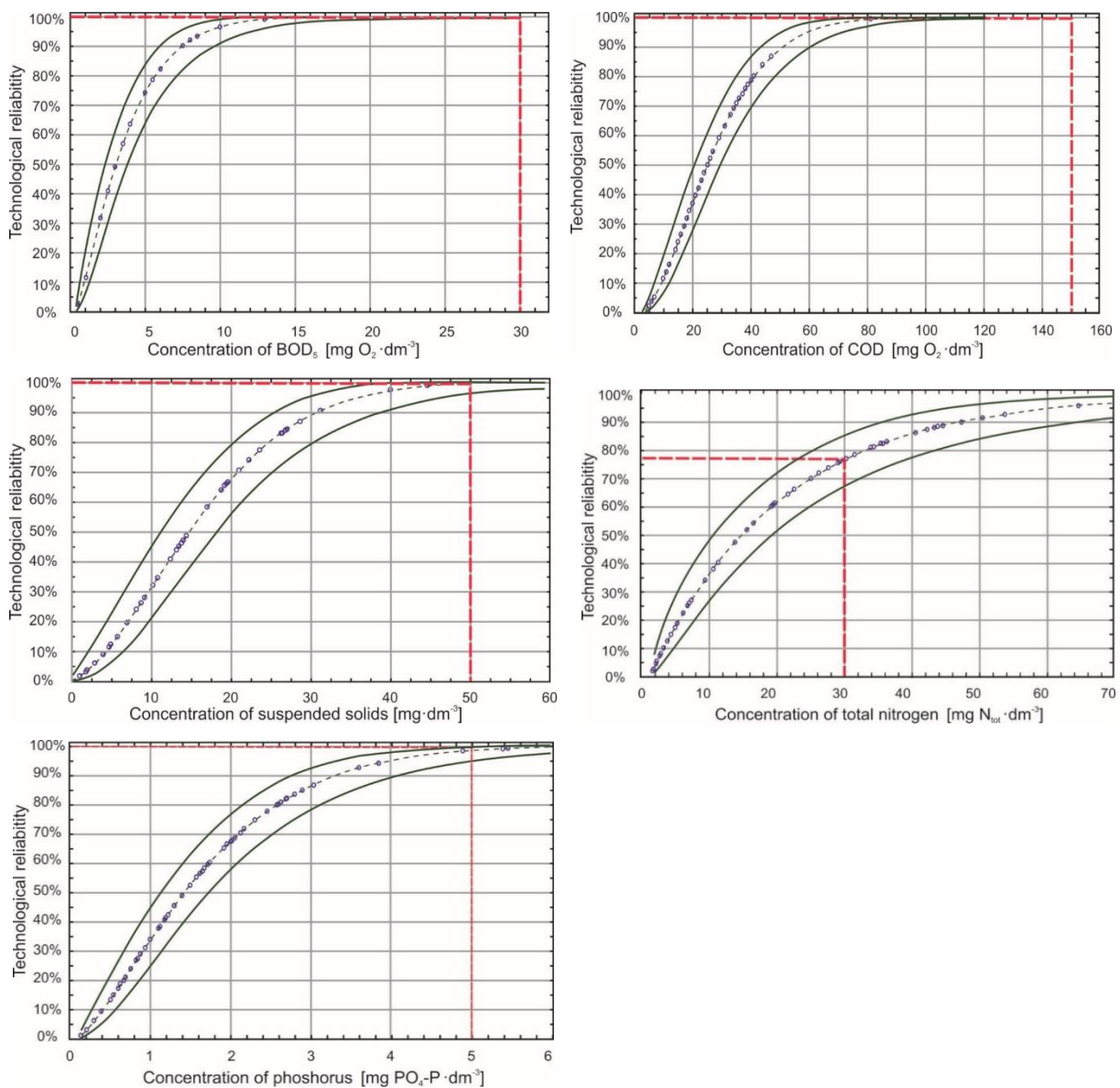


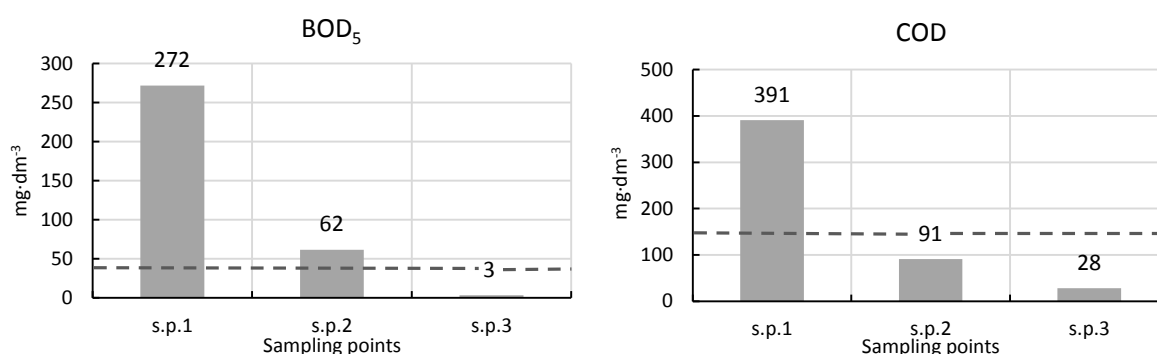
Figure 3. Weibull cumulative distribution functions and the technological reliabilities determined for each pollution parameter with estimated confidence intervals of 95.0%

The technological reliabilities of the installation determined by the Weibull distribution function compared to the lognormal distribution are given in Table 4. It was shown that the reliability of reducing BOD<sub>5</sub> and COD concentrations was 100% both for the lognormal as well as the Weibull distribution functions. For other pollutants, the reliabilities of the treatment plant described by the lognormal distribution and the Weibull distribution were slightly lower at 92.6% and 99.5% for TSS, 77.0% and 76.8% for N<sub>tot</sub>, and 95.2% and 98.2% for phosphorus PO<sub>4</sub>-P, respectively (Fig. 3, Table 4).

Table 4. The technological reliability of the facility for wastewater treatment [in %] determined using the Weibull and the lognormal distribution functions

Parameter	Weibull distribution	Lognormal distribution
BOD <sub>5</sub>	100	100
COD	100	100
Suspended solids	99.5	92.6
Total nitrogen N <sub>tot</sub>	76.8	77.0
Phosphorus PO <sub>4</sub> -P	98.2	95.2

The results of this study demonstrate that the wastewater treatment processes were stable and reliable as well as very effective. As shown by the graphs in Figure 4 and the Helsinki Commission Recommendation (HELCOM 2007) data in Table 5, the average values of the parameters of the treated wastewater met the Polish requirements (Regulation of the Polish Minister of Environment 2014). Therefore, treated wastewater could be discharged into the environment throughout the year, with soil receiver sites being preferred over other receiver bodies.





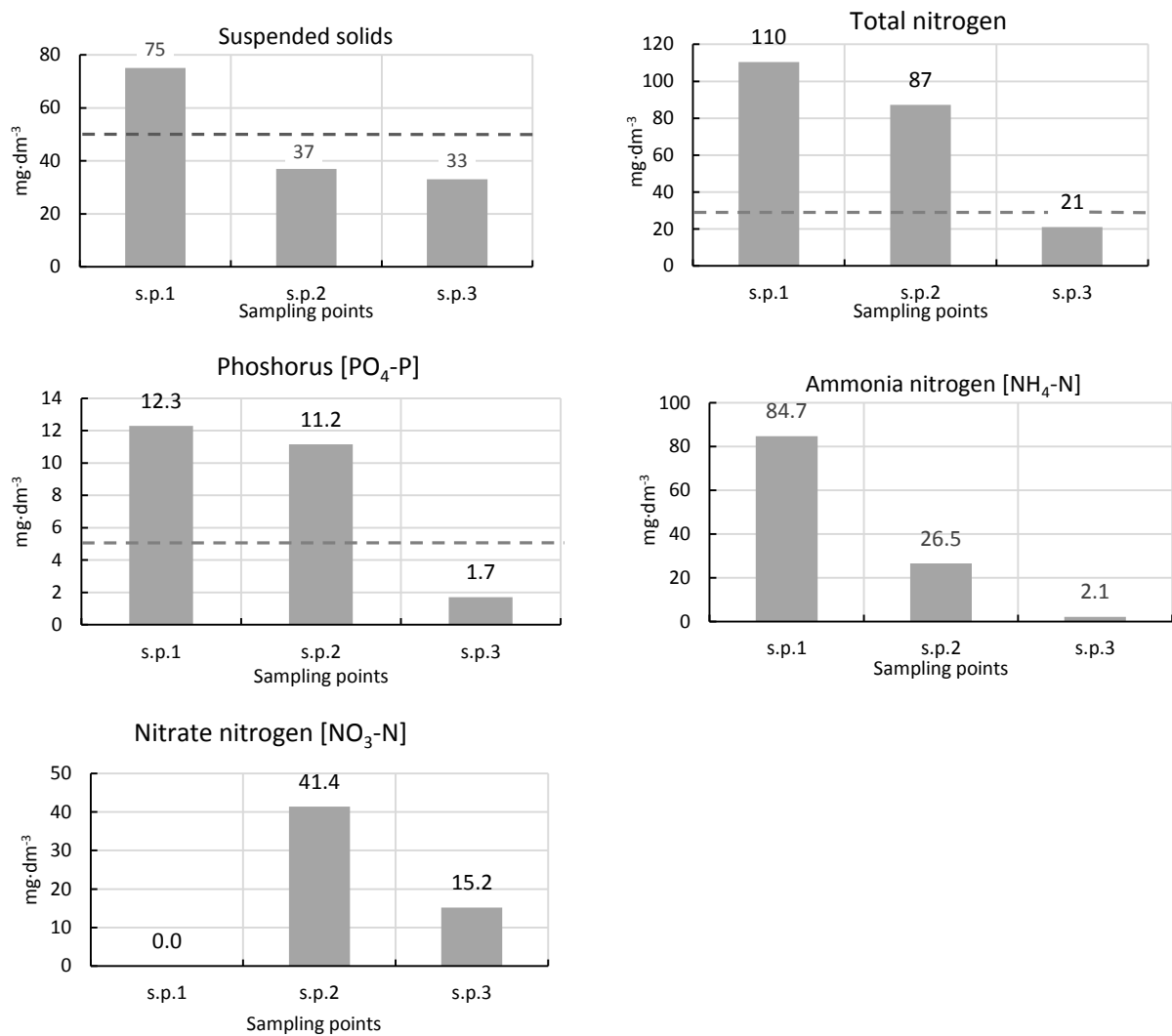


Figure 4. Dynamics of reduction of the mean pollutant concentrations in the successive treatment steps .

Table 5. The specific loads of pollutants in treated wastewater – median values [g·PE<sup>-1</sup>·d<sup>-1</sup>]

Specification	Sampling points		
	s.p.1	s.p.2	s.p.3
BOD <sub>5</sub>	35	7	0.4*
COD	354	13	3.8
N <sub>tot</sub>	16.0	13.4	3.0*
NH <sub>4</sub> -N	12.6	3.8	0.06
PO <sub>4</sub> -P	1.7	1.5	0.23*

\*HELCOM Recommendation 28E/6 (2007): BOD<sub>5</sub>, 8 g·PE<sup>-1</sup>·d<sup>-1</sup>; N<sub>tot</sub>, 10 g·PE<sup>-1</sup>·d<sup>-1</sup>; P<sub>tot</sub>, 0.65 g·PE<sup>-1</sup>·d<sup>-1</sup>

Compared to the technological reliabilities of domestic wastewater treatment plants evaluated by other authors (Bugajski et al. 2012, Wałęga et al. 2008), the installation

investigated in this study was much more efficient and reliable as far as the removal of pollutants was concerned. The reliability of reducing the levels of organic matter in wastewater was 100% for BOD<sub>5</sub> and COD and more than 92% for suspended solids. The corresponding values for the treatment plant Biocompact BCT S-12 (with activated sludge) were 68% (BOD), 88% (COD) and 62% (suspended solids) (Bugajski et al. 2012). In the case of the domestic treatment plant RetroFAST (with an aerated biological filter) the reliability values were 85%, 89% and 92%, respectively (Wałęga et al. 2008). Wastewater from individual rural households collected in septic tanks is characterized by several times higher concentrations of pollutants than wastewater discharged by municipal sewage systems. The results of a two-year monitoring study of the quality of wastewater, conducted in one of Polish villages are shown in Table 6.

Table 6. Data on pollutant concentrations in wastewater outflowing from septic tanks in a village in Poland. A two-year monitoring study.

Parameter	Number of samples	Mean	Median	Minimum	Maximum	Standard deviation	Coefficient of variation	Mean values in municipal wastewater
		mg dm <sup>-3</sup>	mg dm <sup>-3</sup>	mg dm <sup>-3</sup>	mg dm <sup>-3</sup>	mg dm <sup>-3</sup>	%	mg dm <sup>-3</sup>
BOD <sub>5</sub>	147	521.1	460.0	100.0	1300.0	236.0	45.3	197
COD	149	866.3	811.0	251.0	1754.0	295.6	34.1	393
Suspended solids	149	205.5	140.0	45.6	3060.0	272.9	132.8	116
Total nitrogen N <sub>tot</sub>	149	150.1	145.7	28.3	323.5	50.1	33.4	36
Ammonia nitrogen NH <sub>4</sub> -N	149	109.9	101.9	18.4	280.1	40.3	36.7	25
Phosphorus PO <sub>4</sub> -P	149	16.5	15.9	2.5	30.7	5.3	32.1	6

Due to this fact, the technological set up of a single-family WWTP (below 50 PE) needs to be characterized by a very high pollutant removal efficiency as well as a very high resistance to these fluctuations. Such requirements are practically impossible to meet using container WWTPs with activated sludge or trickling filters. By contrast, hybrid systems equipped with beds built as treatment wetlands can easily adapt to such fluctuations and ensure stable removal of pollutants from wastewater.

As far as BOD<sub>5</sub> and COD are concerned, the analyzed installation worked without technological failures over the whole 10-year study period. For suspended solids, the probability of occurrence of failure events (effluent quality parameters higher than permitted)

1 was 2 days per year and for phosphorus 7 days per year. The technological reliability of total  
2 nitrogen removal was much lower (76.8%), with as many as 85 failure days during the whole  
3 year. The hybrid treatment plant had operated continuously for more than 10-years and had  
4 been maintained to ensure constant operational availability. The yearly removal efficiency of  
5 pollutants was sensitive only to a slight periodic variability of both hydraulic and pollution  
6 loads caused by tourists staying at the farm during vacation periods. The plant had never been  
7 observed to freeze in winter thanks to the snow cover, and the only decrease in average  
8 efficiency in the cold season concerned the removal of  $N_{tot.}$ (18%) (Jucherski & Walczowski  
9 2012). These malfunctions occurred in winter when the weather conditions were not  
10 conducive to efficient denitrification of  $NO_3-N$ , which was the dominant form of nitrogen in  
11 the effluent (Fig. 4). By contrast, the installation showed a very high rate of conversion of  
12 ammonium nitrogen. The average concentration of  $NH_4-N$  did not exceed  $2.1 \text{ mg} \cdot \text{dm}^{-3}$  over  
13 the entire research period. In order to increase the efficiency of tertiary wastewater treatment  
14 in winter seasons and thereby improve the overall pollutant removal efficiency of the WWTP,  
15 further efforts have to be made at re-designing and re-building the existing filter bed.  
16

17  
18 To summarize, the installation tested can be particularly recommended for use in  
19 mountainous regions, where streams and rivers as well as underground waters are very  
20 sensitive to pollution and, therefore, require higher levels of protection. The high reliability of  
21 this type of wastewater treatment plants is a consequence of the application of a hybrid  
22 configuration of facilities which is characterized by an increased technological inertia in the  
23 multi-staged wastewater treatment process (Jucherski 2007). The number and configuration of  
24 the facilities constituting the wastewater treatment installation have been chosen so as to  
25 ensure the stability of the process under changeable weather conditions and variable pollutant  
26 loads in raw wastewater. The advantages of the investigated installation include simple  
27 operation, low power consumption and low operating costs. One disadvantage is that,  
28 compared to a container WWTP, the system occupies a slightly larger surface area, which,  
29 however, does not limit its application, especially in rural (Nastawny & Jucherski 2013) or  
30 protected areas (Jóźwiakowski et al. 2014, Jóźwiakowski et al. 2016). The design  
31 and structure of the test facility make it especially suitable for use in sloping terrain with large  
32 inclines typical of mountainous regions.  
33  
34  
35  
36  
37  
38  
39  
40  
41  
42  
43  
44  
45  
46  
47  
48  
49  
50  
51

## CONCLUSIONS

This study showed that the technological solutions applied in the investigated installation for the treatment of wastewater produced by an eco-tourist mountain farm, proved to be very



1  
2  
3  
4  
5  
6  
7  
8  
9  
10  
11  
12  
13  
14  
15  
16  
17  
18  
19  
20  
21  
22  
23  
24  
25  
26  
27  
28  
29  
30  
31  
32  
33  
34  
35  
36  
37  
38  
39  
40  
41  
42  
43  
44  
45  
46  
47  
48  
49  
50  
51

effective and reliable during the whole 10-year period of operation. The long-term median concentration values of effluent pollutants ( $BOD_5 - 2.5 \text{ mg O}_2 \cdot \text{dm}^{-3}$ ,  $COD - 25.0 \text{ mg O}_2 \cdot \text{dm}^{-3}$ ,  $N_{\text{tot}} - 19.5 \text{ mg} \cdot \text{dm}^{-3}$ ,  $PO_4\text{-P} - 1.5 \text{ mg} \cdot \text{dm}^{-3}$  and suspended solids  $- 14.0 \text{ mg} \cdot \text{dm}^{-3}$ ) were lower than permitted by the Polish Regulation (2014). At the same time, the specific loads of pollutants in the effluent were much lower than those specified in the HELCOM Recommendation.

The technological reliability of the tested installation (100% for both  $BOD_5$  and COD removal, over 90% for the removal of  $PO_4\text{-P}$  and total suspended solids, and 77% for total-nitrogen removal) calculated with the Weibull method, confirmed that the treatment plant could be used as an effective tool for protecting the quality of local water resources (especially in ecologically valuable mountainous areas) regardless of changeable weather conditions and variable loads of pollutants characteristic of individual wastewater management in rural regions.

The statistical methods based on the Weibull as well as the lognormal data distributions describe very well the degree of stability and technological reliability of treatment processes, and the differences between them in estimating reliability are negligible.

The Weibull method is especially well-suited for comparing the specific functional features of various types of rural domestic wastewater treatment plants, but the log-normal distribution can also be used.

## REFERENCES

- Bugajski, P., Wałęga, A. & Kaczor G. 2012 Application of the Weibull reliability analysis of household sewage treatment plant. *Gaz, Woda i Technika Sanitarna* **2**, 56–58 (in Polish).
- Djeddou, M. & Achour B. 2015. Wastewater treatment plant reliability prediction using artificial neural networks. In: *12th IWA Specialised Conference on Design, Operation and Economics of Large Wastewater Treatment Plants, September 6-9, 2015, Prague, Czech Republic*.
- Eisenberg, D., Soller, J., Sakaji, R. & Olivieri A. 2001 A methodology to evaluate water and wastewater treatment plant reliability. *Water Sci. Technol.* **43** (10), 91–99.
- Gajewska, M., Józwiakowski, K., Ghrabi, A. & Masi F. 2015 Impact of influent wastewater quality on nitrogen removal rates in multistage treatment wetlands. *Environ. Sci. Pollut. Res.* **22**, 12840-1284.

- 1  
2  
3  
4  
5  
6  
7  
8  
9  
10  
11  
12  
13  
14  
15  
16  
17  
18  
19  
20  
21  
22  
23  
24  
25  
26  
27  
28  
29  
30  
31  
32  
33  
34  
35  
36  
37  
38  
39  
40  
41  
42  
43  
44  
45  
46  
47  
48  
49  
50  
51
- Gizińska-Górna, M., Czekala, W., Józwiakowski, K., Lewicki, A., Dach, J., Marzec, M., Pytka, A., Janczak, D., Kowalczyk-Juško, A., Listosz, A. 2016. The possibility of using plants from hybrid constructed wetland wastewater treatment plants for energy purposes. *Ecol. Eng.* **95**, 534-541.
- HELCOM Recommendation 28E/6. Adopted 15 November 2007 having regard to article 20, Paragraph 1 b) of the Helsinki Convention. *On-site wastewater treatment of single family homes, small businesses and settlements up to 300 Person Equivalent (P.E.)*.
- Jucherski, A. 2007 The quality of farm house-hold wastewater treatment in quasi-technical farmstead installation of IBMER model, in winter period on the mountainous terrain. *Probl. Inż. Rol.* **2 (56)**, 51–60 (in Polish).
- Jucherski, A. & Walczowski A. 2012 Quasi-technical sewage treatment plants in protection of the water resources on rural mountain terrains. *Probl. Inż. Rol.* **3 (77)**, 151–158 (in Polish).
- Józwiakowski, K., Marzec, M., Gizińska-Górna, M., Pytka, A., Skwarzyńska, A., Gajewska, M., Słowik, T., Kowalczyk-Juško, A., Steszuk, A., Grabowski, T. & Szawara, Z. 2014 The concept of construction of hybrid constructed wetland for wastewater treatment in Roztoczański National Park. *Barometr Regionalny* **12 (4)**, 91-102.
- Józwiakowski, K., Mucha, Z., Generowicz, A., Baran, S., Bielińska, J. & Wójcik, W. 2015 The use of multi-criteria analysis for selection of technology for a household WWTP compatible with sustainable development, *Arch. Environ. Prot.* **3**, 76-82.
- Józwiakowski, K., Gajewska, M., Marzec, M., Gizińska-Górna, M., Pytka, A., Kowalczyk-Juško, A., Sosnowska, B., Baran, S., Malik, A., Kufel, R. 2016. *Hybrid constructed wetlands for the National Parks - a case study, requirements, dimensioning, preliminary results*. In: Natural and Constructed Wetlands. Nutrients, heavy metals and energy cycling, and flow. Springer International Publishing Switzerland, Vymazal, J. (Eds.), 247-265.
- Masi, F., Martinuzzi, N., Bresciani, R., Giovannelli, L. & Conte, G. 2007. Tolerance to hydraulic and organic load fluctuations in constructed wetlands. *Water Sci. Technol.* **56 (3)**, 39-48.
- Masi, F., Caffaz, S. & Ghrabi, A. 2013 Multi-stage constructed wetlands systems for municipal wastewater treatment, *Water Sci. Technol.* **67**, 1590–1598.
- Massoud, M. A., Tarhini, A. & Nasr, J. A. 2009 Decentralized approaches to wastewater treatment and management: Applicability in developing countries. *J. Environ. Manage.* **90 (1)**, 652–659.

- 1  
2  
3  
4  
5  
6  
7  
8  
9  
10  
11  
12  
13  
14  
15  
16  
17  
18  
19  
20  
21  
22  
23  
24  
25  
26  
27  
28  
29  
30  
31  
32  
33  
34  
35  
36  
37  
38  
39  
40  
41  
42  
43  
44  
45  
46  
47  
48  
49  
50  
51
- Nastawny, M. & Jucherski, A. 2013 Assessing technical reliability of an on-site sewage treatment plant with filtration bed system, by using modified Weibull's method. *Probl. Inż. Rol.* **2 (80)**, 165–175 (in Polish).
- Niku, S., Schroeder, E.D. & Haugh, R.S. 1982 Reliability and stability of trickling filter processes. *J. Water Pollut. Control. Fed.* **54 (2)**, 129–134.
- Oliveira, S. C. & Sterling, M. V. 2008 Reliability analysis of wastewater treatment plants. *Water Res.* **42**, 1182–1194.
- Osaliya, R., Kansime, F. Oryem-Origa, H. & Kateyo, E. 2011 The potential use of storm water and effluent from a constructed wetland for re-vegetating a degraded pyrite trail in Queen Elizabeth National Park, Uganda. *Physics and Chemistry of the Earth, Parts A/B/C* **36 (14-15)**, 842-852.
- Platzer, C. & Mauch, K. 1997 Soil clogging in vertical flow reed beds - mechanisms, parameters, consequences and.....solutions? *Water Sci. Technol.* **35 (5)**, 175–181.
- Regulation of the Minister of Environment on 24.07.2014. On the conditions to be met when sewage into water or soil and on substances particularly harmful to the aquatic environment, Dz. U. nr 239 poz. 1800 (in Polish).
- Sanchez-Ramos, D., Sánchez-Emeterio, G. & Beltrán, M. F. 2015 Changes in water quality of treated sewage effluents by their receiving environments in Tablas de Daimiel National Park, Spain. *Environ. Sci. Pollut. Res.* **23 (7)**, 6082-6090.
- Wałęga, A. 2009 Assessment of the wastewater treatment plants statistical methods. *Forum eksploatacja* **5 (44)**, 30–34 (in Polish).
- Wałęga, A., Miernik, W. & Kozień, T. 2008 The efficiency of a domestic sewage treatment plant type RetroFAST. *Przemysł Chemiczny* **87 (5)**, 210–212 (in Polish).
- Wojciechowska, E., Gajewska, M. & Ostojki, A. 2016. Reliability of nitrogen removal processes in multistage treatment wetlands receiving high-strength wastewater, *Ecol. Eng.* **98**, 365-371.