

## Article

# Non-Linear Analysis of Structures Utilizing Load-Discretization of Stiffness Matrix Method with Coordinate Update

Najmadeen Saeed <sup>1,2</sup>, Ahmed Manguri <sup>1,3,\*</sup>, Marcin Szczepanski <sup>3,4</sup> and Robert Jankowski <sup>3</sup>

<sup>1</sup> Civil Engineering Department, University of Raparin, Ranya 46012, Kurdistan Region, Iraq; najmadeen\_qasre@uor.edu.krd

<sup>2</sup> Civil Engineering Department, Tishk International University, Erbil 44001, Kurdistan Region, Iraq

<sup>3</sup> Faculty of Civil and Environmental Engineering, Gdansk University of Technology, 80-233 Gdansk, Poland; marcin.szczepanski@pg.edu.pl (M.S.); jankowr@pg.edu.pl (R.J.)

<sup>4</sup> EkoTech Center, Gdańsk University of Technology, Narutowicza 11/12, 80-233 Gdańsk, Poland

\* Correspondence: ahmed.manguri@pg.edu.pl

**Abstract:** This paper proposes a stiffness method based structural analysis algorithm for geometrically non-linear structures. In this study, the applied load on the joints has been discretized to a sequence of a few loadings applied. Each loading step produces incremental external nodal displacements, which are added to the corresponding coordinates to get a new geometrical shape of the structure. This process is iteratively repeated until the sum of the loading of all iterations matches the total initial applied loading. The size of the increments affects the technique's accuracy, subsequently affecting the number of iterations. The configuration of non-linear geometrical structures is vital in the work; a slight change of the coordinates makes a considerable variation of nodal displacements. In this paper, three pin-jointed assemblies and a cantilever beam have been examined using the proposed technique; significantly reasonable outcomes emerged, compared to the non-linear approaches, such as Dynamic Relaxation Method (DRM) and Non-linear approach by Kwan. In a numerical sense, the dissimilarity between the results of the conventional Stiffness Matrix (SM) method and the non-linear method is about 228%, while the maximum discrepancy between the proposed approach and the non-linear methods is just above 15%.

**Keywords:** stiffness matrix method; dynamic relaxation; geometrically non-linear structures; truss structures; cantilever



**Citation:** Saeed, N.; Manguri, A.; Szczepanski, M.; Jankowski, R. Non-Linear Analysis of Structures Utilizing Load-Discretization of Stiffness Matrix Method with Coordinate Update. *Appl. Sci.* **2022**, *12*, 2394. <https://doi.org/10.3390/app12052394>

Academic Editor: Francesco Clementi

Received: 6 January 2022

Accepted: 24 February 2022

Published: 25 February 2022

**Publisher's Note:** MDPI stays neutral with regard to jurisdictional claims in published maps and institutional affiliations.



**Copyright:** © 2022 by the authors. Licensee MDPI, Basel, Switzerland. This article is an open access article distributed under the terms and conditions of the Creative Commons Attribution (CC BY) license (<https://creativecommons.org/licenses/by/4.0/>).

## 1. Introduction

In general, there are three primary sources of non-linearity in the structures that are generally identified. Material non-linearity concerns structures made of an elastic-plastic material. The second case, boundary non-linearity, involves structures which deflect linearly until they contact unexpected supports. The last one is geometric non-linearity; in this case, structure's stiffness changes due to large deflections. The last case is the one regarded in this study.

Nowadays, large space structures are very popular; they are made mostly of cable members, which are geometrically a kind of non-linear structure. A deep understanding of their structural performance yields from their structural analysis. Direct linear methods, such as the Force Method (FM) and Stiffness Method (SM), are linear techniques and cannot accurately cover non-linear structures. Theoretical nodal displacements and internal bar forces show significant inconsistency with the practical results [1]

The proposed approach is a straightforward technique, simple enough to be studied in undergraduate courses for civil engineering students. The system is adapted from a direct linear method, namely, the Stiffness Method. The modification concerns the load and updates the structure's geometry after each incremental loading. In the conventional linear method, the entire load is directly applied to the joints all at once, so the joint displacements

are given instantly. However, in the current technique, the load is incrementally applied ( $\delta P$ ) to the joints to obtain incremental displacements ( $\delta d$ ). The problem of direct linear methods arises here; the nodal displacements of geometrically non-linear structures obtained from linear methods are substantially far from practical results. The linear stiffness method involves a single iteration, while the proposed approach involves two or more repeated steps. When the displacements are achieved in each iteration, they subsequently update the corresponding joint coordinates; hence, the structure geometry is updated. When the sum of the discretized loading matches the full load, this will be the last step of loading; then, the nodal displacements are summed up. The novelty of the current work means that the approach of linear stiffness is applied to analyze geometrically non-linear structures with coordinated updating of the structures, which, in fact, is a partial non-linear technique. The advantages of the proposed approach are twofold. The method is straightforward compared to other non-linear approaches; it is an effective routine for geometrically non-linear pin-jointed assemblies and flexural structures. Its accuracy has been evaluated in the light of the previously proved non-linear methods. This approach can be easily included in educational courses for undergraduate students to pave the way for other advanced non-linear methods.

## 2. Review the Literature of the Studies

For some time, researchers have been dealing with analyzing structures utilizing and modifying numerical methods such as the force method and stiffness matrix method. Przemieniecki [2], and Skelton and De Oliveira [3] described the use of the SM in detail to analyze tensile structures (most of the members of tensile structures are in tension). The method was used for various purposes, such as for stability analysis of complex structures [4,5], for dealing with self-stress states and mechanisms of structures [6], and for the design and detailing of hogging moment regions in reinforced concrete flat plates [7]. Furthermore, SM has been used to find the response of prestressed pin-jointed structures due to loading and to change the stiffness of tensegrity structure (tensegrity structures consist of continuous tension members and discontinuous compression members) in two ways; namely, altering bar length and reorientation of internal forces [8,9]. At the same time, Zhang and Ohsaki [10] formulated the stiffness matrix to show that the equilibrium matrix and stiffness matrix are equivalent in analyzing linear structures. Moreover, the effect of the elastic stiffness and internal force of each cable on the total stiffness of the structure is detailed by Azadi, et al. [11], and Xia and Wu [12].

In terms of complex and non-linear structures, Przemieniecki and Denke [13], and Pellegrino [14] used the linear force method to obtain stress and deflection in complex structures by partitioning the structure into several substructures. Meanwhile, the linear force method for the purpose of analyzing statically and kinematically indeterminate structures has been used by Pellegrino and Calladine [15]. Ma, et al. [16] used unbalanced force iteration, based on both equilibrium and stiffness equations, to remove the unbalanced force and make the structure feasible for prestressing. Furthermore, Jenkins, et al. [17], Kwan [18], and Vaezzadeh and Ahmadizadeh [19] developed their non-linear techniques from linear methods to analyze cable structures. Non-linear structures might not be accurately analyzed by direct linear methods [19], and most non-linear methods are not straightforward.

Meanwhile, more than a few methods exist for the static analysis of geometrically non-linear structures, such as Dynamic Relaxation Method (DRM) [18,20–25], SM [26], and Minimizing total potential energy [14,27]. In this study, the Dynamic Relaxation Method [25] and Non-linear approach [18] have been chosen for the purpose of analyzing non-linear structures and comparing the proposed method (simple non-linear technique based on the stiffness matrix method) with them. Moreover, there is a chance to use any other techniques mentioned before in order to calculate displacements of the non-linear geometrical structures. Therefore, a brief introduction of these methods is presented below.

### 2.1. Dynamic Relaxation Method (DRM)

DRM [25] is one of the methods of analyzing non-linear structures, which presents itself as an attractive method for analyzing non-linear geometrical structures since both form-finding and analysis can be performed by only an analytical framework [18]. The DRM was previously applied by Rushton [24] to the non-linear analysis of structures. From 1970 until now, a large number of investigations have been conducted in this field [22]. Zhang, et al. [28] are among those researchers who have verified that the DRM can be used as a powerful and reliable technique for analyzing engineering problems. In addition, Rezaiee and Alamatian [23] stated that the abilities of this technique are wonderful in comparison with other methods and have a high ability in intense non-linear behaviors.

DRM is based on the motion of the structure geometry, which starts from the point of loading to the final stable equilibrium state, which is reached to the minimum energy vis using the principle D'Alembert as:

$$P(h) = [M]d'' + [C]d' + [K]d \tag{1}$$

in which,  $P(h)$  is the time-dependent vector of externally applied load, and the expressions of  $M$ ,  $C$ , and  $K$  are a mass, damping coefficient, and stiffness matrix of the structure, respectively. Furthermore,  $d''$ ,  $d'$ , and  $d$  are the vectors of acceleration, velocity, and joint displacements respectively. The detailed application of the technique for analyzing non-linear truss structures is presented by Rezaiee and Taghavian [22].

### 2.2. Non-Linear Approach by Kwan

The method [18] is based on conventional FM; it is one of the accurate methods to analyze geometrically non-linear structures. The author explicitly derived the non-linear static response to loads as presented in Equation (2), and he applied the technique through a simple two-leg structure, flat net in three-dimensional space, Saddle net, and Hyperbolic paraboloid net. The two-leg structure has also been implemented in this paper (Figure 1). He validated the approach by Geometric Stiffness Matrix, Dynamic Relaxation, and General Minimum Energy.

$$Z = \frac{EA}{L_0^3} \Delta^3 + \frac{2t_0}{L_0} \Delta \tag{2}$$

in which  $Z$  is the external load,  $E$  &  $A$  are bar modulus of elasticity and cross-sectional area,  $L_0$  is the bar's initial length,  $t_0$  is the pretension force in the bar, and  $\Delta$  is the joint displacement.

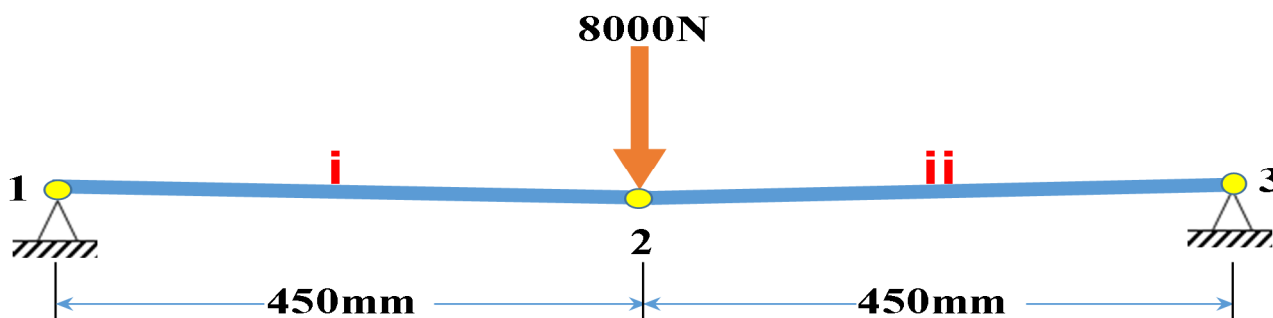


Figure 1. Geometry and loading of Structure 1, the y-coordinate of joint 2 is 10 mm below the other joints.

## 3. Establishing the Proposed Approach

### 3.1. Formulation of the Technique

The proposed algorithm is based on the stiffness matrix method [29]. Strain can be expressed as Equation (3) through the displacement of nodes.

$$\epsilon = B d \tag{3}$$

where  $\epsilon$  is the strain at any point,  $d$  is nodal displacement, and  $B$  is the strain displacement matrix. The statement of virtual work for a body of the volume with boundary surfaces is as follows:

$$\int_V \bar{\epsilon}^T \sigma = \int_V \bar{d}^T b + \int_S \bar{d}^T p + \sum_{n_p} \bar{d}_i^T p_i \tag{4}$$

Here,  $\bar{d}$  is the virtual displacement vector  $[\bar{d}_x \ \bar{d}_y \ \bar{d}_z]^T$ ,  $b$  = body force per unit volume (this often relates to the weight density),  $\bar{d}_i$  = Virtual nodal displacement,  $\sigma$  = Stress at any point,  $p$  = surface load per unit area (example a pressure),  $p_i$  = point loads,  $V$  = body of the volume, and  $S$  = boundary surfaces.

The stress in the above equations can be expressed as follows:

$$\sigma = E\epsilon \tag{5}$$

The stiffness of an element can be written as below.

$$K = \int_V B^T E B dV \tag{6}$$

The detailed derivation can be found in Nikishkov [29], then the assembled stiffness matrix becomes

$$P = Kd \tag{7}$$

where  $P$  is the applied load,  $K$  is the stiffness matrix, and  $d$  is the external nodal displacement vector. Equation (7) is no longer valid for geometrically non-linear structures; hence, the proposed technique suggests that the loads should be incremented in order to obtain partial displacements such that the equation becomes

$$\delta P = K\delta d_i \tag{8}$$

The stiffness matrix depends on the geometry of the structure, so  $K$  is changed in each iteration due to the relocation of the coordinates after updating; therefore, the obtained displacements are added to the old coordinate to generate the new geometry.

$$coord_{new} = coord_{old} + \delta d_i \tag{9}$$

Now a new  $K$  is generated and Equation (8) is applied until  $\sum \delta P = P$ ; then, the cumulative displacement can be found from Equation (10).

$$d_{com} = \sum_{i=1}^n \delta d_i \tag{10}$$

The way of working of the current technique has been illustrated in Figure 2. The flowchart clearly explains the strategy of the work. Firstly, the geometry of the structure is entered by providing the nodal coordinates and bar connectivity. Secondly, the physical properties of the structure and the total loading are provided, and thirdly, the number of iterations is inputted. This information calculates the local and global stiffness matrix; then, load increments are manipulated. After that, the discretized load is applied, and the partial external nodal displacements are obtained. These incremented displacements are added to the former coordinates; hence, a new geometrical structure is achieved. This process is iteratively repeated until the summation of the discretized loadings is equal to the total applied load. Finally, the cumulative nodal displacements are obtained that will be the final results.

### 3.2. Stiffness Matrix Establishment

The stiffness matrix of a pin–pin-element based on the presented approach can be presented as follows.



The geometry of the member before loading that shown in Figure 3a can be found as follows:

$h_o = x_2 - x_1$  and  $v_o = y_2 - y_1$  while  $L_o = \sqrt{h_o^2 + v_o^2}$ , where  $h_o$  and  $v_o$  are the horizontal and vertical distance between the two joints of the element, respectively, while  $L_o$  is the initial length of the member before loading. Moreover, the element stiffness matrix can be expressed as follows.

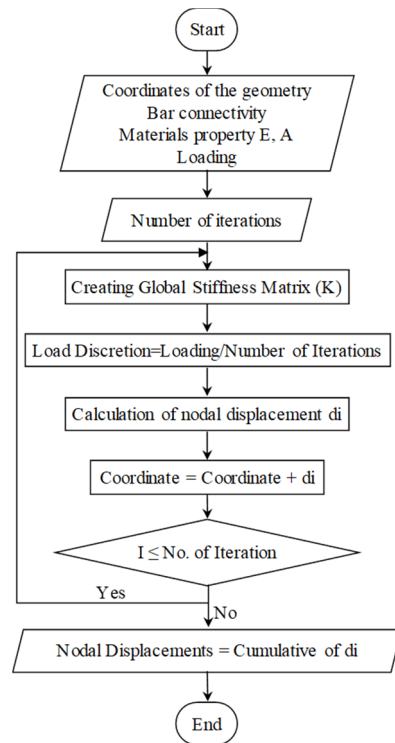


Figure 2. The flow chart of the algorithm of the current technique.

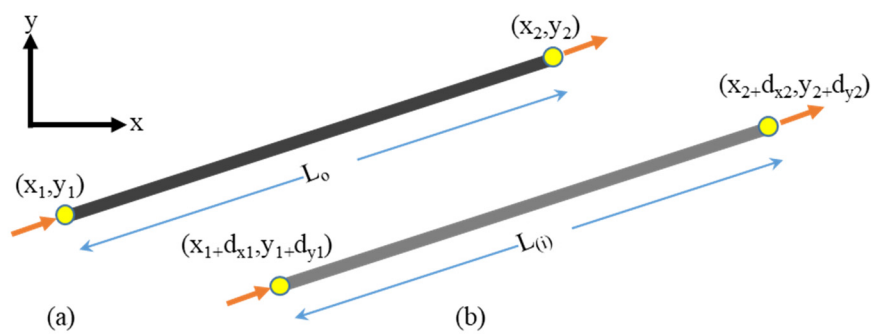


Figure 3. The geometry of a hinged member (a) before and (b) after loading in step (i).

The stiffness matrix for the member before loading can be written as

$$k_o = \frac{EA}{L_o} \begin{bmatrix} c^2 & cs & -c^2 & -cs \\ cs & s^2 & -cs & -s^2 \\ -c^2 & -cs & c^2 & cs \\ -cs & -s^2 & cs & s^2 \end{bmatrix}$$

where,  $c$  and  $s$  are cosine and sine of the oriented angle of the element and they can be found as  $c = \frac{h_o}{L_o}$  and  $s = \frac{v_o}{L_o}$ , respectively.

After applying Equations (3)–(9), the geometry of the element will be changed as presented in Figure 3b and the procedure will be as follows:

$$h_i = (x_2 + d_{x2}) - (x_1 + d_{x1}) \text{ and } v_i = (y_2 + d_{y2}) - (y_1 + d_{y1}) \text{ while } L_i = \sqrt{h_i^2 + v_i^2}$$

$$\text{The stiffness matrix for member 1 can be written as } k_i = \frac{EA}{L_i} \begin{bmatrix} c^2 & cs & -c^2 & -cs \\ cs & s^2 & -cs & -s^2 \\ -c^2 & -cs & c^2 & cs \\ -cs & -s^2 & cs & s^2 \end{bmatrix}$$

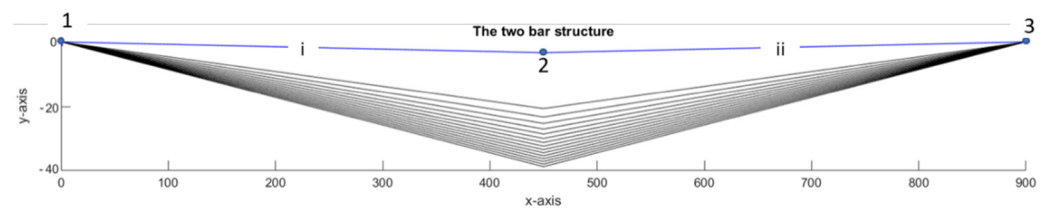
Here,  $c = \frac{h_i}{L_i}$  and  $s = \frac{v_i}{L_i}$ .

#### 4. An Example for Illustrating the Technique

In this section, a simple example, which was a two-leg structure, has been tested using the current approach. The structure was supported at the two far ends; all members had  $EA = 10^8 N$  [30], as shown in Figure 1. The structure has been loaded at the mid joint with 8000 N downward in 15 steps sequentially (i.e., each step the structure was loaded with 8000/15 N), as shown in Table 1. Furthermore, the step-by-step configurations of the structure are presented in Figure 4.

**Table 1.** Step-by-step loading and corresponding displacements of Structure 1 in Figure 1.

Iterations	y-Coordinates of J2 mm	Load N	Vertical Displacement of J2 mm
1	-10	533.33	-2.4318
2	-12.4318	533.33	-1.5741
3	-14.0059	533.33	-1.2406
4	-15.2465	533.33	-1.0472
5	-16.2936	533.33	-0.9171
6	-17.2107	533.33	-0.8222
7	-18.0329	533.33	-0.7491
8	-18.7820	533.33	-0.6906
9	-19.4726	533.33	-0.6427
10	-20.1153	533.33	-0.6024
11	-20.7176	533.33	-0.5679
12	-21.2856	533.33	-0.5381
13	-21.8237	533.33	-0.5120
14	-22.3357	533.33	-0.4889
15	-22.8246	533.33	-0.4682
Total		8000	-13.2929

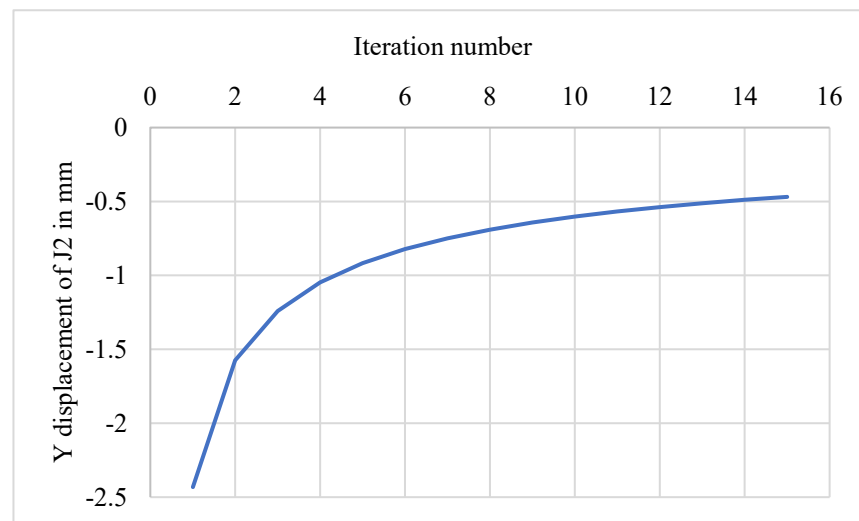


**Figure 4.** The configuration of Structure 1 in 15 steps of loading.

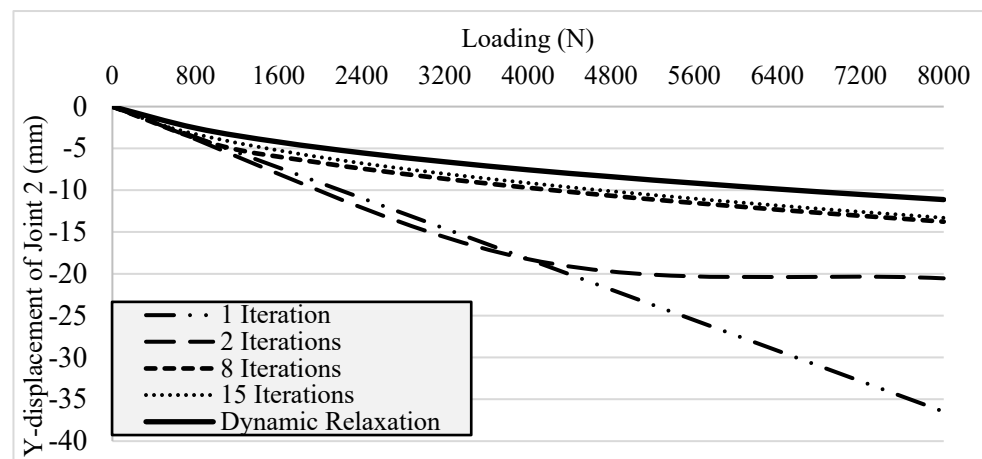
Table 1 shows the series of loading of the structure when it had different geometries. In the first iteration, the structure had the initial coordinates, and it was loaded with the first increment ( $8000/15 = -533.33$ ) N. As a result, only the free joint moved downward with 2.4318 mm, then the displacement was added to the former coordinates. The change occurred only in the y-coordinate of joint 2 with the amount  $(10 + (2.4318))$  mm; the process was continually running until the number of iterations became 15. As it is clear from Figure 5, the amount of displacement in each step declined significantly from the first to the last iteration while the incremented loading was unchanged. This is due to the fact that the structure was stiffened by displacement [18,30].

The results of different iteration numbers have been compared with conventional linear (SM), and geometrically non-linear approaches (DRM), in order to show the effect of the number of iterations on the accuracy of the method. The current approach results get

closer and closer to the results from the referenced methods by increasing iteration numbers, as presented in Figure 6. The figure clearly shows that the accuracy of the technique with respect to DRM is enhanced by increasing the number of iterations. Such that, when the number of iterations was one (i.e., when SM is applied), the end of the straight line was noticeably far from the Dynamic Relaxation curve, whereas, the curves of the results of the proposed approach got nearer to the non-linear curve by increasing the number of iterations. One can see that the most comparable curve from the solid line is the 15-iteration curve. It can be concluded that 15 iterations would be enough to get reasonable results.



**Figure 5.** The Step-by-step enhancement of the stiffness of Structure 1.



**Figure 6.** The effect of the number of iterations when the current approach is applied.

## 5. Results and Discussion

In this section, three pin jointed structures and a cantilever beam have been tested using the current technique, conventional SM, and two quoted geometrically non-linear methods. In the following sub-sections, the results are discussed in detail.

### 5.1. Structure 1

The two-bar structure was tested to see the validity of the proposed technique. From this manner, the proposed approach was applied to the structure, then its displacement results were compared with the results of SM and non-linear methods. Table 2 shows that there was a noticeable inconsistency between the displacements obtained from SM and that from geometrically non-linear methods. For this reason, it can be said that the structure behaves non-linearly.

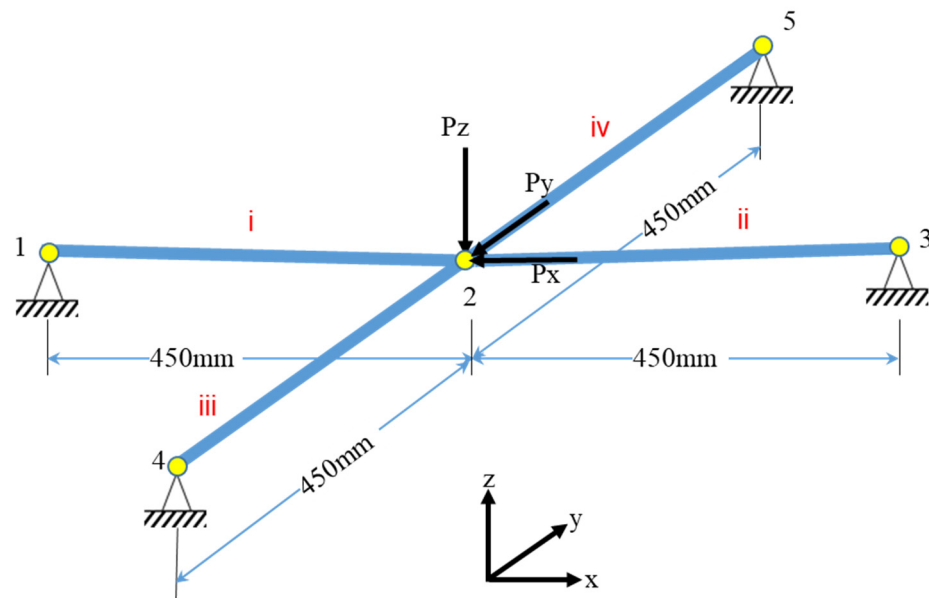
**Table 2.** The displacement of y-coordinate of joint 2 of Structure 1 using the current technique and the quoted methods.

Methods	Joint	SM (mm)	Current Study (mm)	Kwan (1998) (mm)	Lewis et al., (1984) (mm)
Downward displacement (mm)	2	-36.4770	-12.9887	-11.1120	-11.1168

Table 2 displays that the results of SM are significantly far from those of geometrically non-linear methods (Lewis et al., 1984; Kwan 1998), in which their discrepancy is about 228%, whereas the dissimilarity of the current study was only 16% that is reasonably close to the exact methods.

5.2. Structure 2

In this subsection, a 3D structure has been examined; the structure consists of four bars with four restrained joints and a free joint at the middle. The properties were the same as structure 1. However, the 3D structure has been loaded with  $P = 16,000$  N in three directions at Joint 2, as shown in Figure 7. It can be seen from Table 3 that there is a negligible movement of Joint 2 in X- and Y-directions due to the response of the supports. The table also shows the validity of the proposed approach; the value of Z-direction displacement of joint 2 obtained from the current technique has a slight discrepancy with that of non-linear approaches, while the linear approach failed to get an accurate result.



**Figure 7.** Geometry and loading of a three-dimensional Structure, z-coordinate of joint 2 is 10 mm below the other joints.

**Table 3.** The displacement of y-coordinate of joint 2 of Structure 2 using the current technique and the quoted methods.

Displacement of Joint (2)	SM (mm)	Current Study (mm)	Kwan (1998) (mm)	Lewis et al., (1984) (mm)
x	-0.03	-0.03	-0.03	-0.03
Y	-0.03	-0.03	-0.03	-0.03
Z	-36.47	-12.87	-11.11	-11.11

5.3. Structure 3

In this part, a linear pin-jointed assembly was tested, containing six joints and ten bars, as shown in Figure 8. The bars had  $EA = 4 \times 10^5$  N. Joints 3 and 5 were loaded downward with 3000 and 9000 N, respectively, in 100 steps; the reason for applying the



massive loading is to get noticeable displacement. Table 4 gives the displacements of the two end joints (Joints 5 and 6) by the linear SM, the proposed approach and the quoted methods. The results prove that the maximum discrepancy of the referenced non-linear techniques with the proposed approach was only 5%, while the dissimilarity between non-linear techniques and the linear SM is 88%. The results demonstrate that the method is also pragmatic and accurate for linear structures with massive loading.

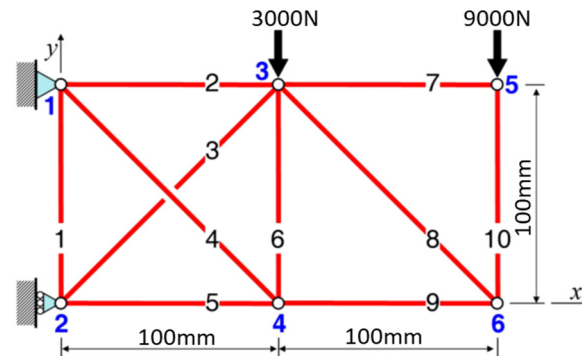


Figure 8. The pin-jointed assembly with ten members (Structure 3) (adapted from [31,32]).

Table 4. Vertical displacements in mm of Joints 5 and 6 of Structure 3, using the proposed approach and the quoted methods.

Joint	Direction	Methods			
		SM (mm)	Curren Study (mm)	Kwan (1998) (mm)	Lewis et al., (1984) (mm)
5	x	3.75	1.989	1.99	1.988
	y	-27.857	-28.144	-27.61	-28.221
6	x	-6	-7.601	-7.54	-7.812
	y	-25.607	-25.487	-24.95	-25.510

Furthermore, Figure 9 clearly shows that by increasing the iteration numbers, the proposed approach results get close to the outcomes of the non-linear (DRM) method. It can be seen that from the figure, in 15 iterations, that the approach gives results reasonably close to DRM ones.

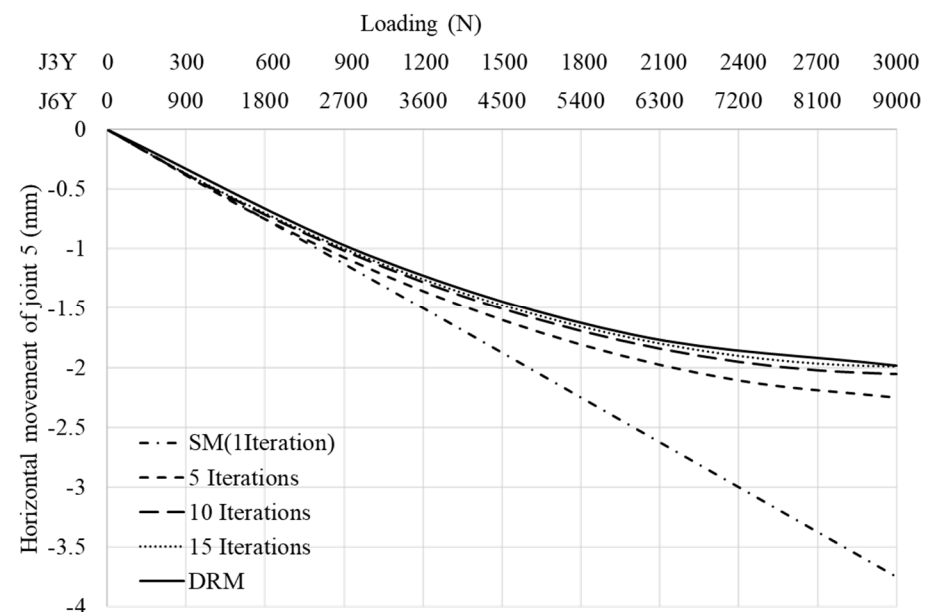


Figure 9. Geometry and loading of a three-dimensional Structure, z-coordinate of joint 2 is 10 mm below the other joints.

In summary, on the basis of the results of Tables 2–4 of the preceding three examined structures, it can be concluded that the results of the proposed approach are in good agreement with the non-linear techniques in literature, while the results of the dependent linear technique are far from those results.

5.4. Structure 4

In this subsection, a simple cantilever beam with  $EI = 166.67 \text{ N.m}^2$ , shown in Figure 10, is examined to validate the accuracy of the current technique for analyzing geometrically non-linear flexural members. The results show that the technique is roughly in agreement with the previous non-linear technique by Lewis et al. (1984), as shown in Table 5. It can be seen that the linear stiffness method has zero horizontal displacements, while the current approach and non-linear is clearly giving some results that are concise with the reality.

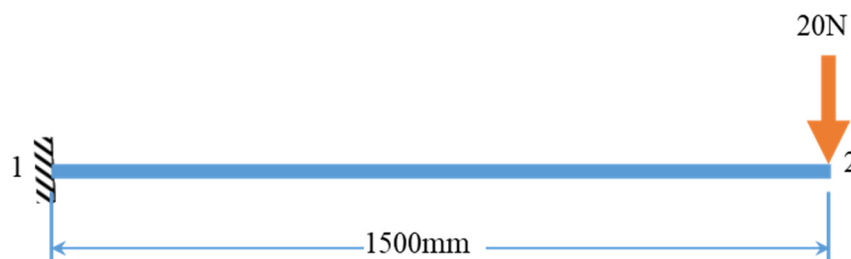


Figure 10. Cantilever beam under vertical loading.

Table 5. Analysis of the cantilever beam using several techniques.

Joint	Direction	Methods		
		SM (mm)	Current Study (mm)	Lewis et al., (1984) (mm)
2	x	0	−6.05	−6.01
	y	−135	−134.64	−134.05

6. Conclusions

In this paper, a straightforward technique which is a partially non-linear approach has been developed from SM to analyze geometrically non-linear structures. A comparison has been made among the current technique, SM, and the two non-linear quoted methods to evaluate the accuracy of the proposed approach. The outcomes are:

- The results of the proposed technique are in good agreement with the non-linear techniques’ ones, with a slight discrepancy, while the dissimilarity between of the nodal displacements of SM and the quoted non-linear methods is 228%;
- It can be concluded that the proposed technique is accurate and applicable for geometrically non-linear structures;
- The accuracy of the technique is enhanced by increasing the number of iterations; however, the number of iterations could be assumed to be 15 to get reasonable results.

**Author Contributions:** Modeling and analysis, N.S.; writing the first draft, A.M.; reviewing, M.S.; supervisor, R.J. All authors have read and agreed to the published version of the manuscript.

**Funding:** This research received no external funding.

**Institutional Review Board Statement:** Not applicable.

**Informed Consent Statement:** Not applicable.

**Data Availability Statement:** Not applicable.

**Conflicts of Interest:** The authors declare no conflict of interest.

## References

1. Saeed, N.M.; Kwan, A.S.K. Shape morphing and adjustment of pantographic morphing aerofoil section structure. *Smart Struct. Syst.* **2019**, *24*, 193–207. [CrossRef]
2. Przemieniecki, J.S. *Theory of Matrix Structural Analysis*; Courier Corporation: North Chelmsford, MA, USA, 1985. Available online: <https://books.google.fr/books?id=Jd6i0k4wvtQC> (accessed on 18 December 2021).
3. Skelton, R.E.; De Oliveira, M.C. *Tensegrity Systems*; Springer: Berlin/Heidelberg, Germany, 2013; Volume 1. Available online: [https://www.researchgate.net/profile/Robert\\_Skelton3/publication/252773301\\_Controllable\\_tensegrity\\_a\\_new\\_class\\_of\\_smart\\_structures/links/56aa247708ae7f592f0f208b.pdf](https://www.researchgate.net/profile/Robert_Skelton3/publication/252773301_Controllable_tensegrity_a_new_class_of_smart_structures/links/56aa247708ae7f592f0f208b.pdf) (accessed on 1 January 2022).
4. Przemieniecki, J.S. Discrete-element methods for stability analysis of complex structures. *Aeronaut. J.* **1968**, *72*, 1077–1086. [CrossRef]
5. Deng, H.; Kwan, A.S.K. Unified classification of stability of pin-jointed bar assemblies. *Int. J. Solids Struct.* **2005**, *42*, 4393–4413. [CrossRef]
6. Calladine, C.R.; Pellegrino, S. First-order infinitesimal mechanisms. *Int. J. Solids Struct.* **1991**, *27*, 505–515. [CrossRef]
7. Skorpen, S.A.; Dekker, N.W. The application and interpretation of linear finite element analysis results in the design and detailing of hogging moment regions in reinforced concrete flat plates. *J. S. Afr. Inst. Civ. Eng.* **2014**, *56*, 77–92.
8. Guest, S.D. The stiffness of prestressed frameworks: A unifying approach. *Int. J. Solids Struct.* **2006**, *43*, 842–854. [CrossRef]
9. Guest, S.D. The stiffness of tensegrity structures. *IMA J. Appl. Math.* **2011**, *76*, 57–66. [CrossRef]
10. Zhang, J.Y.; Ohsaki, M. Adaptive force density method for form-finding problem of tensegrity structures. *Int. J. Solids Struct.* **2006**, *43*, 5658–5673. [CrossRef]
11. Azadi, M.; Behzadipour, S.; Faulkner, G. Antagonistic variable stiffness elements. *Mech. Mach. Theory* **2009**, *44*, 1746–1758. [CrossRef]
12. Xia, J.-W.; Wu, X.-S. Evaluating the stiffness of cable-bar tensile structures based on subspaces of zero elastic stiffness and demand stiffness. *Eng. Struct.* **2020**, *206*, 110167. [CrossRef]
13. Przemieniecki, J.S.; Denke, P.H. Joining of complex substructures by the matrix force method. *J. Aircr.* **1966**, *3*, 236–243. [CrossRef]
14. Pellegrino, S. Structural computations with the singular value decomposition of the equilibrium matrix. *Int. J. Solids Struct.* **1993**, *30*, 3025–3035. [CrossRef]
15. Pellegrino, S.; Calladine, C.R. Matrix analysis of statically and kinematically indeterminate frameworks. *Int. J. Solids Struct.* **1986**, *22*, 409–428. [CrossRef]
16. Ma, Q.; Ohsaki, M.; Chen, Z.; Yan, X. Step-by-step unbalanced force iteration method for cable-strut structure with irregular shape. *Eng. Struct.* **2018**, *177*, 331–344. [CrossRef]
17. Jenkins, J.A.; Seitz, T.B.; Przemieniecki, J.S. Large deflections of diamond-shaped frames. *Int. J. Solids Struct.* **1966**, *2*, 591–603. [CrossRef]
18. Kwan, A.S.K. A new approach to geometric nonlinearity of cable structures. *Comput. Struct.* **1998**, *67*, 243–252. [CrossRef]
19. Vaezzadeh, A.; Ahmadizadeh, M. Three-dimensional nonlinear dynamic analysis of slack cable structures. In Proceedings of the 13th International Conference on Steel, Space and Composite Structures, Perth, Australia, 31 January–2 February 2018; pp. 1–10.
20. Barnes, M.R. Form-finding and analysis of prestressed nets and membranes. *Comput. Struct.* **1988**, *30*, 685–695. [CrossRef]
21. Lewis, J.W. A comparative study of numerical methods for the solution of pretensioned cable networks. In Proceedings of the International Conference on the Design and Construction of Non-Conventional Structures, Edinburgh, UK, 8–10 December 1987; pp. 27–33.
22. Rezaiee, P.M.; Taghavian, H.M. Nonlinear analysis of truss structures using dynamic relaxation. *Int. J. Eng.* **2006**, *19*, 11–22.
23. Rezaiee, P.M.; Alamatian, J. The dynamic relaxation method using new formulation for fictitious mass and damping. *Struct. Eng. Mech.* **2010**, *11*, 109. [CrossRef]
24. Rushton, K.R. Large deflexion of variable-thickness plates. *Int. J. Mech. Sci.* **1968**, *10*, 723–735. [CrossRef]
25. Lewis, W.J.; Jones, M.S.; Rushton, K.R. Dynamic relaxation analysis of the non-linear static response of pretensioned cable roofs. *Comput. Struct.* **1984**, *18*, 989–997. [CrossRef]
26. Krishna, P. *Cable-Suspended Roofs*; McGraw-Hill Companies: New York, NY, USA, 1978.
27. Stefanou, G.D.; Moossavi, E.; Bishop, S.; Koliopoulos, P. Conjugate gradients method for calculating the response of large cable nets to static loads. *Comput. Struct.* **1993**, *49*, 843–848. [CrossRef]
28. Zhang, L.C.; Kadhodayan, M.; Mai, Y.-W. Development of the maDR method. *Comput. Struct.* **1994**, *52*, 1–8. [CrossRef]
29. Nikishkov, G.P. *Introduction to the Finite Element Method*; University of Aizu: Aizuwakamatsu, Japan, 2004. Available online: <https://www.iitg.ac.in/mech/documents/128/introfem.pdf> (accessed on 18 December 2021).
30. Manguri, A.A.; Saeed, N.M. An Approximate Linear Analysis of Structures Using Incremental Loading of Force Method. *UKH J. Sci. Eng. Struct.* **2020**, *4*, 37–44. [CrossRef]
31. Saeed, N.M. *Prestress and Deformation Control in Flexible Structures*. Ph.D. Thesis, Cardiff University, Cardiff, UK, December 2014.
32. Saeed, N.M.; Kwan, A.S.K. Simultaneous displacement and internal force prescription in shape control of pin-jointed assemblies. *AIAA J.* **2016**, *54*, 2499–2506. [CrossRef]