



OPEN

Controlling crystallites orientation and facet exposure for enhanced electrochemical properties of polycrystalline MoO₃ films

Konrad Trzcinski^{1,2✉}, Zuzanna Zarach¹, Mariusz Szkoda^{1,2}, Andrzej P. Nowak¹, Katarzyna Berent⁴ & Mirosław Sawczak³

This study focuses on the development and optimization of MoO₃ films on commercially available FTO substrates using the pulsed laser deposition (PLD) technique. By carefully selecting deposition conditions and implementing post-treatment procedures, precise control over crystallite orientation relative to the substrate is achieved. Deposition at 450 °C in O₂ atmosphere results in random crystallite arrangement, while introducing argon instead of oxygen to the PLD chamber during the initial stage of sputtering exposes the (102) and (011) facets. On the other hand, room temperature deposition leads to the formation of amorphous film, but after appropriate post-annealing treatment, the (00k) facets were exposed. The deposited films are studied using SEM and XRD techniques. Moreover, electrochemical properties of FTO/MoO₃ electrodes immersed in 1 M AlCl₃ aqueous solution are evaluated using cyclic voltammetry and electrochemical impedance spectroscopy. The results demonstrate that different electrochemical processes are promoted based on the orientation of crystallites. When the (102) and (011) facets are exposed, the Al³⁺ ions intercalation induced by polarization is facilitated, while the (00k) planes exposure leads to the diminished hydrogen evolution reaction overpotential.

The orientation of crystallites relative to the substrate, as well as the exposed crystal facets, affect the properties of deposited films. The phenomenon is universal and has been reported for various materials, including BiVO₄¹, WO₃², TiO₂³, ZnO⁴, Bi₂O₃⁵, and others. The ability to control the exposure of specific crystal facets can be beneficial for applications in photoelectrochemistry³, energy storage and conversion⁶, photocatalysis⁷, and sensing⁸. In general, the approach of controlling the crystals' orientation may be advantageous wherever the crystalline material exhibits anisotropic properties or possess active centers on specific facets. In the case of film deposition, the most common way to affect the crystal orientation of sputtered materials is by selecting an appropriate substrate that promotes growth in the desired direction due to lattice matching. This method enables the production of high-quality films, however, such procedures limit the possible applications of the deposited layers due to the properties of those single-crystalline substrates, such as non-conductivity, opaqueness, high price, or instability in operating conditions. Thus, it would be advantageous to develop methods for affecting the crystal orientation on randomly oriented substrates, such as FTO (fluorine-doped tin oxide). An exemplary SEM image and XRD pattern of an FTO substrate that confirms the random arrangement of crystallites is shown in Fig. 1a,b. The crystal orientations of the FTO were investigated by electron backscatter diffraction (EBSD). Figure 1c,d presents the inverse pole figure (IPF) and pole figures for (200) and (110) planes. The FTO substrate shows broad spots for (200) and ring-shaped patterns for (110) planes, respectively, which is consistent with the results obtained from XRD. FTO glass possesses desirable characteristics such as transparency, conductivity, thermal and chemical stability over a wide range of pH⁹, making it suitable for a wide range of applications. Previous reports have demonstrated that BiVO₄, when deposited on single crystal YSZ (yttria-stabilized zirconia) substrate due to lattice matching, exhibits (004) facet exposition, which is highly convenient for photoelectrochemical water

¹Faculty of Chemistry, Gdańsk University of Technology, Narutowicza 11/12, 80-233 Gdańsk, Poland. ²Advanced Materials Center, Gdańsk University of Technology, Narutowicza 11/12, 80-233 Gdańsk, Poland. ³Centre for Plasma and Laser Engineering, The Szewalski Institute of Fluid Flow Machinery, Fiszerza 14, 80-231 Gdańsk, Poland. ⁴Academic Centre for Materials and Nanotechnology, AGH University of Krakow, Mickiewicza 30 Ave, 30-059 Kraków, Poland. ✉email: kontrzci@pg.edu.pl

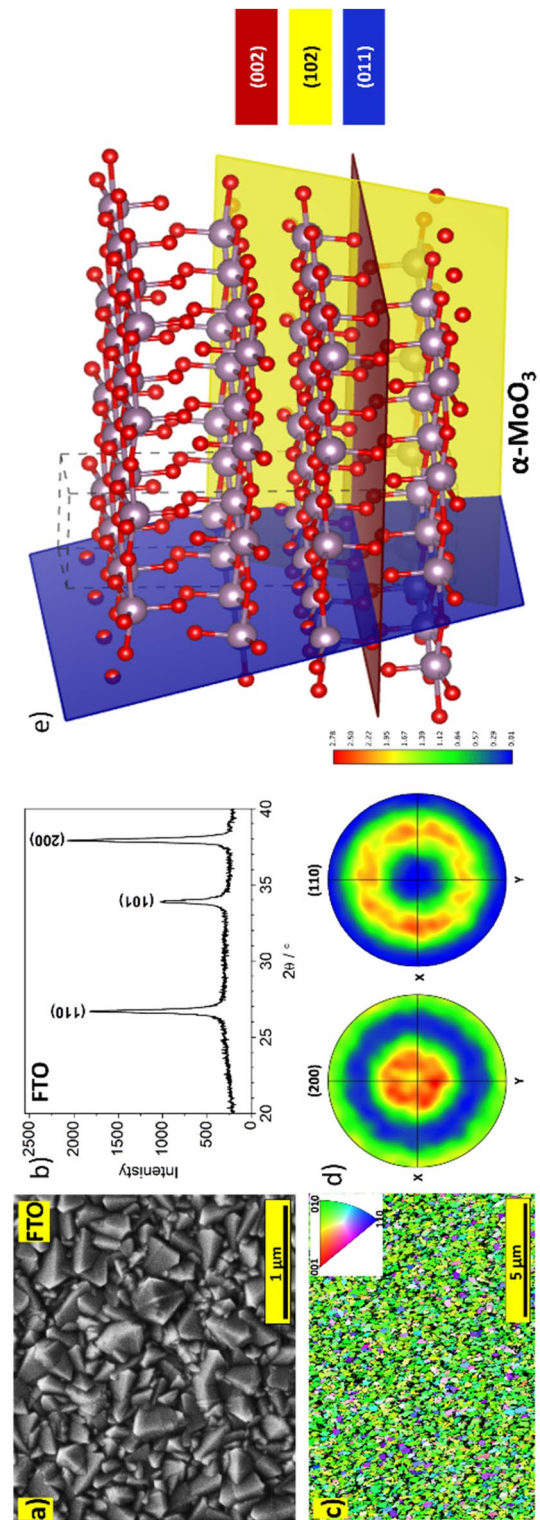


Figure 1. (a) SEM micrograph and (b) XRD pattern of the FTO substrate; (c) Inverse pole figure and (d) pole figures for (200) and (110) planes of the FTO substrate; (e) α -MoO₃ crystal structure with (002), (102), and (011) planes highlighted.

splitting¹⁰. However, a similar effect has also been achieved using high-temperature pulsed laser deposition, even on an FTO polycrystalline substrate¹¹.

The primary objective of this paper is to investigate and customize the properties of MoO₃ films deposited on commercially available FTO substrates. Through the exploration of various deposition techniques and post-treatment methods, the aim is to optimize and tailor the characteristics of the MoO₃ films for specific applications. α -MoO₃ is a metal oxide characterized by a layered structure and is distinguished by the presence of van der Waals (vdW) gaps¹². These vdW gaps contribute to the unique physical and chemical properties exhibited by α -MoO₃. Understanding the relationship between crystal structure and anisotropy is crucial for optimizing the functionality and performance of α -MoO₃ in various fields, including energy storage, sensing, and catalysis. Figure 1e depicts the representation of the crystal unit with highlighted facets, illustrating that the van der Waals gaps are parallel to the (00k) planes. This crystal structure suggests that the material can exhibit anisotropy in properties such as ion conductivity, and demonstrate varying activity on specific crystal facets. And indeed, previous studies have proven that α -MoO₃ exhibits anisotropy, particularly in catalytic properties¹³. Moreover, this material is also commonly investigated as an electrode material for batteries and electrochemical capacitors^{14,15}, but also for photocatalysts¹⁶, electrochromic films¹⁷, and gas sensing materials¹⁸. Hence, it is reasonable to develop methods of MoO₃ deposition that enable the control of crystals orientation and exposure of specific crystal facets on the same type of polycrystalline substrate. Until recently, various methods of MoO₃ deposition have been proposed, including PLD¹⁹, spray pyrolysis²⁰, RF sputtering²¹, and electrodeposition²². The orientation of the deposited crystals is found to depend on the choice of substrates and deposition parameters, as indicated by the literature. Pulsed laser deposition of MoO₃ on Si (111) wafers results in the formation of α -MoO₃ with exposed (00k) planes. On alumina polycrystalline substrates, the same deposition technique leads to the formation of suboxides, but subsequent post-annealing significantly enhances the intensities of (102) and (011) reflections²³. On the other hand, spray-pyrolysis of molybdenum trioxide on glass substrates, conducted at an appropriate temperature using MoCl₅ and (NH₄)₆Mo₇O₂₄·4H₂O solutions as precursors, allows the exposure of (00k) planes^{20,24}, whereas RF sputtering of MoO₃ on glass and silicon substrates results in amorphous film, but a post-annealed film consists of both, α - and β -MoO₃ phases²¹. In this study, we demonstrate the deposition of MoO₃ polycrystalline films with desired orientation on FTO substrates using the PLD system.

Experimental part

The FTO substrates (7 Ω /sq) were purchased from Merck. The cleaning procedure involved ultrasonic treatment of the substrates in acetone, ethanol, and isopropanol (all from POCH) for approximately 20 min each. Subsequently, the substrates were dried using a stream of air. Prior to deposition, the FTO pieces underwent treatment with oxygen plasma using plasma cleaner (Femto, Diener). The deposition process was conducted in a developed PLD chamber, where the laser beam was directed perpendicularly onto the metallic molybdenum target, while the substrates were positioned parallel to the beam at a distance of 10 mm from the target. A 266nm, 6ns pulse-duration Nd:YAG laser (Brilliant B, Quantel) with an FHG module was employed for the ablation process. The laser's energy density was set at approximately 2.5 J cm². Further technical details about the deposition system can be found in our previous paper²⁵. Samples deposited at room temperature were subsequently annealed in oven (FCF 1SP, Czylok) under an air atmosphere. The metallic Mo thin film was deposited using magnetron sputtering system (Q150T, Quorum). The morphology of the deposited films was examined using scanning electron microscope (SU3500, Hitachi) at a 10 kV accelerating voltage. Energy dispersive x-ray spectroscopy (EDX) measurements were performed using an EDAX Genesis APEX 2i with an ApolloX SDD spectrometer. XRD patterns were collected using a Rigaku Intelligent X-ray diffraction system Smartlab with Cu K α radiation. The patterns were recorded in a range of 10–40°. EBSD analysis was performed using scanning electron microscope (Versa 3D, FEI), operating at an accelerating voltage of 15 kV, equipped with CMOS detector (Symmetry S2, Oxford Instruments). The collected EBSD data was post-processed using the AZtecCrystal software. All electrochemical experiments were performed using a potentiostat (Vertex, Ivium) in a three-electrode cell, where FTO/MoO₃, Ag/AgCl (3 M KCl), and platinum mesh served as working electrode, reference electrode, and counter electrode, respectively. The measurements were performed in 1 M AlCl₃ (AlCl₃·6H₂O, 99%, Alfa Aesar) aqueous solution. The pH of the prepared electrolyte was 2.2. The geometric surface area of the electrode in contact with the electrolyte was approximately ~0.2 cm².

Results and discussion

Deposition of MoO₃ with (011) and (102) planes exposed

First, the MoO₃ material was deposited at 450 °C in O₂ atmosphere (0.5 mbar) for 120 min. The resulting MoO₃ film uniformly covered the entire surface of the FTO substrate. The SEM micrograph of the deposited film is presented in Fig. 2a. The polycrystalline film consisted of thin plates with sizes up to 500 nm. The crystallites appeared to be predominantly oriented perpendicular to the substrate, although a mixture of different orientations was observed. The XRD pattern showed that the most intense reflexes originated from the (102) and (011) planes, while the (002), (004), and (006) planes were also clearly visible (see Fig. 2b, PLD_450 °C(O₂)). Additionally, deposition was performed at different temperatures, and deposition at 400 °C also resulted in a random orientation of crystallites, while deposition at 500 °C did not lead to the formation of a distinct layer (see Fig. S1a and b, respectively). In order to achieve a more ordered arrangement of α -MoO₃ crystallites, slight modifications were made to the deposition parameters. The deposition process commenced at room temperature in an argon atmosphere. After 10 min, oxygen was introduced into the chamber, and the temperature was raised to 450 °C (sample labeled as PLD_450 °C(Ar,O₂)). The SEM image of resulting layer is presented in Fig. 2c. The morphology of the layer was relatively similar, consisting of crystallites with a similar appearance. However, upon closer examination, it was observed that the majority of crystallites were perpendicular to the FTO substrate.

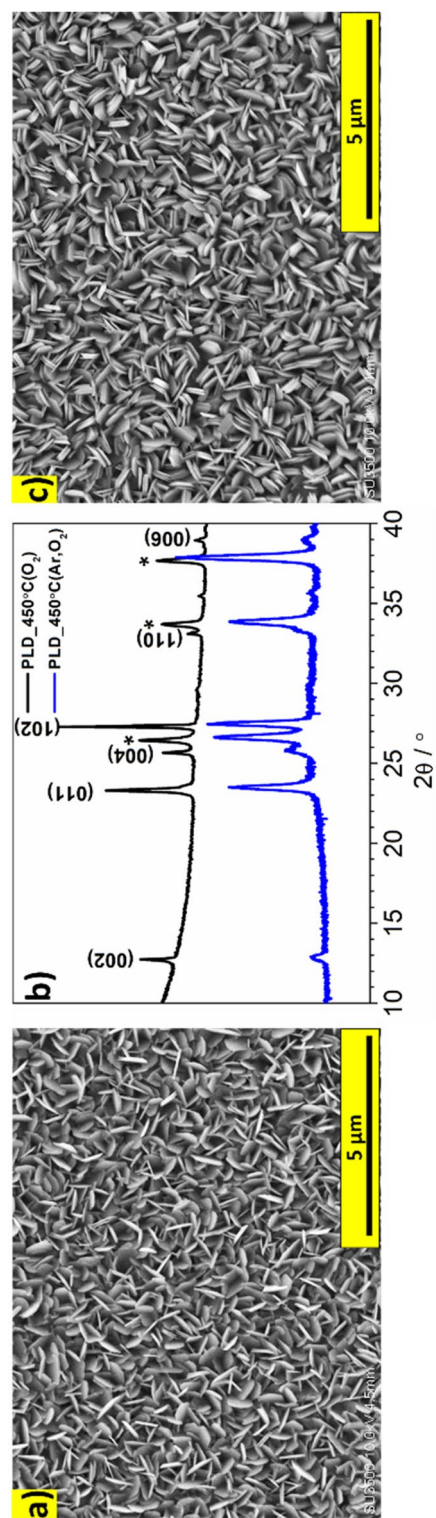


Figure 2. (a) SEM micrograph of the PLD_450 °C(O₂) film; (b) XRD patterns of the PLD_450 °C(O₂) and PLD_450 °C(Ar,O₂) materials (reflections labeled with “*” origin from FTO); (c) SEM micrograph of the PLD_450 °C(Ar,O₂) film.

Moreover, the intensities of the reflections from the (00k) planes were significantly diminished, and the peaks appear broader in comparison with the conventionally deposited film pattern (Fig. 2b). Based on this results, it can be concluded that the exposed facets observed in the SEM image were (011) and (102), while the (00k) planes were oriented perpendicular to the substrate. Considering this findings, it can be inferred that vdW gaps are also perpendicular to FTO and the direction of crystallites growth is related to the initial stage of the process when metallic Mo is deposited in argon atmosphere. To validate this hypothesis, a 20 nm layer of metallic Mo was deposited on FTO using a magnetron sputtering machine, and then the FTO/Mo was used as a substrate for MoO₃ deposition using PLD (O₂ atmosphere, 120 min, 450 °C). The resulting layer exhibited a similar morphology and exposed (102) and (011) facets (SEM micrograph is shown in Fig. S1c). Thus, the presence of a thin Mo film during the initial stage of MoO₃ deposition is crucial for obtaining a film with exposed (011) and (102) facets.

In order to enhance the readability of the manuscript, the sample deposited at a temperature of 450 °C in a two-step process (in Ar and O₂) is labeled as MoO₃_(011)&(102).

Deposition of MoO₃ with (00k) planes exposed

The same PLD system, substrates, and target were used to obtain a MoO₃ film with differently oriented crystallites and exposed (00k) planes. The deposition process was performed at room temperature for the same duration (120 min) and under the same oxygen pressure (0.5 mbar). The SEM image of the as-deposited film is presented in Fig. 3a, where no distinguishable crystallites can be observed, indicating an amorphous nature of as-deposited film. To crystallize the layer, the sample was annealed in an air atmosphere. However, conventional annealing at 450 °C for 4 h with a slow heating rate resulted in the formation of relatively large crystallites that poorly covered the substrate and exhibited completely random arrangement, see Fig. S2a. Nevertheless, through optimization of the crystallization procedure, it was possible to obtain a film with exposed (00k) facets. The amorphous films were directly placed in a heated oven and annealed at 575 °C for varying periods of time (0–20 min). The selected temperature was limited by thermal stability of the FTO substrates (lower temperatures did not yield the expected effect). The SEM images of the post-annealed films are presented in Fig. 3b–f. The morphology of the films underwent significant changes with increasing annealing time. After 0.5, 1, and 3 min of heating, areas can be found where the grains merge together. EBSD measurements were performed for samples annealed at different times. Figure 3g–k shows the IPF maps, corresponding pole figures, and color code representing crystal orientation of MoO₃ films annealed at 1 min and 3 min. The analyses of the pole figures obtained from EBSD data confirm a preferential orientation of the grains with the [001] direction. It is clearly visible that in the first stage of annealing, the crystallites start to grow parallel to the (00k) planes. The black areas in the IPF maps are unindexed areas resulting from the presence of amorphous regions, the content of which is reduced during prolonged annealing. The appearance of the crystallites growing in other directions is observed after 3 min of annealing, however, most of the crystallites choose a preferential direction growth in such a way that (00k) planes are exposed. Prolonging the annealing time resulted in fully polycrystalline layers, with larger crystallites formed as the heating duration increased. Notably, after 20 min, the crystal size expanded to several micrometers, causing partial exposure of the FTO substrate surface, as it is shown in Fig. S2b. In the studied case, where the aim is to obtain a film of deposited material, the observed effect of patchy layer formation is unfavorable. Extending the annealing time to 60 min at a temperature of 575 °C revealed an intriguing phenomenon concerning the behavior of MoO₃. It appeared that the material underwent sublimation from the FTO substrate, as evidenced by the absence of MoO₃ on part of the FTO surface (Fig. S3a). This sublimation phenomenon was unexpected since it is generally claimed that the sublimation temperature of MoO₃ is higher than 780 °C²⁶. However, it has been reported that in the case of the MoO₃ nanoplates, the sublimation occurred even at prolonged heating at temperatures higher than 400 °C²⁷. This sublimation phenomenon highlights the sensitivity of MoO₃ in a form of thin films to elevated temperatures and emphasizes the importance of carefully controlling the annealing conditions to achieve the desired layer deposition and maintain film integrity. Furthermore, in the case presented here, the material deposited at room temperature appears to be amorphous. The energetically unfavorable nature of amorphous materials, compared to ordered crystals, may reduce the energy requirements of thermally activated processes, such as sublimation. Based on these findings, a post-annealing duration of 5 min was determined to be optimal for the sample, labeled as MoO₃_(00k). A digital photo of the sample is shown in Fig. S3b for comparison with the sample annealed for 60 min. The morphology of the films presented in Fig. 3 differs significantly from the morphology of MoO₃ deposited at 450 °C. In contrast to the crystallites deposited at high temperatures, the crystallites in post-annealed samples after room temperature deposition appeared to be oriented parallel to the FTO substrate. The XRD patterns of the films after annealing at 575 °C are shown in Fig. 3g. As expected, the as-deposited layer was amorphous, with only reflexes originating from the FTO substrate. After 30 s of heating, low-intensity reflections characteristic of α-MoO₃ appeared and as the heating time increased, the intensity of these signals grew, indicating a more crystalline material. The XRD results are in agreement with the EBSD analysis. Moreover, after 5 min of annealing, the intensity of the MoO₃ peaks exceeded that of the peaks originating from the FTO substrate. Notably, the intensities of the peaks did not increase uniformly as the reflexes originating from the (002), (004), and (006) planes exhibited much higher intensity compared to the (011) plane, while the peak from (102) plane nearly disappeared. On the basis of XRD results, it can be inferred that the majority of the crystallites is arranged in such a way that the (00k) planes are exposed. Considering the crystal structure of α-MoO₃ (see Fig. 1a), the vdW gaps for this type of samples were parallel to the substrate. The post-annealing of amorphous MoO₃ was also performed at lower temperatures (400 and 450 °C) using the same method of directly placing the samples in the hot oven for 60 min. The obtained films were polycrystalline and uniformly covered the substrate (no sublimation of MoO₃ was observed), see Fig. S4a and b. However, the XRD results demonstrated that exposure of the (00k) plane was

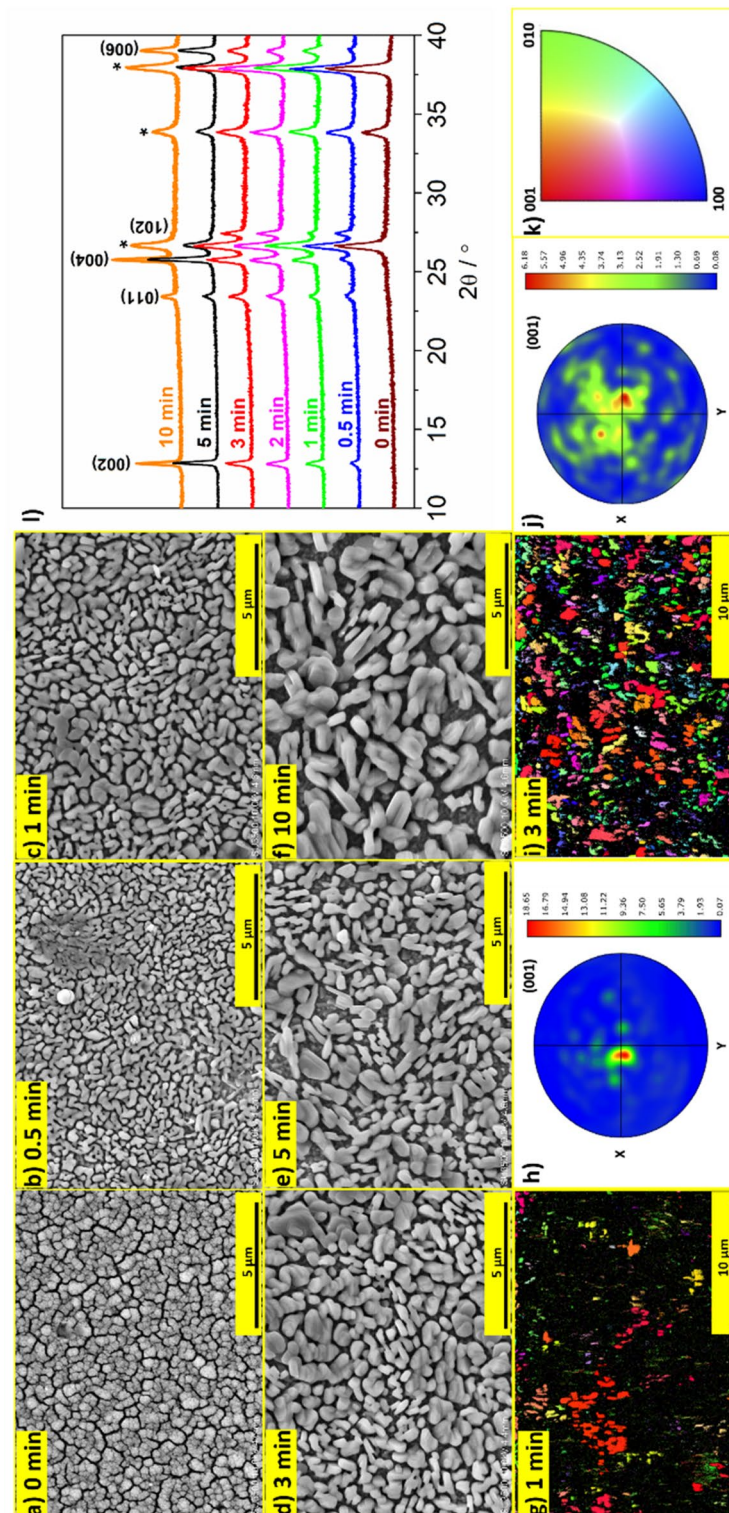


Figure 3. (a–f) SEM micrographs of MoO₃ films deposited on the FTO substrate at room temperature for 120 min, followed by “rapid” post-annealing for various durations; EBSD inverse pole figure (IPF) map and pole figures for annealed MoO₃ film at (g, h) 1 min, and (i, j) 3 min; (k) The color code representing the crystal orientation; (l) The XRD patterns of MoO₃ films.

not achieved at this temperature (Fig. S4c). Therefore, to obtain a MoO₃ film with the (00k) planes exposed, the “rapid” annealing at 575 °C for a short period of time was required.

Two types of the samples, labeled as MoO₃-(011)&(102) and MoO₃-(00k) were selected for further comparison of their properties using electrochemical methods.

Electrochemical properties

Both types of samples were subjected to investigation using electrochemical methods in a 1 M AlCl₃ aqueous electrolyte. Previous studies have already reported the satisfactory electrochemical properties of MoO₃ in such an electrolyte²⁸. First, cyclic voltammetry curves were recorded to compare the behavior of the MoO₃-(011)&(102) and MoO₃-(00k) electrode materials, as shown in Fig. 4a,b. Generally, during the first scan, both samples exhibited cathodic peaks occurring at the same potentials. Notably, the current density for the MoO₃-(011)&(102) sample was higher than that of the MoO₃-(00k) one. These cathodic peaks correspond to the reduction of Mo(VI) centers and simultaneous cation insertion. The complexity of the AlCl₃ aqueous solution chemistry, including hydrolysis, makes it unclear which form of ion is being intercalated. However, the ex-situ EDX measurements confirm the presence of Al in the sample after cathodic polarization (−0.1 V vs. Ag/AgCl (3 M KCl)), as it is shown in Fig. S5, indicating that the observed electroactivity is related to the insertion of Al-containing cations into the MoO₃ structure. The presence of chlorides was also detected, suggesting that the electrolyte was simply adsorbed on the electrode surface, however, the excess of Al (considering the stoichiometry of AlCl₃) clearly indicates the incorporation of Al-containing ions into the structure. Regarding the shape of the cyclic voltammetry curves, both samples exhibited clear irreversibility of the electrochemical processes. MoO₃ is sensitive to the potential range during polarization²⁹, indicating that cations are likely irreversibly intercalated into the electrode material structure. The cathodic peak observed during the 1st scan at around E = 0.05 V versus Ag/AgCl (3 M KCl) disappeared and was not seen during the 2nd scan. Similar behavior has already been reported for MoO₃-based electrodes tested in Mg²⁺-containing electrolytes³⁰. In the case of the sample with (011) and (102) facets exposed, the electrochemical activity related to cation intercalation/deintercalation was clearly observed during 2nd scan, as well. The peaks registered for the electrode material with (00k) planes exposed almost disappeared, but a similar shape of cyclic voltammogram has been reported before³¹. This suggests that the MoO₃-(011)&(102) sample, with vdW gaps perpendicular to the substrate, is a more suitable electrode material for energy storage due to the occurrence of intercalation/deintercalation processes during subsequent scans. In such wide range of potentials, the electrodes exhibited very poor stability during cycling, thus measurements were also performed in a narrower range to avoid irreversible intercalation. The cyclic voltammetry curves measured from −0.1 to 0.4 V (vs. Ag/AgCl (3 M KCl)) at different scan rates are shown in Fig. 4c,d. For the MoO₃-(011)&(102) sample, the well-shaped peaks related to cations intercalation/deintercalation were recorded for all scan rates. The perfect linear fit of the current density peaks versus the square root of the scan rate confirms that the kinetics of the process is diffusion controlled, see the inset of Fig. 4c. In the case of the sample with the (00k) planes exposed, the peaks (especially cathodic ones) are broadened and do not have a clear maximum, suggesting poorer kinetics in comparison with previous one, as it is shown in Fig. 4d. Additionally, both $j = f(v)$ and $j = f(v^{0.5})$ are not linear, see the inset of Fig. 4d. The MoO₃-(00k), in contrast to MoO₃-(011)&(102), shows a decrease in current densities during subsequent polarization cycles, see the comparison of the 2nd and 3rd cv scans in Fig. 4e. Thus, non-linear behavior is probably related to the electrode material deactivation that progresses during the polarization cycles, not with the nature of the electrochemical process itself. The potential usability of electrodes in energy storage devices was also tested during galvanostatic charge/discharge measurements. The measurements were performed from −0.1 to 0.4 V (vs Ag/AgCl (3 M KCl)). The obtained results are presented in Fig. 4f,g. The capacitance (and capacity) estimated from the first, cathodic curve is in the same range for both types of electrodes. However, at the lowest current density, the capacitance of MoO₃-(011)&(102) stabilizes at values 4 times higher in comparison with MoO₃-(00k). At higher current densities, the capacitance remains at a reasonable level only for the sample with crystal orientation for which an intercalation/deintercalation is facilitated ((001) and (102) exposed). Such behavior may be simply related to the poor stability of the MoO₃-(00k) during cycling. However, the very low capacitance measured at higher current densities can be also affected by sluggish kinetics of the ion intercalation, while vdW gaps are parallel to the substrate.

On the other hand, as shown in the polarization curves, the MoO₃-(00k) sample exhibited a significantly lower overpotential for the hydrogen evolution reaction (HER) as presented in Fig. 4h. The results for bare Pt disc and FTO substrate are shown for comparison. The results prove that the MoO₃ sample with exposed (00k) planes was characterized by higher electrocatalytic activity and faster kinetics in promoting the HER. Enhanced electrocatalytic properties can be attributed to a hindered proton intercalation process. The limited insertion of cations into the MoO₃ structure may consequently result in a diminished overpotential for H⁺ reduction when compared to an electrode, where intercalation is facilitated. The electrocatalytic properties of MoO₃ towards HER have already been reported³². Moreover, it has been presented that MoO₃ in the form of nanobelts, with (00k) planes exposed, exhibits superior properties for H₂ evolution compared to commercially available MoO₃³³.

Additionally, electrochemical impedance spectroscopy measurements were performed and the comparison of spectra recorded during cathodic polarization (E = −0.1 V vs. Ag/AgCl (3 M KCl)) is shown in Fig. 5a. The measurements were performed at the potential that Al-containing ions are intercalated to the electrode material. As expected, due to the mechanism of charge storage in MoO₃³⁴, there is a range of frequencies where the spectra exhibit diffusional behavior. Thus, the Warburg coefficients were estimated as the slope of $Z = f(\omega^{-0.5})$ function, as shown in Fig. 5b. This analysis suggests that apparent diffusion coefficient of cations (it is assumed that it is Al³⁺ diffusion) is higher for the MoO₃-(011)&(102) electrode material compared to the MoO₃-(00k) one. In order to compare the electrical properties of the electrodes, an electric equivalent circuit was proposed, as shown in the inset of Fig. 5a. The simple model consist of 4 elements: R1—electrolyte resistance, R2—charge transfer resistance

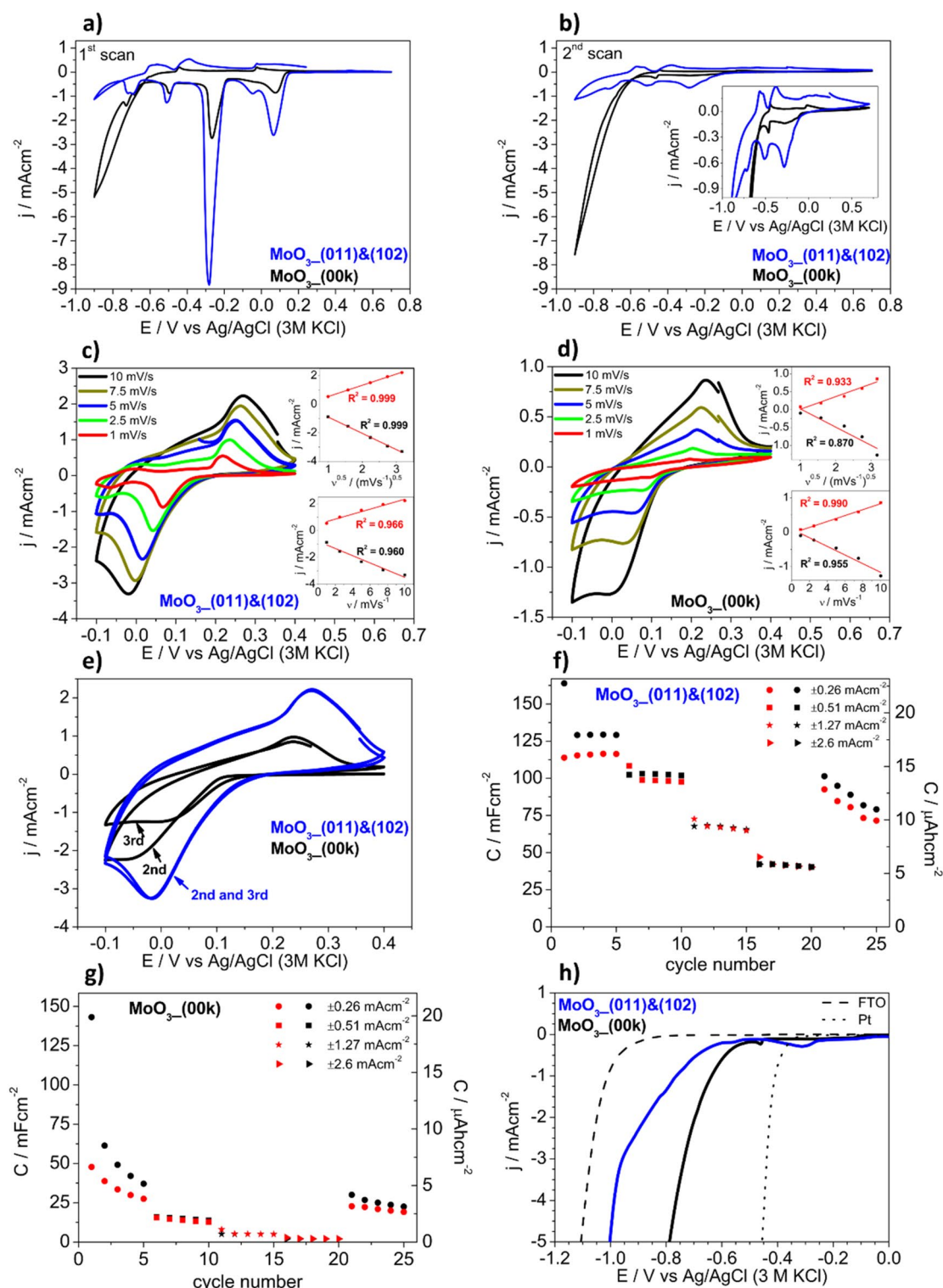


Figure 4. (a) The 1st and (b) the 2nd cv scans ($v = 2.5 \text{ mVs}^{-1}$) of $\text{MoO}_3\text{-(011)\&(102)}$ and $\text{MoO}_3\text{-(00k)}$; (c) and (d) Comparison of cv 2nd scans of $\text{MoO}_3\text{-(011)\&(102)}$ and $\text{MoO}_3\text{-(00k)}$ recorded at different scan rates (insets: $j = f(v)$ and $j = f(v^{0.5})$); (e) Comparison of 2nd and 3rd cv scans ($v = 10 \text{ mVs}^{-1}$); (f) and (g) Comparison of the capacitance determined from galvanostatic charge/discharge cycles for $\text{MoO}_3\text{-(011)\&(102)}$ and $\text{MoO}_3\text{-(00k)}$ (from -0.1 to 0.4 V vs. Ag/AgCl (3 M KCl), black and red symbols stands for cathodic and anodic scans, respectively); (h) LSV curves recorded at potential range suitable for HER for $\text{MoO}_3\text{-(011)\&(102)}$, $\text{MoO}_3\text{-(00k)}$, bare FTO, and Pt ($v = 2.5 \text{ mVs}^{-1}$). All measurements were performed in 1 M AlCl_3 .

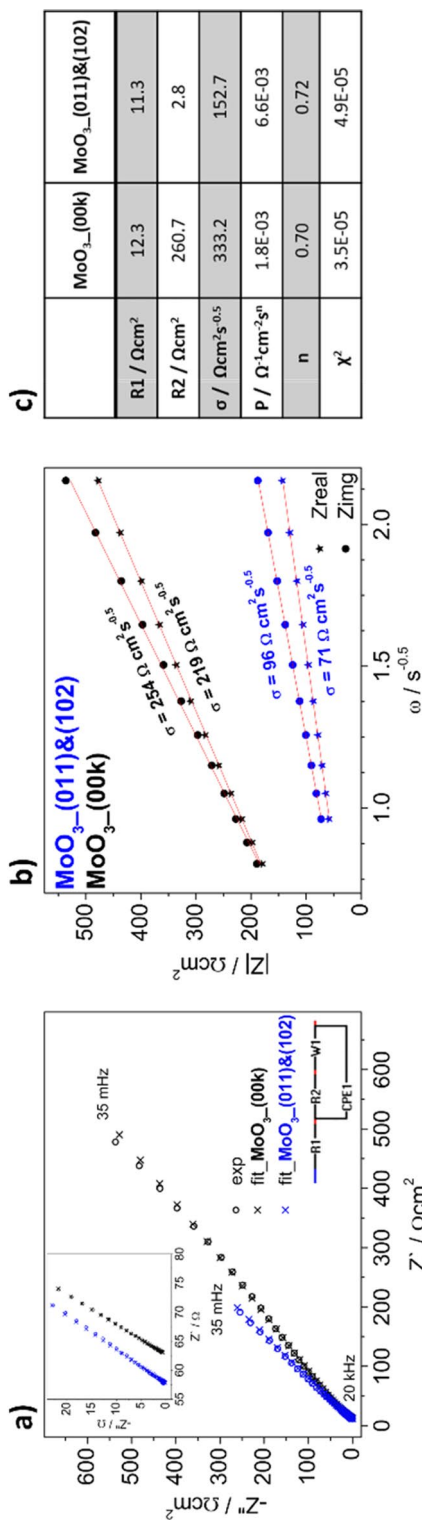


Figure 5. (a) Nyquist plots and (b) $Z = f(\omega^{-0.5})$ plots for the $\text{MoO}_3\text{-(011)\&(102)}$ and $\text{MoO}_3\text{-(00k)}$ electrode materials, recorded at $E = -0.1$ V versus Ag/AgCl (3 M KCl); (c) The results of EIS fitting for both electrodes.

on the electrode/electrolyte interface, CPE1—capacitive properties of the electrode material, and W1—Warburg element (diffusional processes). The goodness of fitting of about $3\text{--}5\cdot 10^{-5}$ was achieved and the results are shown in Fig. 5c. The values of R1 are comparable due to the electrochemical setup, which ensures constant distances between the electrodes. However, a significant difference was observed for the R2 values, with 261 and $3\ \Omega\text{cm}^2$ for the $\text{MoO}_3\text{_(00k)}$ and the $\text{MoO}_3\text{_(011)\&(102)}$ electrode, respectively. Assuming that this value is related to cation insertion from the electrolyte to the electrode material, results indicate that exposing the (001) and (102) planes to the electrolyte facilitates the intercalation phenomenon. The values of the constant phase element parameters are related to the capacitive properties of the electrode materials. The “n” values close to 0.7 suggest that it is not “pure” double-layer capacitance, but rather a more complex modeled process³⁵, thus the electric equivalent circuit used is simplified. Nevertheless, the higher “P” value indicated a higher capacitance of the $\text{MoO}_3\text{_(011)\&(102)}$ material. The values of the Warburg coefficients obtained from modeling are not exactly the same as those from the analysis shown in Fig. 5b, however, the trend remains consistent. The apparent diffusion coefficient of Al^{3+} ions was estimated using a formula derived by rearranging the definition of the Warburg coefficient, assuming that the diffusion coefficients of intercalation and deintercalation are the same:

$$D_{\text{Al}^{3+}} = \left(\frac{RT}{\sqrt{2}n^2\sigma cF^2} \right)^2 \quad (1)$$

where R—gas constant [$\text{J}\cdot\text{K}^{-1}\cdot\text{mol}^{-1}$], T—temperature [K], n—charge of ion, σ —Warburg coefficient [$\Omega\text{cm}^2\text{s}^{-0.5}$], c—concentration of ions [$\text{mol}\cdot\text{cm}^{-3}$] (it is assumed that $c = 1\ \text{M}$), F—Faraday constant [$\text{C}\cdot\text{mol}^{-1}$].

The apparent diffusion coefficient of Al^{3+} ions estimated using the Warburg coefficient from modeling was found to be $1.9\cdot 10^{-14}$ and $3.9\cdot 10^{-15}\ \text{cm}^2\text{s}^{-1}$ for the $\text{MoO}_3\text{_(011)\&(102)}$ and $\text{MoO}_3\text{_(00k)}$ electrodes, respectively. Notably, different diffusion coefficients were determined for electrodeposited MoO_3 , depending on the size and charge of the cation; for instance, D_{Na^+} was higher than $D_{\text{Al}^{3+}}$ ³⁶. Moreover, the values of $D_{\text{Al}^{3+}}$ are in good agreement with values presented here. In this work, the diffusion coefficients of the same cation were compared for polycrystalline films with differently oriented crystallites. Moreover, it can be expected that intercalated ions are mobile in vdW gaps. According to the results, in the case of the polycrystalline film with vdW gaps perpendicular to the substrate, diffusion is facilitated, resulting in a higher diffusion coefficient compared to the material with vdW gaps parallel to the substrate. Furthermore, the values of charge transfer resistance suggest that the intercalation phenomenon occurs on the (011) and (102) facets, while the mobility of the cation through the (00k) plane is hindered. On the other hand, the electrode material with exposed (00k) planes exhibits enhanced electrocatalytic properties towards the hydrogen evolution reaction. The presented conclusions are schematically shown in Fig. 6.

Summary

The pulsed laser deposition technique enables the deposition of MoO_3 polycrystalline films onto FTO substrates. By adjusting the procedure parameters, the orientation of the crystallites in relation to the substrate can be controlled, without altering the substrate itself. In order to expose the (011) and (102) facets, the deposition process was carried out at $450\ \text{}^\circ\text{C}$, while filling the deposition chamber with argon during the initial minutes of sputtering. Thus, the pre-deposited thin layer of metallic molybdenum promote the growth of MoO_3 crystallites in a manner that exposes the desired facets. On the other hand, the deposition of amorphous layers followed by rapid heating at $575\ \text{}^\circ\text{C}$ for a short duration resulted in layers with exposed (00k) planes. In conclusion, the deposition of $\alpha\text{-MoO}_3$ on commercially available polycrystalline FTO substrates is achievable, and the orientation of the crystallites, as well as the exposure of specific crystal facets can be controlled by adjusting the deposition and post-treatment conditions. Electrochemical findings indicated that the intercalation of cations is facilitated when the vdW gaps are perpendicular to the substrate and the (011) and (102) facets are exposed to the electrolyte. Consequently, such electrode material possesses desirable properties suitable for utilization in energy storage systems, including ion batteries and electrochemical capacitors. However, when (00k) planes are exposed, electrode material exhibited improved electrocatalytic properties for hydrogen evolution, which is an equally crucial application nowadays. The apparent diffusion coefficient value also strictly depends on the deposition conditions, with the highest value of $1.9\cdot 10^{-14}\ \text{cm}^2\text{s}^{-1}$ observed for the $\text{MoO}_3\text{_(001)\&(102)}$ material. Furthermore, these results show promise and warrant further exploration of the proposed procedures to assess

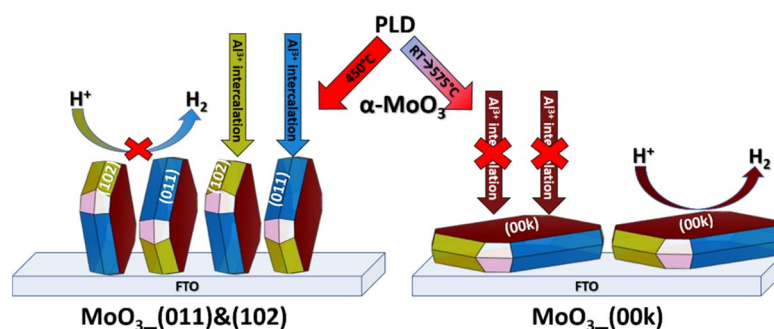


Figure 6. Schematic representation of the electrochemical properties of MoO_3 films based on the orientation of the crystallites and deposition parameters.

their universality and applicability to different materials and substrates. Such investigation would provide significant benefits by enabling the study of the influence of crystallite orientation on layer properties, independent of substrate variations. This comprehensive approach would facilitate a deeper understanding of the fundamental relationships between crystallographic orientation and material functionality, fostering advancements in materials science and providing opportunity for innovative applications across various fields.

Data availability

XRD patterns and polarization curves are available in the BRIDGE OF KNOWLEDGE repository: <https://mostwiedzy.pl/open-research-data/xrd-and-electrochemical-results-for-moo3-films-deposited-using-pulsed-laser-deposition-system,703093455755919-0>.

Received: 26 June 2023; Accepted: 28 September 2023

Published online: 04 October 2023

References

1. Rather, R. A. *et al.* Influence of exposed facets, morphology and hetero-interfaces of BiVO₄ on photocatalytic water oxidation: A review. *Int. J. Hydrog. Energy* **46**, 21866–21888 (2021).
2. Jia, Q. Q. *et al.* Exposed facets induced enhanced acetone selective sensing property of nanostructured tungsten oxide. *J. Mater. Chem. A* **2**, 13602–13611 (2014).
3. Kim, C. W., Yeob, S. J., Cheng, H. M. & Kang, Y. S. A selectively exposed crystal facet-engineered TiO₂ thin film photoanode for the higher performance of the photoelectrochemical water splitting reaction. *Energy Environ. Sci.* **8**, 3646–3653 (2015).
4. Luo, Y. *et al.* Experimental and theoretical evaluation of crystal facet exposure on the charge transfer and SERS activity of ZnO films. *Nanoscale* **14**, 16220–16232 (2022).
5. Shi, W. *et al.* Ultra-fast construction of CuBi₂O₄ films supported Bi₂O₃ with dominant (0 2 0) facets for efficient CO₂ photoreduction in water vapor. *J. Alloys Compd.* **890**, 161919 (2022).
6. Pan, L. *et al.* Exposed facet engineering design of graphene-SnO₂ nanorods for ultrastable Li-ion batteries. *Energy Storage Mater.* **19**, 39–47 (2019).
7. Tu, W. *et al.* State-of-the-art advancements of crystal facet-exposed photocatalysts beyond TiO₂: Design and dependent performance for solar energy conversion and environment applications. *Mater. Today* **33**, 75–86 (2020).
8. Gao, X. & Zhang, T. An overview: Facet-dependent metal oxide semiconductor gas sensors. *Sens. Actuators B Chem.* **277**, 604–633 (2018).
9. Batista, P. D. & Mulato, M. Polycrystalline fluorine-doped tin oxide as sensing thin film in EGFET pH sensor. *J. Mater. Sci.* **45**, 5478–5481 (2010).
10. Rettie, A. J. E. *et al.* Pulsed laser deposition of epitaxial and polycrystalline bismuth vanadate thin films. *J. Phys. Chem. C* **118**, 26543–26550 (2014).
11. Han, H. S. *et al.* Boosting the solar water oxidation performance of a BiVO₄ photoanode by crystallographic orientation control. *Energy Environ. Sci.* **11**, 1299–1306 (2018).
12. Qu, Q., Zhang, W. B., Huang, K. & Chen, H. M. Electronic structure, optical properties and band edges of layered MoO₃: A first-principles investigation. *Comput. Mater. Sci.* **130**, 242–248 (2017).
13. Ziolkowski, J. Catalytic anisotropy of MoO₃ in oxidation reactions in the light of bond-strength model of active sites. *J. Catal.* **80**, 263–273 (1983).
14. Cai, P., Chen, J., Ding, Y., Liu, Y. & Wen, Z. Defect-rich MoO₃ nanobelt cathode for a high-performance hybrid Alkali/Acid Zn-MoO₃ rechargeable battery. *ACS Sustain. Chem. Eng.* **9**, 11524–11533 (2021).
15. Liu, Y. *et al.* Ultrathin polypyrrole layers boosting MoO₃ as both cathode and anode materials for a 2.0 V high-voltage aqueous supercapacitor. *ACS Appl. Mater. Interfaces* **14**, 4490–4499 (2022).
16. Szkoda, M., Trzciński, K., Klein, M., Siuzdak, K. & Lisowska-Oleksiak, A. The influence of photointeraction and photochromism effects on the photocatalytic properties of electrochemically obtained maze-like MoO₃ microstructures. *Sep. Purif. Technol.* **197**, 382–387 (2018).
17. Hsu, C. S., Chan, C. C., Huang, H. T., Peng, C. H. & Hsu, W. C. Electrochromic properties of nanocrystalline MoO₃ thin films. *Thin Solid Films* **516**, 4839–4844 (2008).
18. Mobtakeri, S., Habashyani, S. & Gür, E. Highly responsive Pd-decorated MoO₃ nanowall H₂ gas sensors obtained from in-situ-controlled thermal oxidation of sputtered MoS₂ films. *ACS Appl. Mater. Interfaces* **14**, 25741–25752 (2022).
19. Wang, X. *et al.* Manipulating the optical and electronic properties of MoO₃ films through electric-field-induced ion migration. *J. Mater. Chem. C* **10**, 135–141 (2022).
20. Bouzidi, A. *et al.* Effect of substrate temperature on the structural and optical properties of MoO₃ thin films prepared by spray pyrolysis technique. *Mater. Sci. Eng. B Solid-State Mater. Adv. Technol.* **97**, 5–8 (2003).
21. Subbarayudu, S., Madhavi, V. & Uthanna, S. Post-deposition annealing controlled structural and optical properties of RF magnetron sputtered MoO₃ films. *Adv. Mater. Lett.* **4**, 637–642 (2013).
22. Yao, D. D. *et al.* Electrodeposited α - and β -phase MoO₃ films and investigation of their gasochromic properties. *Cryst. Growth Des.* **12**, 1865–1870 (2012).
23. Sunu, S. S., Prabhu, E., Jayaraman, V., Gnanasekar, K. I. & Gnanasekaran, T. Gas sensing properties of PLD made MoO₃ films. *Sens. Actuators B Chem.* **94**, 189–196 (2003).
24. Martínez, H. M., Torres, J., Rodríguez-García, M. E. & López-Carreño, L. D. Gas sensing properties of nanostructured MoO₃ thin films prepared by spray pyrolysis. *Phys. B Condens. Matter* **407**, 3199–3202 (2012).
25. Trzciński, K. *et al.* Pulsed laser deposition of bismuth vanadate thin films—the effect of oxygen pressure on the morphology, composition, and photoelectrochemical performance. *Materials (Basel)* **13**, 1360 (2020).
26. Pantoya, M. L. & Granier, J. J. The effect of slow heating rates on the reaction mechanisms of nano and micron composite thermite reactions. *J. Therm. Anal. Calorim.* **85**, 37–43 (2006).
27. Felix, A. A., Silva, R. A. & Orlandi, M. O. Layered α -MoO₃ nanoplates for gas sensing applications. *CrystEngComm* **22**, 4640–4649 (2020).
28. Lahan, H. & Das, S. K. Al³⁺ ion intercalation in MoO₃ for aqueous aluminum-ion battery. *J. Power Sour.* **413**, 134–138 (2019).
29. Mendoza-Sánchez, B., Brousse, T., Ramirez-Castro, C., Nicolosi, V. & Grant, P. S. An investigation of nanostructured thin film α -MoO₃ based supercapacitor electrodes in an aqueous electrolyte. *Electrochim. Acta* **91**, 253–260 (2013).
30. Das, T., Tosoni, S. & Pacchioni, G. Structural and electronic properties of bulk and ultrathin layers of V₂O₅ and MoO₃. *Comput. Mater. Sci.* **163**, 230–240 (2019).
31. Thangasamy, P., Ilayaraja, N., Jeyakumar, D. & Sathish, M. Electrochemical cycling and beyond: Unrevealed activation of MoO₃ for electrochemical hydrogen evolution reactions. *Chem. Commun.* **53**, 2245–2248 (2017).

32. Phuruangrat, A., Ham, D. J., Thongtem, S. & Lee, J. S. Electrochemical hydrogen evolution over MoO₃ nanowires produced by microwave-assisted hydrothermal reaction. *Electrochem. commun.* **11**, 1740–1743 (2009).
33. Sinaim, H. *et al.* Free-polymer controlling morphology of α -MoO₃ nanobelts by a facile hydrothermal synthesis, their electrochemistry for hydrogen evolution reactions and optical properties. *J. Alloys Compd.* **516**, 172–178 (2012).
34. Elkholy, A. E., Duignan, T. T., Knibbe, R. & Zhao, X. S. Electrosynthesis of polypyrrole-reinforced helical α -MoO₃ microribbons for high-energy aqueous Al³⁺-ion pseudocapacitors. *Electrochim. Acta* **429**, 141050 (2022).
35. Drewniak, Ł & Kochowski, S. The origin of constant phase element in equivalent circuit of MIS (n) GaAs structures. *J. Mater. Sci. Mater. Electron.* **31**, 19106–19118 (2020).
36. Elkholy, A. E., Duignan, T. T., Hussain, T., Knibbe, R. & Zhao, X. S. Charge storage behaviour of α -MoO₃ in aqueous electrolytes – effect of charge density of electrolyte cations. *ChemElectroChem* **9**, 1–13 (2022).

Acknowledgements

Financial support provided by the Gdańsk University of Technology by the DEC-3/2020/IDUB/I.3.3 grant under the Argentum—‘Excellence Initiative—Research University’ program is gratefully acknowledged. This work is financially supported by The National Centre for Research and Development via grant no LIDER/15/0088/L-10/18/NCBR/2019 (*Integrated prototype of a photo-supercapacitor for energy storage obtained as a result of solar radiation conversion*). Open Access of the publication was supported by the AGH Excellence Initiative—Research University program (IDUB AGH, Action 9). The visualization of crystal structures was accomplished using Vesta software. We extend our thanks to dr Jakub Karczewski from Gdansk University of Technology for conducting the EDX analysis.

Author contributions

Conceptualization: K.T., M.S.; Investigation: K.T., Z.Z., M.Sz., K.B., M.S.; Methodology: K.T., M.S.; Formal Analysis: K.T., Z.Z., M.Sz., A.P.N., K.B., M.S.; Writing – Original Draft: K.T.; Review & Editing: Z.Z., M.Sz., A.P.N. M.S., Visualization: K.T.; Project administration: K.T., Funding acquisition: K.T., M.Sz.

Competing interests

The authors declare no competing interests.

Additional information

Supplementary Information The online version contains supplementary material available at <https://doi.org/10.1038/s41598-023-43800-9>.

Correspondence and requests for materials should be addressed to K.T.

Reprints and permissions information is available at www.nature.com/reprints.

Publisher’s note Springer Nature remains neutral with regard to jurisdictional claims in published maps and institutional affiliations.



Open Access This article is licensed under a Creative Commons Attribution 4.0 International License, which permits use, sharing, adaptation, distribution and reproduction in any medium or format, as long as you give appropriate credit to the original author(s) and the source, provide a link to the Creative Commons licence, and indicate if changes were made. The images or other third party material in this article are included in the article’s Creative Commons licence, unless indicated otherwise in a credit line to the material. If material is not included in the article’s Creative Commons licence and your intended use is not permitted by statutory regulation or exceeds the permitted use, you will need to obtain permission directly from the copyright holder. To view a copy of this licence, visit <http://creativecommons.org/licenses/by/4.0/>.

© The Author(s) 2023